



DIRECTFIT™

Auto Lift Repair Parts and Accessories for Nussbaum Lifts

Automotive Shop Equipment | Auto Lift Repair Parts

The Industry's Largest Selection of Auto Lift Repair Parts

DIRECTFIT™
SVI's DIRECT FIT™ BRAND



SVI International, Inc.
155 Harvestore Drive • DeKalb, IL 60115

800-321-8173
815-748-0200

www.sviinternational.com

SERVICE • **V**ALUE • **I**NNOVATION
OLUTIONS • ISTON • IDEAS



SVI's Product Line is Vast

CONTACT US TODAY IF THERE'S SOMETHING YOU CAN'T FIND

800-321-8173 • 815-748-0200 • www.sviinternational.com



Shims for 3/4" Wedge and Screw Anchors

Color Coded Shims are In-Stock! Order Today!

- BH-7512-92 Assortment 150 Shims (50 each)
- BH-7512-90 1/16" Blue Pack of 50
- BH-7512-91 1/8" Red Pack of 50
- BH-7512-89 1/4" Black Pack of 50

HEAVY DUTY PLASTIC SLOTTED SHIMS

Extra-thick shims make it easy to level and align 2- and 4-post surface mount lifts. These rugged plastic shims will not corrode, rot or rust. A must-have for every professional lift installer in the industry.



Installation Kits Available

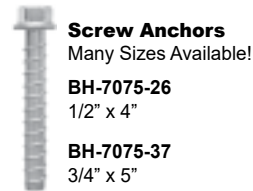
Installation Supplies

- Carbide Drill Bits Many Sizes Available!
- Core Bits
- Epoxy and Adhesives Available!
- Wedge Anchors
- Screw Anchors
- Rebar Cutters and Adapter
- Rod Seal Install Tools
- Safety & Inspection Stickers

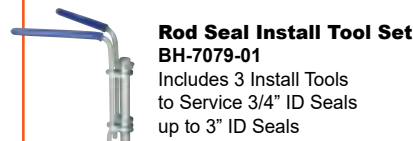
Simpson Carbide Drill Bits Many Options and Sizes Available!
 BH-7064Q-12-21 (Drilling Depth 16" / 3/4" dia.) SDS Max Quad Head Bit
 BH-7065Q-12-23 (Drilling Depth 18" / 3/4" dia.) Spline Shank Quad Head Bit
 BH-7065Q-12-16 (Drilling Depth 11" / 3/4" dia.) Spline Shank Quad Head Bit



Wedge Anchors
 Many Sizes Available!
 BH-7075-03
 3/4" x 5-1/2"
 Ask How to Get Free Shipping on Wedge Anchors!



Screw Anchors
 Many Sizes Available!
 BH-7075-26
 1/2" x 4"
 BH-7075-37
 3/4" x 5"



Rod Seal Install Tool Set
 BH-7079-01
 Includes 3 Install Tools to Service 3/4" ID Seals up to 3" ID Seals



INSPECTED
 Roll of 250
 BH-7011-11

ASK FOR OUR INSTALLATION SUPPLIES CATALOG



Wheel / Tire Hanger Kits

Increase Efficiency • For Any Budget

BH-7545-70K-4 Kit of 4
 BH-7545-70K Individual
 Includes Hardware



SF-92100 Set of 2

Air / Hydraulic Pumps for Rolling Bridge Jacks

Options Available—Call Today!



SVI's Product Line is Vast

CONTACT US TODAY IF THERE'S SOMETHING YOU CAN'T FIND

800-321-8173 • 815-748-0200 • www.sviinternational.com

INCREASE EFFICIENCY • ELIMINATE COSTLY DAMAGE TO DOORS • REDUCE STRESS OF SHOP TECHNICIANS



A Must-Have for All 2-Post Lifts!

- Available in 2 Sizes!
- BH-7077-02-2S 12" tall x 18" wide
- BH-7077-02-2 24" tall x 18" wide

Prevents Door Dings!
 Just one damaged door can cost 3 times as much as a simple investment in one SVI doorjammerPRO™.



Patent Protected

Auto Lift Cables and Chain Sheaves / Pulleys / Chain Rollers



TURF AND UTILITY TRAYS

FOR 2-POST LIFTS
 SYMMETRIC / ASYMMETRIC

The #1 Choice for Symmetric or Asymmetric 2-Post Surface Mount Lifts and In-Ground Side-By-Side, too!

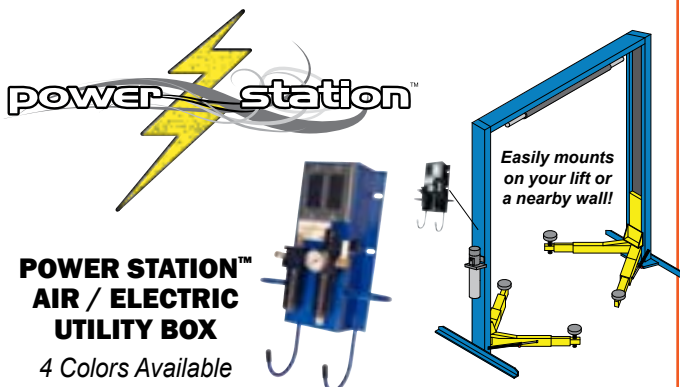


Hose Reel Hose Stops

Options Available—Call Today!

Auto Lift Power Units and Parts

Call SVI today!



POWER STATION™ AIR / ELECTRIC UTILITY BOX
 4 Colors Available



Vehicle Lifts and Lifting Equipment

New Lifts for Cars, Trucks, Buses, Motorcycles, UTVs and More
 Replacement Cylinders Sections & Kits • Turf Trays for 2-Post Lifts



Tire Changer Parts and Accessories

For Most Makes and Models
 See our Tire Changer Repair Parts Catalog!



Brake Lathe Repair Parts

For Most Makes and Models
 See our Brake Lathe Repair Parts Catalog!



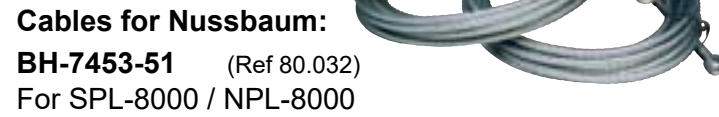
SVI has your
Repair Parts for **Nussbaum Lifts**

Cables • Pads • Switches • Valves • And More!

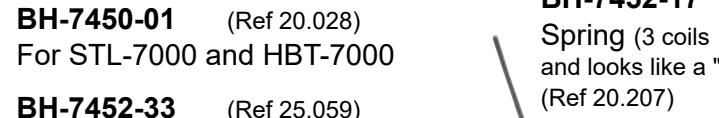
SVI part #	OEM#	Description
BH-7450-01	20.028	Equalizer Cable Assembly Used on New STL-7, HBT-7000
BH-7450-01A	20.008	Pulley for STL, SPL and NPL Models
BH-7450-02	10.157	Rubber Arm Pad
BH-7450-02-4	10.157	Rubber Arm Pads - Set of 4
BH-7451-01	20.135	Lowering Valve for STL7
BH-7451-02	10.270	Limit Switch
BH-7451-26	10.103	Rubber Bumper
BH-7451-30	10.114	Lift Rod Spring
BH-7451-45	10.222	Carriage Lock Spring
BH-7451-64	10.276	Pickup Plate / Screw-Up Adapter
BH-7452-02	20.036/37	Seal Kit
BH-7452-02A	20.036/37 ETL	Seal Kit - ETL
BH-7452-13	20.137	Operating Handle
BH-7452-16	20.206	Safety Lock Master Side
BH-7452-17	20.207	Spring (3 coils / looks like a "V")
BH-7452-18	20.208	Spring-Lock Clip
BH-7452-20	20.212	Safety Lock Disc
BH-7452-23	20.221L	Lift Rod (Left) - STL7, HBT7, HBT8
BH-7452-24	20.221R	Lift Rod (Right) - STL7, HBT7, HBT8
BH-7452-27	20.225	Safety Lock - Offside
BH-7452-29	25.009	Cable Pulley
BH-7452-32	25.032S	Hyd. Cylinder Seal Kit
BH-7452-33	25.059	Cable Set (2) HDL 12,000 39'+
BH-7452-41	25.303	Lift Rod (Left)
BH-7452-42	25.305	Lift Rod (Right)
BH-7452-50	25.546	NHDL Electrical Box Cover
BH-7452-70	40.223	Air Block
BH-7453-04	50.026	Contactors
BH-7453-51	80.032	Equalizing Cable SPL/NDL-8
BH-7453-52	80.035	Height Limit Switch
BH-7453-65	80.103	Top Glider
BH-7453-66	80.104	Flat Glider
BH-7453-67	80.105	Bottom Glider
BH-7453-69	80.109	SPL-8000 Arm Pin
BH-7453-71L	80.121L	Lock Rod for NPL/SPL - Left
BH-7453-71R	80.121R	Lock Rod for NPL/SPL - Right
BH-7453-75	80.231	Holding Valve
BH-7453-78	80.311	Push Button
BH-7453-79	80.312	Push Button Cover
BH-7453-89	85.23	Up Switch
BH-7453-90	85.233	Safety Lock Cable - Follower Side 25' 1"
BH-7453-91	85.234	Safety Lock Cable - Drive Side 7' 6"
BH-7454-06	80.059	Height Limit Activator Rod Kit
BH-7454-07	25.307	Height Adapter NDL 12000
BH-7454-08	85.235	Adj. Screw
BH-7454-09	80.108	Gear
BH-7454-30	85.237	Spring for Safety Lock Cable - SPL
BH-7454-31	85.236	Spring
BH-7454-32	80.228	Relief Valve
BH-7454-48	25.315	Safety Lock Disc
BH-7454-50	20.033	Fitting
BH-7454-51	995057	Lock Release Switch SPL9000
BH-7454-54	990334	Push Button
BH-7454-55	030ULN10036	Air Cylinder



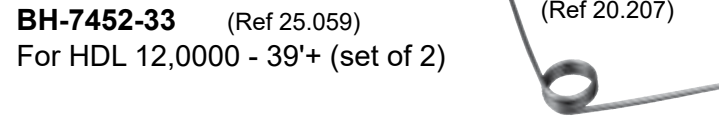
BH-7452-18
(Ref 25.305)
Spring-Lock Clip



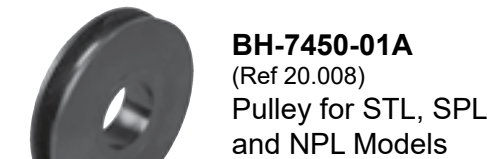
Cables for Nussbaum:
BH-7453-51 (Ref 80.032)
For SPL-8000 / NPL-8000



BH-7450-01 (Ref 20.028)
For STL-7000 and HBT-7000



BH-7452-33 (Ref 25.059)
For HDL 12,000 - 39'+ (set of 2)



BH-7450-01A
(Ref 20.008)
Pulley for STL, SPL and NPL Models



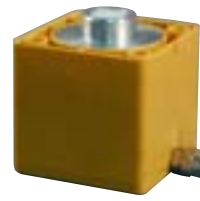
BH-7450-02
4-15/16" OD Rubber Pad
BH-7450-02-4
Rubber Pad Kit (no hardware included)



BH-7453-89
Up Switch
(Ref 85.23)



BH-7454-54 (Ref 990334) Push Button
BH-7453-78 (Ref 80.311) Push Button



BH-7452-70
(Ref 40.223)
Air Block



BH-7454-55
(Ref 030ULN10036)
Air Block



BH-7452-42
(Ref 25.305)
Lift Rod - Right

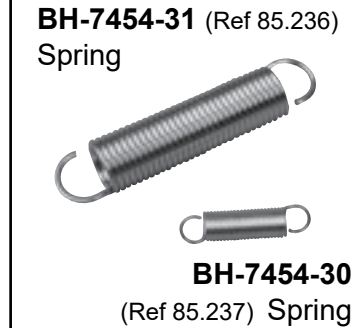


BH-7452-27
(Ref 20.225)
Safety Lock Offside



BH-7454-06 (Ref 80.059)
Height Limit Activator Rod and screw only

For Spring:
BH-7454-63 (Ref 80.060)
For Nylon Fastener Block:
BH-7454-60 (Ref 80.057)



BH-7454-31 (Ref 85.236)
Spring

BH-7454-30
(Ref 85.237) Spring



BH-7454-07
(Ref 25.307)
Height Adapter NDL 12,000



BH-7452-02 (Ref 20.036/37)
Seal Kit for STL-7000 with Cable



BH-7452-02A (Ref 20.036/37ETL)
Seal Kit (ETL) for STL-7000 with Cable



BH-7454-32 (Ref 80.228)
Relief Valve



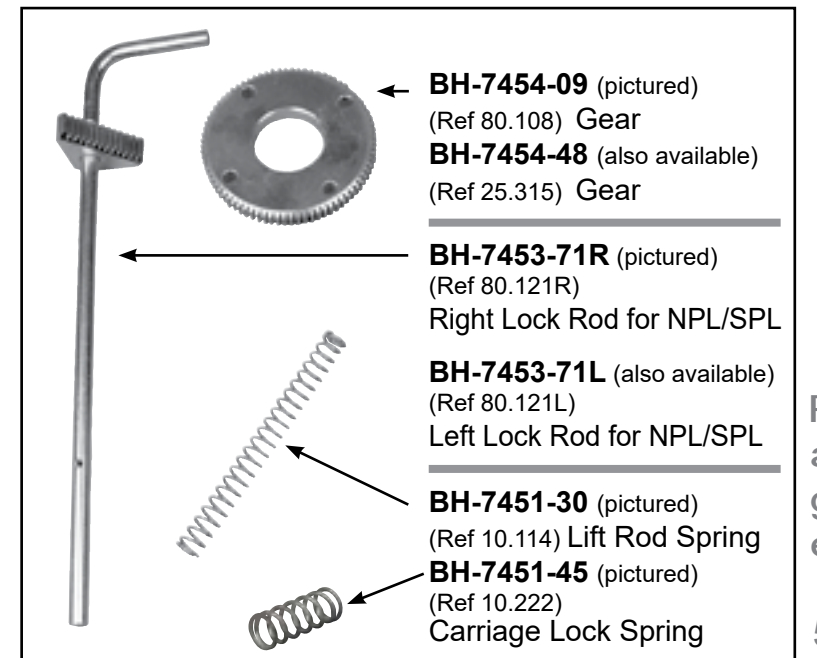
BH-7453-04
(Ref 50.026)
Contactor



BH-7454-50
(Ref 20.033)
Fitting



BH-7453-65
(Ref 80.103)
Top Glider
Also, call SVI for Flat or Bottom Gliders



BH-7454-09 (pictured)
(Ref 80.108) Gear
BH-7454-48 (also available)
(Ref 25.315) Gear

BH-7453-71R (pictured)
(Ref 80.121R)
Right Lock Rod for NPL/SPL

BH-7453-71L (also available)
(Ref 80.121L)
Left Lock Rod for NPL/SPL

BH-7451-30 (pictured)
(Ref 10.114) Lift Rod Spring

BH-7451-45 (pictured)
(Ref 10.222)
Carriage Lock Spring

Repair Parts for Nussbaum Lifts

SVI Part #	Ref #	Description
BH-7451-74	15.525	Catch Rod
BH-7451-75	15.526	Chain Roller
BH-7451-76	15.527	Chain Roll Pin
BH-7451-77	15.528	Chain Roller
BH-7451-78	15.529	Chain Roll Pin
BH-7451-79	15.534	Chain Roll Pin
BH-7451-80	15.542	Mounting Plate
BH-7451-81	15.543	Mag Lowering Valve
BH-7451-82	15.547	Lowering Switch
BH-7451-83	15.7	Pump Mount Stl
BH-7451-84	15.701	Pump Not Bosch
BH-7451-85	15.702	Oil Reservoir
BH-7451-86	15.706	Cylinder
BH-7451-87	15.715	Safety Lock Pipe
BH-7451-88	15.718	Master Side Chain
BH-7451-89	15.719	Offside Chain
BH-7451-90	15.72	Pin Master Side
BH-7451-91	15.721	Pin Offside
BH-7451-92	15.722	Catch Plate
BH-7451-93	15.723	Pin Catch Plate
BH-7451-94	15.725	Chain Roller Pin Top
BH-7451-95	15.727	Spring
BH-7451-96	15.73	Electrical Housing
BH-7451-97	15.734	Cylinder Cover
BH-7451-98	15.735	Guide Plate
BH-7451-99	20.021	Cylinder Cover Lock Bar
BH-7452-01	20.036	Cylinder Master Side
BH-7452-02	20.036/37	Seal Kit
BH-7452-02A	20.036/37ETL	Seal Kit
BH-7452-03	20.037	Cylinder
BH-7452-04	20.038	Hydraulic Hose
BH-7452-05	20.042	Overhead Hyd Line
BH-7452-06	20.044	Cylinder Cover Lock Bar
BH-7452-07	20.045	Collar with Seal
BH-7452-08	20.113	Oil Filter
BH-7452-09	20.114	Oil Tank
BH-7452-10	20.124	Electrical Housing
BH-7452-11	20.131	Cable Guide
BH-7452-12	20.133	Cable Guide
BH-7452-13	20.137	Operating Handle
BH-7452-14	20.139	Motor On/Off Spring
BH-7452-15	20.202	Pivot Rod For Safety Lock
BH-7452-16	20.206	Safety Lock Master Side
BH-7452-17	85.046 20.207	Spring
BH-7452-18	20.208	Spring-Lock Clip
BH-7452-19	20.211	Carrying Arm/Long
BH-7452-20	20.212	Safety Lock Disc
BH-7452-21	20.213	Carrying Arm Hinge Pin
BH-7452-22	20.216	Carrying Arm Short
BH-7452-23	20.221L	Lift Rod /Left Side
BH-7452-24	20.221R	Lift Rod/Right Side
BH-7452-25	20.222	Rubber Cap For Lift Rod
BH-7452-26	20.223	Spring
BH-7452-27	20.225	Safety Lock Offside
BH-7452-28	25.003	Top Plate For Post
BH-7452-29	25.009	Cable Pulley
BH-7452-30	25.01	Cable Pulley Shaft
BH-7452-31	25.032	Cylinder

Repair Parts for Nussbaum Lifts

SVI Part #	Ref #	Description
BH-7452-87	45.301	Hose 289"
BH-7452-88	45.302	Hose 212"
BH-7452-89	45.304	Hose 165"
BH-7452-90	45.307	Master Cylinder
BH-7452-91	45.308	Slave Cylidner
BH-7452-92	45.317	Rubber Riser/Foam Block
BH-7452-93	45.327	Hydraulic Hose
BH-7452-94	50.008	Safety Lock Valve
BH-7452-95	50.008H	Safety Lock Valve Handle
BH-7452-96	50.009	Equalizing Handle Spring
BH-7452-97	50.01	Main Valve
BH-7452-98	50.011	Electro Mechanical Valve
BH-7452-99	50.011A	Electro Mechanical Valve
BH-7453-01	50.014	Pump Complete
BH-7453-02	50.022	Pneumatic Valve
BH-7453-03	50.025	Main Switch w/ Knob
BH-7453-04	50.026	Contactora
BH-7453-05	50.027	Time Delay-New Style
BH-7453-06	50.031	Pressure Valve
BH-7453-07	50.031N	Pressure Valve-New Style
BH-7453-08	50.033	Equalizing Valve Handle
BH-7453-09	50.04	Main & Wheel Free Lift Valve
BH-7453-10	50.041	Mechanical Valve
BH-7453-11	55.005	Extendable Arm
BH-7453-12	55.007	Roller
BH-7453-13	55.009	Carrying Arm II
BH-7453-14	55.01	Cylinder
BH-7453-15	55.011	Cylinder
BH-7453-16	55.013	Shaft
BH-7453-17	55.014	Shaft
BH-7453-18	55.016	Lower Roller Shaft
BH-7453-19	55.019	Safety Lock
BH-7453-20	55.02	Safety Handle
BH-7453-21	55.021	Split Pin
BH-7453-22	55.022	Spring
BH-7453-23	55.025	Ring
BH-7453-24	55.027	Roller Shaft
BH-7453-25	55.029	Needle Bearing
BH-7453-26	55.032	Roller Jack Valve
BH-7453-27	55.034	Hose
BH-7453-28	55.04	Fastener
BH-7453-29	55.041	Cylinder Plate
BH-7453-30	55.043	Ring
BH-7453-31	55.046	Guide Ring
BH-7453-32	57.001	Hydraulic Hose
BH-7453-33	57.003	Blackhawk Pump
BH-7453-34	57.009	Carriage
BH-7453-35	57.01	Roller For Jack
BH-7453-36	57.011	Needle Bearing
BH-7453-37	57.015	Scissor Roller Top & Bottom
BH-7453-38	57.016	Roller Shaft
BH-7453-39	57.027	Time Delay-New Style
BH-7453-40	57.031	Pick UP Disc
BH-7453-41	57.035	Pick Up Extension
BH-7453-42	80.003	Master Cylinder
BH-7453-43	80.003ETL	Master Cylinder ETL Style
BH-7453-44	80.004	Slave Cylinder Non-ETL Style
BH-7453-44A	80.004M	Master Side Cylinder
BH-7453-45	80.004ETL	Slave Cylinder ETL Style



Repair Parts for Nussbaum Lifts

SVI Part #	Ref #	Description
BH-7454-01	80.306	Relay-6 Spade Connector
BH-7454-02	20.204	Chain Roller
BH-7454-03	20.046-3	Metric O'Ring
BH-7454-04	20.022	Allen Screw
BH-7454-05	85.235P	Lock Cable Plastic Block SL8000
BH-7454-06	80.059	Height Limit Activator Rod
BH-7454-07	25.307	Height Adapter ND1 12000
BH-7454-08	85.235	Adj. Screw
BH-7454-09	80.108	Gear
BH-7454-10	245SPL28217	Arm Adapter Base and Pad 1-3/4" (44mm) OD Pin
BH-7454-30	85.237	Spring
BH-7454-31	85.236	Spring
BH-7454-32	80.228	Relief Valve
BH-7454-33	40.255	Leveling Peg
BH-7454-34	20.102	Clutch Assy
BH-7454-35	20.029	Nylon Lock Nut
BH-7454-36	10.077	Motor
BH-7454-37	20.215	Allen Screw
BH-7454-38	10	Offside Long Arm HEL232
BH-7454-39	80.308	Transformer NPL8000
BH-7454-40	20.135EB	Eye Bolt
BH-7454-41	20.135BU	Bushing
BH-7454-42	20.205	Door Bumper
BH-7454-43	10.265XL	Master Side Release Cable 2' extra
BH-7454-44	10.163	Straight Fitting
BH-7454-45	10.024	Straight Fitting

SVI Part #	Ref #	Description
BH-7454-46	20.009	Lower Sheave Washer
BH-7454-47	25.501	Safety, Lift Rod
BH-7454-48	25.315	Safety Lock Disc
BH-7454-49	20.035	Top Hose
BH-7454-50	20.033	Fitting
BH-7454-51	995057	Switch SPL9000
BH-7454-52	0304LN10036	Safety Latches - Square
BH-7454-53	240SPL42043ET	Lock Release Handle SPL9000
BH-7454-54	990334	Pushbutton
BH-7454-55	030ULN10036	Air Cylinder - White Plastic 13K UniLift
BH-7454-56	20.224	Rolling Pin
BH-7454-57	10.272	Contactora 220v
BH-7454-58	25.308	3" Height Extension
BH-7454-59	80.029	Top Hose
BH-7454-60	80.057	Nylon Fastener
BH-7454-61	20.010	Lock Ring
BH-7454-62		Ramp Roller for Jumbo Lift
BH-7454-63	80.060	Spring for Height Limit Switch
BH-7454-64	80.010	Sheave Washer
BH-7454-65	85.036	Power Unit Cover
BH-7454-66		Air/Electric Utility Box
BH-7454-67		Tool Holder for Two Post Lift
BH-7454-68	990304 990291	Main Switch for Jumbo NT
BH-7454-69	15.519	Retaining Ring
BH-9480-01		Pad Superstructure for Side by Side



Knee Deep

IN CABLE ASSEMBLIES

Sustained Value

When you're ready to put yourself knee deep in savings, SVI can help. We leverage our extensive capabilities and the combined value found across our broad product line to keep your repair product costs to a minimum. Others may claim lower prices, but the fact is no one else truly delivers full spectrum value like SVI. Year in and year out, SVI follows best pricing practices—cable assemblies are no exception. Make sure you are knee deep—knee deep in savings when it comes to the prices you're paying for cable assemblies.

Initiative

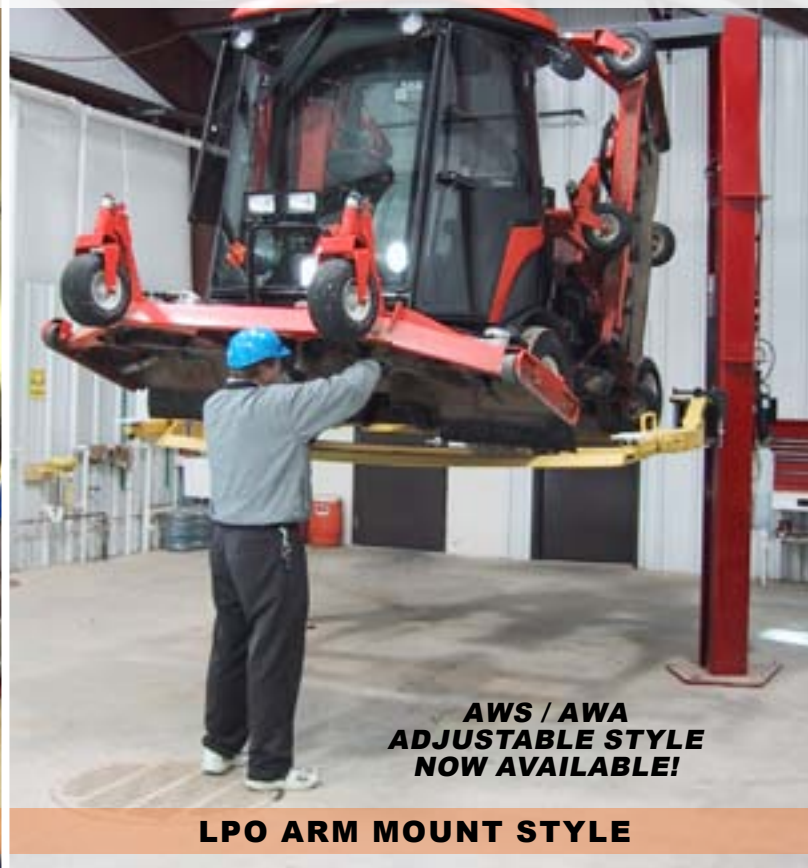
- Custom-Made Cables
- Many Markets Served
- Over 700 Engineered Cable Blueprints on File
- Special Pricing Programs Available
- Best Pricing
- Largest In-Stock Inventory of Ready-to-Ship Cable Assemblies
- Fasteners Furnished with Each Cable
- Customer-Specific Stocking Programs

CHICAGO • LOS ANGELES
800-321-8173 • 815-748-0200
www.sviinternational.com

YOUR CHOICE! 3 TURF TRAY STYLES, OPTIONS AND ACCESSORIES AVAILABLE



HSR ADAPTER HOLE MOUNT STYLE



**AWS / AWA
ADJUSTABLE STYLE
NOW AVAILABLE!**

LPO ARM MOUNT STYLE

Turf Equipment / Utility Vehicle Attachments for Automotive Lifts

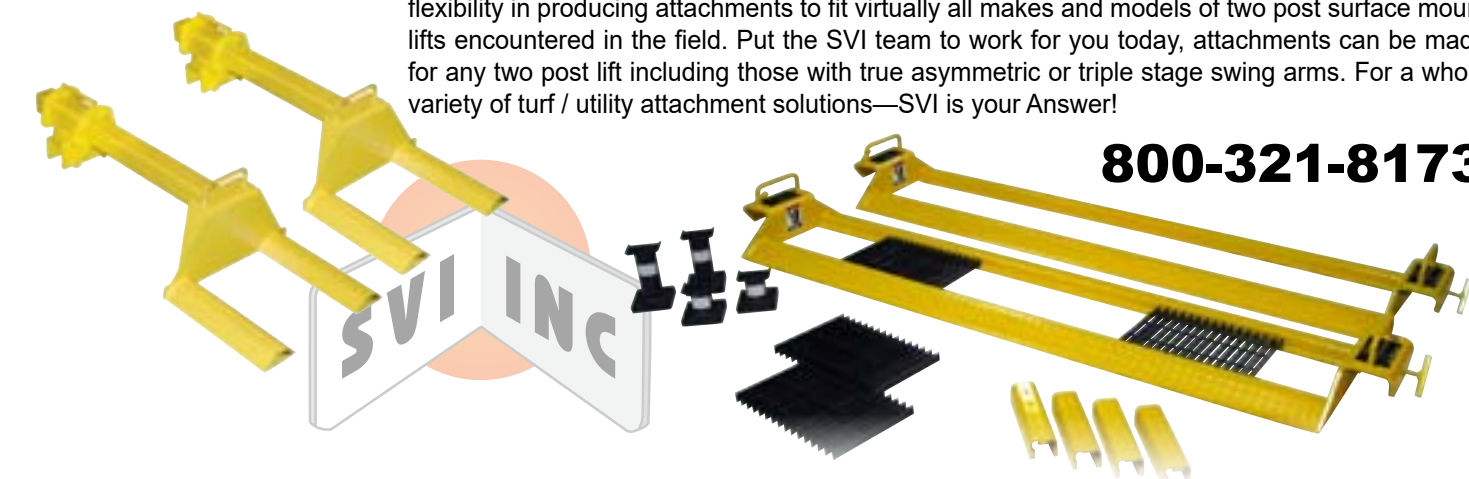
- Golf Courses
- Park Districts
- Municipalities
- ATV Dealers
- Public Works
- Amusement Parks
- Vacation Resorts
- Agricultural Shops
- and so many more...

No. 1—The First: An SVI wholly-owned subsidiary was the very first ever to invent Turf Attachments for use on automotive lifts. On September 9, 1997 SVI's very own MLM Lifts and Manufacturing (formerly known as Manitowoc Lift) developed the very first production drawings for a Turf Equipment Lifting Accessory. This innovative product line has allowed thousands of lift owners to convert their automotive lifts into a multi-functional tool. This allows for both service of their cars and pickup trucks but also ease of repair access to all the turf and small maintenance equipment also found in and around their shop.

Turf Attachments are an ideal tool to incorporate into any shop that has a two-post automotive lift or in-ground side-by-side that also has the need for servicing all types of other equipment. Turf Attachments are ideal for park districts, golf courses, outdoor power equipment dealers, municipalities, ATV dealers and just about anywhere else that requires more versatility from their lifts.

SVI has emerged and remains the leading supplier in its field for turf / utility attachments. The nimble nature of SVI engineering and strong focus on customer service allows for a wide range of flexibility in producing attachments to fit virtually all makes and models of two post surface mount lifts encountered in the field. Put the SVI team to work for you today, attachments can be made for any two post lift including those with true asymmetric or triple stage swing arms. For a whole variety of turf / utility attachment solutions—SVI is your Answer!

800-321-8173



TERMS AND CONDITIONS OF THE SALES ORDER FOR SVI INTERNATIONAL, INC.

- 1. GENERAL.** The terms and conditions of sales order outlined herein shall apply to the sale by SVI INTERNATIONAL, INC. (hereinafter referred to as "Company") of the items described on the facing page (hereinafter referred to as "Merchandise") to Purchaser.
- 2. DELIVERY.** Delivery shall be deemed to be complete when the Merchandise has been shipped F.O.B. Company's plants in DeKalb, Illinois, Montclair, California; and Hanover, Maryland ("Company's plants"). Shipments are subject to delays from causes or contingencies beyond the reasonable control of the Company. When otherwise not specified, shipments will be made in standard containers via carrier which, in the judgment of the Company, will result in the most practical method. Title and right of possession will pass to the Purchaser upon receipt by the carrier at the shipping point. If a customer of the Company should specify a specific carrier's method of shipment (i.e. UPS Next Day Air) and that carrier does not perform to the customer's expectations, freight credit to a customer's account will not be issued unless the Company can first obtain a credit.
- 3. RISK OF LOSS.** Identification of the Merchandise under Uniform Commercial Code (hereinafter referred to as "UCC") Section 2-501 shall take place at the moment of shipment F.O.B. Company's plants. Risk of loss shall pass to the Purchaser when the Merchandise is shipped from the Company's plants.
- 4. TITLE.** Title to the merchandise shall transfer to the Purchaser when the Merchandise is shipped from the Company's plants.
- 5. WARRANTIES.** The Company guarantees its products to be free from defects in workmanship and raw materials for a period of one year from date of purchase. **THIS WARRANTY IS EXPRESSLY IN LIEU OF ANY AND ALL WARRANTIES EXPRESS OR IMPLIED. COMPANY DOES NOT WARRANT THE MERCHANDISE IS MERCHANTABILITY OR FIT FOR ANY PARTICULAR PURPOSE.** Company's liability for breach of the terms of this Agreement, including any warranty, is limited to either refund of the invoice price of the Merchandise or at Company's option, replacement of the Merchandise free of charge, including transportation charges but not including the cost of labor. Purchaser has not relied on any statement or upon the conduct of Company with respect to the prospective use of the merchandise. Company shall not be liable for and Purchaser waives any and all claims for any loss or damage, directly or indirectly, arising from the use of the Merchandise and for punitive, incidental or consequential damages, including, but not limited to, damages to property, for loss of use, loss of time, loss of profit or loss of income. The Company does not authorize the sale of our products under any other warranty, expressed or implied. **Please note:** Electrical components and cylinder or shaft seals are not covered under warranty.
- 6. SETOFF.** All claims for money due or to become due from the Company shall be subject to deduction by the Company for any setoff or counterclaim arising out of this or any other claims of the Company or its affiliated companies, whether such setoff or counterclaim arose before or after any assignment by Purchaser.
- 7. INDEMNIFICATION.** Purchaser agrees to indemnify the Company and hold it harmless from and against all claims, liability, loss, damage or expense, including reasonable counsel fees, arising from or by reason of any modifications or alterations made by Purchaser. If a customer of the Company modifies or alters any part, in any manner whatsoever, or uses any part in departure from recommended performance specifications, said customer agrees to indemnify and hold the Company harmless from and against all liability and expenses based on damage to property or injury to or death of any person arising out of or attributable to such modified or altered part. **Further, the Company will not accept any such modified or altered part for credit to a customer's account.**
- 8. FREIGHT POLICY.** Freight charges are prepaid and added to invoice or collect FOB shipping point. Note: All customers are responsible for all carrier shipping costs, fees, surcharges, etc. including order refusal and return fees.
- 9. RETURN POLICY.** To return a part for credit or inspection, Purchaser must first contact our Main Office in Illinois, to obtain a Return Merchandise Form. Once Purchaser has obtained this form, the parts can be returned freight prepaid only. The Return form must be included with the shipment. Parts returned to the Company without the approved form will be returned freight collect to the shipper or refused. Returns must be initiated within 30 days of the invoice date. The Return Forms are valid for 30 days, from the date of issue. All Returns are subject to restocking charges. Return parts brought into our remote warehouses, will not be accepted by our personnel, without a Return Merchandise Form from the Main Office. Parts which have been used in any way or manner, including any installation or incorporation into a lift, hoist, or other equipment, shall NOT be eligible for return whether or not a Return form has been assigned. **Please note: Electrical parts or components are not returnable for credit.** This includes all switches, pushbuttons, relays, electric motors, capacitors, fuses, solenoids, power units with wiring issues or any other electrical items. Custom, built to order, special order, and non-stocked genuine parts are non-returnable.
- 10. RESTOCK CHARGE.** Returns are subject to a restocking charge. Refusals are subject to the same restocking charge plus the cost of outbound and return freight charges and/or fees incurred by the Company due to shipment refusal.
- 11. PRICES AND PAYMENTS.** All prices are subject to change without notice. All prices are F.O.B. shipping point. The Company standard terms are net 30 days, C.O.D. company check, C.O.D. cash, VISA, MasterCard, Discover or American Express. However, if in the judgment of the Company, the financial condition of the Purchaser at any time does not justify shipment according to standard terms of payment, the Company may require full or partial payment in advance.
- 12. INTERPRETATION.** This sales order is intended by the parties as a complete and exclusive statement of the terms of their agreement. It supersedes all prior agreements, written or oral. No course of prior dealings between the parties and no usage of the trade shall be relevant to supplement or explain any terms used in this sales order. Acceptance or acquiescence in a course of performance rendered under this purchase order shall not be relevant to determine the meaning of this sales order even though the accepting or acquiescing party has knowledge of the nature of the performance and opportunity for objection. Whenever a term defined by the UCC is used in this sales order the definition contained in the UCC shall control.
- 13. MODIFICATION.** This sales order can be modified or rescinded only by a writing signed by both parties.
- 14. WAIVER.** No claim or right arising out of a breach of this sales order can be discharged in whole or in part by a waiver or renunciation of the claim or right unless such waiver or renunciation is supported by consideration and is in writing signed by the aggrieved party.
- 15. ASSIGNMENT.** No right or interest in this sales order shall be assigned by either party without the written consent of the other and no delegation of any obligation owed, or of the performance of any obligation by either the Company or Purchaser shall be made without the written consent of the other party. Any attempted assignment or delegation not made in conformity with this paragraph shall be wholly void and totally ineffective for all purposes.
- 16. TIME TO PERFORM AND BRING ACTION.** Time is of the essence of this sales order. Any action for breach of this sales order shall be commenced within two (2) years after the cause of action has accrued. Any party who loses any litigation shall reimburse the other party for costs including reasonable attorney's fees. The exclusive jurisdiction for any legal action shall be the Circuit Court of DeKalb County, Illinois.
- 17. APPLICABLE LAW.** This sales order shall be governed by the UCC of Illinois as effective and in force on the date of this sales order.



SVI IS YOUR ANSWER!



DIRECTFIT™
SVI's DIRECT FIT™ BRAND

- Air Compressor Parts and Filters
- Auto Lift Parts for Any Brand
- Auto Lift Cables and Chain
- Auto Lift Power Units and Parts
- Auto Lift Sheaves / Pulleys and Chain Rollers
- Brake Lathe Repair Parts for All Makes
- Exhaust System Products
- Fluid Delivery Repair Parts
- Hose Reels and Hose Stops
- In-Ground Auto Lifts
- Lubrication Equipment Repair Parts
- Petroleum / Service Station Pump and Tank Products
- Repair Parts for Gasboy Consumer Series
- SESM Lifts for ATV/UTV, Golf Cart and More!
- Tire Changer Repair Parts
- Transfer Pumps
- Turf Attachments for 2-Post Lifts
- Vehicle Lifting Systems
- Wheel Balancer Accessories

SVI International, Inc.

155 Harvestore Drive • DeKalb, IL 60115

800-321-8173 • 815-748-0200

Fax: 800-899-1784 • 815-748-0210

Entire contents copyright © 2022, SVI International, Inc.

Information and Catalogs Online:
www.sviinternational.com