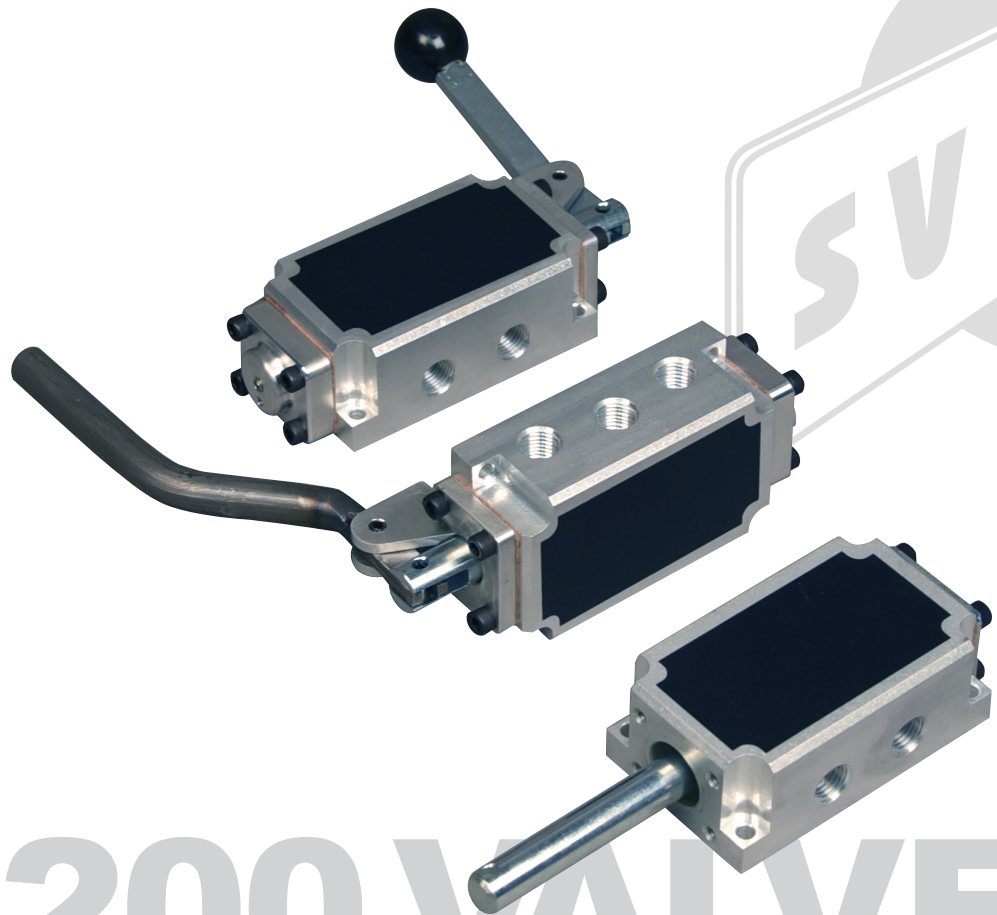


USES:

Air Cylinders
Material Handling
Slides
Air-Motors
Gates
Packaging
Tire Changing Machines
And so much more...

BENEFITS:

Low-Cost
High Flow
Repairable
Long Service Life
From an Awesome Company
High Quality Brass
and 6061 Aluminum



Pneumatic Directional Control Valves

Also, popularly found on many Tire Changer Machines

1/4" NPT Ports • 150 psi max.

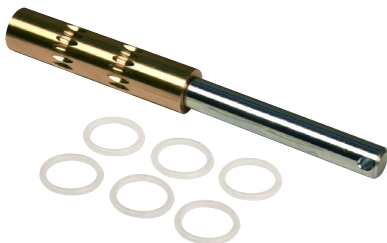
4-way, 2- and 3-position pneumatic directional control valves are suited for a wide variety of applications. These valves will provide smooth manual or automatic operation, regardless of how they are implemented or utilized pneumatically in operating systems and applications. Durable materials are used in the construction of each valve to provide for long service life and use in a wide variety of applications.

Many valve configurations are available including manually actuated or pilot actuated with a variety of control positions. Some valves feature a spring return design to center, end or closed port with or without air-assist. This broad selection

allows you to choose the right valve to properly engineer or operate any system the design may require for this type of pneumatic directional air control valve.

Established in 1977, SVI is an awesome company well known for a high level of quality and professional integrity. Using a value pricing model, SVI products are cost-effective and a top choice among design engineers and industry system specialists. Industries served include automotive, wheel and brake service, fluid power, lubrication, compressed air, petroleum and just about any other industry with demanding needs applicable to the vast array of SVI capabilities.

SVI is your answer!



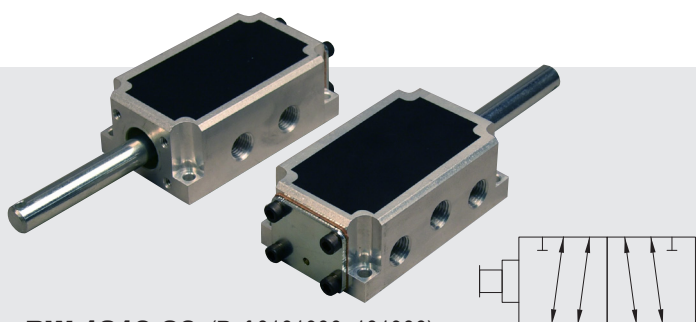
SVI International, Inc.

BALTIMORE • CHICAGO • LOS ANGELES



Posi-Trol™

Pneumatic Directional Control Valves 1/4" NPT Ports • 150 psi max.

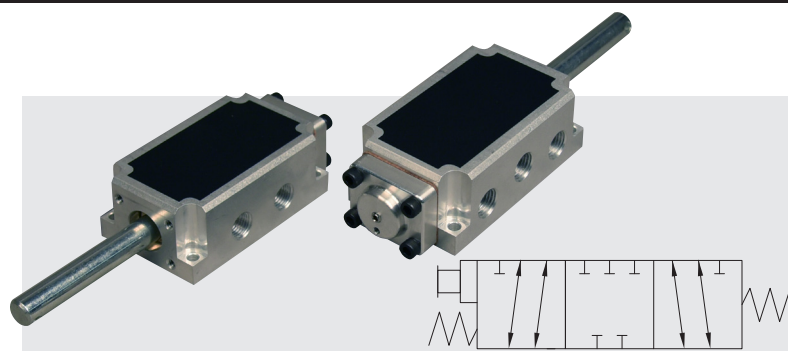


BW-1219-86 (Ref 8181986, 181986)

4 Way, 5 Port, 2 Position, Manually Actuated,
1/2" Diameter Position Rod with Clearance Hose for 3/16" Roll Pin

For Coats®* Tire Changers Models:

- 5030A, 5030E, 5035A, 5035E, 5040A, 5040E, 5050A, 5050E, 5060E, 5060EX, 5060A, 5060AX, 5065A, 5065AX, 5065E, 5065EX
- 6050A, 6050AX, 6050E, 6050EX, 6060AX, 6060EX, 6065A, 6065AX, 6065E, 6065EX
- 7050AX, 7050EX, 7055AX, 7055EX, 7060AX, 7060EX, 7065AX, 7065EX, 7660AX, 7660EX, 7665AX, 7665EX,
- APX80A, APX80E, APX90A, APX90E (used for tilt tower control on APX models).
- RC-100, RC-150EX, RC-200EX

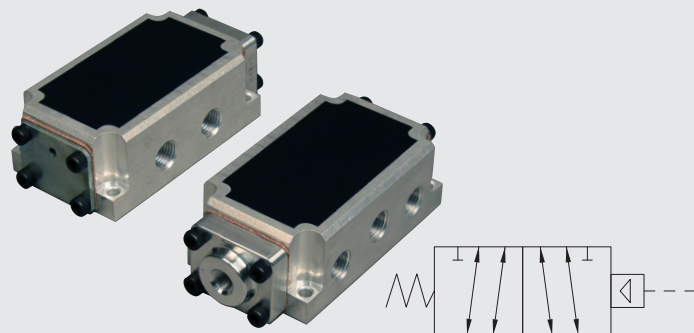


BW-1236-91 (Ref 8184369, 81843691 184369, 1843691)

4 Way, 5 Port, 3 Position, Closed Port Spring Return Center Position,
Manually Actuated, 1/2" Diameter Position Rod with Clearance Hose for 3/16" Roll Pin

For Coats®* Tire Changers Models:

- 5030A, 5030E, 5035A, 5035E, 5040A, 5040E, 5050A, 5050E, 5060A, 5060E, 5060AX, 5060EX, 5065A, 5065AX, 5065E, 5065EX
- 6050A, 6050AX, 6050E, 6050EX, 6060AX, 6065A, 6065AX, 6065E, 6065EX
- 7050AX, 7050EX, 7055AX, 7060AX, 7065AX, 7065EX, 7660AX, 7665AX

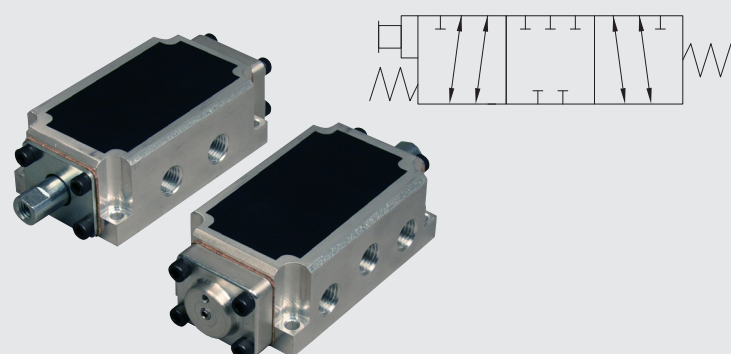


BW-1219-95 (Ref 8181995, 181995)

4 Way, 5 Port, 2 Position, Pilot Actuated, Spring Return

For Coats®* Tire Changers Models:

- 5060EX,
- 6060AX, 6060EX
- 7060AX, 7060EX, 7065AX, 7065EX, 7660AX, 7660EX, 7665AX, 7665EX

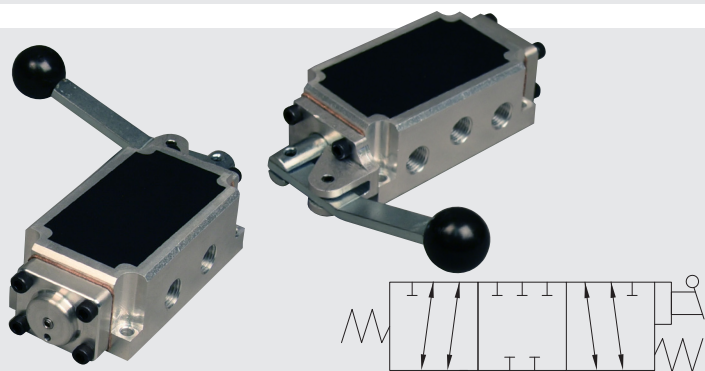


BW-1248-78 (Ref 8184878, 184878)

4 Way, 5 Port, 3 Position, Closed Port Spring Return Center
Position, Manually Actuated, Position Rod

For Coats®* Tire Changers Models:

- APX80A, APX80E, APX90A, APX90E

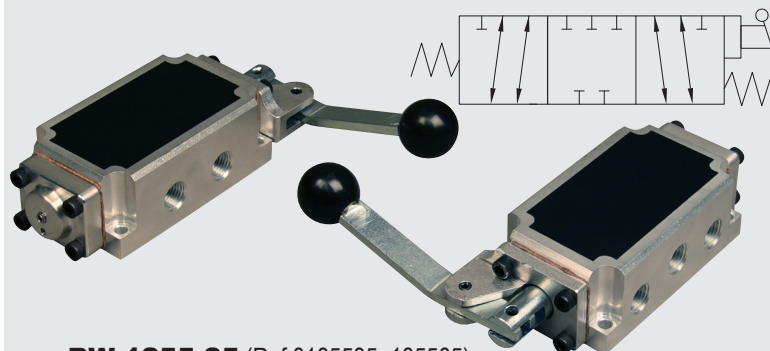


BW-1236-42 (Ref 8183642, 183642)

4 Way, 5 Port, 3 Position, Closed Port Spring Return Center
Position, Manually Actuated, R.H. 1" Diameter Ball-End Lever

For Coats®* Tire Changers Models:

- 7050AX, 7050EX, 7055AX, 7055EX, 7060AX, 7060EX, 7065AX, 7065EX, 7660AX, 7660EX, 7665AX, 7665EX



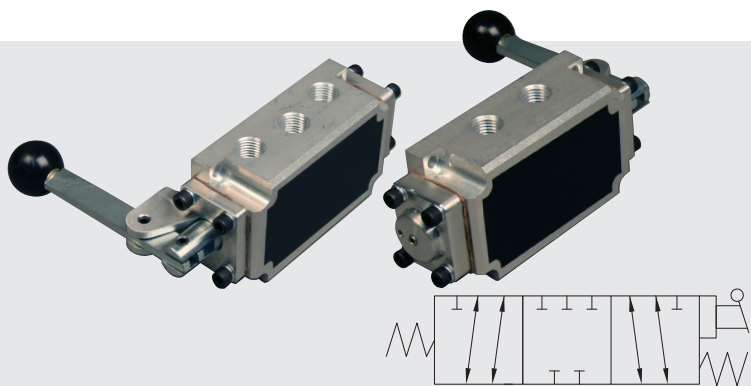
BW-1255-85 (Ref 8185585, 185585)

4 Way, 5 Port, 3 Position, Closed Port Spring Return Center
Position, Manually Actuated, L.H. 1" Diameter Ball-End Lever

For Coats®* Tire Changers Models:

- APX80A, APX80E, APX90A, APX90E
- Some Baseline

Standard Seals are Nitrile. All valves can be made available with Viton or Hydrogenated Nitrile Seals.

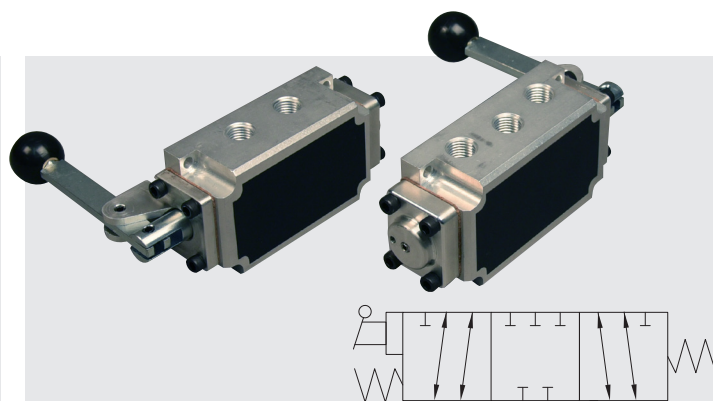


BW-1255-86 (Ref 8185586, 185586)

4 Way, 5 Port, 3 Position, Closed Port Spring, Return Center Position, Manually Actuated, Vertical 1" Diameter Ball-End Below Mount Lever, Cylinder Ports Right Side

For Coats®* Tire Changers Models:

- APX80A, APX80E, APX90A, APX90E

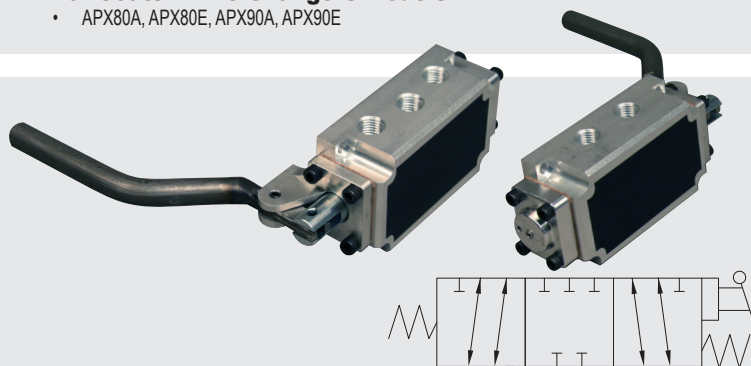


BW-1256-21 (Ref 8185621, 185621)

4 Way, 5 Port, 3 Position, Closed Port Spring Return Center Position, Manually Actuated, Vertical 1" Diameter Ball-End Below Mount Lever, Cylinder (2) Ports Left Side

For Coats®* Tire Changers Models:

- APX80A, APX80E, APX90A, APX90E

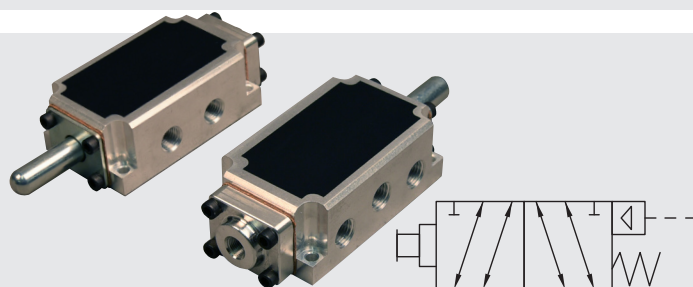


BW-1255-81 (Ref 8185581, 185581)

4 Way, 5 Port, 3 Position, Closed Port Spring Return Center Position, Manually Actuated, Vertical 1/2" Diameter Angled Below Mount Lever, Cylinder (2) Ports Right Side

For Coats®* Tire Changers Models:

- APX80A, APX80E, APX90A, APX90E



BW-1271-65 (Ref 87165 / 8787165)

4 Way, 5 Port, 2 Position, Manually Actuated, 1/2" Diameter Ball-End Push Rod, Spring Return with Air Assist

For Tire Changers Models:

- Hofmann Monty 2700
 - FMC 7600, 7700, & 8800 Center-Post Tire Changers
- Note: Most FMC 8800 models had 3 air connections to the valve, but some early models had 4 air connections. The new valve does not require the 4th connection (at the back of the valve) and that hose should be capped or plugged.
- Coats®*



As an awesome company serving many fields, custom and standard hydraulic cylinder manufacturing sets SVI apart from others. Whether a customer needs one, two or ten cylinders the response time and pricing seems to always meet expectations.

These single-acting, high capacity cylinders are manufactured in the SVI DeKalb, IL plant in sizes ranging from 5" on up to 12-5/8" in diameter. For harsh environments, Armoloy industrial chrome plating is an available option and stainless steel cylinders can be specified for food and pharmaceutical applications. SVI is valves, controls, cylinders and more.

Posi-Trol™



All names, numbers, symbols and descriptions are used for reference purposes only. It is not implied that any part listed is the product of these manufacturers.

*COATS is a registered trademark of Hennessy Industries, Inc. SVI International, Inc. is not associated in any way with Hennessy Industries, Inc.

Entire Contents ©2019, SVI International, Inc. Prices Subject to Change without Notice.

- Accumulator Circuits
- Mobile Equipment
- Test Stands
- Oil Field
- Marine
- Machine Tools
- Manufacturing Control
- Hydraulic Motor Control
- And more...

COMPETES DIRECTLY WITH:

**Barksdale, Enerpac,
Parker, SPX,
Snap-tite**

Posi-Trol™ Valve



SVI # PT-P4330HUCS

SVI Posi-Trol™

A new more cost-effective alternative to other makes of precise metering, high efficiency valves are in the SVI pipeline.

FEATURED VALVE NOW AVAILABLE:

Spring Centered, Closed Center, Horizontal, 4-port, 3/8" NPSF, 3000 psi, Manually Operated. Ask for SVI # PT-P4330HUCS

Use SVI Posi-Trol™ valves to easily control fluid direction with virtually no leakage. The flow through rotary design provides excellent capability to withstand the most demanding hydraulic or pneumatic design functions.

Posi-Trol™ valves are intended for any use where precision metering control and high performance is a must.

Call today for the 3/8" PT-P4330HUCS valve.

With public companies in a mad frenzy to buy up their competition to satisfy shareholders with artificial growth, the privately-held SVI forges for internally driven organic conglomerate style growth.

Back in April of 2013, Parker Hannifin acquired Snap-tite and later the Snap-tite valve used in the automotive lift industry was discontinued or superseded. Since there was now no suitable valve with the right port positions for the application, SVI started designing it's own line of valves. The end result is SVI Posi-Trol™. These valves are available to the fluid power and automotive lift industry professionals. The BH-9765-05 a/k/a PT-4330HUCS is a stock item. This valve is also used on Rotary lifts to control directional travel of moveable cylinders in heavy duty vehicle lift systems equipped with a hydraulic drive assist. Posi-Trol™ valves by SVI and can be used or specified by anyone in the fluid power industry for a myriad of applications. The PT-4330HUCS valve also functions as a beautifully made "Direct Fit" SVI OEM replacement for the Snap-tite valve once used by Rotary Lift under p/n FA3191.

The Posi-Trol™ Valve from SVI is the best valve going and one of the sharpest looking valves on the market. If you are interested in other variations of the Posi-Trol™ Valve from port size to different control configurations, etc. and have any customers with significant usage, just let us know and we will be happy to prepare special pricing for you. Put SVI, a privately held company to work for you. SVI is your answer!



SVI International, Inc.

155 Harvestore Drive • DeKalb, IL 60115

800-321-8173 • 815-748-0200

fax: 800-899-1784 • 815-748-0210

www.sviinternational.com

BALTIMORE • CHICAGO • LOS ANGELES