



The Twin Post



Newsletter by SVI and "Shake and Bake" Productions

Update for the SVI Line of Intentionally Designed Equipment & Repair Parts—February 2018

- Baltimore
- Chicago
- Los Angeles

THIS ISSUE:

The General Knows Who to Call...

Improved Efficiency

Someone Had to be the First in Turf

Privately Held Conglomerate...

"Direct Fit" Cylinder Assemblies and Components for Newer Style Rotary In-Ground Fore-and-Aft Lifts

Super Tough, Tougher to Beat!

SESM Lifts—An American Success Story

Fearless Ferrule Lock Fittings

It's a Secondary First

Orange is the New Pump

The Best Replacement Parts are SVI OE

Fuel Transfer Pump

Sway Away

Hose Hanger Accessory

Because of You!

Leverless Leverage

Just Plain Awesome!!!

Adapter with Rubber Pad for Mohawk Lifts

Roller to Slide Block Conversion Kit

Since 1977

The General Knows Who To Call...

DeKalb, Illinois - Time after time, SVI is called on to meet some of the most urgent, specialty requirements found in industry. Whether is it specialty lift systems for the production of huge turbines or custom flush floor mount recessing lifts for refurbishing 15,000 lb. electrical transformers, SVI is industry's answer. And, by the sound of it you may think the "General" being referred to in this article is General Electric, well not quite...

Yet again, when General Motors needed something special for two of their specialty recessed Manitowoc lifts, they didn't even bother calling anyone else. Why would they? SVI is the "Can Do" company, willing to always take on special projects and industry needs.



It is a widely known fact by those in industry that SVI is innovatively excellent. Automotive lift equipment distributors have become so used to SVI's excellence, it is recognized as commonplace, routine and truly counted on.

General Motors knows there is nothing routine about the jobs SVI has completed for them. And, when it became important to modify two specialty lifts, SVI went right to task. The existing in-ground

side-by-side lifts needed to be able to lift more weight and accommodate more new top secret vehicle models that are in the works.

The scope of this project was to redesign a superstructure capable of 10,000 lbs. in lifting capacity, while maintaining a size profile to fit into the current recessed pockets originally installed with the lifts. These pockets have



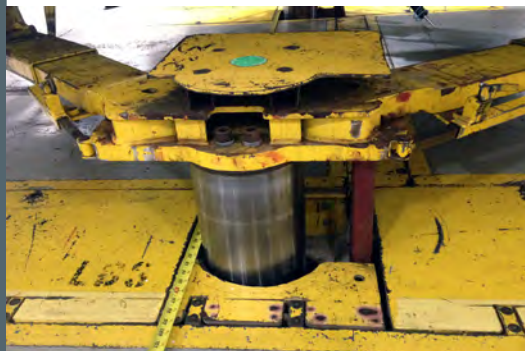
cover plates that can be placed over the openings for a flush floor effect when the lifts are not in use. SVI engineering had to work diligently to ensure the new high capacity superstructures would fit and still allow safe and proper use of the cover system.

You cannot just simply install a new superstructure and suddenly call an 8,000 lb. capacity lift a 10,000 lb. lift, it is just not that easy. There are other factors that must be considered. All the equalizer and lock components must also be evaluated to ensure the proper safety factors are met or exceeded. SVI engineering considered all of this very carefully. The resulting analysis concluded that new stronger rack bars, pinion gears, cross shaft and

lock components must be utilized as well to just properly confirm and validate the newly stated lifting capacity.

For engineered assurance, SVI is your Answer!

What a successful project. Thanks GM!

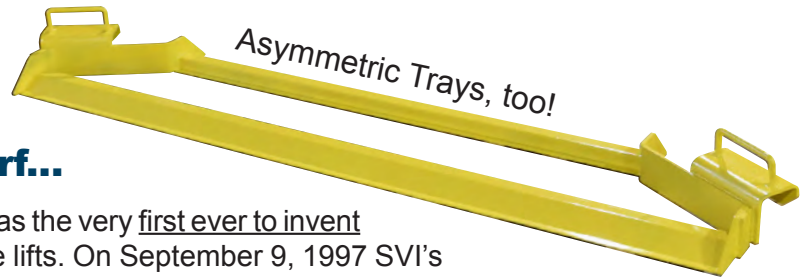
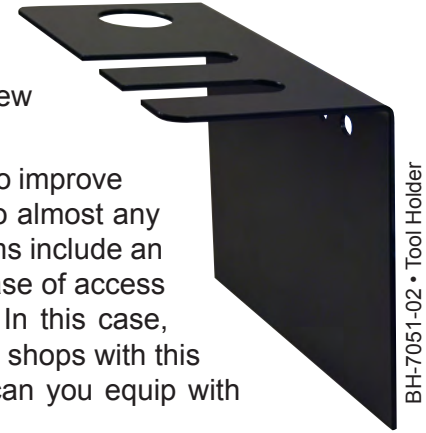


Improved Efficiency, a/k/a the Legend effect.

Kip Legend of Legend Auto Lift and Hoist contacted SVI with a special need and new idea. Almost immediately, SVI sprang into action and made the idea a reality.

Kip's customer (Quick Lane) wanted a way to eliminate steps for the technicians to improve efficiency. The vision was for a special adapter bracket that could be attached to almost any two-post surface-mount lift and hold three essential items. In this case, those items include an air chuck, lug nut torque bars and an air impact. These items are essential for ease of access in any high volume tire and service outlet. In this case, Quick Lane is fast equipping more and more shops with this SVI tool holder, compliments of Kip. Who can you equip with this great idea?

To take advantage of turning your ideas into a meaningful product for use by many, all you have to do is contact SVI. Every SVI sales representative can help you get your idea headed right into the SVI engineering department for quick turnaround and realized reality. To learn more about this or any other products or services SVI provides, call today.



Someone Had to be the First in Turf...

No. 1—The First: An SVI wholly-owned subsidiary was the very first ever to invent Turf / Utility Vehicle Attachments for use on automotive lifts. On September 9, 1997 SVI's very own MLM Lifts and Manufacturing (formerly known as Manitowoc Lift) developed the very first production drawings for a Turf Equipment Lifting Accessory. This innovative product line has allowed thousands of lift owners to convert their automotive lifts into a multi-functional tool. This allows for both service of their cars and pickup trucks but also ease of repair access to all the turf and small maintenance equipment also found in and around their shop.

Turf / Utility Attachments are an ideal tool to incorporate into any shop that has a two-post automotive lift that also has the need for servicing all types of other equipment. Turf Attachments are ideal for park districts, golf courses, outdoor power equipment dealers, municipalities, ATV dealers and just about anywhere else that requires more versatility from their lifts.

SVI has emerged and remains the leading supplier in its field for turf / utility attachments. The nimble nature of SVI engineering and strong focus on customer service allows for a wide range of flexibility in producing attachments to fit virtually all makes and models of two post surface mount lifts encountered in the field. Put the SVI team to work for you today, attachments can be made for any two post lift including those with true asymmetric or triple stage swing arms. For a whole variety of turf / utility attachment solutions—SVI is your Answer!

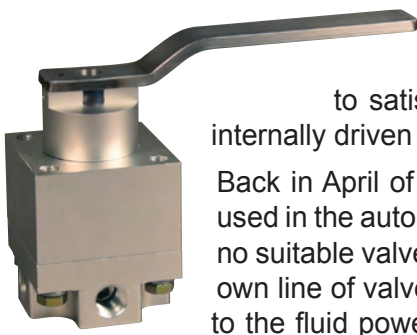


SVI is your Answer!

innovatively

Privately Held Conglomerate...

With public companies in a mad frenzy to buy up their competition to satisfy shareholders with artificial growth, the privately-held SVI forges for internally driven organic conglomerate style growth.



Back in April of 2013, Parker Hannifin acquired Snap-tite and later the Snap-tite valve used in the automotive lift industry was discontinued or superseded. Since there was now no suitable valve with the right port positions for the application, SVI started designing its own line of valves. The end result is SVI Posi-Trol™ valves will soon be made available to the fluid power industry. Those in the automotive lift industry don't have to wait. SVI engineers made sure the first valve to be fully developed was the BH-9765-05, which is used on Rotary lifts to control directional travel of moveable cylinders in heavy duty lift systems equipped with a hydraulic drive assist. This valve is made by SVI and can be used by anyone in the fluid power industry for certain applications. Wonderfully, the valve also functions as a beautifully made "Direct Fit" SVI OEM replacement for the Snap-tite valve once used by Rotary under p/n FA3191.

The Posi-Trol™ valve from SVI is the best valve going and one of the sharpest looking new valves on the market. If you work on heavy duty lifts, hands down this "Direct-Fit" valve is what you need.



BH-9765-05
(Ref FA3191BK)
for Rotary Lift

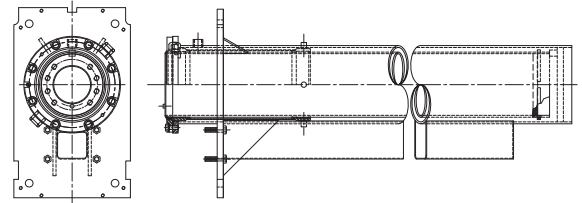


"Direct Fit" Cylinder Assemblies and Components for Newer Style Rotary In-Ground Fore-and-Aft Lifts.

DeKalb Illinois - The home of American-made light and heavy duty in-ground lifts and replacement cylinder assemblies has more capabilities than ever.

SVI is pleased to announce that low cost, high quality replacement cylinder assemblies are available for Rotary heavy duty in-ground lifts. These cylinders are already growing in popularity with select distributors who perform in-ground lift work. They will be your choice in time as more and more aging lifts will need new cylinders.

SVI cylinders are "Direct Fit", built to exacting specifications and completely match up to any existing cylinders you will need to replace. You can even use aftermarket Rotary parts and seals in SVI built cylinders when the time comes if you want, they are just that exact. The best thing is that they are U.S. made to help you, government and independent lift owners save big money when replacements are needed. Real value, respect.



These cylinders are for use on the following Rotary lift series models: 52C, 52HC, 52P, 60C, 60HC, 60P, 70C, 70P, 70DSC, 70DSP, 70HC, 70Q, 703C, 703P, 703Q, 10210C, 10210DS, 10210P, 10210Q, R70C, R703C, R703P, R703Q, R10210C, R10210DS, R10210P, R10210Q and so on...

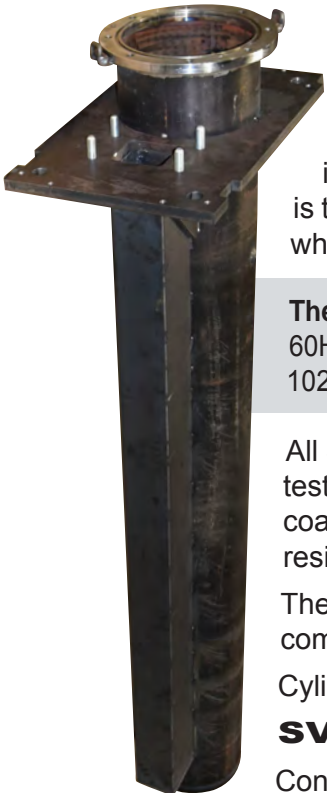
All SVI cylinders are precision-made, inspected, assembled and hydraulically tested under load for smooth and premium operation. Each casing is fiberglass coated and finished with a gel coating to provide years of trouble-free corrosion resistant service.

There are two choices for some cylinders, but no choice so complete and so competitively priced as SVI.

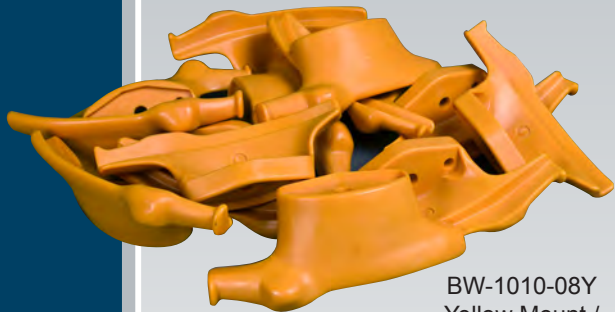
Cylinders for Gilbarco, Globe, Manitowoc, Weaver, now **Rotary**, and more!

SVI is your Answer!

Contact your favorite SVI representative for your special pricing—win more jobs!



Super Tough, Tougher to Beat!



BW-1010-08Y
Yellow Mount /
Demount Head for
Many Tire Changers

The selection of replacement products for Tire Changers just keeps getting bigger. SVI is now starting to get major accolades and attention from the big players in the industry.

Ready at a moments notice to invest in new tooling and resources to make more parts for tire changers available has been impressive. Some of the biggest names are becoming huge fans and SVI distributors are benefiting from highly competitive pricing and an ever-growing inventory.

Order some duckheads and learn more today.

SESM Lifts an American Success Story

DeKalb, Illinois - In a unique move, SVI has positioned itself as the hands down leader of high quality lifting systems found in outdoor power equipment shops, etc. The pace of orders for SESM style lifts has exceeded all expectations. ATV and UTV dealers are snapping them up as quickly as they can.



Swing Arm Style
Superstructure



There is no other lift available on the market today that meets a shops needs with the precision and ease of operation of an SESM. Plus SESM lifts are available in so many different configurations including full 360° rotation, the applications are endless in the small equipment sales and service arena they serve.

Applications can also be as diversified as use in animal hospitals, manufacturing facilities and even personal garage/outbuildings of those who have large parcels of land to maintain. A favorite in the agriculture business, you can find them in the barn used for small equipment and tractor and skid steer attachment repair.

SESM lifts have even been incorporated in the production lines of a major hospital bed manufacturer to shorten bed production times, increase efficiency and lower costs. If you own a big piece of land or lots of toys, as an SVI distributor you owe it to yourself to own one. SVI product dealers can get some excellent pricing. SESM lifts are super unique, easy to install, relocatable, require no piping and last a lifetime. What are you waiting for?

Fearless Ferrule Lock Fittings

For decades steel hydraulic line tubing and tube fittings have been a growing part of the SVI product line. Recently the whole product line was expanded to provide more size availability and more selection. Ferrule lock style tube fittings were added for those of you who do not trust O-ring seal tube fittings. Yes, SVI has both types of fittings and more sizes of tubing and fittings available.



Since 1977

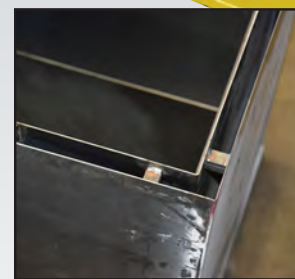
It's a Secondary First

When you have a special need beyond all the bread-and-butter parts SVI offers, you know what number to dial. 800-321-8173

The non-stop steady supply of the bread-and-butter stock parts that SVI ships on a daily basis are what allows SVI to provide the “drop everything” attention to special requirements. In the late fall of 2017, SVI was asked to build two new power units for some heavy duty truck lifts in the State of California. Sounds like a simple request, but hold everything, the key requirement was build it with “secondary containment”.

Just like every other project, SVI engineering shifted immediately into 5th gear and designed a power unit with a reservoir that provided secondary containment. This was done properly and quickly to meet the strict specifications required of the customer. Once engineered, approval drawings were submitted and a final approval was granted by the customer. SVI engineering enjoys special projects like this and in the end they just serve to benefit everyone including you and the overall scope of the SVI product line. Secondary containment power units are now a fixed part of the SVI product line and ready for immediate production the next time the need arises.

Distributors in states like California and others that have stringent secondary containment needs are now equipped with yet another SVI weapon in their arsenal to easily and affordably handle replacement and upgrade power units needs. SVI is your Answer!



Detail of Double Wall / Secondary Containment Prior to Assembly



Orange is the New Pump

SVI's non-stop pursuit of new products at fair and reasonable pricing has resulted in this completely portable electric transfer pump.

This pump designed by SVI engineering is available exclusively from SVI. It was designed with transferring waste oil and other commonly moved fluids in mind. It is ruggedly constructed for trouble free operation. Each pump is available standard without a filtration system. You can add an optional spin-on replaceable filter type filtration system with a non-filtered bypass to the pump for a small additional charge. These pumps are assembled and tested at the SVI manufacturing headquarters in DeKalb, Illinois, USA.

FEATURES / BENEFITS:

- Round carrying handle for comfort
- Compact design for easy transportation (unit weighs 48 pounds)
- Rubber guard around frame protects surfaces the pump is placed on from being gouged or scratched
- 22" power cord

MOTOR SPECIFICATIONS:

- Explosion-Proof UL Listed Motor
- 1/3 HP
- 1725 RPM
- 115 VAC, 60 Hz
- 5.0 FLA
- On/Off Power Switch
- 30 Minute Duty Cycle

PUMP SPECIFICATIONS:

- Gear pump with cast Iron housing and hardened steel helical gears
- Pressure relief valve (internal bypass)
- Self-priming
- 10.5 GPM (may vary slightly depending on temperature/viscosity of oil and suction line length)
- 1" NPT elbows included
- Suction lift: 15 ft.
- Suitable for transferring viscous or semi-viscous fluids such as: bulk motor oil, waste motor oil, hydraulic oil, gear lube oil, waste vegetable oil, fuel oil, mineral oil, silicone oil, and transformer oil
- Transfer fluids with a viscosity of up to 500 cSt. For comparison, this is equivalent to 5W-30 motor oil at about 30° F
- Operates at temperatures up to 200° F

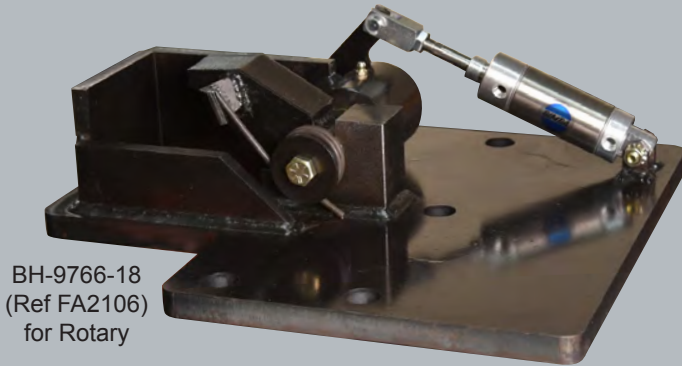


Check us out online: www.sviinternational.com

As the old saying goes: An orange circle rolls better than a blue oval.

SVI is your Answer!

The Best Replacement Parts are SVI OE



BH-9766-18
(Ref FA2106)
for Rotary

It is absolutely amazing to see how many parts are stocked in the SVI inventory vault. It is even more amazing when you realize the savings you experience that actually does go hand-in-hand with high quality.

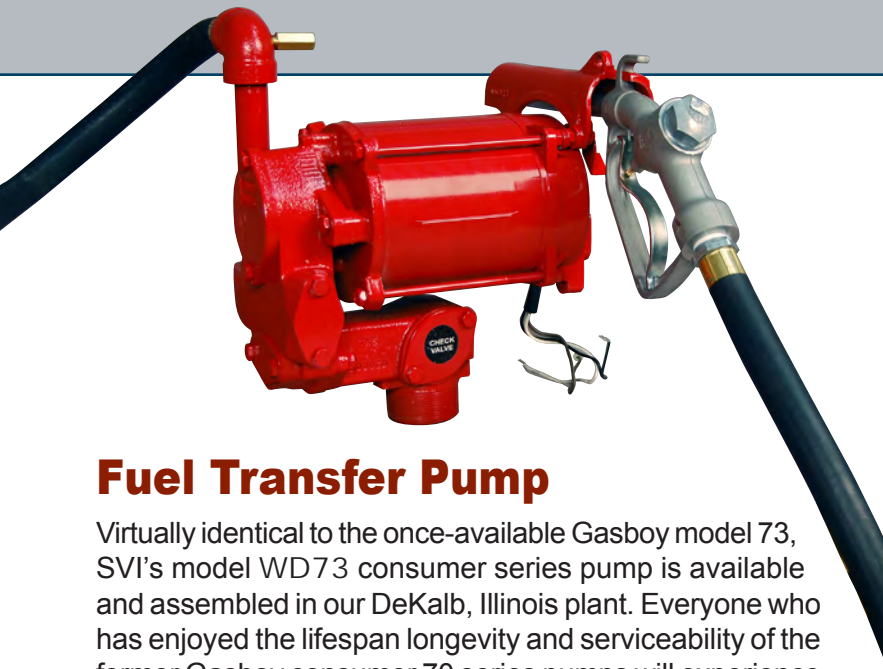
Others may feel comfortable charging a lot more for something that is maybe equal to what SVI provides. It is truly a shame to pay more for something when there is a better alternative. Out of virtually thousands and thousands of low-cost SVI product examples, one item deserves the spotlight in this issue of The Twin Post.

Ouch! The other company that supplies this safety leg lock assembly for Rotary 10-5/8" heavy duty dual rear cylinders asks a full blown \$1,892.00 retail price. That is a crazy number of multiples over the cost to properly produce this part. It is a good thing SVI does not have greedy shareholders breathing down necks to squeeze every cent they can from the pockets of their customers. The SVI retail price for the BH-9766-18, which cross-references to the Rotary FA2106 part number is **only \$993.30**. Yes, the SVI retail price is almost half that of what others charge.

SVI distributors pay a lot less than the retail number. This is savings you can't afford to ignore. When it is time to replace this lock assembly treat your government and independent heavy duty lift owners with real value, respect.

SERVICE • VALUE • INNOVATIONS

Every one deserves the best.



Fuel Transfer Pump

Virtually identical to the once-available Gasboy model 73, SVI's model WD73 consumer series pump is available and assembled in our DeKalb, Illinois plant. Everyone who has enjoyed the lifespan longevity and serviceability of the former Gasboy consumer 70 series pumps will experience the same results with this pump. The **specifications are identical** and the pump is priced right.

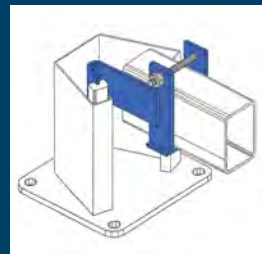
Put this pump to work and order some WD73 pumps today. They come complete as pictured with the nozzle and fuel line. We also offer the ever-useful Install-A-Socket. There are two versions of this pump available, one for diesel and one for unleaded. Contact your favorite SVI representative to place your orders.

Sway Away!

Take the sway out of select Challenger four post lifts.

Order SVI BH-7237-50K and you will make some customers very happy.

The SVI product line just keeps on expanding and valuable distributor input is often the catalyst.



Hose Hanger Accessory

A long time friend of SVI (Dick Kennedy) had a customer who wanted to address "airline on the floor" issues. The Mazda dealership he was working with needed an inexpensive way to allow their techs to keep airlines neatly coiled and up off the floor while still being near the work area.

The BH-7070-20 series of hose hangers was just what they needed. Easily installed on any two or four post lift, they are available in your choice of red, yellow, or black.



Because of You!

800-321-8173

The SVI cylinder manufacturing cell operates non-stop.

Because of your orders and complete confidence in SVI 100% U.S. Made cylinders, SVI is hiring additional welders / machinists to keep up with your demands. Striving to provide quicker turnaround and more different types and

styles of cylinders for automotive and industrial applications, SVI cylinders are turning up all over the World.

One recent, highly specialized cylinder was just produced and shipped to the United Kingdom for use in a batching operation. This floor mount cylinder was built as a self contained fully hydraulic assembly that features an air/oil tank custom fabricated around the outside of the cylinder casing. This type of assembly requires precision and specialized trained personnel to produce.

SVI's customer base for cylinders is growingly vast and spans many segments of industry. Our most popular cylinders still remain those heavy duty cylinders produced for truck and bus lifts. Amazingly enough though complete single post in-ground automotive lifts (FS-10s) are still a popularly purchased product.



Leverless Leverage

One day out of the blue a distributor from New York calls and says, "you should make this available".

Without giving it a second thought SVI invested time and tooling dollars to make this available to all SVI distributors at the right price. If you sell parts for tire changers and are not getting the right ones from SVI, you are probably paying too much.

SVI has an awesome selection of low-cost commonly replaced parts for tire changers available.



BW-4009-34
Tool Head
for Hunter

BENEFITS

- The SC-363 is ideal for many supercars such as Porsche, Corvette, and race cars including Nascar, Indy Car, Sprint Series, and others. No matter what your lifting needs may be—SVI is your Answer!
- SAFEST: Hands-down and unequivocally safer than any surface-mount lift found widely in use in shops today. An SC-363 lift does its work from directly under the vehicle.
- Helps recruit and retain the best shop technicians
- Operates off shop-air compressor / Self-contained unit, no under floor piping, no external air/oil tank
- Various Stroke Lengths
- Design that lasts more than a lifetime
- Low maintenance, simple design
- Greatly improves shop productivity
- Ideal for rental properties—this lift is easily removed for relocation. Simply unbolt from the floor and remove. Add some backfill to existing hole and patch the concrete like it was never there. Reinstall lift in your new location.
- Optional 360° rotation keeps you between the work and the workbench
- No obstruction when lowered—park right over it
- Superior operation, safety and looks compared to surface-mount
- Thick fiberglass and gel coat protective coating applied to casing to prevent corrosion and provide decades of trouble-free use.
- **The best purchase a serious shop or enthusiast can make!**

Just Plain Awesome!!!

Originally, SVI's super unique SC-363 lift was built with Porsche 911s in mind. And, many of these lifts can be found in high end Porsche shops and wealthy enthusiast garages.

But, a new class of customers for this lift has emerged. Race teams whether late model, Nascar, Indy Car, Sprint Series or otherwise have developed a real affinity for the ultra-low profile SC-363. They also absolutely love the way this lift operates, the 360° rotation feature and its ease of installation.

It fits perfectly in the shop, with no obstruction and an SC-363 gets the race cars up to a more preferred working height.

We can sell them, how about you?

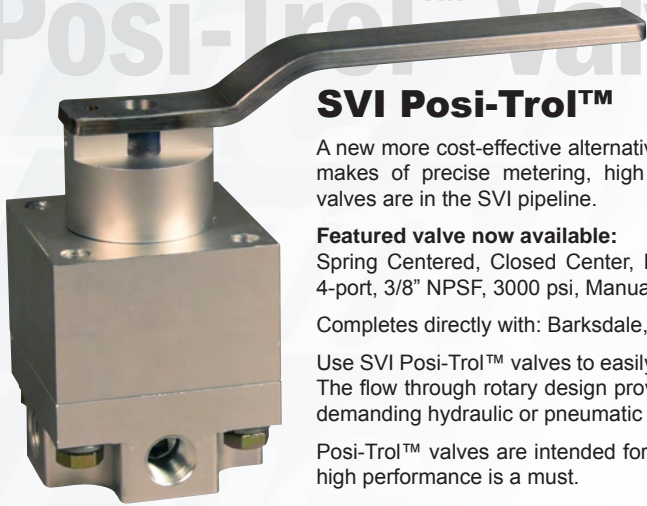
An SC-363 Requires
NO PIPING



/// SC-363 ///
just plain awesome!!!



Posi-Trol™ Valve



SVI # PT-P4330HUCS

SVI Posi-Trol™

A new more cost-effective alternative to other makes of precise metering, high efficiency valves are in the SVI pipeline.

Featured valve now available:

Spring Centered, Closed Center, Horizontal, 4-port, 3/8" NPSF, 3000 psi, Manually Operated. Ask for SVI# PT-P4330HUCS

Completes directly with: Barksdale, Enerpac, Parker, SPX, Snap-tite

Use SVI Posi-Trol™ valves to easily control fluid direction with virtually no leakage. The flow through rotary design provides excellent capability to withstand the most demanding hydraulic or pneumatic design functions.

Posi-Trol™ valves are intended for any use where precision metering control and high performance is a must.

Call today for the 3/8" valve and watch for more details soon.

- Accumulator Circuits
- Mobile Equipment
- Test Stands
- Oil Field
- Marine
- Machine Tools
- Manufacturing Control
- Hydraulic Motor Control
- And more...

SVI Exclusive

For Rotary Lift

Roller to Slide Block Conversion Kit (1) for Open Front Rotary Lift Models

BH-7531-68XK

Uses Replacement Slider: BH-7531-68XS

For Open Front Rotary Lift Models!

- ARO122
- ARO123
- SMO122
- SMO123



Adapter with Pad for Mohawk Lifts

Need an Adapter, Height Extension, or Rubber Pads, Call SVI.



For LMF-12 and TP15

Instead of BH-7340-23 (Ref 012-012-047) with Steel Teeth, use this New Version Adapter.

BH-7340-29



For System 1A

Instead of BH-7341-58 (Ref 025-002-035) with Steel Teeth, use this New Version Adapter.

BH-7340-11



For System 1A

1-1/2" Riser Gets the adapter up off the arm. 1-1/8" Pin Dia.

BH-7340-40

Call today: 800-321-8173

Do you get our weekly specials? Call or sign up online www.sviinternational.com

All names, numbers, symbols and descriptions are used for reference purposes only. It is not implied that any part listed is the product of these manufacturers; however, some parts may be the actual product of these manufacturers. entire contents copyright © 2018, SVI International, Inc.

Twin Post Newsletter

The Twin Post
SVI International, Inc.
155 Harvester Drive
Dekalb, IL 60115

