



THE *Twin Post*

Update for the SVI Line of
Intentionally Designed Equipment & Repair Parts—February 2014

- Baltimore
- Chicago
- Los Angeles

THIS ISSUE:

General Motors
and SVI Solution

Safety Reinvented

ZLT™

Premium Quality at a
Proper Price

Maximum Load
Capacity Stickers

Built to Last and
Still 100% Repairable.
Count on it!

What is this custom
request?

Rearmed and
~~Dangerous~~ SAFE

Rolling Right Along

Get Jacked with
Opportunity

In-Ground Lifts—Nothing
Safer and Nothing Lasts
Longer

Globe Lift Lock Upgrade

Say, "Hello, Dolly!"

FS-28 12K
SUPERstructure

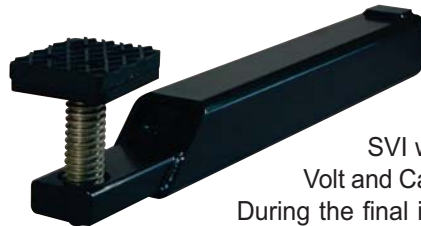
Adapter for Wheeltronic

It's No Hockey Puck

Guess what,
the boy is back!

Since 1977

General Motors and SVI Solution



DeKalb, IL - Well known as the largest and most respected problem solver in the automotive lift industry, General Motors knew exactly that SVI would help with a special production line need. As the new Chevrolet Volt and Cadillac ELR came on-line, an undercarriage clearance issue surfaced. During the final inspection process at the end of the production line, each vehicle is loaded on a lift and carefully quality control inspected. The existing lifts presented a problem as the swing arms would contact the rocker panels before the adapters engaged the lifting point. Obviously unacceptable, General Motors, the World's largest vehicle manufacturer, needed a solution and fast.

Turning immediately to SVI for help, the SVI engineering team went to work and developed a quick and safe solution using industry standards and appropriate safety factors. With several engineering options available, General Motors selected SVI's recommended solution and quickly re-equipped their lifts with 72 new arms designed specifically to safely and properly lift the Chevy Volt and Cadillac ELR. Now every one of these cars crosses an SVI lifting solution before ever leaving the plant, heading to the showroom and ultimately hitting the road. Yes, an SVI product is the first to ever lift the Volt and ELR.

For the safest and most innovative solution, General Motors relied on SVI. Regardless of whether a lift was made yesterday or decades ago, SVI is always willing to provide proven approved and properly engineered solutions that meet and normally exceed automotive lift industry standards and recommendations. SVI is your answer!

Safety Reinvented

Number ONE in lift safety solutions, SVI engineering has been busy at work designing another new solution to satisfy lift owners and ever scrutinizing OSHA inspectors. That's right—every single DTO lift model once made by the Rotary lift company can easily be upgraded to meet current automotive lift industry standards. There are still thousands of these lifts in use today and all of them can use a better safety system over the old single-point system that was welded on them originally.

Incorporating SVI's ever-popular, patented MPTR design, every DTO28 lift can be equipped with a locking equalizer system that provides an initial locking position at 24" of stroke that continues every 6" all the way to full stroke. This is a bolt-on upgrade that literally takes minutes to install. This design exceeds the original single-point locking system and provides more positive engagement for a higher level of safety than previously available.

Plus, there is one other significant benefit that puts this system more easily within reach. The DTOSHA DTO28 upgrade system exclusively available from SVI ships via UPS to greatly reduce transportation costs and handling difficulty. This makes the upgrade more affordable and much easier for SVI distributors to transport to the jobsite. Now, ease of standard compliance is easily available to every owner and operator of DTO28 lifts throughout the World.

SVI has more safety related products available for more lifts to satisfy OSHA inspectors than anyone else in the automotive lift industry. Each SVI product innovation is designed by degreed mechanical engineers to meet or exceed applicable standards and safety factors. SVI - safety re-invented / safely re-invented. SVI is your answer.



800-321-8173



BH-9773-10
10-5/8" Upper Bearing Kit
For Rotary

ZLT™

SVI continues its commitment to the “zero tolerance” demands of government and public agencies. These lift owners are being asked to solve frequent seal replacement costs and leaking concerns.

While transit authorities and others have been reaching out for help with their leaking problems only SVI has committed to discovering a real solution.

In fact, one government run facility had tried repeatedly to solve their leaking problems without result. They insisted that somewhere there had to be someone willing to help them.

Ultimately, they found SVI. Once provided with the scope of their needs SVI innovators went to work and successfully solved the persistent leaking. SVI’s efforts are rewarded and it’s great to hear words like “outperformed everyone’s expectations”.

We need your help stopping the leaks. Industry lift repair professionals know first hand the government and public agency lift users who need “zero tolerance” leak free lifting. SVI and distributors will work closely together to solve these needs whether at the “Rapid Transit” or the local “Municipal Garage”. Let’s stop the leaking.

For high-tech modern seal materials and truly innovative problem solving—SVI is your Answer!

Premium Quality At A Proper Price

These 2-stage spin-up adapters for use on RA Series Rotary lifts are American-Made and priced as you would expect from SVI. They are built at a quality level equal to or exceeding that of others on the market. Each appropriate piece is individually zinc plated before final assembly. The rubber pad is molded in North America using virgin material, for lifespan longevity no regrinded material is used in the manufacturing process.

SVI produces many adapters and height extensions for use on virtually all makes and models of automotive lift found in the North American market. Careful attention to detail is paid and many are available as off the shelf items for same-day shipping. SVI employees take great pride in shipment performance results and product availability. It is still a fact that 92% of all orders taken ship complete the same to next day.

If you ever visit the SVI facility in Illinois you will see the single largest inventory of automotive lift products ever. Those in the lift industry who stop by for a visit are like the proverbial kid in the candy store. There are thousands of different parts and products in stock for immediate shipping. The selection is amazing and the job SVI does at maintaining it is exceptional. Everyone at SVI always appreciates your praise and thanks for a job well done.



Since 1977

BH-7542-66 (OEM FJ6202)
(sold individually)

Maximum Load Capacity Stickers Available

STANDARD OR SECURITY
Actual Size Is 4.75" x 1.75"

1,750 to 36,000 lbs. and so on!

SVI distributors have been asking SVI to start supplying capacity labels for use on load-bearing lift components. Thanks for asking because, as always, the staff at SVI is anxious and willing to help with your requests.

These decals are ideal for height extensions, lift arms, saddles, adapters, sliding sleeve and adapter assemblies, safety legs, scissor lift platforms and mid and low rise lift platforms. Remember the math when applying to swing arms, etc. If a lift's rated capacity is 9,000 lbs. total, each lift arm is only intended for one fourth that of the rated capacity or 2,250 lbs.

The **standard** polymeric calendared vinyl decals with a permanent, pressure sensitive adhesive are for smooth flat surfaces but will still conform to moderately irregular surfaces. The adhesive is permanent and they resist oil and grease.

The **security** decals are a 2 mil silver mirror finish polyester film, with a unique adhesive system that once printed and applied, the word VOID will appear on both the applied surface and the material if the label is removed. The removed label cannot be reapplied and provides tamper-evident protection. They are best for very flat, smooth surfaces and will not conform to uneven surfaces.

To order, contact your favorite SVI representative for pricing. They are sold individually with quantity sensitive pricing. All appropriate capacities are covered from 1,750 on up to 36,000 lbs. for fore and aft lifts. Customs are available on request. SVI and SVI distributors can work together on getting everything labeled up for awareness and safety.



(2 pictured / sold individually)

BH-7237-78
Roller Assembly for
Forward AJ6000 Rolling Jack



BH-7237-91
Roller Assembly for
Forward Rolling Jack
that was made by
C & D Manufacturing



Built-to-Last and Still 100% Repairable. Count on it!

When SVI staff members are out in the field, it is not unusual for them to make unscheduled surprise visits at unsuspecting shops. The visits are merely a courtesy and done to see what cool old stuff can still be found in use. This shop was no exception and they found an FS-10 Globe lift with a Curtis, St. Louis superstructure modified to fit it.

The owner of this shop said he called around for parts and was told the companies are no longer in business and no parts are available. Well, we set the record straight. SVI owns Globe and still builds Globe brand lifts to this day. As for the Curtis superstructure, what do you need? He was told it is all still available and SVI builds it all even to this day. Once he learned the real facts you can just picture his disappointment with those he called that denied availability. Do you think he will ever call them again?

Educating customers about the continual availability of SVI's repair parts for old and new lifts will win distributors respect and true customer confidence. Filling a part request for an old lift is delivering "knock-their-socks-off" customer service.

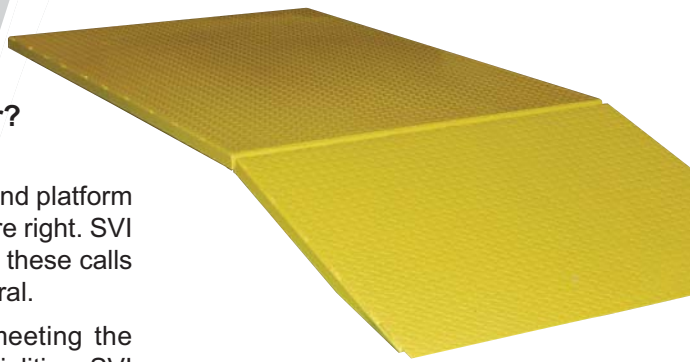
Check us out online: www.sviinternational.com

What is This Custom Request?

Before reading any further, what do imagine this could be for?

If you guessed that this is an SVI custom-made hinged approach ramp and platform to turn an everyday MR-6 mid-rise lift into a true platform lift then you were right. SVI receives calls for custom jobs all the time. Delivering solutions based on these calls is just another value add service SVI provides to the lift industry in general.

Aside from all the safety-related products we continually develop, meeting the needs presented for custom applications is another one of the SVI specialties. SVI does not just immediately say “no, can’t do” like most companies. Instead, SVI is well-known in the industry as the “can do, will do” company. That’s right, callers get SVI’s full attention and sincere consideration of their needs. If you needed a platform like this or a special adapter with full engineering analysis for safety factors and design criteria where else would you turn? When you want it done right and with sound engineered surety, SVI is your answer!



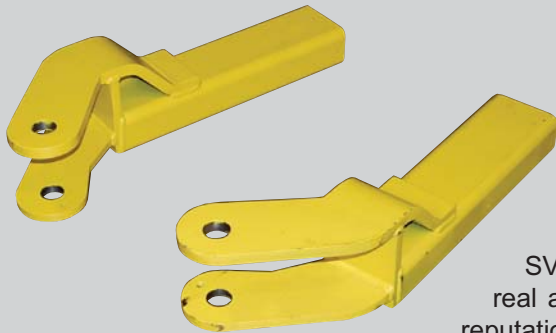
Re-Armed and ~~Dangerous~~ SAFE

As lift company conglomerates continue to discontinue and obsolete lift replacement parts to force new lifts sales one company will be standing behind lift owners. New equipment replacement costs are high and no one should be made to dole out the dough for a new lift just because a part needs to be replaced.

SVI is the one company who will stand with distributors to offer lift owners viable, real and safe solutions for their replacement part needs. Distributors know SVI’s reputation for getting the job done right when it comes to the continual availability of repair parts. Most importantly, distributors want to do the right thing for their customers to keep them loyal and fully confident.

Recently, there has been a wave of items discontinued by some lift companies. This is great news for SVI and SVI distributors because it keeps us busy adding to our ever growing product line but it also provides distributors with a valuable opportunity to keep customers truly satisfied.

Can you just imagine how you would feel if your service truck needed a new water pump and you were told “nope not available buy a new truck”. It wouldn’t be right would it? You would be infuriated and off you would go to NAPA to get a water pump and keep your service truck making money for you for years to come. When you need a lift repair part whether it be new arms or virtually anything, SVI remains your answer.



Rolling Right Along

Several years ago, SVI had its subsidiary Manitowoc Lifts and Mfg. make a substantial investment in tooling and fixtures to make this rolling jack available to SVI distributors. At the time, it was unknown how successful the investment would be.

It turned out to be a good move because many SVI distributors have taken advantage of this product and found it an ideal jack for both new and replacement unit sales. This rolling jack is Made in America right in our building by MLM for SVI distributors. The staff at MLM enjoys serving you and asked us to do another feature in The Twin Post so other SVI distributors can start taking advantage of this jack when future needs arise. Put the MLM staff to work for you today and order some rolling jacks.



800-321-8173



Get Jacked! with Opportunity



SVI's subsidiary, Manitowoc Lifts and Mfg., LLC produces the exclusive NO-JACK for Worksafe USA, Inc. SVI is sharing this information with you because many of your existing customers operate tow trucks equipped with Jerr-Dan or other similar tow equipment. This is an excellent opportunity for you to increase sales with those customers of yours that provide full-service tow and roadside assistance operations.

The NO-JACK is an ideal time saver for those tow operators that will go out in the field for flat tire changes. Instead of the tow operators having to drag a floor jack off the truck they simply install the NO-JACK directly on the stingers of the tow equipment and use it to raise the car for a quick and easy tire change. This compact all-in-one design is easy to store and requires zero setup time. There are many other benefits as well. To explore the opportunity to become a NO-JACK dealer contact Worksafe USA, Inc. at 217-487-7045 and tell them SVI sent you.



Worksafe USA, Inc. also supplies its patented DUMP-LOK and CAB-LOK to prevent dump bed and cab over crushing injuries and deaths. Look them up online at www.worksafeusa.com. Worksafe products are Made in the USA and SVI and Manitowoc Lifts and Mfg are proud suppliers and supporters of Worksafe USA, Inc. and their efforts to increase safety during vehicle and truck dump bed service applications.

In-Ground Lifts—Nothing Safer and Nothing Lasts Longer



Ray's Tire in President Reagan's boyhood home town owns and operates this lift everyday. While this is an oldie, it still works basically just like the day it was new. This lift has been in service so long that cost of ownership is probably less than a penny a day. When this lift needs a new seal, valve or a sleeve and adapter assembly, SVI has the parts. Keeping older American ingenuity in service is a call-to-duty that SVI hears everyday.

Someday, perhaps maybe we will find a surface mount two-post lift that can boast the same longevity claim that this lift continues to enjoy, but we doubt it. Like the lifts SVI builds, this lift was made in the days-gone-by era of built-to-last. When your customers are ready for built-to-last lifts again, you can always turn to SVI. We will even build this very lift for you if you want. Why not—it's still a free country afterall. The point is when it comes to automotive lifts they are the one thing that at a minimum should still be built-to-last.

SVI equals last-a-lifetime lift solutions.

**What is the
Make and Model
of this Lift?**



While not recommended, what are these also commonly known as in the lift industry?



New for Globe Lifts

Globe Lift Lock Upgrade Top Choice Among True Lift Repair Professionals

The most innovative OEM in the automotive lift industry recently engineered another safety solution to satisfy OSHA inspectors and further protect lift operators. SVI's unique commitment to auto lift safety and creation of new products keeps distributors ahead of the changing marketplace.

Every owner/operator of a Globe side-by-side in-ground lift, whether it was made last year or decades ago, can easily upgrade their lift to not only meet, but EXCEED current ANSI/ALI Standards. This automatic locking equalizer bracket locks in every position throughout the stroke of the lift. The current standard calls for a lock position every six inches and existing Globe Lifts are either manual locking

or auto locking with generally only two lock positions. SVI's design dream team and engineers came up with an excellent product solution for SVI distributors and the owners of Globe Lifts. This means every single side-by-side Globe lift can easily conform to OSHA inspector scrutiny with SVI's Exclusive automatic locking system.

This remains a must-have stock item for your service trucks and installation is simple. You can reuse the existing shaft, pinion gears, keys and rack bars. The BH-9400K auto-locking bracket kit is universal and can be installed on all Globe side-by-side lifts. Operation is simple; the lift operator pulls up on the release when it is time to lower the lift. Once the lift is lowered, the lock mechanism is reset automatically for the next lifting cycle. The lock pawl is always in the ready position and immediately engages the instant the lift begins descent, stopping downward travel.

This innovative locking system is also available in kit form complete with rack bars, pinion gears, etc. Be a hero and upgrade existing Globe Lifts today.

Don't forget about our DUSL seal and bearing upgrade kits for Globe Lifts as well. SVI distributors have the products available to make every Globe Lift like new again and fully exceed industry standards—**SVI is your Answer!**

Say "Hello, Dolly!"

SVI now supplies a full-line of SVRide™ Dollies that are available in different widths and capacities. There is also a full compliment of optional accessories such as a tire stack attachment. A convenient to use wall mount hanger bracket for easy storage of the Auto Dollies when not in use is also available.

These Dollies are great for shops, car collectors, race teams, body shops, boat and RV dealers, small aircraft and helicopter hangers or just about anywhere you will find motorized vehicles or craft.

Made in the USA, like so many other products available from SVI, they feature a low profile, powder coat finish and polyurethane castors that won't mar floors. The 3 sizes available include 8", 12" and 16" widths to accommodate different tire sizes. The standard capacity is 1500 lbs. each and heavy duty models of 2500 lbs. and more are available.

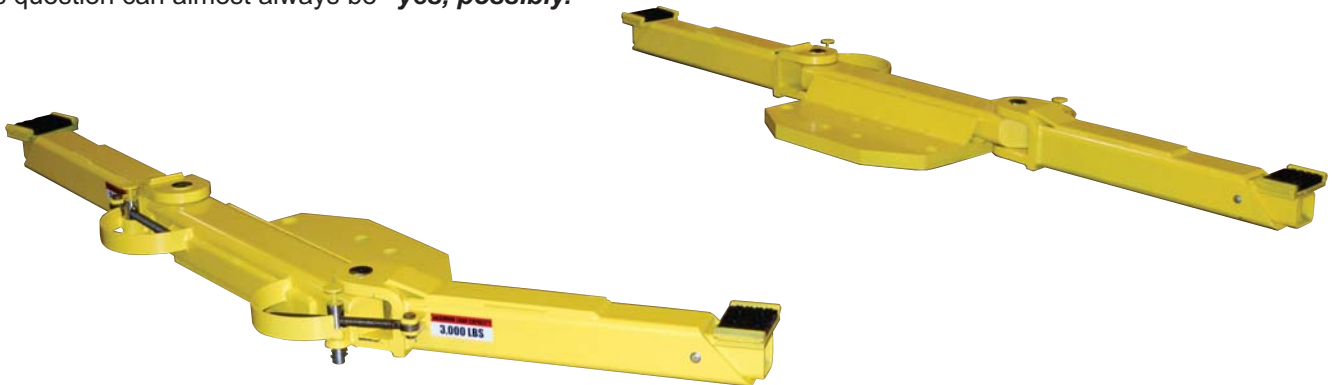
Contact SVI for more details. A complete catalog and price list will be available soon. Increase your sales opportunities with SVI SVRide™ Dollies and accessories.



Since 1977

FS-28 12K SUPERstructure turns a great Globe lift into the **GREATEST GLOBE LIFT.**

How many times has a customer said, *"I wish my lift could lift more"*? It happens all the time and rarely, if ever, is there a realistic, reasonable, or safe solution. In the case of Globe and other in-ground side-by-side lifts the answer to this question can almost always be *"yes, possibly."*



SVI engineers have developed several such solutions, one being for the ever popular Globe FSR-28 models and now one for the FS-28 wide drive through Globe lift model. Both of these lifts are still produced to this day by the OE, SVI, and sold under the Globe product brand. These 12,000 lb. capacity SUPERstructures can be easily interchanged on an existing Globe lift in the field to provide more lifting capacity for those that encounter a lot of F350's and 3500's.

The SUPERstructure pictured is for the wide drive-through and incorporates automatic arm restraints and all the other design criteria and safety factors required in our modern era as defined by sound design disciplines and industry standards.

To explore ungrading an existing in-ground lift's lifting capacity, contact your favorite SVI representative today.

Adapter for Wheeltronic



BH-7793-56



SVI recommends:
BH-7796-10B

SVI improved on the original manufacturer's design of BH-7793-56 (consisting of BH-7796-10NS adapter using the BH-7805-168 rubber pad) which does not last because of its design. The shorter pin length on the -10NS version caused the adapter to ride directly on the arm.

SVI improved the whole setup and made the pin 1/2" longer so the adapter would not ride on the arm. SVI also adapted to use a heavier duty BH-7101-00 rubber pad on top that would last longer and not tear.



BH-7474-78
Rubber Pad for BendPak
(sold individually)

It's No Hockey Puck

Instead this is a new rubber pad for use on newer Bend Pak lifts, XPR-Series. SVI just recently completed tooling to make this 5" diameter pad available to distributors at good old fashioned SVI style pricing.

These pads are ideal for high volume shops. The pad is thicker to provide a longer lifespan. They are made here in North America and one of the many always in stock items at SVI.

SVI is your one-stop shop.

800-321-8173

Guess what, the boy is back!

While virtually identical to the once-available Gasboy model 73, SVI is pleased to introduce its new model **WD73**. This consumer series pump is now available and assembled in our DeKalb, Illinois plant. Everyone who has enjoyed the lifespan longevity and serviceability of the former Gasboy consumer 70 series pumps will experience the same results with this pump. The **specifications are identical** and the pump is priced right.

Put the boy back to work and order some WD73 pumps today. They come complete as pictured with the nozzle and fuel line. We also offer the ever-useful Install-A-Socket. There are two versions of this pump available, one for diesel and one for unleaded. Contact your favorite SVI representative to place your orders.



Call today: 800-321-8173

Watch for SVI's specials and newsletters via e-mail. Call or sign up online www.sviinternational.com

All names, numbers, symbols and descriptions are used for reference purposes only. It is not implied that any part listed is the product of these manufacturers; however, some parts may be the actual product of these manufacturers. entire contents copyright © 2014, SVI International, Inc.

Products on demand.

THE
Twin Post
SVI International, Inc.
155 Harvestore Drive
DeKalb, IL 60115

