



# The Twin Post

Update for the SVI Line of  
Automotive Service Equipment Repair Parts - November 2008



Newsletter by SVI and  
Trying Time Publications

- Baltimore
- Chicago
- Los Angeles

## This Issue:

**Heavy Duty Customs**

**Lube Buckets**

**Wheel Service Products**

**Alignment Turnplates**

**Tire Changer Parts**

**Aqua Out**

**New Website**

**Solenoid Valves**

**Time Delay Relay**

**Lead Wire Seals**

**Exhaust System Products**

**Parts for W-K**

**Shining Stars**

**Heavy Duty Rubber Pads for Challenger**

**Forklift Proof**

**Air2L™**

**Be a Patriot**

**Since 1977**

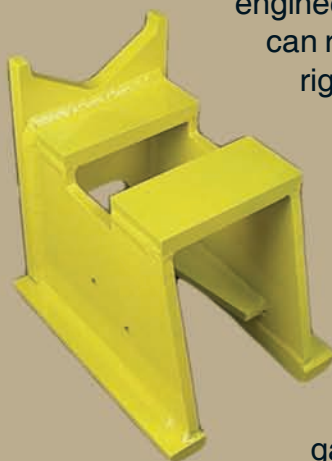
**Solving the changing application requirements in the Lift Industry!**

## Heavy Duty Customs



Every year new lifting point challenges confront managers of fleet service operations all over the country. So far 2008 has been no exception and SVI has met every special adapter need distributors encounter. Often times as new models of trucks and buses are introduced by the vehicle manufacturers, existing heavy duty lift adapters don't match up with newly designed undercarriages.

To keep heavy duty lift users safe and able to correctly lift vehicles SVI and its engineers take every custom adapter request very seriously. This means special attention is given to application needs, material strength requirements, and safety factors. For these reasons, it is very important that you avoid letting your heavy duty lift customers cobble up their own adapters. Instead put SVI's engineering expertise to work for your customers so every one can rest assured that their SVI made special adapters are right for the job. Bring us your custom adapter requirements and for no extra charge SVI engineers will design the proper strength that you need.



The adapters pictured above are a variation of a Rotary design but made both taller than standard and intended to fit a Weaver saddle. These adapters properly solved clearance issues the shop was encountering.

The adapter to the left was built for a municipal garage in Peoria, Illinois that recently purchased a new Sterling tandem axle truck that would be used in the winter to plow and spread salt. This adapter allows the shop to lift the Sterling truck safely between the tandem axles rather than just by one of the two axles. It was also designed to still function as axle engaging for their other single axle vehicles. This adapter solved the problem in Peoria and handles all their vehicles so adapter switches never need to be made.

For all your custom adapter needs -- **SVI is their answer.**

## Tire changer machine -- Lube Buckets



Making big investments in highly specialized tooling over the years has allowed us to supply SVI distributors with some of the best pricing available. This is also true when it came to spending the money to make lube buckets available. No one can beat our pricing on the lube buckets and that is why we keep so many of them in stock. In addition to the lube buckets we also have tons of tire swabs on our shelves.

BW-1662-59  
BW-1665-72  
BW-2104-91  
BW-2503-66

Straight neck lube bucket  
Angled neck lube bucket  
11-1/2" long Tire Swab  
16" long Tire Swab

## Wheel Service Products

**Directly** due to your support and efforts, SVI's selection of wheel service related products is expanding fast. In less than two years we have added many new products to this segment of our product line. We vow to continue the rapid expansion and work toward being the most full rounded supplier to the industry we serve and protect. No we are not cops, just a dedicated group of hard working individuals that are dedicated to you. Call us today to get your wheel service products on order with SVI.



## Alignment Turnplates

If you prefer stainless steel or painted carbon steel turnplates, SVI has the best pricing around on either style. We always have the turnplates in stock ready for immediate shipment to you or your customer. Don't forget we also stock tons of different sizes of replacement slip-plate and turnplate balls. For low prices and a large selection of choices contact SVI because one call in fact does do it all.

**JUST CALL  
800-321-8173**



### Tire Changer Parts

TC1000

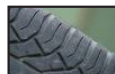
SVI International, Inc. - Tire Changer Parts



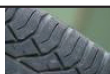
September 2008



Mount/Demount Heads	Page 2
Cylinder Seal Kits	Page 3
Air Hoses	Page 4
Tire Lube Supplies	Page 4
Air Gauges	Page 4
Bead & Combo Tools	Page 5
Motors & Kits	Page 5
Belts, Tubing	Page 6
Miscellaneous	Page 7



SVI International, Inc.  
•Baltimore • Chicago • Los Angeles  
101 W Illinois Ave., Aurora, IL 60506  
Ph (800) 321-8173 Fax (800) 899-1784



Entire Contents Copyright © SVI International, Inc. 2008

## New Book

From demount/mount heads to bead breaker air cylinder repair kits and lube buckets to air pressure gauges we have you covered.

**SVI = Low cost solutions.**

## For cassette style in-ground lifts:

### cassette/pit lift Aqua-out

an SVI patent pending product

One nice shop. . .



Prevent potential out of sight, out of mind problems. When was the last time you actually looked below the surface?

The cassette style lifts in this shop were only recently installed. Every time these lifts are raised fresh, moist air is drawn in to the containment tub. Down below the cool surroundings cause moisture in the air to condense. This condensed moisture (water) accumulates and starts its almost termite like assault on the lift. Up until now there has been no simple solution to automatic water removal. **SVI is your answer!**

There really is something you can actually do to reduce the water level automatically. Install Aqua-out. . .

Trouble free? Or, is something lurking below.

- Water
- Rust
- Corrosion

#### Aqua-out

For use on cassette and pit style in-ground lifts.

#### Get the water out now!

#### the Aqua-out system

SVI is your answer!

Remove the center cover and take a look for yourself! What do you see?

**Aqua-out**

- Protects your investment...
- Removes water.
- Works automatically.
- Air operated.
- Eliminates routine periodic pump out maintenance.
- An SVI lift industry solution.

The Aqua-out automatic water removal system installs in about two hours and gets the water out of your lift every time the lift is lowered or the air valve is actuated. Aqua-out incorporates a moisture filter/regulator, pump and an in-line filter that are all specially designed for the rigors of service your application demands.

Prolong the life of your investment and don't put this installation off another day. Contact your local SVI distributor to schedule an installation. This low cost solution is worth every penny because you spent a lot of dollars to buy these lifts, now protect the investment.

This corroded air lock cylinder was recently removed from a lift. Could other parts be corroding as well?

**SVI International, Inc. AUTO LIFT SOLUTIONS**  
BALTIMORE • CHICAGO • LOS ANGELES  
Main Office: 101 W. Illinois Ave • Aurora, Illinois 60506  
800-321-8173 • Fax 800-899-1784  
Entire Contents Copyright © SVI International, Inc. 2005



## Real Problem Real Solution

SVI's exclusive patent pending "Aqua Out" system is the water removal system of choice for top lift industry professionals.

Nothing works harder to automatically prevent unwanted water build-up in cassette style in-ground lifts like an "Aqua-Out".

Once installed the "Aqua-Out" system automatically removes water each time the lift is lowered to help prevent internal corrosion issues as the result of condensation. This means the investment lift owners have made in their cassette style lifts can be protected and last longer.



If corroding steel didn't weaken they wouldn't constantly be painting the **Golden Gate Bridge** to protect it from corrosion.

**Think about it. — Get the water out now before it is too late!**

**"Out of sight, out of mind corrosion may be going on right below a shop technician's feet while 4,000 lbs. of a four door sedan are right above his head."**

click here:

New SVI website is live: navigate to it - - [www.sviinternational.com](http://www.sviinternational.com)

Since firing up our first website back in the 1990's SVI has been dedicated to continuing to expand our on-line presence. It is very important to us to let owners of lifts learn that a company like ours exists. They are pleased to learn that we can and do supply lift repair parts for old and new lifts alike.

Recently American Airlines found us after everyone they originally contacted told them that Weaver was out of business and no parts were available. Of course, we all know this is the farthest thing from the truth. Their lift is working safely again.

An owner of a Globe lift made in the 1930's needed new seals and no one would help him. That was until he found SVI when conducting a web search.

professional engineering

BEST prices

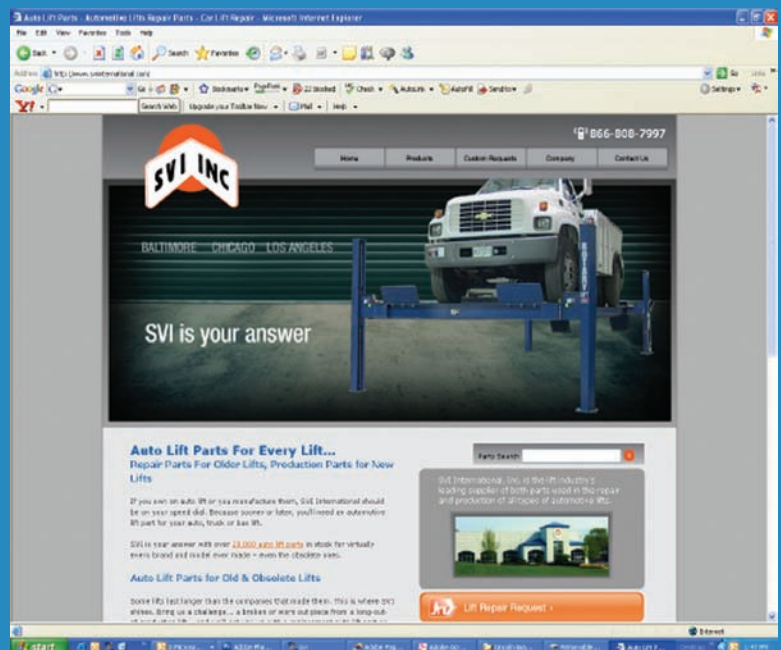
knowledgable

respected

ethical

properly INSURED

SVI Direct Fit brand products are the answer.





# Solenoid Valves

## Product Delivery Control Solutions

SVI supplies an extensive line of solenoid valves that are suited for a wide variety of applications. Each valve can be configured to your exact requirements as to coil characteristics, body material and spring material. Seals are available in Buna N, Neoprene, EPDM, Viton and Teflon depending on how the solenoid valve will be used. For example, you would choose Viton if you are working with benzene, naphta, aromatics, hot gases, high vacuum or diesel oil.

Contact SVI with your application for great pricing and fast delivery. If you need a copy of our very detailed catalog let us know and will send it to you.

**Sample applications:**

Car washes	Automotive service
Petroleum Products	Quick Lubes
Industrial Plants	Appliances
Heating Systems	Spray Systems



## Field Selectable time Delay relay for leak detectors. . . .

The BP-4170-FSD helps eliminate thermal line contraction in fuel pumps where temperature changes fluctuate. In this environment standard leak detectors, which delay product flow for a couple of seconds each time the pump is activated, may experience some problems. When the air temperature is cooler than the temperature inside the tank, diaphragm style leak detectors do not always stay primed. This means pressure is not maintained in the lines from the submersible pump. Consequently, a couple second delay is not long enough for the fuel to return and the leak detector misinterprets low pressure as a leak and slows product flow. The BP-4170-FSD further delays product flow and solves most of this problem.

The BP-4170-FSD is a most user friendly product and allows the service technician field selectable delay choices that will properly meet the application needs. At only 1-1/4" x 1-1/4" x 5/8" in size it will fit in the tightest of junction boxes. The feature that most stands out is the in the field adjustability. Each module contains a timing switch with an indicator and ten positions. The BP-4170-FSD is adjustable from a 1/2 second delay on up to a 9-1/2 second delay. Select the zero position for a 1/2 second delay. Each subsequent position increases the delay by one second. The switch is easily visible to adjust with no guess work required. The BP-4170-FSD allows you the ability to dial-in the exact amount of delay required for smooth pumping operation.



SVI has been proudly an associate member of the Petroleum Equipment Institute non-stop since 1977.

For over 30 years we have been supplying PEI members with gaskets used to rebuild meters, meter lip seals, curb pump hose clamps, lead wire meter seals and a myriad of other products.

In the late 1980's we also supplied hundreds of spill containment manholes. While spill containment is no longer part of our product focus, recently introduced solenoid valves are certainly priced right from SVI.

Contact SVI with all of your solenoid valve needs to receive great prices. We also want your suggestions for other PEI related products we should make available.

## Lead and wire meter seals, crimpers and customizable dies





The Positive ID™ is exactly what you need when you want a tailpipe adapter to easily fit and stay put. Simply insert the adapter into the tailpipe until it stops and then give it a twist to the right. It is now so secure you could literally put the car in neutral and pull it by the length of exhaust hose connected to the tailpipe. A simple twist to the left and you have removed it just as easily as it was installed.

The Positive ID™ Adapter exclusively available from SVI is the only tailpipe adapter that engages the inside of the tailpipe. The Positive ID™ works where others can't. Also available for Telescopic Systems and can be easily added to previous systems supplied by Garage Products or others.

Works on recessed tailpipes

Allows cool air draw.

Make a Positive ID™

Won't fall off or scratch paint or chrome.

## Positive ID™ Tailpipe Adapters

US and Foreign Patents Pending  
Registered Trademark



# Exhaust System Products



## Blazing Fast Saddles now available with air flow damper

It certainly doesn't take long for any part of an SVI product segment to increase in size with more customer driven options. The ink on our new

brochure hadn't even dried before these labor saving exhaust system saddles had a new optional feature added. Now you can purchase this time saving product with an air flow damper if you would like.

Since this product is so new many of you have yet to experience the real benefits enjoyed by using Blazing Fast Saddles. These saddles are safer to install and there is no drilling upside down with hot chips falling in your face. See our brochure for more benefits.

**To save money on Exhaust System Products contact SVI for your special pricing. To keep your costs down there is only one answer - SVI.**

## Telescopic Overhead Systems

SVI's line of telescopic overhead systems has been very well received. We have expanded your range of options with four different styles of tailpipe adapters you can choose from. We also offer extended length versions for taller ceiling heights.



SVI exhaust removal products are used everywhere vehicle service is performed to keep automotive service technicians safe from harmful levels of carbon monoxide (CO).

Baltimore • Chicago • Los Angeles



# Jacks kept-a-rollin' W-K all day long

parts for

rollers for WK-25  
SVI# BH-7773-02  
Ref OE# 25-102

Engineering never rests and worn out rolling jack components are keeping SVI busy at work for you.



One of the most common items on any rolling jack to fail are the roller assemblies. These roller assemblies freeze up from lack of maintenance and corrosive elements. This makes positioning of any rolling jack very difficult and can result in workplace injury to automotive service technicians. SVI wants to help you keep proper positioning of rolling jacks safe and easy to perform. We also want to help you keep everyone's repair costs down with sensibly priced replacement parts.

To save money on repair parts for W-K Industries rolling jack products put SVI to work. Right now SVI is expanding its product offering for rolling jacks across the board. This means for all makes and models. To keep rolling jacks rolling - it's SVI.

rollers for WK-6  
SVI# BH-7773-01  
Ref OE# 6-102

## Shining Star. . . .

**Lift Industry Repair Product of the Year wins praise from upstate New York lift owner.**

"Adjust-To-Fit" replacement upper bearing kits exclusively available from SVI are accurately solving plunger rock issues on many in-ground lifts.

Recently SVI worked closely with Brewster Schools in Brewster, New York and their SVI distributor to solve plunger rock concerns with two of their 8 year old Challenger in-ground fore and aft lift models. Management at the School Bus Garage was concerned with amount of play in the plungers and tried to find a solution to their problem. It seemed almost everywhere they turned for help they hit a brick wall. That was until they found out that SVI had a simple and affordable solution to solve the problem. With help from their nearby SVI distributor and SVI's "Adjust-To-Fit" upper bearing kits their lifts were saved. The comment was made that they **fit like a glove** and instantly solved the problem.

ATF's are available for the following lift makes: Challenger, Globe, Rotary, SVI Power Post and soon to be for Western. Call for more details.



## Heavy Duty Rubber Arm Pads available for Challenger CL models

In addition to our full line of height extension choices and standard style rubber arm pads for Challenger CL models new heavy duty arm pads are in stock now. These pads are produced using the same durable material we use for our heavy versions for Forward and old style Challenger pads.

BH-7232-01HD  
BH-7232-01HD-4

Rubber Arm Pad - Heavy Duty Style  
Rubber Arm Kit - HD (set of 4)



# Forklift proof. . .

A recent production run of high strength specially compounded plastic demount and mount heads was being moved from one section of the SVI warehouse to another. During their trip on the forklift a couple spilled out and were run over by a 5,000 lb. capacity forklift. To our amazement, they were completely unharmed. When you need high strength duckheads that hold up to the rigors of everyday use, SVI is your answer.



SVI# BW-1010-08

SVI P/N	Air2L™ Description
AS-2301-01	1/4" & 1/4" NPT Inlets
AS-2301-02	1/4" & 3/8" NPT Inlets
AS-2301-03	3/8" & 3/8" NPT Inlets

Air2L™ kits are supplied without coupler fittings. See SVI Air System Products catalog for all the various coupler fittings.

Introducing  
**Air2L™**  
pronounced - Air Tool

The patented Air2L™ is truly a time-saving product that is a must have for everyone who works with air tools.

How many times have you had to make a coupler plug change in the field? Reduce your chances and own an Air2L™. Always be ready to go when you encounter one of the two different popular styles of coupler plugs commonly used in your industry.

**How does it work?** Simple, connect up to the plug you need and there is an internal ball that automatically moves to block the coupler opening not in use.

## Benefits

Minimizes frequent threading and unthreading that can result in stripping of the tool's air inlet over time.

Helps to keep foreign material such as thread sealant tape, dirt, etc. from entering the tool.

Time savings; various automotive shops often use one style of coupler over another. Users can have the more standard coupler as their primary fitting in one port and a less common fitting in the second port.

## Other Markets

High Flow vs. Standard Flow. Many carpentry contractors utilize 1/4" fittings on finish and brad nailers and 3/8" fittings on roofing framing nailers. This causes the need for them to utilize cumbersome in-line adapters or removal of fittings to facilitate interchange of tools on a jobsite.

Rental Industry. In the rental industry virtually all companies remove the air inlet fittings owing to the fact that they do not know what type of fittings their customers utilize. Tool damage and decreased life cycles are extremely expensive to the rental industry as a result of this practice. Send your sales people on a mission.





# The Balls



## Repair Products for

**Graco** lube equipment.

2008 Chicago, Illinois

In February of 2008 SVI introduced its first full scale repair kit for Graco lubrication equipment. The announcement was made in an SVI New Product Notice and faxed and emailed to top SVI distributors.



# The Kits

Since then, the introduction and SVI's rapid growth of repair kits for Graco lubrication equipment has put SVI on the **Global** map. While US made automotive lifts are mostly a domestic product, US made lubrication equipment can be found in all four corners of the World. This simple fact has greatly opened up SVI's markets both domestically and abroad. SVI sales may account for just a small portion of this Country's **GDP** (gross domestic product) but it's nice to know we are a growing portion and more so a US exporter than ever before. One of our top expectations is to contribute in helping the **United States** to reduce the existing trade deficits.

We need your help to do this. How can you help? The best way to help is to purchase your repair kits for Graco lubrication equipment directly from SVI. Another way to help is to tell everyone you know who repairs Graco products about SVI's fantastic new product line. Together we can reduce the trade deficit and bring **US dollars** back home. Be a Patriot.

# The World

**Keeping the industry safe one lock at a time.**

