

ASYMMETRICAL STYLE LIFT, SWING ARMS FULLY EXTENDED

LIFT INFORMATION:

LIFT MANUFACTURER _____

LIFT MODEL (INCLUDE FULL
MODEL #) _____

LIFT CAPACITY _____

DATE OF MANUFACTURE _____

****NOTE:** FOR LIFTS WITH
DISTANCE BETWEEN ARMS
109" OR GREATER, OR
FOR APPLICATIONS IN
WHICH VEHICLE WEIGHT
EXCEEDS SPECIFIED
CAPACITY FOR A
STANDARD TURF TRAY, A
HEAVY DUTY TRAY WILL
BE QUOTED.

FOR ALL EQUIPMENT INTENDED FOR LIFTING:

SHORTEST WHEELBASE MEASUREMENT _____

LONGEST WHEELBASE MEASUREMENT _____

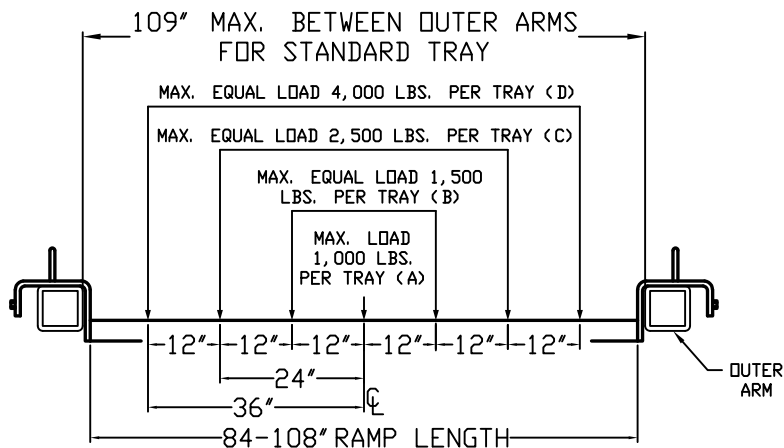
**HEAVIEST EQUIPMENT INTENDED FOR LIFTING:

EQUIPMENT MANUFACTURER _____

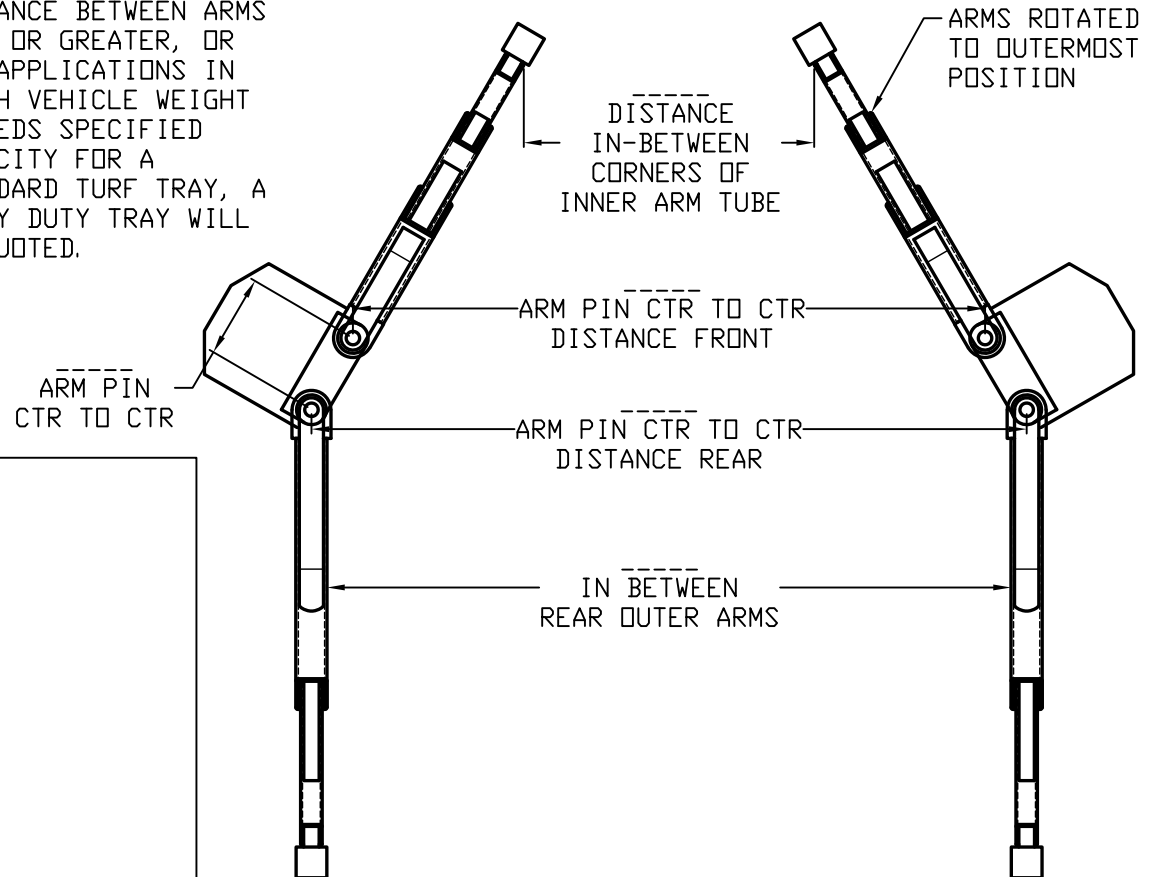
EQUIPMENT MODEL _____

EQUIPMENT WHEEL TRACK FRONT _____ REAR _____

EQUIPMENT WEIGHT (IF KNOWN) _____



STANDARD TURF TRAY CAPACITY DIAGRAM



SVI INTERNATIONAL, INC.
155 HARVESTORE DRIVE
DEKALB, IL 60115
Automotive Service Equipment

TOLERANCE
UNLESS NOTED
OTHERWISE
ANGLE $\pm 1^\circ$
X.X $\pm .062$
X.XX $\pm .031$
X.XXX $\pm .015$
FRACTION $\pm .062$

SCALE: NONE
DATE: 11/15/18
DRAWN BY: AF
REF:

PART
NAME

TURF TRAY (ASYMMETRICAL)

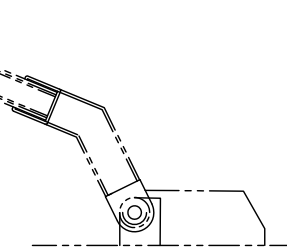
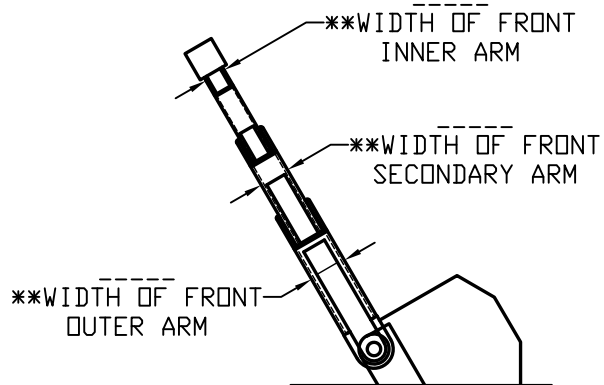
PART
No.

SHEET 1 OF 6

SHEET: 1 of 6

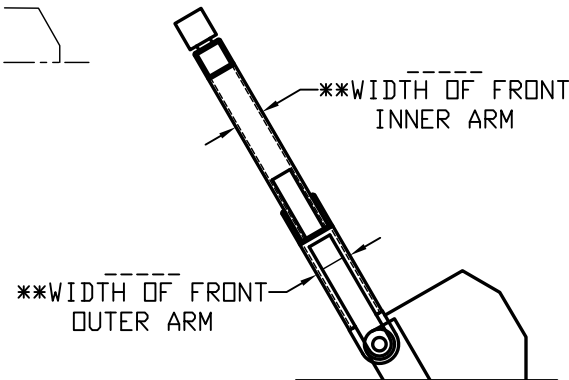
REV:

3-STAGE FRONT ARMS

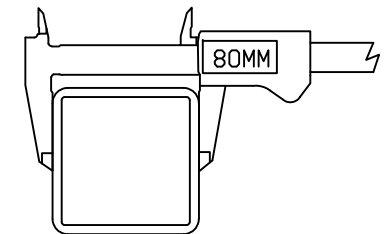
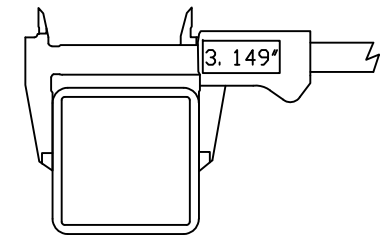


PLEASE CHECK
IF FRONT ARM
IS OFFSET
STYLE AS
SHOWN ABOVE

2-STAGE FRONT ARMS

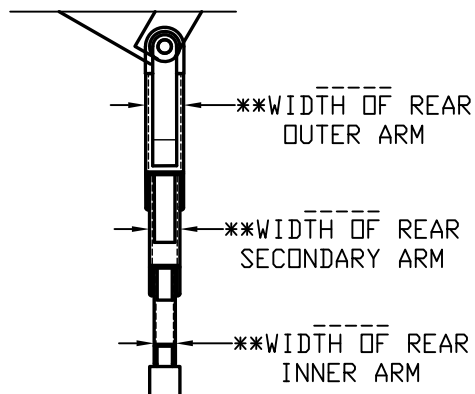


****NOTE:** WHEN
MEASURING TUBE
SIZE, IT IS
RECOMMENDED TO USE
A DIGITAL CALIPER
TO HELP DISTINGUISH
BETWEEN METRIC AND
INCH SIZES. EX:
3.149" = 80MM

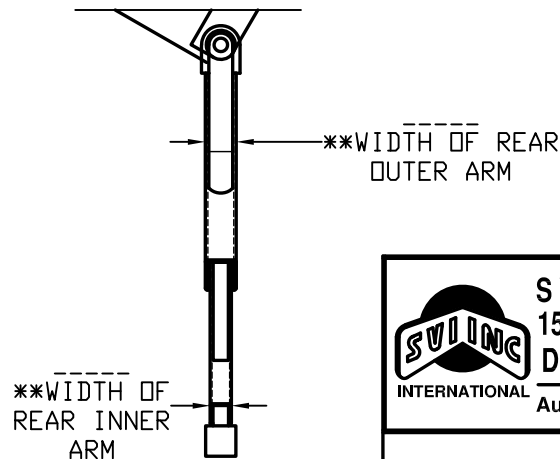


SELECT AND FILL OUT
WHICH ARM STYLES
PERTAIN TO YOUR LIFT

3-STAGE REAR ARMS



2-STAGE REAR ARMS



SVI INTERNATIONAL, INC.
155 HARVESTORE DRIVE
DEKALB, IL 60115
Automotive Service Equipment

TOLERANCE
UNLESS NOTED
OTHERWISE
ANGLE $\pm 1^\circ$
X.X $\pm .062$
X.XX $\pm .031$
X.XXX $\pm .015$
FRACTION $\pm .062$

SCALE: NONE

DATE: 11/15/18

DRAWN BY: AF

REF:

SHEET: 2 of 6

REV:

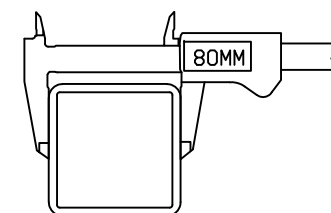
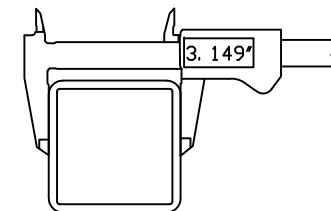
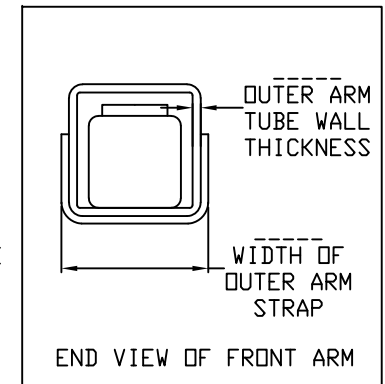
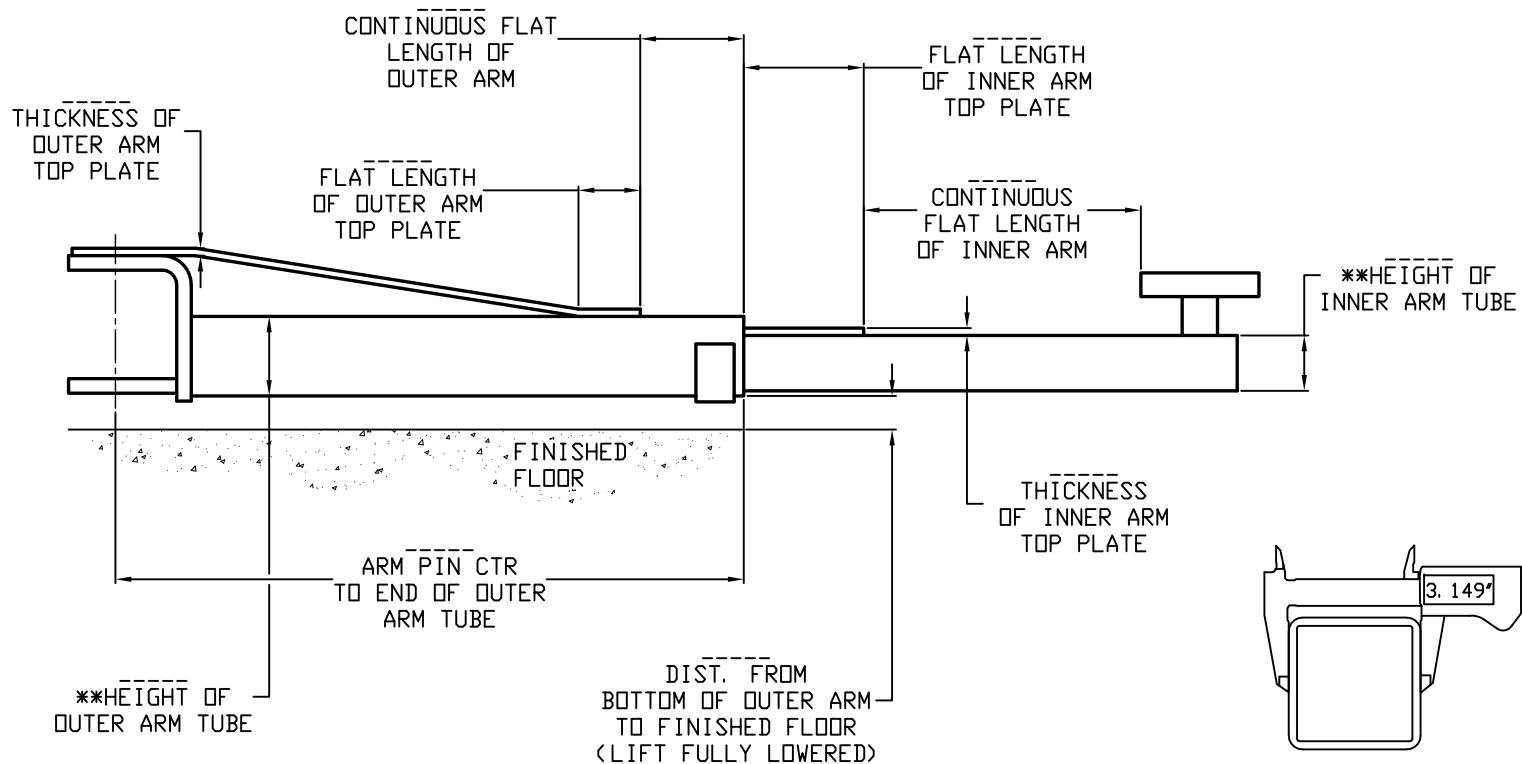
PART
NAME

TURF TRAY (ASYMMETRICAL)

PART
No.

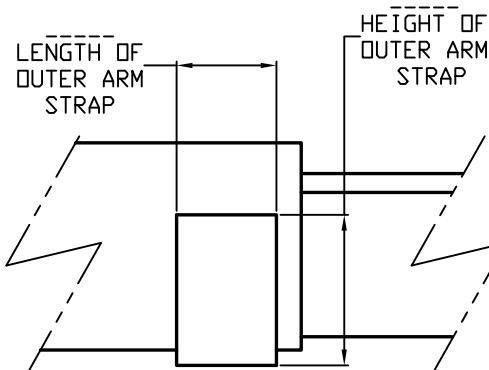
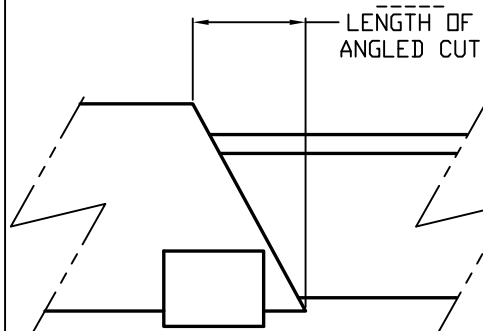
SHEET 2 OF 6

FRONT ARM DETAILS (2 STAGE) (INNER ARM FULLY EXTENDED)



****NOTE:** WHEN MEASURING TUBE SIZE, IT IS RECOMMENDED TO USE A DIGITAL CALIPER TO HELP DISTINGUISH BETWEEN METRIC AND INCH SIZES. EX: 3.149" = 80MM

IF OUTER ARM TUBE END IS CUT AT AN ANGLE



S V I INTERNATIONAL, INC.
 155 HARVESTORE DRIVE
 DEKALB, IL 60115
 Automotive Service Equipment

TOLERANCE
 UNLESS NOTED
 OTHERWISE
 ANGLE $\pm 1^\circ$
 X.X $\pm .062$
 X.XX $\pm .031$
 X.XXX $\pm .015$
 FRACTION $\pm .062$

SCALE: NONE
 DATE: 11/15/18
 DRAWN BY: AF
 REF:

PART
 NAME

TURF TRAY (2 STAGE)

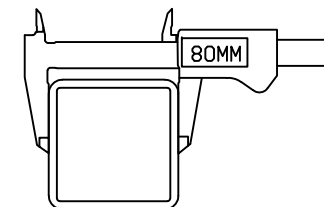
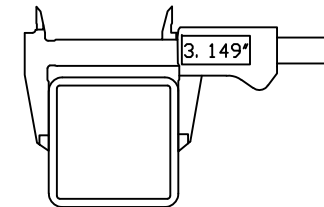
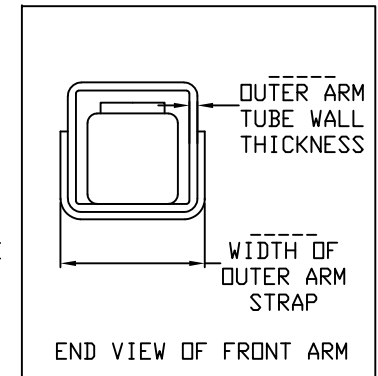
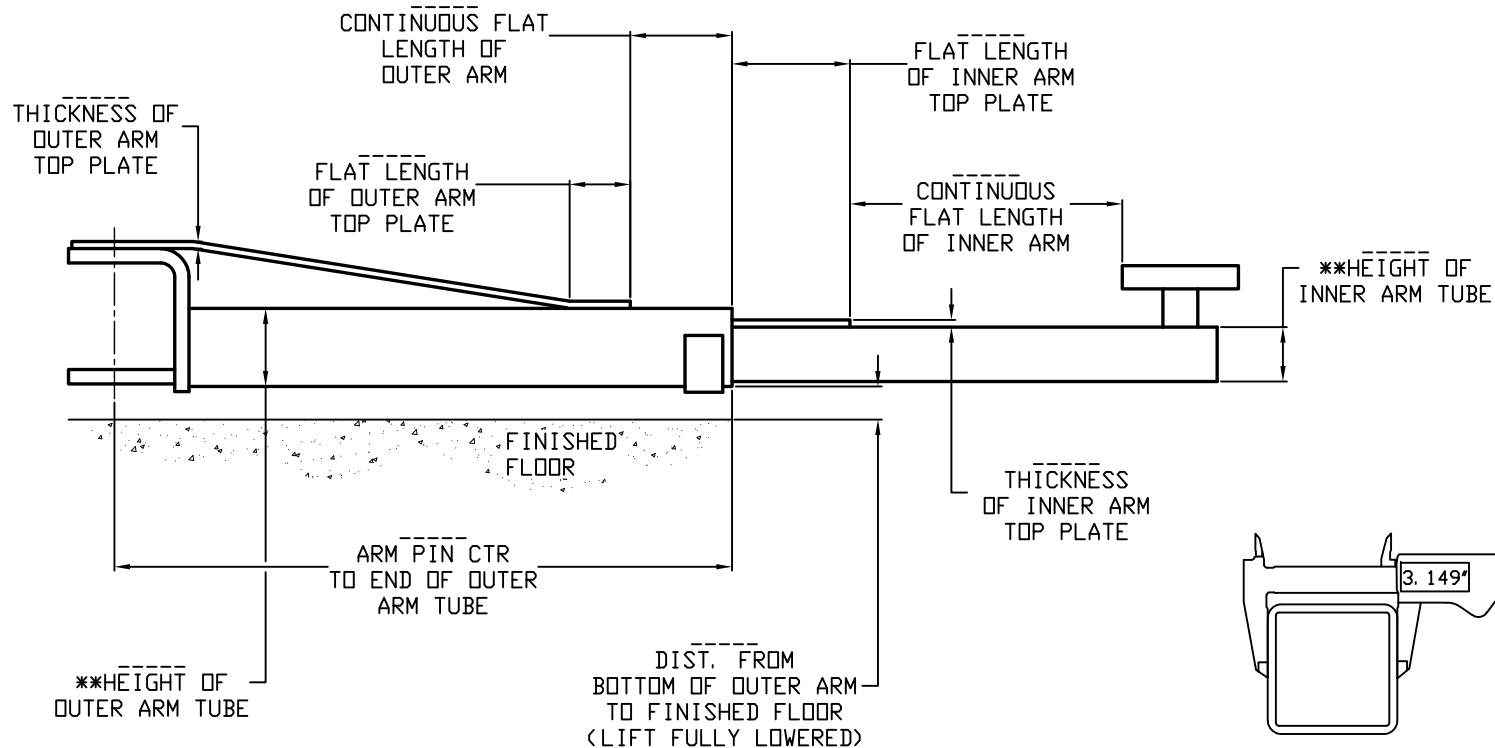
SHEET: 3 of 6

PART
 No.

SHEET 3 OF 6

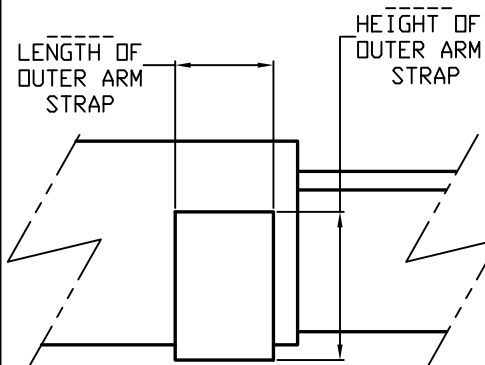
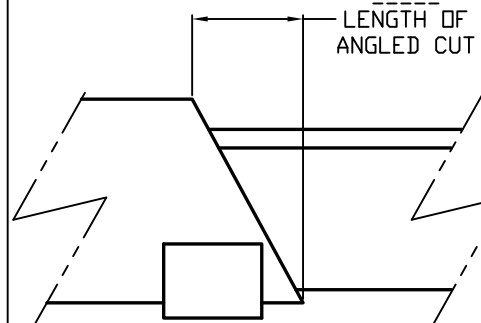
REV:

REAR ARM DETAILS (2 STAGE) (INNER ARM FULLY EXTENDED)



**NOTE: WHEN MEASURING TUBE SIZE, IT IS RECOMMENDED TO USE A DIGITAL CALIPER TO HELP DISTINGUISH BETWEEN METRIC AND INCH SIZES. EX: 3.149" = 80MM

IF OUTER ARM TUBE END IS CUT AT AN ANGLE



S V I INTERNATIONAL INC.
155 HARVESTORE DRIVE
DEKALB, IL 60115
 INTERNATIONAL Automotive Service Equipment

TOLERANCE
 UNLESS NOTED
 OTHERWISE
 ANGLE $\pm 1^\circ$
 X.X $\pm .062$
 X.XX $\pm .031$
 X.XXX $\pm .015$
 FRACTION $\pm .062$

REV.	BY	DATE
		SCALE: NONE
		DATE: 11/15/18
		DRAWN BY: AF
		REF:
		SHEET: 4 of 6
		REV:

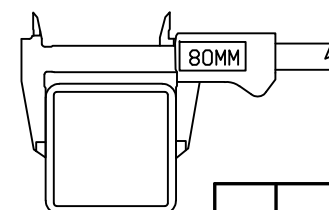
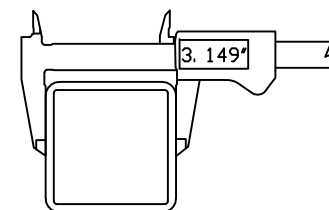
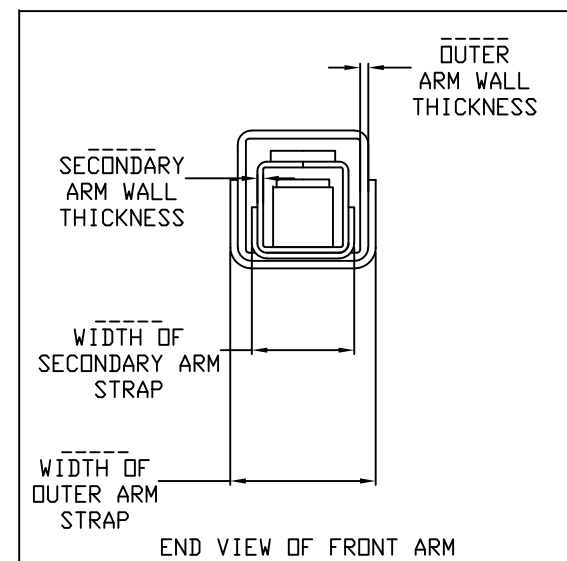
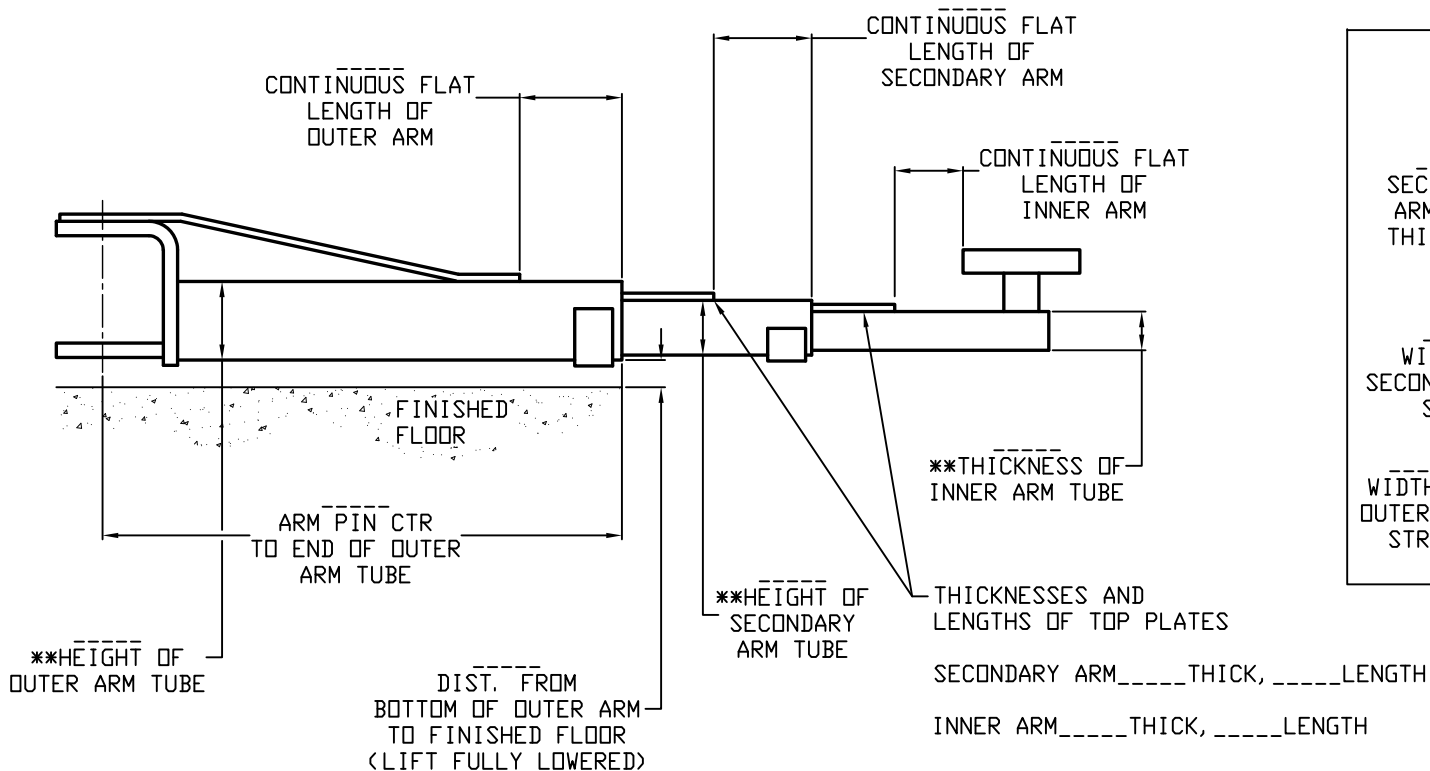
PART
 NAME

TURF TRAY (2 STAGE)

PART
 No.

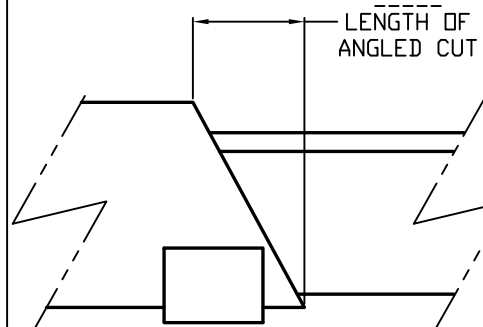
SHEET 4 OF 6

FRONT ARM DETAILS (3 STAGE) (INNER ARM FULLY EXTENDED)



**NOTE: WHEN MEASURING TUBE SIZE, IT IS RECOMMENDED TO USE A DIGITAL CALIPER TO HELP DISTINGUISH BETWEEN METRIC AND INCH SIZES. EX: 3.149" = 80MM

IF OUTER ARM TUBE END IS CUT AT AN ANGLE

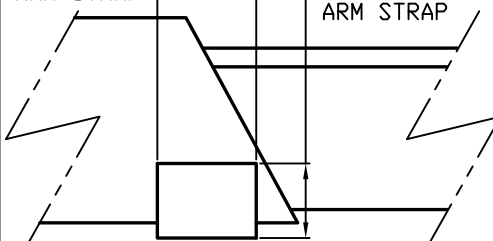


LENGTH OF OUTER ARM STRAP

HEIGHT OF OUTER ARM STRAP

LENGTH OF SECONDARY ARM STRAP

HEIGHT OF SECONDARY ARM STRAP



S V I INTERNATIONAL, INC.
 155 HARVESTORE DRIVE
 DEKALB, IL 60115
 INTERNATIONAL Automotive Service Equipment

TOLERANCE UNLESS NOTED OTHERWISE
 ANGLE $\pm 1^\circ$
 X.X $\pm .062$
 X.XX $\pm .031$
 X.XXX $\pm .015$
 FRACTION $\pm .062$

SCALE: NONE
 DATE: 11/15/18
 DRAWN BY: AF
 REF:

PART NAME

TURF TRAY (3 STAGE)

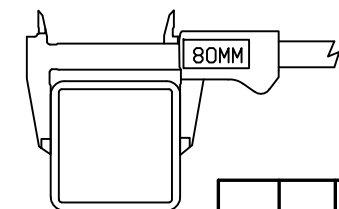
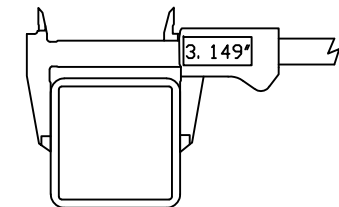
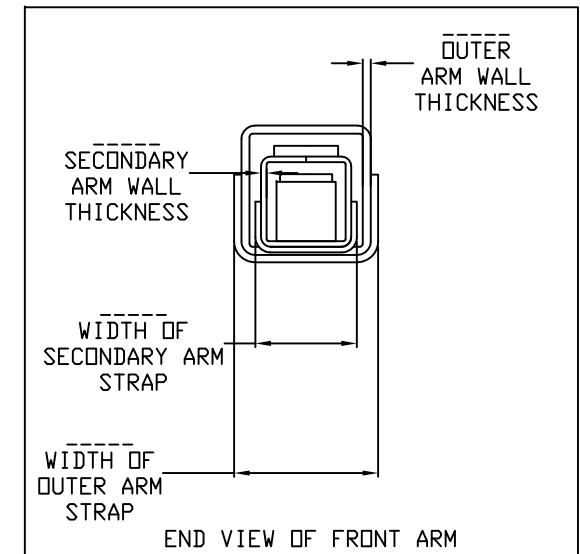
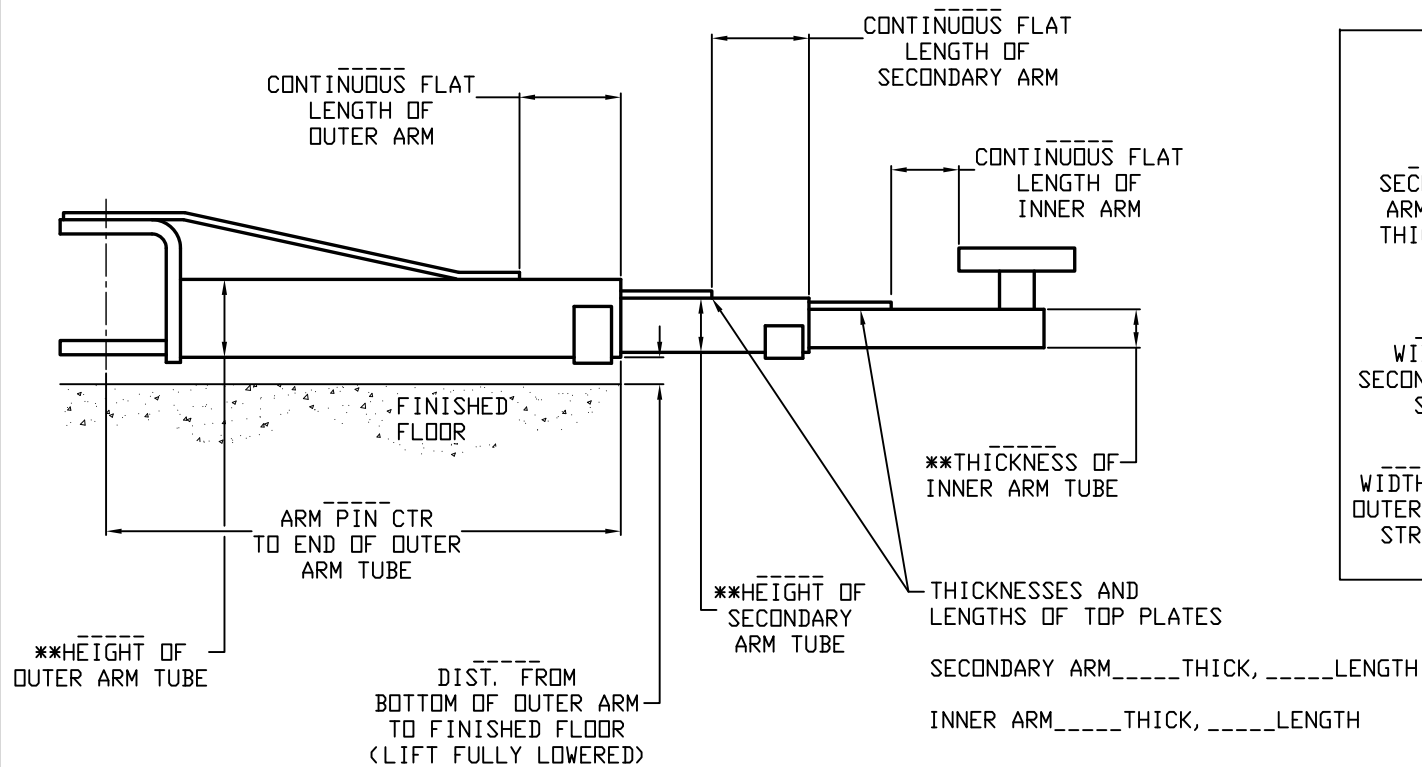
SHEET: 5 of 6

PART No.

SHEET 5 OF 6

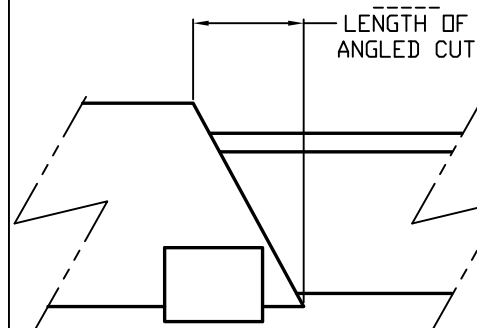
REV:

REAR ARM DETAILS (3 STAGE) (INNER ARM FULLY EXTENDED)



**NOTE: WHEN MEASURING TUBE SIZE, IT IS RECOMMENDED TO USE A DIGITAL CALIPER TO HELP DISTINGUISH BETWEEN METRIC AND INCH SIZES. EX: 3.149" = 80MM

IF OUTER ARM TUBE END IS CUT AT AN ANGLE



LENGTH OF OUTER ARM STRAP

HEIGHT OF OUTER ARM STRAP

LENGTH OF SECONDARY ARM STRAP

HEIGHT OF SECONDARY ARM STRAP

SVI INTERNATIONAL, INC.
 155 HARVESTORE DRIVE
 DEKALB, IL 60115
 Automotive Service Equipment

TOLERANCE UNLESS NOTED OTHERWISE
 ANGLE $\pm 1^\circ$
 X.X $\pm .062$
 X.XX $\pm .031$
 X.XXX $\pm .015$
 FRACTION $\pm .062$

SCALE: NONE

DATE: 11/15/18

DRAWN BY: AF

REF:

PART NAME

TURF TRAY (3 STAGE)

SHEET: 6 of 6

PART No.

SHEET 6 OF 6

REV: