

3 STAGE ARMS SYMMETRICAL STYLE LIFT, SWING ARMS FULLY EXTENDED

LIFT INFORMATION:

LIFT MANUFACTURER _____

LIFT MODEL (INCLUDE FULL
MODEL #) _____

LIFT CAPACITY _____

DATE OF MANUFACTURE _____

FOR ALL EQUIPMENT INTENDED FOR LIFTING:

SHORTEST WHEELBASE MEASUREMENT _____

LONGEST WHEELBASE MEASUREMENT _____

**HEAVIEST EQUIPMENT INTENDED FOR LIFTING:

EQUIPMENT MANUFACTURER _____

EQUIPMENT MODEL _____

EQUIPMENT WHEEL TRACK FRONT _____ REAR _____

EQUIPMENT WEIGHT (IF KNOWN) _____

****NOTE:** FOR LIFTS WITH
DISTANCE BETWEEN ARMS
109" OR GREATER, OR
FOR APPLICATIONS IN
WHICH VEHICLE WEIGHT
EXCEEDS SPECIFIED
CAPACITY FOR A
STANDARD TURF TRAY, A
HEAVY DUTY TRAY WILL
BE QUOTED.

ARM PIN
CTR TO CTR

FRONT ↑

WIDTH OF FRONT
SECONDARY ARM

IN BETWEEN FRONT
OUTER ARMS

NOTE:
ARMS MUST BE PARALLEL
WHILE TAKING THESE
MEASUREMENTS

IN BETWEEN REAR
OUTER ARMS

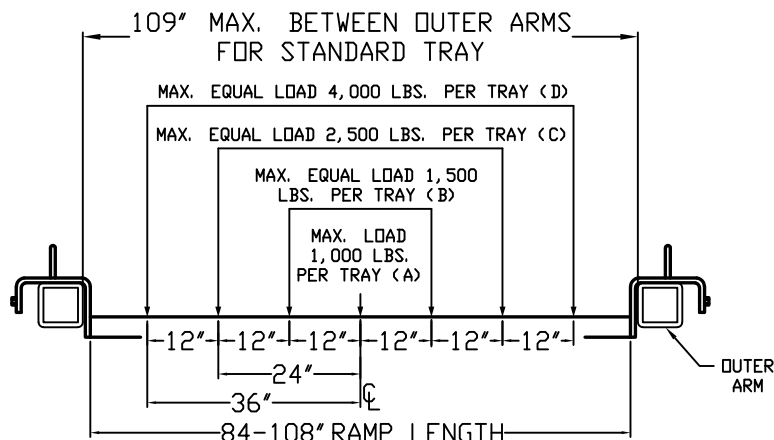
**WIDTH OF REAR
SECONDARY ARM

**WIDTH OF FRONT
INNER ARM

**WIDTH OF FRONT
OUTER ARM

**WIDTH OF REAR
OUTER ARM

**WIDTH OF REAR
INNER ARM



STANDARD TURF TRAY CAPACITY DIAGRAM



SVI INTERNATIONAL, INC.
155 HARVESTORE DRIVE
DEKALB, IL 60115
Automotive Service Equipment

TOLERANCE
UNLESS NOTED
OTHERWISE
ANGLE $\pm 1^\circ$
X.X $\pm .062$
X.XX $\pm .031$
X.XXX $\pm .015$
FRACTION $\pm .062$

SCALE: NONE

DATE: 11/15/18

DRAWN BY: AF

REF:

PART
NAME

TURF TRAY (3 STAGE)

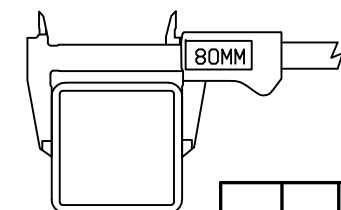
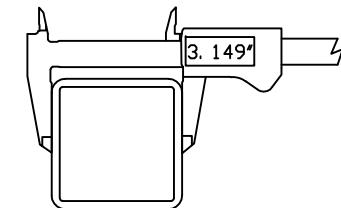
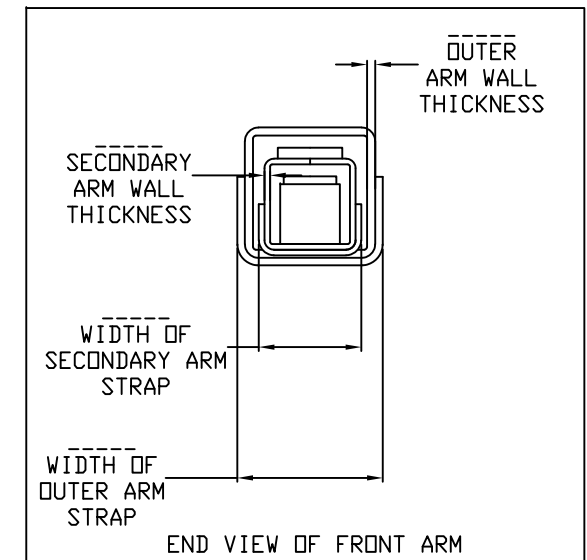
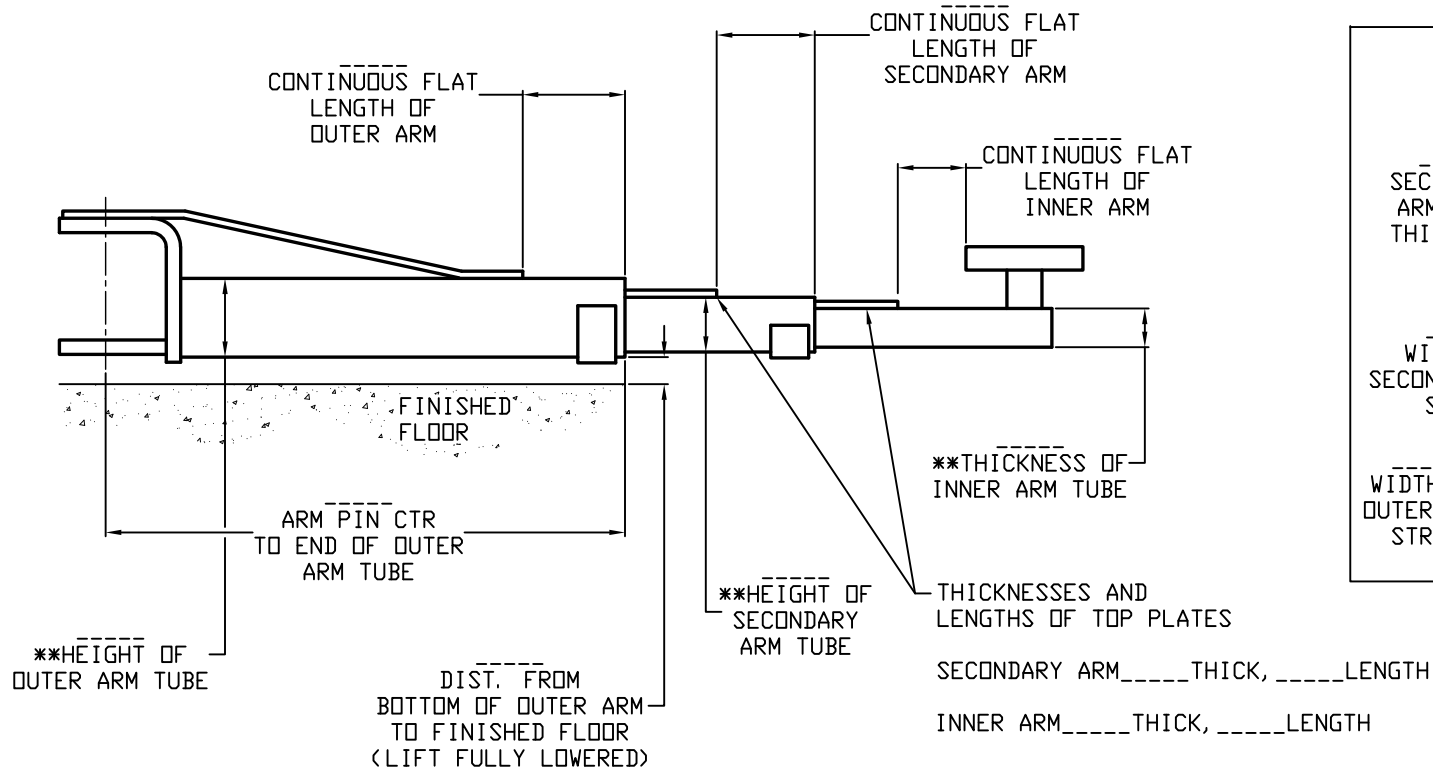
SHEET: 1 of 3

PART
No.

SHEET 1 OF 3

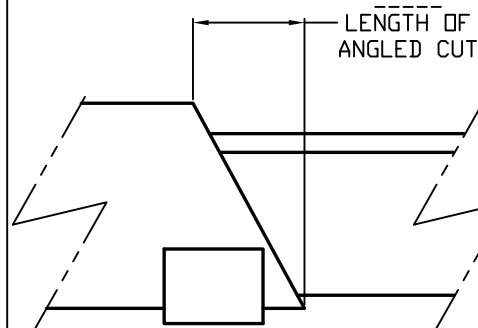
REV:

FRONT ARM DETAILS (3 STAGE) (INNER ARM FULLY EXTENDED)



**NOTE: WHEN MEASURING TUBE SIZE, IT IS RECOMMENDED TO USE A DIGITAL CALIPER TO HELP DISTINGUISH BETWEEN METRIC AND INCH SIZES. EX: 3.149" = 80MM

IF OUTER ARM TUBE END IS CUT AT AN ANGLE



LENGTH OF OUTER ARM STRAP

HEIGHT OF OUTER ARM STRAP

LENGTH OF SECONDARY ARM STRAP

HEIGHT OF SECONDARY ARM STRAP

S V I INTERNATIONAL, INC.
 155 HARVESTORE DRIVE
 DEKALB, IL 60115
 Automotive Service Equipment

TOLERANCE UNLESS NOTED OTHERWISE
 ANGLE $\pm 1^\circ$
 X.X $\pm .062$
 X.XX $\pm .031$
 X.XXX $\pm .015$
 FRACTION $\pm .062$

SCALE: NONE
 DATE: 11/15/18
 DRAWN BY: AF
 REF:

PART NAME

TURF TRAY (3 STAGE)

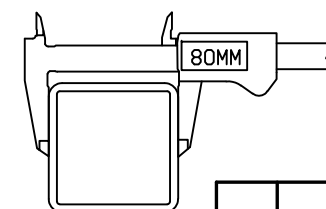
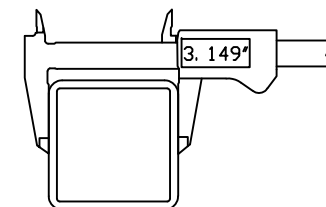
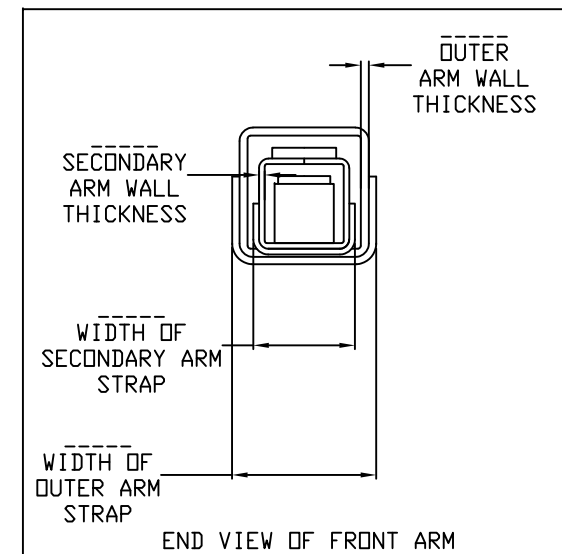
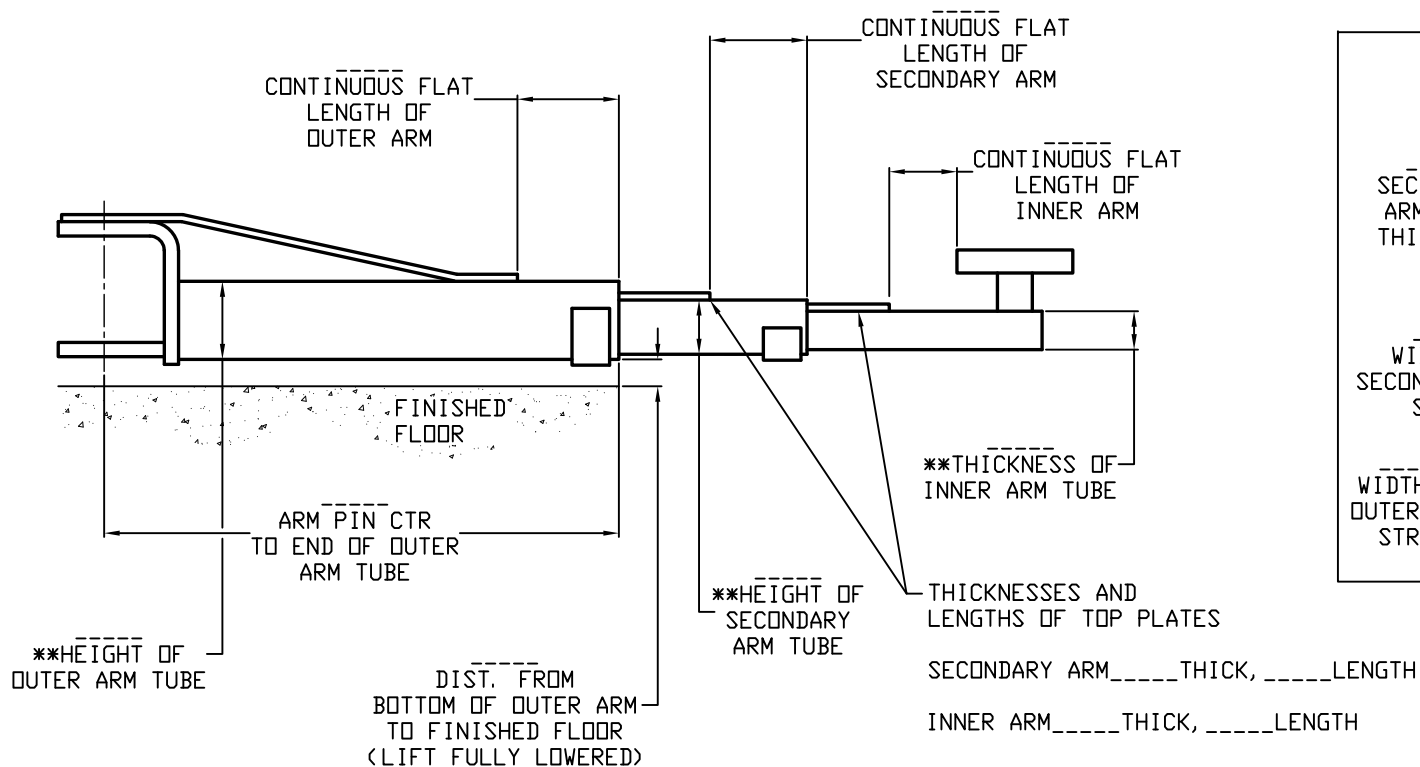
SHEET: 2 of 3

PART No.

SHEET 2 OF 3

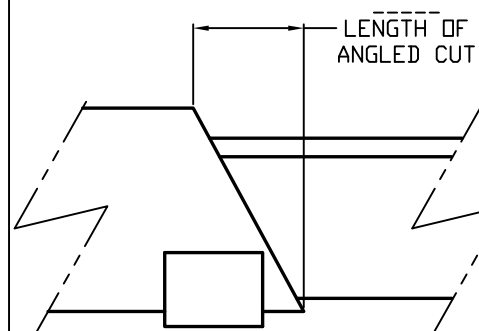
REV:

REAR ARM DETAILS (3 STAGE) (INNER ARM FULLY EXTENDED)



**NOTE: WHEN MEASURING TUBE SIZE, IT IS RECOMMENDED TO USE A DIGITAL CALIPER TO HELP DISTINGUISH BETWEEN METRIC AND INCH SIZES. EX: 3.149" = 80MM

IF OUTER ARM TUBE END IS CUT AT AN ANGLE



LENGTH OF OUTER ARM STRAP

HEIGHT OF OUTER ARM STRAP

LENGTH OF SECONDARY ARM STRAP

HEIGHT OF SECONDARY ARM STRAP

S V I INTERNATIONAL, INC.
 155 HARVESTORE DRIVE
 DEKALB, IL 60115
 Automotive Service Equipment

TOLERANCE UNLESS NOTED OTHERWISE
 ANGLE $\pm 1^\circ$
 X.X $\pm .062$
 X.XX $\pm .031$
 X.XXX $\pm .015$
 FRACTION $\pm .062$

SCALE: NONE
 DATE: 11/15/18
 DRAWN BY: AF
 REF:

PART NAME

TURF TRAY (3 STAGE)

SHEET: 3 of 3

PART No.

SHEET 3 OF 3

REV: