

# 2 STAGE ARMS SYMMETRICAL STYLE LIFT, SWING ARMS FULLY EXTENDED

## LIFT INFORMATION:

LIFT MANUFACTURER \_\_\_\_\_

LIFT MODEL (INCLUDE FULL  
MODEL #) \_\_\_\_\_

LIFT CAPACITY \_\_\_\_\_

DATE OF MANUFACTURE \_\_\_\_\_

## FOR ALL EQUIPMENT INTENDED FOR LIFTING:

SHORTEST WHEELBASE MEASUREMENT \_\_\_\_\_

LONGEST WHEELBASE MEASUREMENT \_\_\_\_\_

## \*\*HEAVIEST EQUIPMENT INTENDED FOR LIFTING:

EQUIPMENT MANUFACTURER \_\_\_\_\_

EQUIPMENT MODEL \_\_\_\_\_

EQUIPMENT WHEEL TRACK FRONT \_\_\_\_\_ REAR \_\_\_\_\_

EQUIPMENT WEIGHT (IF KNOWN) \_\_\_\_\_

**\*\*NOTE:** FOR LIFTS WITH  
DISTANCE BETWEEN ARMS  
109" OR GREATER, OR  
FOR APPLICATIONS IN  
WHICH VEHICLE WEIGHT  
EXCEEDS SPECIFIED  
CAPACITY FOR A  
STANDARD TURF TRAY, A  
HEAVY DUTY TRAY WILL  
BE QUOTED.

ARM PIN  
CTR TO CTR

FRONT ↑

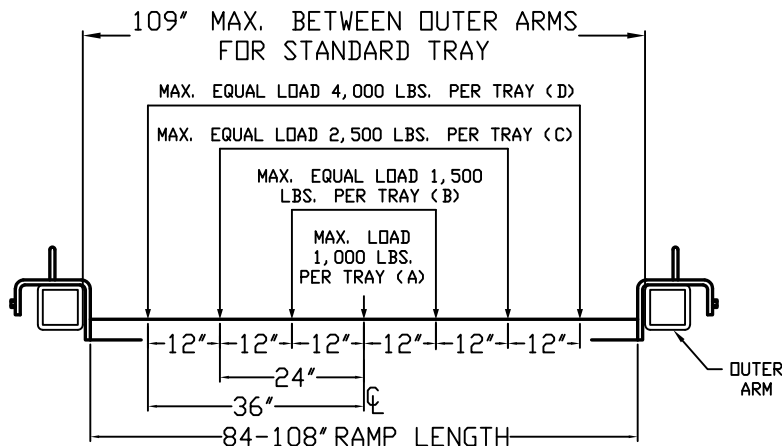
**\*\*\*\*\*NOTE\*\*\*\*\***  
ARMS MUST BE PARALLEL  
WHILE TAKING THESE  
MEASUREMENTS

\*\*WIDTH OF FRONT  
INNER ARM

\*\*WIDTH OF FRONT  
OUTER ARM

\*\*WIDTH OF REAR  
OUTER ARM

\*\*WIDTH OF REAR  
INNER ARM



STANDARD TURF TRAY CAPACITY DIAGRAM



**SVI INTERNATIONAL, INC.**  
155 HARVESTORE DRIVE  
DEKALB, IL 60115  
Automotive Service Equipment

TOLERANCE  
UNLESS NOTED  
OTHERWISE  
ANGLE  $\pm 1^\circ$   
X.X  $\pm .062$   
X.XX  $\pm .031$   
X.XXX  $\pm .015$   
FRACTION  $\pm .062$

REV. BY DATE

SCALE: NONE

DATE: 11/15/18

DRAWN BY: AF

REF:

PART  
NAME

TURF TRAY (2 STAGE)

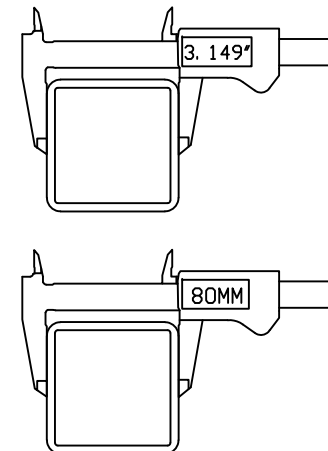
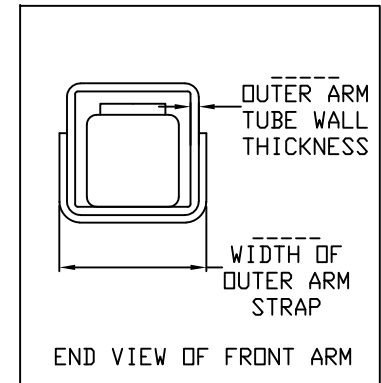
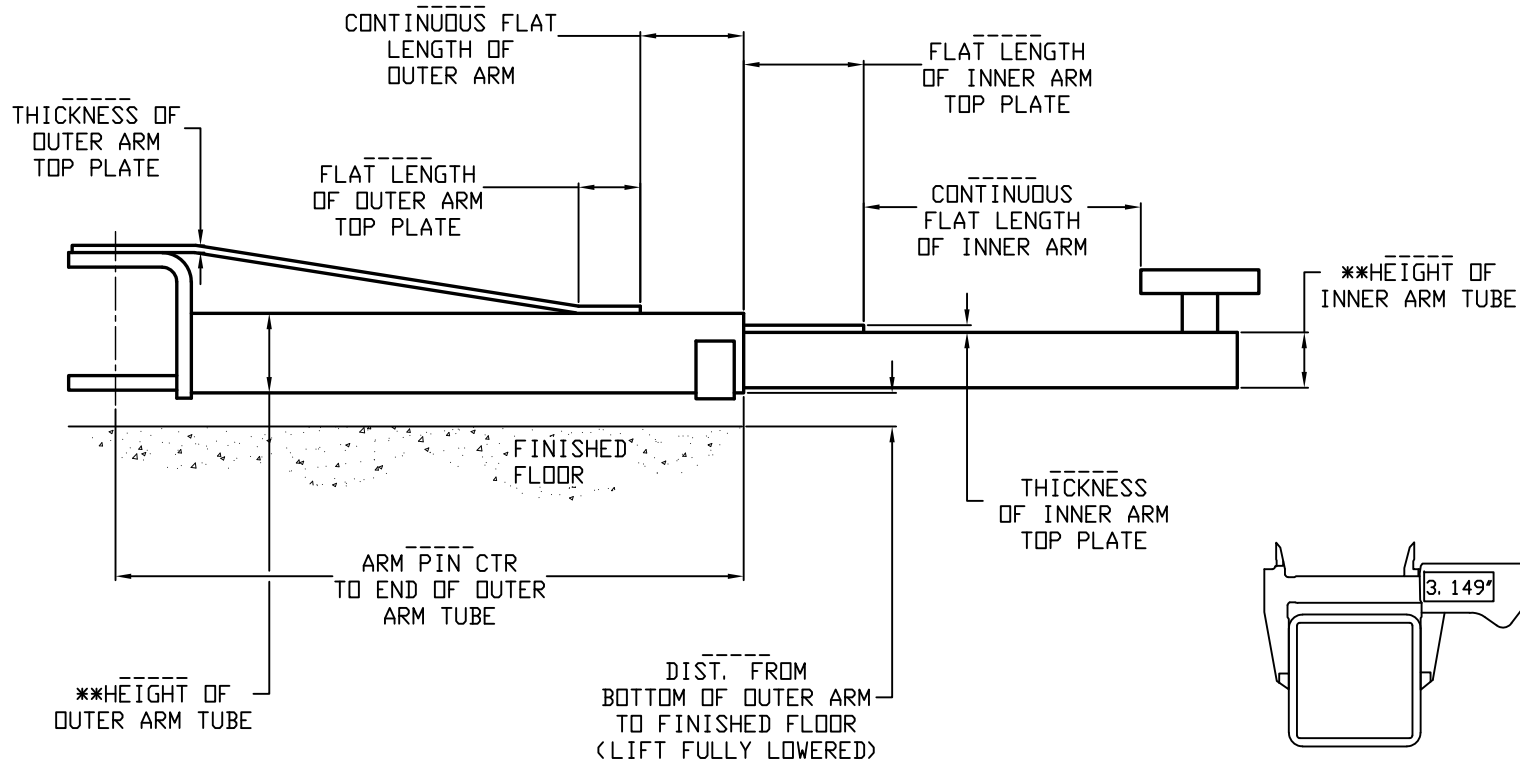
SHEET: 1 of 3

PART  
No.

SHEET 1 OF 3

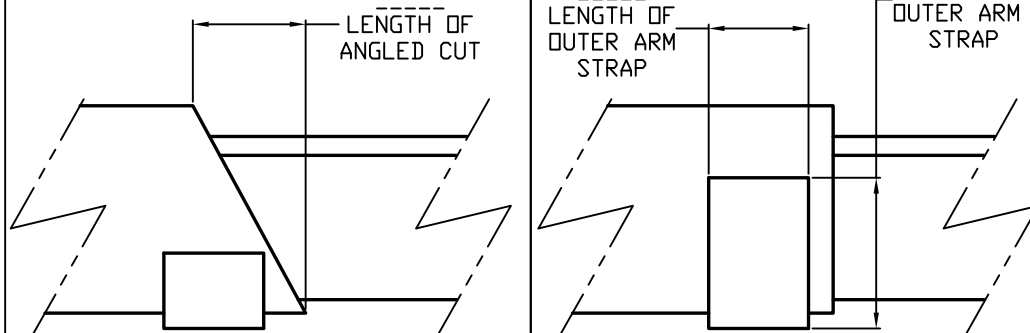
REV:

# FRONT ARM DETAILS (2 STAGE) (INNER ARM FULLY EXTENDED)



**\*\*NOTE:** WHEN MEASURING TUBE SIZE, IT IS RECOMMENDED TO USE A DIGITAL CALIPER TO HELP DISTINGUISH BETWEEN METRIC AND INCH SIZES. EX: 3.149" = 80MM

IF OUTER ARM TUBE END IS CUT AT AN ANGLE



**SVI INTERNATIONAL, INC.**  
155 HARVESTORE DRIVE  
DEKALB, IL 60115  
Automotive Service Equipment

TOLERANCE  
UNLESS NOTED  
OTHERWISE  
ANGLE  $\pm 1^\circ$   
X.X  $\pm .062$   
X.XX  $\pm .031$   
X.XXX  $\pm .015$   
FRACTION  $\pm .062$

REV.	BY	DATE
SCALE: NONE		
DATE: 11/15/18		
DRAWN BY: AF		
REF:		
SHEET: 2 of 3		
REV:		

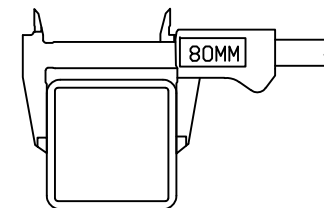
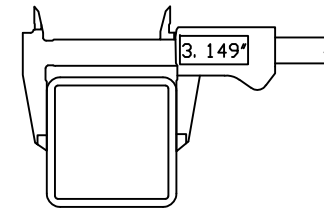
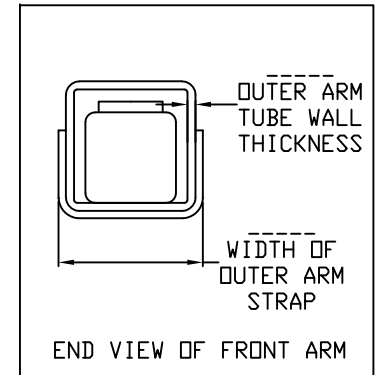
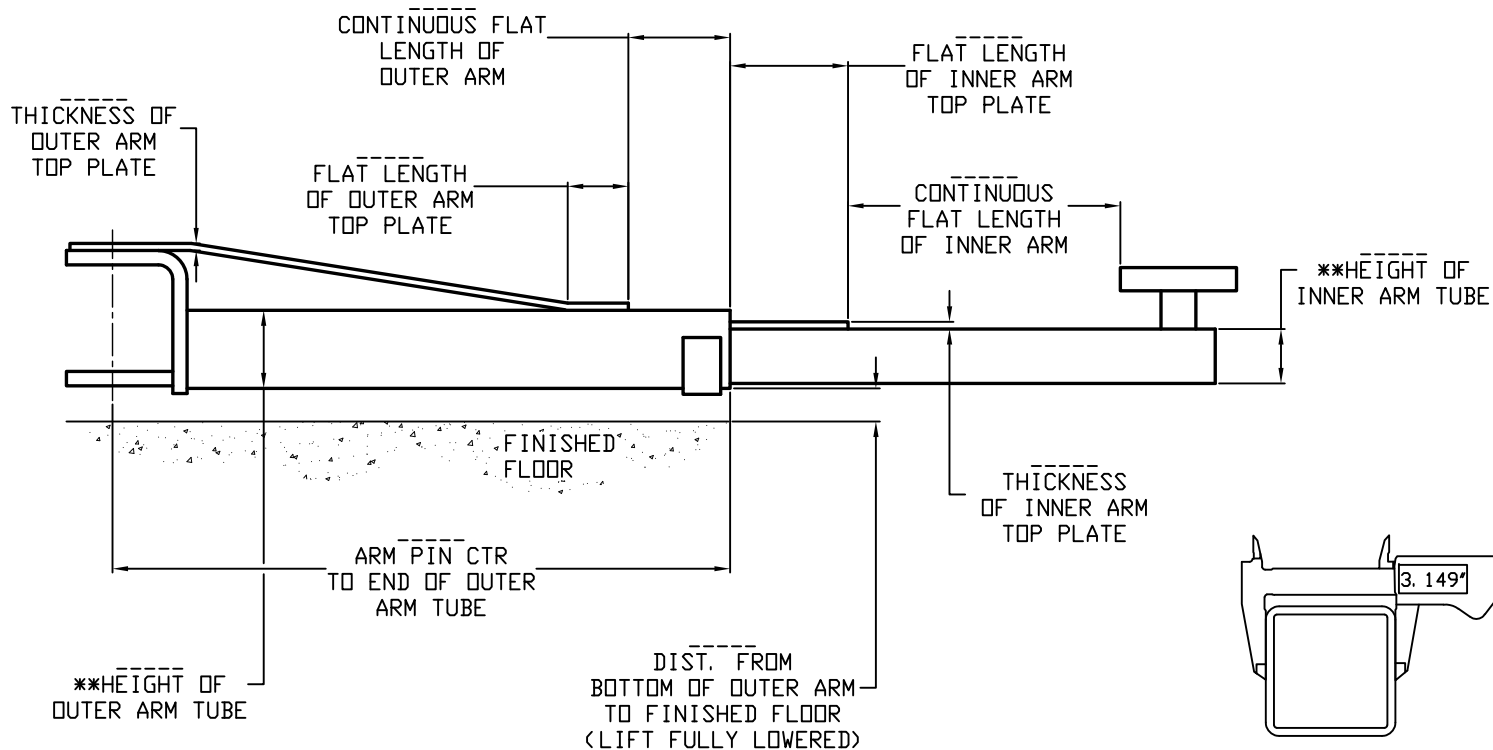
PART  
NAME

TURF TRAY (2 STAGE)

PART  
No.

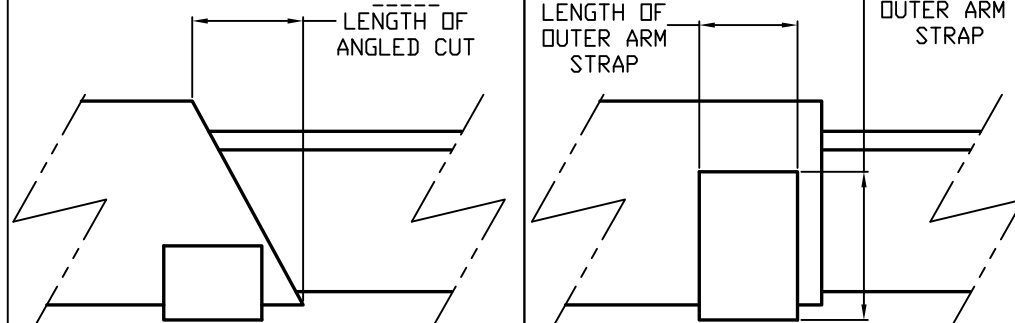
SHEET 2 OF 3

# REAR ARM DETAILS (2 STAGE) (INNER ARM FULLY EXTENDED)



**\*\*NOTE:** WHEN MEASURING TUBE SIZE, IT IS RECOMMENDED TO USE A DIGITAL CALIPER TO HELP DISTINGUISH BETWEEN METRIC AND INCH SIZES. EX: 3.149" = 80MM

IF OUTER ARM TUBE END IS CUT AT AN ANGLE



**S V I INTERNATIONAL, INC.**  
**155 HARVESTORE DRIVE**  
**DEKALB, IL 60115**  
 Automotive Service Equipment

TOLERANCE  
 UNLESS NOTED  
 OTHERWISE  
 ANGLE  $\pm 1^\circ$   
 X.X  $\pm .062$   
 X.XX  $\pm .031$   
 X.XXX  $\pm .015$   
 FRACTION  $\pm .062$

REV.	BY	DATE

SCALE: NONE

DATE: 11/15/18

DRAWN BY: AF

REF:

PART  
 NAME

TURF TRAY (2 STAGE)

SHEET: 3 of 3

PART  
 No.

SHEET 3 OF 3

REV: