

The #1 Source for Auto Lift Power Units!

## BH-7006A Series - Single Phase SPX Stone Power Unit



**SPX STONE™** SPX Stone power units are a compact hydraulic power source utilizing an electric motor with the capability to generate high pressure ratings. The units are built specially for SVI and the industry it serves to provide a wide range of customer-specified pressure relief valve settings. The ability to properly select the required pressure relief allows industry professionals to confidently match the right power unit to the application. SVI performs this service routinely every day to ensure power units are shipped on a same-day basis with the correct pressure relief setting required for the job.

### 208-230 VAC, 2HP, 1PH, 3450 RPM Motor 4.0 Gallon Reservoir

- Frame: 56 FR
- Max Amps: 230 VAC 18
- Pump: 2.3 GPM @ 2200 PSI\*
- Maximum Run Time: 75 Seconds
- Pressure / Return Port Size: 9/16" SAE
- Auxiliary Return Port: 3/8" NPT

Part #	SPX / Stone #	Pressure Relief Valve (psi/bar)	Motor	Pump	Easy Adaptation Kit
BH-7006A-13	AB-1488	1885 psi / 130 bar	208-230 VAC, 2HP, 1PH, 3450 RPM	2.5CC/Rev	Optional BH-7000-00
BH-7006A-14	AB-1488	2030 psi / 140 bar	208-230 VAC, 2HP, 1PH, 3450 RPM	2.5CC/Rev	Optional BH-7000-00
BH-7006A-15	AB-1488	2175 psi / 150 bar	208-230 VAC, 2HP, 1PH, 3450 RPM	2.5CC/Rev	Optional BH-7000-00
BH-7006A-16	AB-1488	2320 psi / 160 bar	208-230 VAC, 2HP, 1PH, 3450 RPM	2.5CC/Rev	Optional BH-7000-00
BH-7006A-17	AB-1488	2465 psi / 170 bar	208-230 VAC, 2HP, 1PH, 3450 RPM	2.5CC/Rev	Optional BH-7000-00
BH-7006A-18	AB-1488	2610 psi / 180 bar	208-230 VAC, 2HP, 1PH, 3450 RPM	2.5CC/Rev	Optional BH-7000-00
BH-7006A-19	AB-1488	2755 psi / 190 bar	208-230 VAC, 2HP, 1PH, 3450 RPM	2.5CC/Rev	Optional BH-7000-00
BH-7006A-20	AB-1488	2900 psi / 200 bar	208-230 VAC, 2HP, 1PH, 3450 RPM	2.5CC/Rev	Optional BH-7000-00
BH-7006A-21	AB-1488	3045 psi / 210 bar	208-230 VAC, 2HP, 1PH, 3450 RPM	2.5CC/Rev	Optional BH-7000-00
BH-7006-01-22	AB-1488	3190 psi / 220 bar	208-230 VAC, 2HP, 1PH, 3450 RPM	1.6CC/Rev	Optional BH-7000-00
BH-7006-01-23	AB-1488	3335 psi / 230 bar	208-230 VAC, 2HP, 1PH, 3450 RPM	1.6CC/Rev	Optional BH-7000-00
BH-7006-01-24	AB-1488	3480 psi / 240 bar	208-230 VAC, 2HP, 1PH, 3450 RPM	1.6CC/Rev	Optional BH-7000-00
BH-7006-01-25	AB-1488	3625 psi / 250 bar	208-230 VAC, 2HP, 1PH, 3450 RPM	1.6CC/Rev	Optional BH-7000-00
BH-7006-01-26	AB-1488	3770 psi / 260 bar	208-230 VAC, 2HP, 1PH, 3450 RPM	1.6CC/Rev	Optional BH-7000-00



### OPTIONAL EASY ADAPTATION KIT

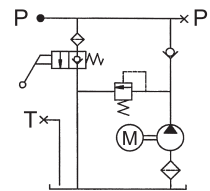
Order: BH-7000-00

#### CONTENTS

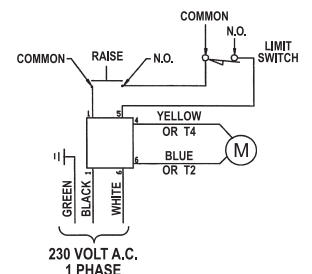
- (1) BH-7000-02 36" Long Hose, 1/4" Hose, 3000 psi, -6 Male End and -6 Swivel Female End
- (1) BH-7000-06 Male 90° Elbow, -6 JIC to -SAE Straight Thread, Zinc Plated Steel
- (1) BH-7000-07 Swivel Nut Branch Tee, -6 Male to -6 Male to -6 Female Swivel Out, Zinc Plated Steel
- (1) BH-7000-08 8" Long, 1/4" Hose, 3000 psi, -6 Male End and -6 Swivel Female End
- (1) BH-7000-09A 24" Cable Tie, 0.36" Wide

\* BH-7006-01-22/26 1.5 GPM @ 3190 to 3770 PSI

#### HYDRAULIC CIRCUIT



#### ELECTRIC CIRCUIT



**SVI International, Inc.**  
155 Harvestore Drive • DeKalb, IL 60115  
**800-321-8173 • 815-748-0200**

[www.sviinternational.com](http://www.sviinternational.com)

BALTIMORE • CHICAGO • LOS ANGELES

The #1 Source for Auto Lift Power Units!

## BH-7006-01 Series - Single Phase SPX Stone Power Unit



**SPX STONE™** SPX Stone power units are a compact hydraulic power source utilizing an electric motor with the capability to generate high pressure ratings. The units are built specially for SVI and the industry it serves to provide a wide range of customer-specified pressure relief valve settings. The ability to properly select the required pressure relief allows industry professionals to confidently match the right power unit to the application. SVI performs this service routinely every day to ensure power units are shipped on a same-day basis with the correct pressure relief setting required for the job.

### 208-230 VAC, 2HP, 1PH, 3450 RPM Motor 4.0 Gallon Reservoir

- Frame: 56 FR
- Max Amps: 230 VAC 18
- Pump: 2.3 GPM @ 2200 PSI\*
- Maximum Run Time: 75 Seconds
- Pressure / Return Port Size: 9/16" SAE
- Auxiliary Return Port: 3/8" NPT

Part #	SPX / Stone #	Pressure Relief Valve (psi/bar)	Motor	Pump	Easy Adaptation Kit
BH-7006-01-13	AB-1488	1885 psi / 130 bar	208-230 VAC, 2HP, 1PH, 3450 RPM	2.5CC/Rev	Included BH-7000-00
BH-7006-01-14	AB-1488	2030 psi / 140 bar	208-230 VAC, 2HP, 1PH, 3450 RPM	2.5CC/Rev	Included BH-7000-00
BH-7006-01-15	AB-1488	2175 psi / 150 bar	208-230 VAC, 2HP, 1PH, 3450 RPM	2.5CC/Rev	Included BH-7000-00
BH-7006-01-16	AB-1488	2320 psi / 160 bar	208-230 VAC, 2HP, 1PH, 3450 RPM	2.5CC/Rev	Included BH-7000-00
BH-7006-01-17	AB-1488	2465 psi / 170 bar	208-230 VAC, 2HP, 1PH, 3450 RPM	2.5CC/Rev	Included BH-7000-00
BH-7006-01-18	AB-1488	2610 psi / 180 bar	208-230 VAC, 2HP, 1PH, 3450 RPM	2.5CC/Rev	Included BH-7000-00
BH-7006-01-19	AB-1488	2755 psi / 190 bar	208-230 VAC, 2HP, 1PH, 3450 RPM	2.5CC/Rev	Included BH-7000-00
BH-7006-01-20	AB-1488	2900 psi / 200 bar	208-230 VAC, 2HP, 1PH, 3450 RPM	2.5CC/Rev	Included BH-7000-00
BH-7006-01-21	AB-1488	3045 psi / 210 bar	208-230 VAC, 2HP, 1PH, 3450 RPM	2.5CC/Rev	Included BH-7000-00
BH-7006-01-22	AB-1488	3190 psi / 220 bar	208-230 VAC, 2HP, 1PH, 3450 RPM	1.6CC/Rev	Optional BH-7000-00
BH-7006-01-23	AB-1488	3335 psi / 230 bar	208-230 VAC, 2HP, 1PH, 3450 RPM	1.6CC/Rev	Optional BH-7000-00
BH-7006-01-24	AB-1488	3480 psi / 240 bar	208-230 VAC, 2HP, 1PH, 3450 RPM	1.6CC/Rev	Optional BH-7000-00
BH-7006-01-25	AB-1488	3625 psi / 250 bar	208-230 VAC, 2HP, 1PH, 3450 RPM	1.6CC/Rev	Optional BH-7000-00
BH-7006-01-26	AB-1488	3770 psi / 260 bar	208-230 VAC, 2HP, 1PH, 3450 RPM	1.6CC/Rev	Optional BH-7000-00

### EASY ADAPTATION KIT • BH-7000-00

**Included with:** BH-7006-01-13 thru -21

**Optional for:** BH-7006-01-22 thru -26

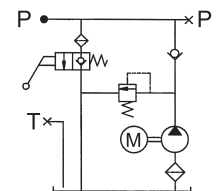
#### CONTENTS

- (1) BH-7000-02 36" Long Hose, 1/4" Hose, 3000 psi, -6 Male End and -6 Swivel Female End
- (1) BH-7000-06 Male 90° Elbow, -6 JIC to -SAE Straight Thread, Zinc Plated Steel
- (1) BH-7000-07 Swivel Nut Branch Tee, -6 Male to -6 Male to -6 Female Swivel Out, Zinc Plated Steel
- (1) BH-7000-08 8" Long, 1/4" Hose, 3000 psi, -6 Male End and -6 Swivel Female End
- (1) BH-7000-09A 24" Cable Tie, 0.36" Wide

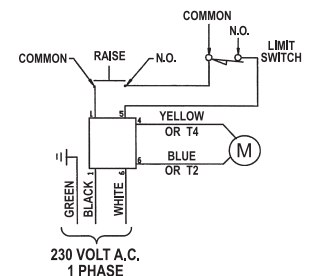
\* BH-7006-01-22/26 1.5 GPM @ 3190 to 3770 PSI



### HYDRAULIC CIRCUIT



### ELECTRIC CIRCUIT



**SVI International, Inc.**  
155 Harvestore Drive • DeKalb, IL 60115  
**800-321-8173 • 815-748-0200**

[www.sviinternational.com](http://www.sviinternational.com)

BALTIMORE • CHICAGO • LOS ANGELES

The #1 Source for Auto Lift Power Units!

## BH-7006-01LS Series - Single Phase SPX Stone Power Unit



### LS Series • Power Unit with Limit Switch

**SPX STONE™** SPX Stone power units are a compact hydraulic power source utilizing an electric motor with the capability to generate high pressure ratings. The units are built specially for SVI and the industry it serves to provide a wide range of customer-specified pressure relief valve settings. The ability to properly select the required pressure relief allows industry professionals to confidently match the right power unit to the application. SVI performs this service routinely every day to ensure power units are shipped on a same-day basis with the correct pressure relief setting required for the job.

The Overhead Limit Switch Release is connected to a cable that goes up to the overhead and across. The switch housing is installed at the top of the push-to-raise housing on the power unit and below the limit switch release is another micro switch wired in concert with the push-to-raise micro switch. When a vehicle hits the overhead limit bar the cable is pulled up moving the switch housing plunger up and off the second micro switch pushbutton which opens the circuit and causes the lift to shut down, stopping its upward movement.

### 208-230 VAC, 2HP, 1PH, 3450 RPM Motor 4.0 Gallon Reservoir

- Frame: 56 FR
- Max Amps: 230 VAC 18
- Pump: 2.3 GPM@2200 PSI
- Maximum Run Time: 75 Seconds
- Pressure / Return Port Size: 9/16" SAE
- Auxiliary Return Port: 3/8" NPT



Part #	SPX / Stone #	Pressure Relief Valve (psi/bar)	Motor	Pump	Easy Adaptation Kit
BH-7006-01LS-13	AB-1270	1885 psi / 130 bar	208-230 VAC, 2HP, 1PH, 3450 RPM	2.5CC/Rev	Optional BH-7000-00
BH-7006-01LS-14	AB-1270	2030 psi / 140 bar	208-230 VAC, 2HP, 1PH, 3450 RPM	2.5CC/Rev	Optional BH-7000-00
BH-7006-01LS-15	AB-1270	2175 psi / 150 bar	208-230 VAC, 2HP, 1PH, 3450 RPM	2.5CC/Rev	Optional BH-7000-00
BH-7006-01LS-16	AB-1270	2320 psi / 160 bar	208-230 VAC, 2HP, 1PH, 3450 RPM	2.5CC/Rev	Optional BH-7000-00
BH-7006-01LS-17	AB-1270	2465 psi / 170 bar	208-230 VAC, 2HP, 1PH, 3450 RPM	2.5CC/Rev	Optional BH-7000-00
BH-7006-01LS-18	AB-1270	2610 psi / 180 bar	208-230 VAC, 2HP, 1PH, 3450 RPM	2.5CC/Rev	Optional BH-7000-00
BH-7006-01LS-19	AB-1270	2755 psi / 190 bar	208-230 VAC, 2HP, 1PH, 3450 RPM	2.5CC/Rev	Optional BH-7000-00
BH-7006-01LS-20	AB-1270	2900 psi / 200 bar	208-230 VAC, 2HP, 1PH, 3450 RPM	2.5CC/Rev	Optional BH-7000-00
BH-7006-01LS-21	AB-1270	3045 psi / 210bar	208-230 VAC, 2HP, 1PH, 3450 RPM	2.5CC/Rev	Optional BH-7000-00

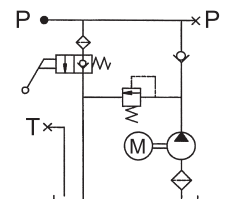


### OPTIONAL EASY ADAPTATION KIT Order: BH-7000-00

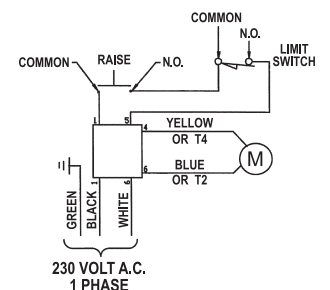
#### CONTENTS

- (1) BH-7000-02 36" Long Hose, 1/4" Hose, 3000 psi, -6 Male End and -6 Swivel Female End
- (1) BH-7000-06 Male 90° Elbow, -6 JIC to -SAE Straight Thread, Zinc Plated Steel
- (1) BH-7000-07 Swivel Nut Branch Tee, -6 Male to -6 Male to -6 Female Swivel Out, Zinc Plated Steel
- (1) BH-7000-08 8" Long, 1/4" Hose, 3000 psi, -6 Male End and -6 Swivel Female End
- (1) BH-7000-09A 24" Cable Tie, 0.36" Wide

#### HYDRAULIC CIRCUIT



#### ELECTRIC CIRCUIT



**SVI International, Inc.**  
155 Harvestore Drive • DeKalb, IL 60115  
**800-321-8173 • 815-748-0200**  
[www.sviinternational.com](http://www.sviinternational.com)

BALTIMORE • CHICAGO • LOS ANGELES

The #1 Source for Auto Lift Power Units!

## BH-7006-03 Series - Three Phase SPX Stone Power Unit



**SPX STONE™** SPX Stone power units are a compact hydraulic power source utilizing an electric motor with the capability to generate high pressure ratings. The units are built specially for SVI and the industry it serves to provide a wide range of customer-specified pressure relief valve settings. The ability to properly select the required pressure relief allows industry professionals to confidently match the right power unit to the application. SVI performs this service routinely every day to ensure power units are shipped on a same-day basis with the correct pressure relief setting required for the job.

### 208-230/460 VAC, 2HP, 3PH, 3450 RPM T.E.F.C. Motor 4.0 Gallon Reservoir

Frame: 56 FR  
Max Amps: 460 VAC 10.5  
Pump: 1.7 GPM@2450 PSI

Maximum Run Time: 75 Seconds  
(Exception: 55 Seconds for BH-7006-03-21)  
Pressure / Return Port Size: 9/16" SAE  
Auxiliary Return Port: 3/8" NPT

Part #	SPX / Stone #	Pressure Relief Valve (psi/bar)	Motor	Pump	Easy Adaptation Kit
BH-7006-03-13	AD-1234	1885 psi / 130 bar	208-230/460 VAC, 2HP, 3PH, 3450 RPM	2.0CC/Rev	Optional BH-7000-00
BH-7006-03-14	AD-1234	2030 psi / 140 bar	208-230/460 VAC, 2HP, 3PH, 3450 RPM	2.0CC/Rev	Optional BH-7000-00
BH-7006-03-15	AD-1234	2175 psi / 150 bar	208-230/460 VAC, 2HP, 3PH, 3450 RPM	2.0CC/Rev	Optional BH-7000-00
BH-7006-03-16	AD-1234	2320 psi / 160 bar	208-230/460 VAC, 2HP, 3PH, 3450 RPM	2.0CC/Rev	Optional BH-7000-00
BH-7006-03-17	AD-1234	2465 psi / 170 bar	208-230/460 VAC, 2HP, 3PH, 3450 RPM	2.0CC/Rev	Optional BH-7000-00
BH-7006-03-18	AD-1234	2610 psi / 180 bar	208-230/460 VAC, 2HP, 3PH, 3450 RPM	2.0CC/Rev	Optional BH-7000-00
BH-7006-03-19	AD-1234	2755 psi / 190 bar	208-230/460 VAC, 2HP, 3PH, 3450 RPM	2.0CC/Rev	Optional BH-7000-00
BH-7006-03-20	AD-1234	2900 psi / 200 bar	208-230/460 VAC, 2HP, 3PH, 3450 RPM	2.0CC/Rev	Optional BH-7000-00
BH-7006-03-21	AD-1234	3045 psi / 210 bar	208-230/460 VAC, 2HP, 3PH, 3450 RPM	2.0CC/Rev	Optional BH-7000-00

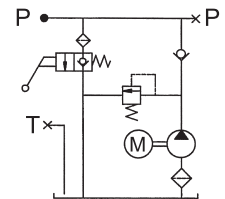


### OPTIONAL EASY ADAPTATION KIT Order: BH-7000-00

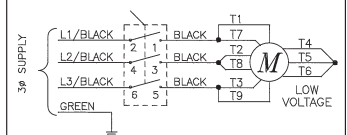
#### CONTENTS

- (1) BH-7000-02 36" Long Hose, 1/4" Hose, 3000 psi, -6 Male End and -6 Swivel Female End
- (1) BH-7000-06 Male 90° Elbow, -6 JIC to -SAE Straight Thread, Zinc Plated Steel
- (1) BH-7000-07 Swivel Nut Branch Tee, -6 Male to -6 Male to -6 Female Swivel Out, Zinc Plated Steel
- (1) BH-7000-08 8" Long, 1/4" Hose, 3000 psi, -6 Male End and -6 Swivel Female End
- (1) BH-7000-09A 24" Cable Tie, 0.36" Wide

#### HYDRAULIC CIRCUIT



#### ELECTRIC CIRCUIT



**SVI International, Inc.**  
155 Harvestore Drive • DeKalb, IL 60115  
**800-321-8173 • 815-748-0200**  
[www.sviinternational.com](http://www.sviinternational.com)

BALTIMORE • CHICAGO • LOS ANGELES

The #1 Source for Auto Lift Power Units!

## BH-7006-05 Series - Single Phase SPX Stone Power Unit



**SPX STONE™** SPX Stone power units are a compact hydraulic power source utilizing an electric motor with the capability to generate high pressure ratings. The units are built specially for SVI and the industry it serves to provide a wide range of customer-specified pressure relief valve settings. The ability to properly select the required pressure relief allows industry professionals to confidently match the right power unit to the application. SVI performs this service routinely every day to ensure power units are shipped on a same-day basis with the correct pressure relief setting required for the job.

### 208-230 VAC, 2HP, 1PH, 3450 RPM Motor 6.3 Gallon Reservoir

**Frame:** 56 FR  
**Max Amps:** 230 VAC 19  
**Pump:** 1.7 GPM@2450 PSI

**Maximum Run Time:** 75 Seconds  
**Pressure / Return Port Size:** 9/16" SAE  
**Auxiliary Return Port:** 3/8" NPT

Part #	SPX / Stone #	Pressure Relief Valve (psi/bar)	Motor	Pump	Easy Adaptation Kit
BH-7006-05-14	AB-1545	2030 psi / 140 bar	208-230 VAC, 2HP, 1PH, 3450 RPM	2.0CC/Rev	Optional BH-7000-00
BH-7006-05-15	AB-1545	2175 psi / 150 bar	208-230 VAC, 2HP, 1PH, 3450 RPM	2.0CC/Rev	Optional BH-7000-00
BH-7006-05-16	AB-1545	2320 psi / 160 bar	208-230 VAC, 2HP, 1PH, 3450 RPM	2.0CC/Rev	Optional BH-7000-00
BH-7006-05-17	AB-1545	2465 psi / 170 bar	208-230 VAC, 2HP, 1PH, 3450 RPM	2.0CC/Rev	Optional BH-7000-00
BH-7006-05-18	AB-1545	2610 psi / 180 bar	208-230 VAC, 2HP, 1PH, 3450 RPM	2.0CC/Rev	Optional BH-7000-00
BH-7006-05-19	AB-1545	2755 psi / 190 bar	208-230 VAC, 2HP, 1PH, 3450 RPM	2.0CC/Rev	Optional BH-7000-00
BH-7006-05-20	AB-1545	2900 psi / 200 bar	208-230 VAC, 2HP, 1PH, 3450 RPM	2.0CC/Rev	Optional BH-7000-00
BH-7006-05-21	AB-1545	3045 psi / 210 bar	208-230 VAC, 2HP, 1PH, 3450 RPM	2.0CC/Rev	Optional BH-7000-00

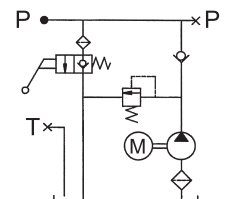


### OPTIONAL EASY ADAPTATION KIT Order: BH-7000-00

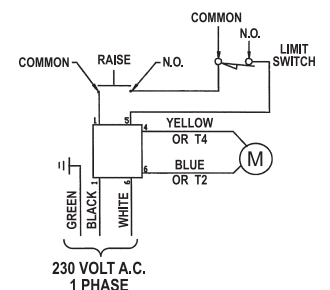
#### CONTENTS

- (1) BH-7000-02 36" Long Hose, 1/4" Hose, 3000 psi, -6 Male End and -6 Swivel Female End
- (1) BH-7000-06 Male 90° Elbow, -6 JIC to -SAE Straight Thread, Zinc Plated Steel
- (1) BH-7000-07 Swivel Nut Branch Tee, -6 Male to -6 Male to -6 Female Swivel Out, Zinc Plated Steel
- (1) BH-7000-08 8" Long, 1/4" Hose, 3000 psi, -6 Male End and -6 Swivel Female End
- (1) BH-7000-09A 24" Cable Tie, 0.36" Wide

#### HYDRAULIC CIRCUIT



#### ELECTRIC CIRCUIT



**SVI International, Inc.**  
155 Harvestore Drive • DeKalb, IL 60115  
**800-321-8173 • 815-748-0200**  
[www.sviinternational.com](http://www.sviinternational.com)

BALTIMORE • CHICAGO • LOS ANGELES

BH-7006-08  
Pictured



The #1 Source for Auto Lift Power Units!

## BH-7006-08 / BH-7007-03 Series Single Phase • SPX Stone Power Unit



**SPX STONE™** SPX Stone power units are a compact hydraulic power source utilizing an electric motor with the capability to generate high pressure ratings. The units are built specially for SVI and the industry it serves to provide a wide range of customer-specified pressure relief valve settings. The ability to properly select the required pressure relief allows industry professionals to confidently match the right power unit to the application. SVI performs this service routinely every day to ensure power units are shipped on a same-day basis with the correct pressure relief setting required for the job.

### BH-7006-08 Series

#### 115/230 VAC, 1HP, 1PH, 3450 RPM Motor • 4.0 Gallon Reservoir

Frame: 56 FR

Max Amps: 115/230 VAC 13/6.5

Pump: 1.2 GPM@2200 PSI

Maximum Run Time: 75 Seconds

Pressure / Return Port Size: 9/16" SAE

Auxiliary Return Port: 3/8" NPT

BH-7006-08

LESS PLUG

### BH-7007-03 Series

#### 115/230 VAC, 1HP, 1PH, 3450 RPM Motor • 4.0 Gallon Reservoir

Frame: 56 FR

Max Amps: 115 VAC 19

Pump: 0.79 GPM@2200 PSI

Maximum Run Time: 75 Seconds

Pressure / Return Port Size: 9/16" SAE

Auxiliary Return Port: 3/8" NPT

BH-7007-03

WITH 110V PLUG

Part #	SPX / Stone #	Pressure Relief Valve (psi/bar)	Motor	Pump	Easy Adaptation Kit
BH-7006-08-14	AB-1588	2030 psi / 140 bar	115/230 VAC, 1HP, 1PH, 3450 RPM, 110 Volt	1.6CC/Rev	Optional BH-7000-00
BH-7006-08-15	AB-1588	2175 psi / 150 bar	115/230 VAC, 1HP, 1PH, 3450 RPM, 110 Volt	1.6CC/Rev	Optional BH-7000-00
BH-7006-08-16	AB-1588	2320 psi / 160 bar	115/230 VAC, 1HP, 1PH, 3450 RPM, 110 Volt	1.6CC/Rev	Optional BH-7000-00
BH-7006-08-17	AB-1588	2465 psi / 170 bar	115/230 VAC, 1HP, 1PH, 3450 RPM, 110 Volt	1.6CC/Rev	Optional BH-7000-00
BH-7006-08-18	AB-1588	2610 psi / 180 bar	115/230 VAC, 1HP, 1PH, 3450 RPM, 110 Volt	1.6CC/Rev	Optional BH-7000-00
BH-7007-03-14	AB-1396	2030 psi / 140 bar	115/230 VAC, 1HP, 1PH, 3450 RPM, 110 Volt	1.0CC/Rev	Optional BH-7000-00
BH-7007-03-15	AB-1396	2175 psi / 150 bar	115/230 VAC, 1HP, 1PH, 3450 RPM, 110 Volt	1.0CC/Rev	Optional BH-7000-00
BH-7007-03-16	AB-1396	2320 psi / 160 bar	115/230 VAC, 1HP, 1PH, 3450 RPM, 110 Volt	1.0CC/Rev	Optional BH-7000-00
BH-7007-03-17	AB-1396	2465 psi / 170 bar	115/230 VAC, 1HP, 1PH, 3450 RPM, 110 Volt	1.0CC/Rev	Optional BH-7000-00
BH-7007-03-18	AB-1396	2610 psi / 180 bar	115/230 VAC, 1HP, 1PH, 3450 RPM, 110 Volt	1.0CC/Rev	Optional BH-7000-00



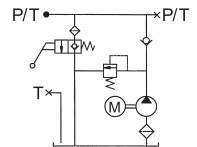
### OPTIONAL EASY ADAPTATION KIT

Order: BH-7000-00

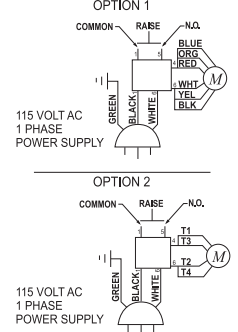
#### CONTENTS

- (1) BH-7000-02 36" Long Hose, 1/4" Hose, 3000 psi, -6 Male End and -6 Swivel Female End
- (1) BH-7000-06 Male 90° Elbow, -6 JIC to -SAE Straight Thread, Zinc Plated Steel
- (1) BH-7000-07 Swivel Nut Branch Tee, -6 Male to -6 Male to -6 Female Swivel Out, Zinc Plated Steel
- (1) BH-7000-08 8" Long, 1/4" Hose, 3000 psi, -6 Male End and -6 Swivel Female End
- (1) BH-7000-09A 24" Cable Tie, 0.36" Wide

#### HYDRAULIC CIRCUIT



#### ELECTRIC CIRCUIT



**SVI International, Inc.**  
155 Harvestore Drive • DeKalb, IL 60115  
**800-321-8173 • 815-748-0200**

[www.sviinternational.com](http://www.sviinternational.com)

BALTIMORE • CHICAGO • LOS ANGELES

The #1 Source for Auto Lift Power Units!

## BH-7007-01 Series - Single Phase SPX Stone Power Unit



**SPX STONE™** SPX Stone power units are a compact hydraulic power source utilizing an electric motor with the capability to generate high pressure ratings. The units are built specially for SVI and the industry it serves to provide a wide range of customer-specified pressure relief valve settings. The ability to properly select the required pressure relief allows industry professionals to confidently match the right power unit to the application. SVI performs this service routinely every day to ensure power units are shipped on a same-day basis with the correct pressure relief setting required for the job.

Horizontal or  
Vertical Mount

### 115/230 VAC, 3/4HP, 1PH, 3450 RPM Motor 6.5 Quart Reservoir

Frame: 56 FR  
Max Amps: 115/230 VAC 15/7.5  
Pump: 0.6 GPM@2000 PSI  
Maximum Run Time: 75 Seconds  
Pressure / Return Port Size: 9/16" SAE  
Auxiliary Return Port: 3/8" NPT

Part #	SPX / Stone #	Pressure Relief Valve (psi/bar)	Motor	Pump	Easy Adaptation Kit
BH-7007-01-14	AC-10TC	2030 psi / 140 bar	115/230 VAC, 3/4HP, 1PH, 3450 RPM, 110 Volt	0.8CC/Rev	Optional BH-7000-00
BH-7007-01-15	AC-10TC	2175 psi / 150 bar	115/230 VAC, 3/4HP, 1PH, 3450 RPM, 110 Volt	0.8CC/Rev	Optional BH-7000-00
BH-7007-01-16	AC-10TC	2320 psi / 160 bar	115/230 VAC, 3/4HP, 1PH, 3450 RPM, 110 Volt	0.8CC/Rev	Optional BH-7000-00

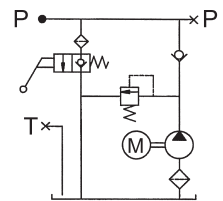


### OPTIONAL EASY ADAPTATION KIT Order: BH-7000-00

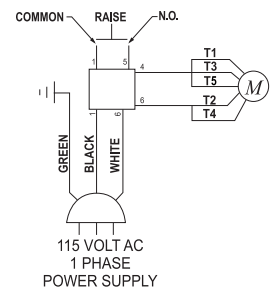
#### CONTENTS

- (1) BH-7000-02 36" Long Hose, 1/4" Hose, 3000 psi, -6 Male End and -6 Swivel Female End
- (1) BH-7000-06 Male 90° Elbow, -6 JIC to -SAE Straight Thread, Zinc Plated Steel
- (1) BH-7000-07 Swivel Nut Branch Tee, -6 Male to -6 Male to -6 Female Swivel Out, Zinc Plated Steel
- (1) BH-7000-08 8" Long, 1/4" Hose, 3000 psi, -6 Male End and -6 Swivel Female End
- (1) BH-7000-09A 24" Cable Tie, 0.36" Wide

#### HYDRAULIC CIRCUIT



#### ELECTRIC CIRCUIT



**SVI International, Inc.**  
155 Harvestore Drive • DeKalb, IL 60115  
**800-321-8173 • 815-748-0200**  
[www.sviinternational.com](http://www.sviinternational.com)

BALTIMORE • CHICAGO • LOS ANGELES

The #1 Source for Auto Lift Power Units!

## BH-7003-01 Series - Single Phase Import VIBO Power Unit



Alternative to SVI's BH-7006A-18 Power Unit

**VIBO** VIBO is a leading offshore enterprise specializing in the research, development and manufacture of hydraulic power units. The shop utilizes state of the art equipment and high grade materials to produce a full line of products including those featured by SVI.

Their professional design team provides hydraulic solutions for the customers it serves, including specialized solutions for custom applications.

VIBO operates with a "Win-Win Development" commitment to provide SVI with excellent service in terms of price, product quality and technical support. Valuing a relationship and the mutual benefit of cooperation with SVI, VIBO is leading the industry as an excellent brand when value pricing with an eye on quality is a top priority.

VIBO—Value / Innovation / Belief / Obligation

### 220 VAC, 3HP, 1PH, 3360 RPM Motor 2.9 Gallon Reservoir

Frame: 56 FR

Max Amps: 220 VAC 12

Pump: 1.8 GPM@2200 PSI

Maximum Run Time: 75 Seconds

Pressure / Return Port Size: 9/16" SAE

Part #	Pressure Relief Valve (psi/bar)	Motor	Pump	Easy Adaptation Kit
BH-7003-01	2610 psi / 180 bar	220 VAC, 3HP, 1PH, 3360 RPM	2.0CC/Rev	Optional BH-7000-00



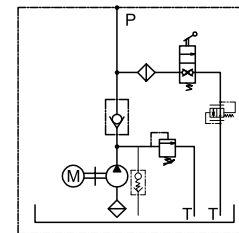
### OPTIONAL EASY ADAPTATION KIT

Order: BH-7000-00

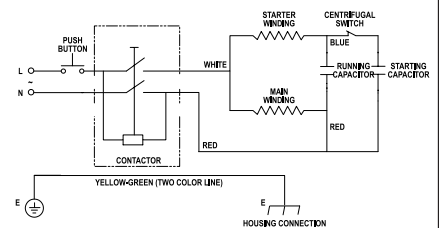
#### CONTENTS

- (1) BH-7000-02 36" Long Hose, 1/4" Hose, 3000 psi, -6 Male End and -6 Swivel Female End
- (1) BH-7000-06 Male 90° Elbow, -6 JIC to -SAE Straight Thread, Zinc Plated Steel
- (1) BH-7000-07 Swivel Nut Branch Tee, -6 Male to -6 Male to -6 Female Swivel Out, Zinc Plated Steel
- (1) BH-7000-08 8" Long, 1/4" Hose, 3000 psi, -6 Male End and -6 Swivel Female End
- (1) BH-7000-09A 24" Cable Tie, 0.36" Wide

### HYDRAULIC CIRCUIT



### ELECTRICAL CIRCUIT



SVI—Service • Value • Innovation



**SVI International, Inc.**

155 Harvestore Drive • DeKalb, IL 60115

**800-321-8173 • 815-748-0200**

[www.sviinternational.com](http://www.sviinternational.com)

BALTIMORE • CHICAGO • LOS ANGELES



The #1 Source for Auto Lift Power Units!



## BH-7003-02 - Single Phase Import VIBO Power Unit



Alternative to SVI's BH-7006-08-18 Power Unit

**VIBO** VIBO is a leading offshore enterprise specializing in the research, development and manufacture of hydraulic power units. The shop utilizes state of the art equipment and high grade materials to produce a full line of products including those featured by SVI.

Their professional design team provides hydraulic solutions for the customers it serves, including specialized solutions for custom applications.

VIBO operates with a "Win-Win Development" commitment to provide SVI with excellent service in terms of price, product quality and technical support. Valuing a relationship and the mutual benefit of cooperation with SVI, VIBO is leading the industry as an excellent brand when value pricing with an eye on quality is a top priority.

VIBO—Value / Innovation / Belief / Obligation

### 110 VAC, 1HP, 1PH, 3420 RPM Motor 2.9 Gallon Reservoir

Frame: 56 FR  
Max Amps: 110 VAC 23  
Pump: 1.2 GPM@2200 PSI

Maximum Run Time: 75 Seconds  
Pressure / Return Port Size: 9/16" SAE

Part #	Pressure Relief Valve (psi/bar)	Motor	Pump	Easy Adaptation Kit
BH-7003-02	2610 psi / 180 bar	110 VAC, 1HP, 1PH, 3420 RPM	1.3CC/Rev	Optional BH-7000-00

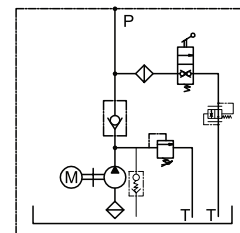


### OPTIONAL EASY ADAPTATION KIT Order: BH-7000-00

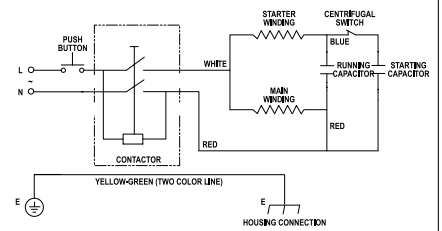
#### CONTENTS

- (1) BH-7000-02 36" Long Hose, 1/4" Hose, 3000 psi, -6 Male End and -6 Swivel Female End
- (1) BH-7000-06 Male 90° Elbow, -6 JIC to -SAE Straight Thread, Zinc Plated Steel
- (1) BH-7000-07 Swivel Nut Branch Tee, -6 Male to -6 Male to -6 Female Swivel Out, Zinc Plated Steel
- (1) BH-7000-08 8" Long, 1/4" Hose, 3000 psi, -6 Male End and -6 Swivel Female End
- (1) BH-7000-09A 24" Cable Tie, 0.36" Wide

### HYDRAULIC CIRCUIT



### ELECTRICAL CIRCUIT



SVI—Service • Value • Innovation



**SVI International, Inc.**  
155 Harvestore Drive • DeKalb, IL 60115  
**800-321-8173 • 815-748-0200**  
[www.sviinternational.com](http://www.sviinternational.com)

BALTIMORE • CHICAGO • LOS ANGELES

The #1 Source for Auto Lift Power Units!



## BH-7003-03 Series - Single Phase Import VIBO Power Unit



Alternative to SVI's BH-7007-01-16 Power Unit

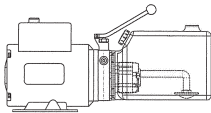
**VIBO** VIBO is a leading offshore enterprise specializing in the research, development and manufacture of hydraulic power units. The shop utilizes state of the art equipment and high grade materials to produce a full line of products including those featured by SVI.

Their professional design team provides hydraulic solutions for the customers it serves, including specialized solutions for custom applications.

VIBO operates with a "Win-Win Development" commitment to provide SVI with excellent service in terms of price, product quality and technical support. Valuing a relationship and the mutual benefit of cooperation with SVI, VIBO is leading the industry as an excellent brand when value pricing with an eye on quality is a top priority.

VIBO – Value / Innovation / Belief / Obligation

Horizontal or Vertical Mount



### 110 VAC, 3/4HP, 1PH, 3360 RPM Motor 1 to 1.5 Gallon Reservoir

NOTE: 1-1/2" Gallon when used Horizontally / 1 Gallon when used Vertically

Frame: 56 FR

Max Amps: 110 VAC 15

Pump: 0.6 GPM@2000 PSI

Maximum Run Time: 75 Seconds

Pressure / Return Port Size: 9/16" SAE

Part #	Pressure Relief Valve (psi/bar)	Motor	Pump	Easy Adaptation Kit
BH-7003-03	2320 psi / 160 bar	110 VAC, 3/4HP, 1PH, 3360 RPM	0.65CC/Rev	Optional BH-7000-00

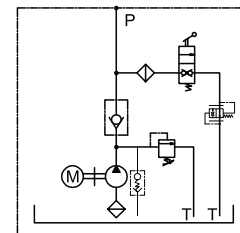


### OPTIONAL EASY ADAPTATION KIT Order: BH-7000-00

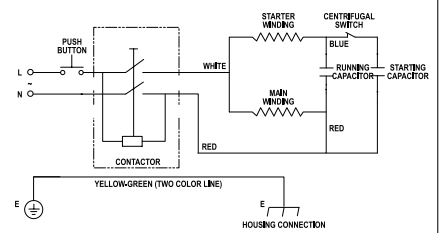
#### CONTENTS

- (1) BH-7000-02 36" Long Hose, 1/4" Hose, 3000 psi, -6 Male End and -6 Swivel Female End
- (1) BH-7000-06 Male 90° Elbow, -6 JIC to -SAE Straight Thread, Zinc Plated Steel
- (1) BH-7000-07 Swivel Nut Branch Tee, -6 Male to -6 Male to -6 Female Swivel Out, Zinc Plated Steel
- (1) BH-7000-08 8" Long, 1/4" Hose, 3000 psi, -6 Male End and -6 Swivel Female End
- (1) BH-7000-09A 24" Cable Tie, 0.36" Wide

### HYDRAULIC CIRCUIT



### ELECTRICAL CIRCUIT



SVI—Service • Value • Innovation



**SVI International, Inc.**  
155 Harvestore Drive • DeKalb, IL 60115  
**800-321-8173 • 815-748-0200**

[www.sviinternational.com](http://www.sviinternational.com)

BALTIMORE • CHICAGO • LOS ANGELES