



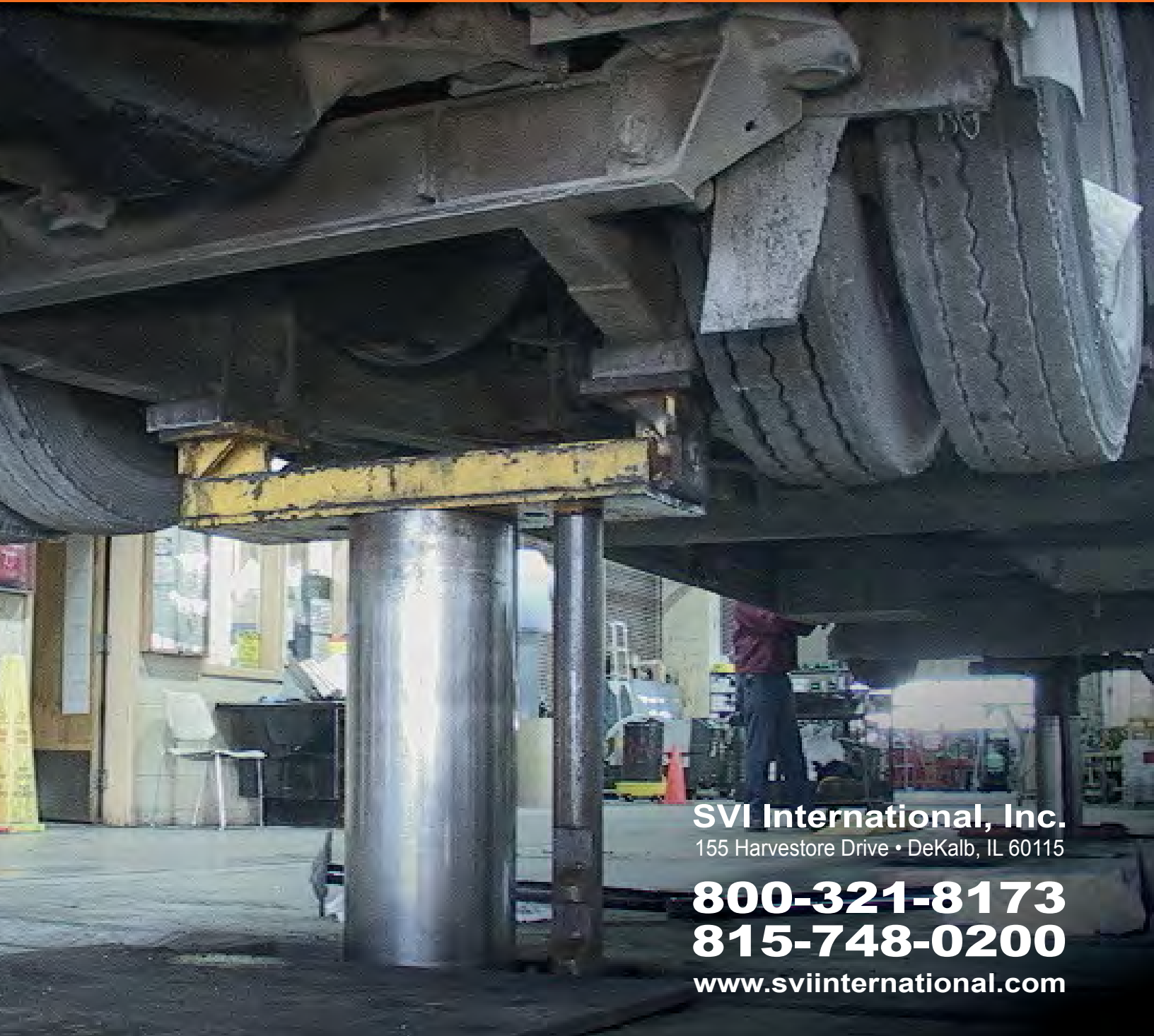
Lift Replacement Sections

Replacement Cylinder Assembly Kits
& Sections for Front & Rear Lifts

DIRECTFIT™

Automotive Shop Equipment | Auto Lift Repair Parts

The Industry's Largest Selection of Auto Lift Repair Parts



SVI International, Inc.
155 Harvestore Drive • DeKalb, IL 60115

800-321-8173

815-748-0200

www.sviinternational.com

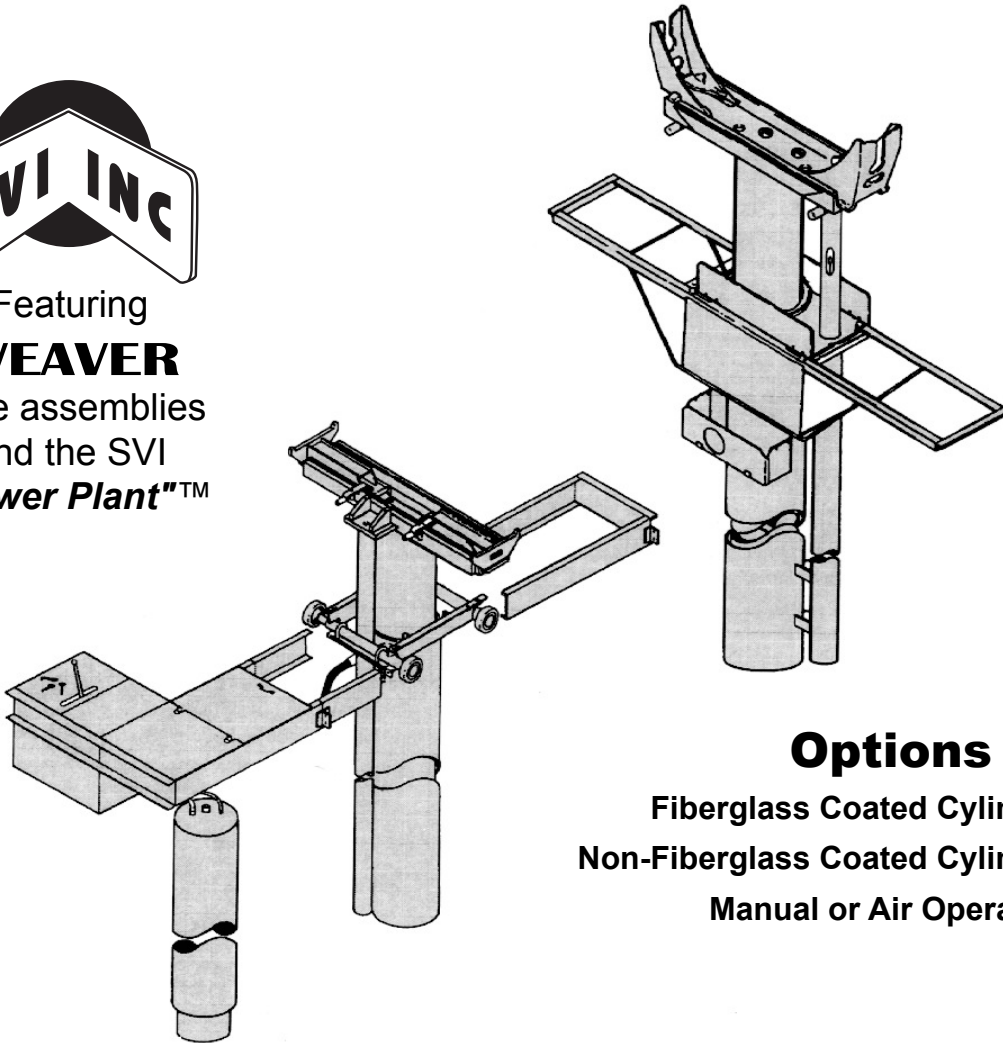
BALTIMORE • CHICAGO • LOS ANGELES



DIRECTFIT™



Featuring
WEAVER
style assemblies
and the SVI
"Power Plant"™



MADE IN USA

Options Available

- Fiberglass Coated Cylinder Assemblies
- Non-Fiberglass Coated Cylinder Assemblies
- Manual or Air Operated Safety Legs

Table of Contents

7-1/2" Front Moveable	3-4
10-5/8" Front Moveable	5
12-5/8" Front Moveable	6
10-5/8" Dual Front Moveable	7
7-1/2" Rear Stationary	8-9
10-5/8" Rear Stationary	10-12
10-5/8" Dual Rear Stationary	13-14
12-5/8" Rear Stationary	15-18
Options & Accessories.....	19-24

P
a
g
e

2

BALTIMORE • CHICAGO • LOS ANGELES

800-321-8173 • 815-748-0200

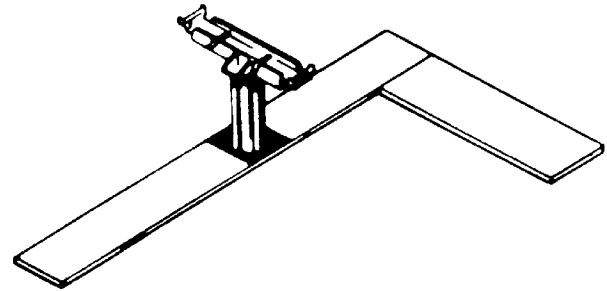
Fax: 800-899-1784 • 815-748-0210

www.sviinternational.com



Replacement Lift Cylinder Assembly Kits

7-1/2" Front Moveable



Front Replacement Kit Consists of:

Front Cylinder Assembly Complete - Choice of Either Fiberglassed or Non-Fiberglassed - Saddle with Standard Adapters - Axle Roller Package - Choice of Either Manual Release (single-position lock) or Air-Operated (multi-position lock) Safety Leg System - Hydraulic Hose Assembly. (Does not include any framework or cover doors)

Compatible with Front:

Weaver: EC-100, EC-101, EC-102, EC-103, EC-202, EC-203

Note: Replacement units purchased for older Weaver lifts may require some minor modification in the field to existing cover plates in order to attach plates to cylinder assembly.

Specifications

Plunger Diameter: 7-1/2"		Oil Displacement: 14 gallons approx.	
Capacity:	Air-Hydraulic	5500 lbs. @	175 psi - i.e. EC-100, EC-102, EC-202
	Electric-Hydraulic	8000 lbs. @	250 psi - i.e. EC-101, EC-103, EC-203
Rise:	70" measured from finished floor to top of adapter		

SVI Kit #	Description (complete cylinder assy kit w/ choices)
SV-102202FM	Cylinder Assy w/ Manual Top Release Single- Position Safety Leg
SV-102202FMG	Cylinder Assy w/ Manual Top Release Single- Position Safety Leg Fiberglassed Cylinder Assembly
SV-102202FT	Cylinder Assy w/ Air-Operated Multi-Position Safety Leg System*
SV-102202FTG	Cylinder Assy w/ Air-Operated Multi-Position Safety Leg System* Fiberglassed Cylinder Assembly

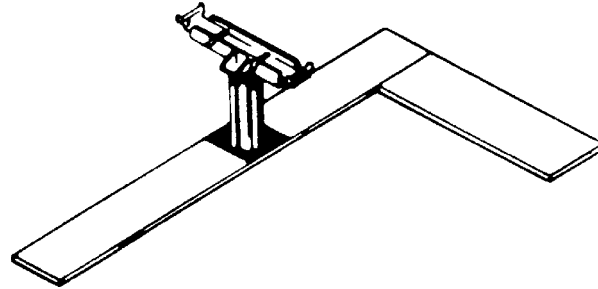
* Air-Operated Multi-Position Safety Leg System Includes Locking Leg, Air Release Valve and Hardware. Minor Field Modification To Existing Control Valve Cover Plate May Be Necessary. Existing Rear Assembly Must Already Be Equipped with Air Operated System or Upgraded with SV-52R. To Upgrade, Rear Must Have Safety Leg Guide Tube.

Call SVI For Front Frame, Covers, Valving, Tank, Ratchet Parts and Special Adapters



Replacement Lift Cylinder Assembly Kits

7-1/2" Front Moveable



Front Replacement Kit Consists of:

Front Cylinder Assembly Complete - Choice of Either Fiberglassed or Non-Fiberglassed - Heavy Duty Saddle with Standard Adapters - Axle Roller Package - Choice of Either Manual Release (single-position lock) or Air-Operated (multi-position lock) Safety Leg System - Hydraulic Hose Assembly. (Does not include any framework or cover doors)

Compatible with Front:

Weaver: EC-107, EC-108

Used in conjunction with 10-5/8" Stationary Rear Section.

Note: Replacement units purchased for older Weaver lifts may require some minor modification in the field to existing cover plates in order to attach plates to cylinder assembly.

Specifications

Plunger Diameter: 7-1/2"		Oil Displacement: 14 gallons approx.	
Capacity:	Air-Hydraulic	5500 lbs. @ 175 psi - i.e. EC-107	
	Electric-Hydraulic	8000 lbs. @ 250 psi - i.e. EC-108	
Rise:	70" measured from finished floor to top of adapter		

SVI Kit #	Description (Complete Cylinder Assembly Kit with Choices)
SV-107108FM	Cylinder Assembly w/ Manual Top Release Single- Position Safety Leg
SV-107108FMG	Cylinder Assembly w/ Manual Top Release Single- Position Safety Leg Fiberglassed Cylinder Assembly
SV-107108FT	Cylinder Assembly w/ Air-Operated Multi-Position Safety Leg System*
SV-107108FTG	Cylinder Assembly w/ Air-Operated Multi-Position Safety Leg System* Fiberglassed Cylinder Assembly

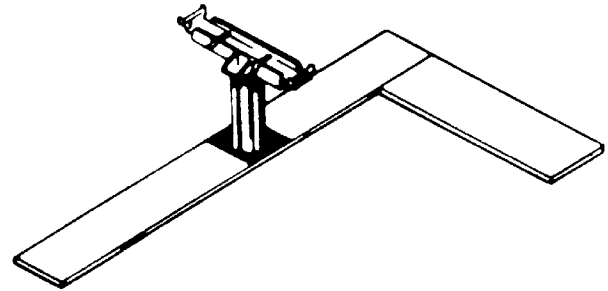
* Air-Operated Multi-Position Safety Leg System Includes Locking Leg, Air Release Valve and Hardware. Minor Field Modification To Existing Control Valve Cover Plate May Be Necessary. Existing Rear Assembly Must Already Be Equipped with Air Operated System or Upgraded with SV-54R. To Upgrade, Rear Must Have Safety Leg Guide Tube.

Call SVI For Front Frame, Covers, Valving, Tank, Ratchet Parts and Special Adapters



Replacement Lift Cylinder Assembly Kits

10-5/8" Front Moveable



Front Replacement Kit Consists of:

Front Cylinder Assembly Complete - Choice of Either Fiberglassed or Non-Fiberglassed - Saddle with Standard Adapters - Axle Roller Package - Choice of Either Manual Release (single-position lock) or Air-Operated (multi-position lock) Safety Leg System - Hydraulic Hose Assembly. (Does not include any framework or cover doors)

Compatible with Front:

Weaver: EC-105, EC-106, MC-301

Rotary: AT70H, AT70E, AT1012E, FM10, FM10ML

Note: Replacement units purchased for Rotary and older Weaver lifts may require some minor modification in the field to existing cover plates in order to attach plates to cylinder assembly.

Specifications

Plunger Diameter: 10-5/8"		Oil Displacement: 25 gallons approx.	
Capacity:	Air-Hydraulic	12,000 lbs. @ 175 psi	- i.e. EC-105, AT70H
	Electric-Hydraulic	18,000 lbs. @ 250 psi	- i.e. EC-106, MC-301, AT70E, 1012E
Rise:	66" measured from finished floor to top of adapter		

SVI Kit #	Description (complete cylinder assy kit w/ choices)
SV-105106FM	Cylinder Assy. w/ Manual Top Release Single-Position Safety Leg
SV-105106FMG	Cylinder Assy. w/ Manual Top Release Single-Position Safety Leg Fiberglassed Cylinder Assembly
SV-105106FT	Cylinder Assy. w/ Air-Operated Multi-Position Safety Leg System*
SV-105106FTG	Cylinder Assy. w/ Air-Operated Multi-Position Safety Leg System* Fiberglassed Cylinder Assembly

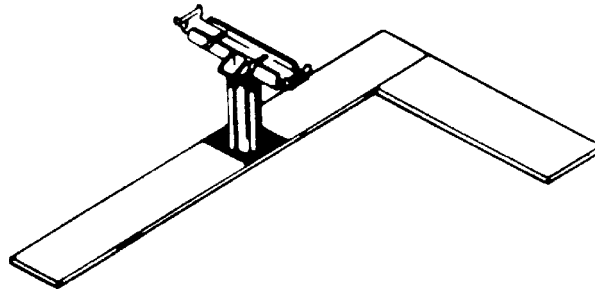
* Air-Operated Multi-Position Safety Leg System Includes Locking Leg, Air Release Valve and Hardware. Minor Field Modification To Existing Control Valve Cover Plate May Be Necessary. Existing Rear Assembly Must Already Be Equipped with Air Operated System or Upgraded with SV-56R. To Upgrade, Rear Must Have Safety Leg Guide Tube.

Call SVI For Front Frame, Covers, Valving, Tank, Ratchet Parts and Special Adapters



Replacement Lift Cylinder Assembly Kits

12-5/8" Front Moveable



Front Replacement Kit Consists of:

Front Cylinder Assembly Complete - Choice of Either Fiberglassed or Non-Fiberglassed - Saddle with Standard Adapters - Axle Roller Package - Air-Operated (multi-position lock) Safety Leg System - Hydraulic Hose Assembly. (Does not include any framework or cover doors.)

Compatible with Front:

Weaver: MC-320

Note: Replacement units purchased for older Weaver lifts may require some minor modification in the field to existing cover plates in order to attach plates to cylinder assembly.

Specifications

Plunger Diameter: 12-5/8"		Oil Displacement: 36 gallons approx.	
Capacity:	Air-Hydraulic	15,000 lbs.	@ 175 psi
	Electric-Hydraulic	25,000 lbs.	@ 250 psi
Rise:	62-1/4" measured from finished floor to top of adapter		

SVI Kit #	Description (complete cylinder assy kit w/ choices)
SV-320T	Cylinder Assy. w/ Air-Operated Multi-Position Safety Leg System*
SV-320TG	Cylinder Assy. w/ Air-Operated Multi-Position Safety Leg System* Fiberglassed Cylinder Assembly

* Air-Operated Multi-Position Safety Leg System Includes Locking Leg, Air Release Valve and Hardware. Minor Field Modification To Existing Control Valve Cover Plate May Be Necessary. Existing Rear Assembly Must Already Be Equipped with Air Operated System.

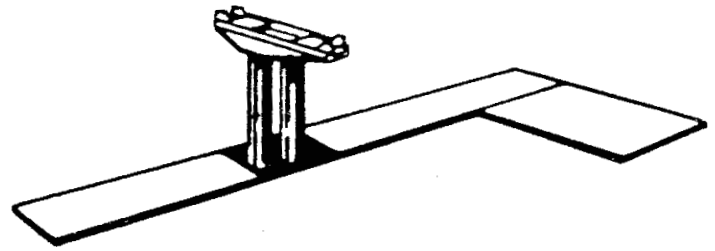
Call SVI For Front Frame, Covers, Valving, Tank, Ratchet Parts and Special Adapters



Replacement Lift Cylinder Assembly Kits

10-5/8" Dual Front Moveable

for use with non-recessed front frames.



Front Replacement Kit Consists of:

Dual Front Cylinder Assembly Complete - Choice of Either Fiberglassed or Non-Fiberglassed
 - Dual Saddle with Standard Adapters - Axle Roller Package - Air-Operated (multi-position lock)
 Safety Leg System - Hydraulic Hose Assembly. (Does not include any framework or cover doors)

Compatible with Front:

Weaver: MC-306

Rotary: Will fit front pits of Rotary lifts and can be used to double lifting capacity.

Note: Replacement units purchased for Rotary and older Weaver lifts may require some minor modification in the field to existing cover plates in order to attach plates to cylinder assembly.

Specifications

Plunger Diameter: (2) 10-5/8"	Oil Displacement: 50 gallons approx.
Capacity:	Electric-Hydraulic 36,000 lbs. @ 250 psi
Rise:	66" measured from finished floor to top of adapter

SVI Kit #	Description (complete cylinder assy. kit w/ choices)
SV-306T	Cylinder Assy. w/ Air-Operated Multi-Position Safety Leg System*
SV-306TG	Cylinder Assy. w/ Air-Operated Multi-Position Safety Leg System* Fiberglassed Cylinder Assembly

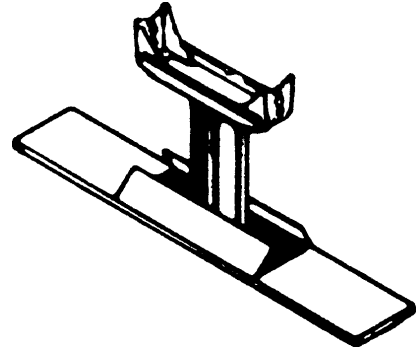
* Air-Operated Multi-Position Safety Leg System Includes Locking Leg, Air Release Valve and Hardware. Minor Field Modification To Existing Control Valve Cover Plate May Be Necessary. Existing Rear Assembly Must Already Be Equipped with Air Operated System or Upgraded. To Upgrade, Rear Must Have Safety Leg Guide Tube.

Call SVI For Front Frame, Covers, Valving, Tank, Ratchet Parts and Special Adapters



Replacement Lift Cylinder Assembly Kits

7-1/2" Rear Stationary



Rear Replacement Section Consists of:

Rear Cylinder Assembly Complete - Choice of Either Fiberglassed or Non-Fiberglassed - Rear Frame Package with Wheel Chocks, Cover Doors and Conduit and Front Form - Saddle with Standard Axle Engaging Adapters - Choice of Either Manual Release (single-position lock) or Air-Operated (multi-position lock) Safety Leg System.

Compatible with Rear:

Weaver: EC-100, EC-101, EC-102, EC-103

Specifications

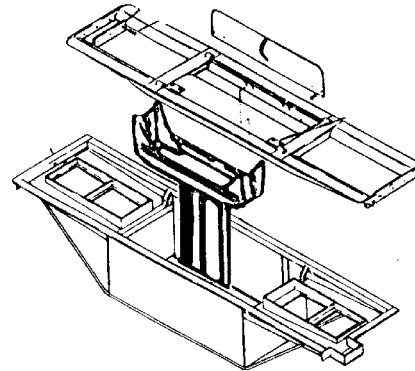
Plunger Diameter: 7-1/2"		Oil Displacement: 14 gallons approx.	
Capacity:	Air-Hydraulic	5500 lbs. @	175 psi - i.e. EC-100, EC-102
	Electric-Hydraulic	8000 lbs. @	250 psi - i.e. EC-101, EC-103
Rise:	74" measured from finished floor to top of adapter		

SVI Kit Number	Description (complete cylinder assy. section w/ choices)
SV-102RM	Cylinder Assy. w/ Manual Top Release Single-Position Safety Leg
SV-102RMG	Cylinder Assy. w/ Manual Top Release Single-Position Safety Leg Fiberglassed Cylinder Assembly
SV-102RT	Cylinder Assy. w/ Air-Operated Multi-Position Safety Leg System*
SV-102RTG	Cylinder Assy. w/ Air-Operated Multi-Position Safety Leg System* Fiberglassed Cylinder Assembly

* Air-Operated Multi-Position Safety Leg System Includes Locking Leg, Air Release Valve and Hardware. Minor Field Modification To Existing Control Valve Cover Plate May Be Necessary. Existing Front Assembly Must Already be Equipped with Air Operated System or Upgraded with SV-52F. To Upgrade, Front Must have Safety Leg Guide Tube.

Replacement Lift Cylinder Assembly Kits

7-1/2" Rear Stationary



Rear Replacement Section Consists of:

Rear Cylinder Assembly Complete - Choice of Either Fibreglassed or Non-Fibreglassed - Rear Frame Package with Cover Doors and Conduit and Front Form - Special Saddle with Wheel Engaging or Axle Engaging Option - Choice of Either Manual Release (single-position lock) or Air-Operated (multi-position lock) Safety Leg System.

Compatible with Rear:

Weaver: EC-202, EC-203



Specifications

Plunger Diameter: 7-1/2"		Oil Displacement: 14 gallons approx.
Capacity:	Air-Hydraulic	5500 lbs. @ 175 psi - i.e. EC-202
	Electric-Hydraulic	8000 lbs. @ 250 psi - i.e. EC-203
Rise:	74" measured from finished floor to top of adapter	

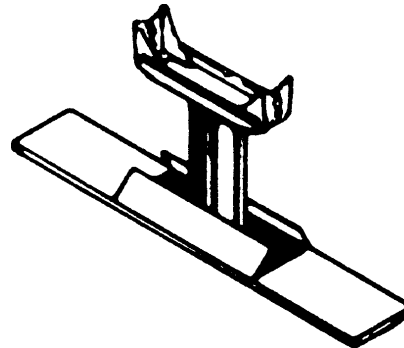
SVI Kit #	Description (complete cylinder assy. section w/ choices)
SV-202RM	Cylinder Assy. w/ Manual Top Release Single-Position Safety Leg
SV-202RMG	Cylinder Assy. w/ Manual Top Release Single-Position Safety Leg Fibreglassed Cylinder Assembly
SV-202RT	Cylinder Assy. w/ Air-Operated Multi-Position Safety Leg System*
SV-202RTG	Cylinder Assy. w/ Air-Operated Multi-Position Safety Leg System* Fibreglassed Cylinder Assembly

* Air-Operated Multi-Position Safety Leg System Includes Locking Leg, Air Release Valve and Hardware. Minor Field Modification To Existing Control Valve Cover Plate May Be Necessary. Existing Front Assembly Must Already be Equipped with Air Operated System or Upgraded with SV-52F. To Upgrade, Front Must have Safety Leg Guide Tube.



Replacement Lift Cylinder Assembly Kits

10-5/8" Rear Stationary



Rear Replacement Section Consists of:

Rear Cylinder Assembly Complete - Choice of Either Fiberglassed or Non-Fiberglassed - Rear Frame Package with Wheel Chocks, Cover Doors and Conduit and Front Form - Saddle with Standard Axle Engaging Adapters with 49" to 24" width adjustment - Choice of Either Manual Release (single-position lock) or Air-Operated (multi-position lock) Safety Leg System.

Compatible with Rear:

- Weaver:** EC-105, EC-106, MC-302
- Rotary:** AT60H, AT60E, AT70H, AT70E, R10, R10ML
- Globe:** MP-210A, MP-210E
- Western:** AC-810, AC-810E, AC-1010, AC-1010E

Specifications

Plunger Diameter: 10-5/8"		Oil Displacement: 25 gallons approx.	
Capacity:	Air-Hydraulic	12,000 lbs. @ 175 psi	- i.e. EC105, AT60H, AT70H, MP210A, AC810, AC1010
	Electric-Hydraulic	18,000 lbs. @ 250 psi	- i.e. EC106, AT60E, AT70E, MP210E, AC810E, AC1010E
Rise:	69" measured from finished floor to top of adapter		

SVI Kit #	Description (complete cylinder assy. section w/ choices)
SV-105106RM	Cylinder Assy. w/ Manual Top Release Single- Position Safety Leg
SV-105106RMG	Cylinder Assy. w/ Manual Top Release Single- Position Safety Leg Fiberglassed Cylinder Assembly
SV-105106RT	Cylinder Assy. w/ Air-Operated Multi-Position Safety Leg System*
SV-105106RTG	Cylinder Assy. w/ Air-Operated Multi-Position Safety Leg System* Fiberglassed Cylinder Assembly

* Air-Operated Multi-Position Safety Leg System Includes Locking Leg, Air Release Valve and Hardware. Minor Field Modification To Existing Control Valve Cover Plate May Be Necessary. Existing Front Assembly Must Already be Equipped with Air Operated System or Upgraded with SV-56F. To Upgrade, Front Must have Safety Leg Guide Tube.

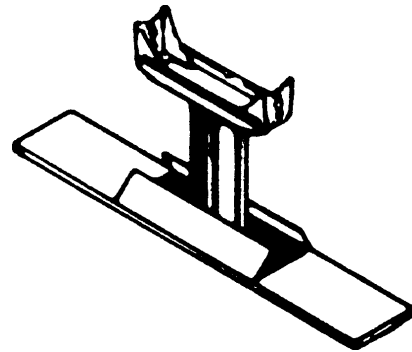
P
a
g
e

10



Replacement Lift Cylinder Assembly Kits

10-5/8" Rear Stationary



Rear Replacement Section Consists of:

Rear Cylinder Assembly Complete - Choice of Either Fiberglassed or Non-Fiberglassed - Rear Frame Package with Wheel Chocks, Cover Doors, Conduit Form and Front Form - Saddle with Standard Axle Engaging Adapters with 44" to 24" width adjustment - Choice of Either Manual Release (single-position lock) or Air-Operated (multi-position lock) Safety Leg System.

Compatible with Rear:

Weaver: EC-105BM, EC-106BM, EC-107, EC-108, MC-303

Specifications

Plunger Diameter: 10-5/8"		Oil Displacement: 25 gallons approx.	
Capacity:	Air-Hydraulic	12,000 lbs. @ 175 psi	- i.e. EC107, EC-105BM
	Electric-Hydraulic	18,000 lbs. @ 250 psi	- i.e. EC108, EC-106BM, MC-303
Rise:	69" measured from finished floor to top of adapter		

SVI Kit #	Description (complete cylinder assy. section w/ choices)
SV-107108RM	Cylinder Assy. w/ Manual Top Release Single-Position Safety Leg
SV-107108RMG	Cylinder Assy. w/ Manual Top Release Single- Position Safety Leg Fiberglassed Cylinder Assembly
SV-107108RT	Cylinder Assy. w/ Air-Operated Multi-Position Safety Leg System*
SV-107108RTG	Cylinder Assy. w/ Air-Operated Multi-Position Safety Leg System* Fiberglassed Cylinder Assembly

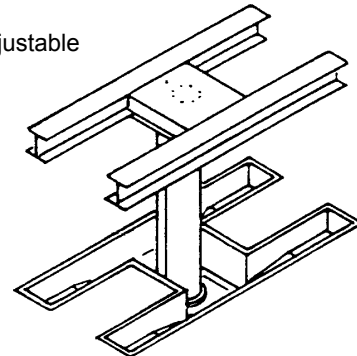
* Air-Operated Multi-Position Safety Leg System Includes Locking Leg, Air Release Valve and Hardware. Minor Field Modification To Existing Control Valve Cover Plate May Be Necessary. Existing Front Assembly Must Already be Equipped with Air Operated System or Upgraded with SV-52F or SV-56F. To Upgrade, Front Must have Safety Leg Guide Tube.



Replacement Lift Cylinder Assembly Kits

10-5/8" Rear Stationary

Note: supplied with adjustable saddles and adapters.

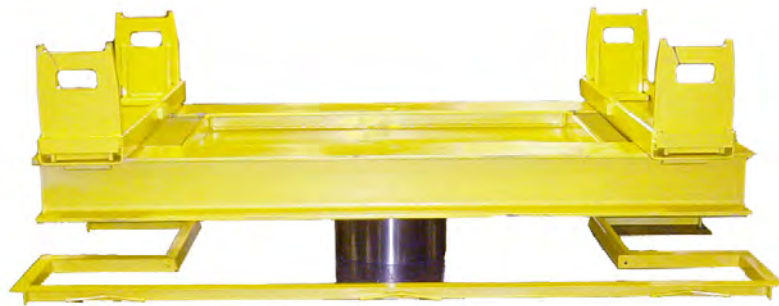


Rear Replacement Section Consists of:

Rear Cylinder Assembly Complete - Choice of Either Fiberglassed or Non-Fiberglassed I-Beam style superstructure equipped with saddles and adapters to engage vehicle axles, suspension or cross frame members - Choice of Either Manual Release (single-position lock) or Air-Operated (multi-position lock) Safety Leg System.

Compatible with Rear:

Rotary: AT/RT70DSE



Specifications

Plunger Diameter: 10-5/8"		Oil Displacement: 25 gallons approx.	
Capacity:	Air-Hydraulic	12,000 lbs.	@ 175 psi - i.e.
	Electric-Hydraulic	18,000 lbs.	@ 250 psi - i.e.
Rise:	69" measured from finished floor to top of adapter		

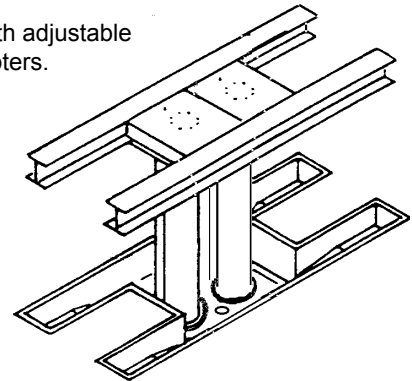
SVI Kit #	Description (complete cylinder assy. section w/ choices)
SV-337M	Cylinder Assy. w/ Manual Top Release Single- Position Safety Leg
SV-337MG	Cylinder Assy. w/ Manual Top Release Single- Position Safety Leg Fiberglassed Cylinder Assembly
SV-337T	Cylinder Assy. w/ Air-Operated Multi-Position Safety Leg System*
SV-337TG	Cylinder Assy. w/ Air-Operated Multi-Position Safety Leg System* Fiberglassed Cylinder Assembly

* Air-Operated Multi-Position Safety Leg System Includes Locking Leg, Air Release Valve and Hardware. Minor Field Modification To Existing Control Valve Cover Plate May Be Necessary. Existing Front Assembly Must Already be Equipped with Air Operated System or Upgraded with SV-52F or SV-56F. To Upgrade, Front Must have Safety Leg Guide Tube.



Replacement Lift Cylinder Assembly Kits

Note: supplied with adjustable saddles and adapters.



10-5/8" Dual Rear Stationary (in Tandem)

Rear Replacement Section Consists of:

Rear Cylinder Assembly Complete - Fiberglassed in tandem casings - I-Beam style superstructure equipped with saddles and adapters to engage vehicle axles, suspension or cross frame members - Choice of Either Manual Release (single-position lock) or Air-Operated (multi-position lock) Safety Leg System.

Compatible with Rear:

Rotary: AT/RT10210DSE

Specifications

Plunger Diameter: 10-5/8"		Oil Displacement: 50 gallons approx.	
Capacity:	Air-Hydraulic	24,000 lbs.	@ 175 psi - i.e.
	Electric-Hydraulic	36,000 lbs.	@ 250 psi - i.e.
Rise:	69" measured from finished floor to top of adapter		

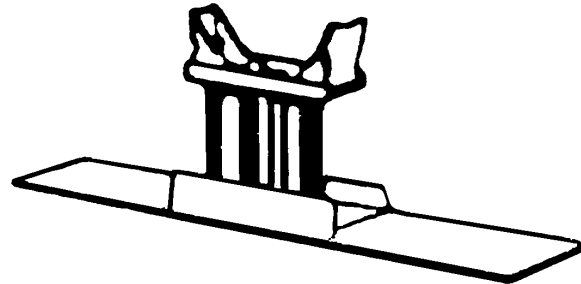
SVI Kit #	Description (complete cylinder assy. section w/ choices)
SV-339MG	Cylinder Assy. w/ Manual Top Release Single-Position Safety Leg Fiberglassed Cylinder Assembly
SV-339TG	Cylinder Assy. w/ Air-Operated Multi-Position Safety Leg System* Fiberglassed Cylinder Assembly

* Air-Operated Multi-Position Safety Leg System Includes Locking Leg, Air Release Valve and Hardware. Minor Field Modification To Existing Control Valve Cover Plate May Be Necessary. Existing Front Assembly Must Already be Equipped with Air Operated System or Upgraded with SV-52F or SV-56F. To Upgrade, Front Must have Safety Leg Guide Tube.



Replacement Lift Cylinder Assembly Kits

10-5/8" Dual Rear Stationary



Rear Replacement Section Consists of:

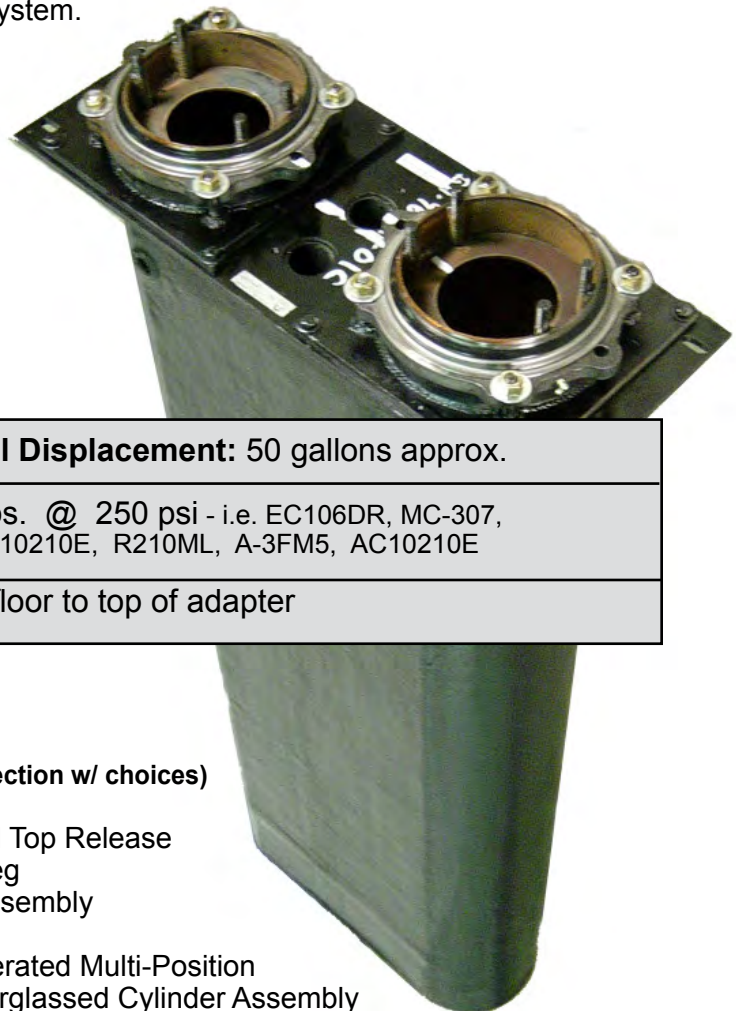
Dual Rear Cylinder Assembly Complete - Choice of Either Fiberglassed or Non-Fiberglassed - Rear Frame Package with Wheel Chocks, Cover Doors and Conduit and Front Form - Saddle with Standard Axle Engaging Adapters with 49" to 24" width adjustment - Manual Release or Air-Operated (multi-position lock) Safety Leg System.

Compatible with Rear:

- Weaver:** EC-106DR, MC-307
- Rotary:** AT10210E, R210ML
- Gilbarco:** A-3FM5
- Globe:** 310E
- Western:** AC-10210E

Specifications

Plunger Diameter: (2) 10-5/8"	Oil Displacement: 50 gallons approx.
Capacity:	Electric-Hydraulic 36,000 lbs. @ 250 psi - i.e. EC106DR, MC-307, AT10210E, R210ML, A-3FM5, AC10210E
Rise:	69" measured from finished floor to top of adapter



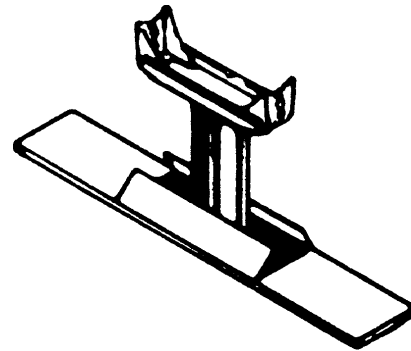
SVI Kit #	Description
	(complete cylinder assy. section w/ choices)
SV-307MG	Cylinder Assy. w/ Manual Top Release Single-Position Safety Leg Fiberglassed Cylinder Assembly
SV-307TG	Cylinder Assy. w/ Air-Operated Multi-Position Safety Leg System* Fiberglassed Cylinder Assembly

* Air-Operated Multi-Position Safety Leg System Includes Locking Leg, Air Release Valve and Hardware. Minor Field Modification To Existing Control Valve Cover Plate May Be Necessary. Existing Front Assembly Must Already be Equipped with Air Operated System or Upgraded with SV-56F. To Upgrade, Front Must have Safety Leg Guide Tube.



Replacement Lift Cylinder Assembly Kits

12-5/8" Rear Stationary



Rear Replacement Section Consists of:

Rear Cylinder Assembly Complete - Choice of Either Fiberglassed or Non-Fiberglassed Rear Frame Package with Wheel Chocks, Cover Doors and Conduit and Front Form - Saddle with Standard Axle Engaging Adapters with 49" to 24" width adjustment - Choice of Either Manual Release (single-position lock) or Air-Operated (multi-position lock) Safety Leg System.

Compatible with Rear:

- Weaver:** MC-330
- Rotary:** AT1012E, R12, R12ML
- Globe:** MP-1012E
- Western:** AC-1012E

Specifications

Plunger Diameter: 12-5/8"		Oil Displacement: 38 gallons approx.	
Capacity:	Air-Hydraulic	15,000 lbs. @	175 psi
	Electric-Hydraulic	25,000 lbs. @	250 psi
Rise:	69" measured from finished floor to top of adapter		

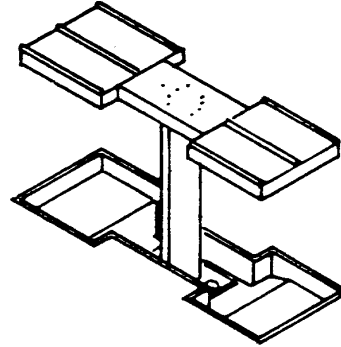
SVI Kit #	Description (complete cylinder assy. section w/ choices)
SV-330M	Cylinder Assy. w/ Manual Top Release Single-Position Safety Leg
SV-330MG	Cylinder Assy. w/ Manual Top Release Single-Position Safety Leg Fiberglassed Cylinder Assembly
SV-330T	Cylinder Assy. w/ Air-Operated Multi-Position Safety Leg System*
SV-330TG	Cylinder Assy. w/ Air-Operated Multi-Position Safety Leg System* Fiberglassed Cylinder Assembly

* Air-Operated Multi-Position Safety Leg System Includes Locking Leg, Air Release Valve and Hardware. Minor Field Modification To Existing Control Valve Cover Plate May Be Necessary. Existing Front Assembly Must Already be Equipped with Air Operated System or Upgraded with SV-56F. To Upgrade, Front Must have Safety Leg Guide Tube.



Replacement Lift Cylinder Assembly Kits

12-5/8" Rear Stationary



Rear Replacement Section Consists of:

Rear Cylinder Assembly Complete - Choice of Either Fiberglassed or Non-Fiberglassed Dual dish wheel chock superstructure (wheel engaging) - Choice of Either Manual Release (single-position lock) or Air-Operated (multi-position lock) Safety Leg System.

Compatible with Rear:

Weaver: MC-331

Specifications

Plunger Diameter: 12-5/8"		Oil Displacement: 38 gallons approx.	
Capacity:	Air-Hydraulic	15,000 lbs. @	175 psi
	Electric-Hydraulic	25,000 lbs. @	250 psi
Rise:	69" measured from finished floor to top of adapter		

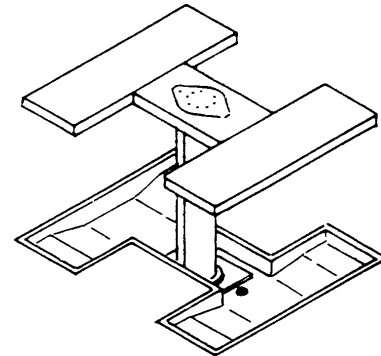
SVI Kit #	Description (complete cylinder assy. section w/ choices)
SV-331M	Cylinder Assy. w/ Manual Top Release Single-Position Safety Leg
SV-331MG	Cylinder Assy. w/ Manual Top Release Single-Position Safety Leg Fiberglassed Cylinder Assembly
SV-331T	Cylinder Assy. w/ Air-Operated Multi-Position Safety Leg System*
SV-331TG	Cylinder Assy. w/ Air-Operated Multi-Position Safety Leg System* Fiberglassed Cylinder Assembly

* Air-Operated Multi-Position Safety Leg System Includes Locking Leg, Air Release Valve and Hardware. Minor Field Modification To Existing Control Valve Cover Plate May Be Necessary. Existing Front Assembly Must Already be Equipped with Air Operated System or Upgraded with SV-56F. To Upgrade, Front Must have Safety Leg Guide Tube.



Replacement Lift Cylinder Assembly Kits

12-5/8" Rear Stationary



Rear Replacement Section Consists of:

Rear Cylinder Assembly Complete - Choice of Either Fiberglassed or Non-Fiberglassed - Wheel engaging by means of drive on runways - Choice of Either Manual Release (single-position lock) or Air-Operated (multi-position lock) Safety Leg System.

Compatible with Rear:

Weaver: MC-333

Specifications

Plunger Diameter: 12-5/8"		Oil Displacement: 38 gallons approx.	
Capacity:	Air-Hydraulic	15,000 lbs.	@ 175 psi
	Electric-Hydraulic	25,000 lbs.	@ 250 psi
Rise:	69" measured from finished floor to top of adapter		

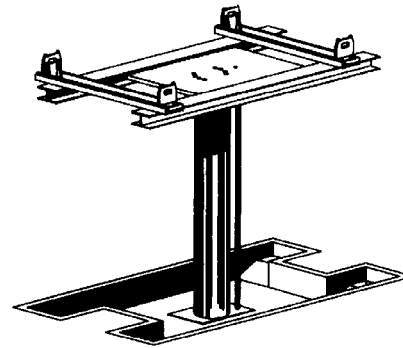
SVI Kit #	Description (complete cylinder assy. section w/ choices)
SV-333M	Cylinder Assy. w/ Manual Top Release Single-Position Safety Leg
SV-333MG	Cylinder Assy. w/ Manual Top Release Single-Position Safety Leg Fiberglassed Cylinder Assembly
SV-333T	Cylinder Assy. w/ Air-Operated Multi-Position Safety Leg System*
SV-333TG	Cylinder Assy. w/ Air-Operated Multi-Position Safety Leg System* Fiberglassed Cylinder Assembly

* Air-Operated Multi-Position Safety Leg System Includes Locking Leg, Air Release Valve and Hardware. Minor Field Modification To Existing Control Valve Cover Plate May Be Necessary. Existing Front Assembly Must Already be Equipped with Air Operated System or Upgraded with SV-56F. To Upgrade, Front Must have Safety Leg Guide Tube.



Replacement Lift Cylinder Assembly Kits

12-5/8" Front/Rear Stationary



Front/Rear Replacement Section Consists of:

Front/Rear Cylinder Assembly Complete - Choice of Either Fiberglassed or Non-Fiberglassed - I-Beam style superstructure equipped with adjustable saddles and adapters to engage vehicle axles, suspension or cross frame member - Choice of Either Manual Release (single-position lock) or Air-Operated (multi-position lock) Safety Leg System. This section can be used as either front or rear or both.

Compatible with Front/Rear:

- Globe:** D-SH-1012E, D-SH-212E
- Rotary:** Rear of AT1012DS H&E
- Weaver:** MC-335

Specifications

Plunger Diameter: 12-5/8"		Oil Displacement: 38 gallons approx.	
Capacity:	Air-Hydraulic	15,000 lbs.	@ 175 psi
	Electric-Hydraulic	25,000 lbs.	@ 250 psi
Rise:	69" measured from finished floor to top of adapter		

SVI Kit #	Description (complete cylinder assy. section w/ choices)
SV-335M	Cylinder Assy. w/ Manual Top Release Single-Position Safety Leg
SV-335MG	Cylinder Assy. w/ Manual Top Release Single-Position Safety Leg Fiberglassed Cylinder Assembly
SV-335T	Cylinder Assy. w/ Air-Operated Multi-Position Safety Leg System*
SV-335TG	Cylinder Assy. w/ Air-Operated Multi-Position Safety Leg System* Fiberglassed Cylinder Assembly

* Air-Operated Multi-Position Safety Leg System Includes Locking Leg, Air Release Valve and Hardware. Minor Field Modification To Existing Control Valve Cover Plate May Be Necessary. Existing Front Assembly Must Already be Equipped with Air Operated System or Upgraded with SV-56F. To Upgrade, Front Must have Safety Leg Guide Tube.



Options and Accessories for Front & Rear Lifts

Supreme Value Initiative

Hydraulic Power Units

FEATURES:

- Low Cost
- Simple Design
- Reliable Function
- Universally Available Components
- SAE Type B Pump to Motor Adapter
- High Performance HYBEL Gear Pump*
- Fulflo Hydraulic Bypass Relief Valve
- Parker "Series C" Check Valve*
- Standard and Custom Reservoir Capacities
- Optional Auxiliary Reservoirs Available

Hydraulic Power Units from SVI can be used to power any type of hydraulic cylinders that operate on pressures up to 350 PSI. Applications include heavy duty in-ground automotive, truck and bus service lifts and low pressure, high capacity intermittent use material handling cylinders.

These power units are an ideally suitable replacement or upgrade for any struggling power unit found in use on older fore-and-aft lifts in any bus shop, municipal garage or transit fleet facility. Each power unit reservoir and assembly is built in SVI's DeKalb, Illinois plant using readily available industry standard components. After production, the power units are hydraulically tested for proper operation prior to shipping.

SVI power units are the perfect solution when a new unit is required for any existing conventional fore-and-aft lift, regardless of the make or model number. Whether it is a Western, Joyce, Globe, Gilbarco, Weaver, Rotary, Curtis, SVI or other make of lift—SVI is your Answer!



Magnetic Starters Available!



4 Standard Color Choices!
Coordinate with your shop.

Custom colors available for an additional charge.

-  **Black**
-  **Yellow**
-  **Red**
-  **Blue**



SVI International, Inc.

BALTIMORE • CHICAGO • LOS ANGELES

800-321-8173

www.sviinternational.com

E-Mail: parts@sviintl.com

See Next Page



Options and Accessories for Front & Rear Lifts

60 Hz POWER UNITS

SVI Part #	GPM (LPM)	Operating Pressure Pound/Sq. In. (Bar)	Tank Capacity Gallons (Liters)	Motor Specs		Overall Dimensions		
				HP / kW / Phase	Voltage	Width	Height	Depth
SV-60-1	40 gpm (151 lpm)	250 psi (17.2 bar)	60 gal (227 L)	7.5 hp / 5.5kW 3 Phase	208-230V / 460V, 24.2-22 / 11 A, 1800 RPM	19-1/8" (485 mm)	57" (1450 mm)	38" (965 mm)
SV-61-1	40 gpm (151 lpm)	250 psi (17.2 bar)	120 gal (454. L)	7.5 hp / 5.5kW 3 Phase	208-230V / 460V, 24.2-22 / 11 A, 1800 RPM	30-3/4" (780 mm)	57" (1450 mm)	38" (965 mm)
SV-61-1-1PH	40 gpm (151 lpm)	250 psi (17.2 bar)	120 gal (454. L)	7.5 hp / 5.5kW 1 Phase	208-230V / 460V, 24.2-22 / 11 A, 1800 RPM	30-3/4" (780 mm)	57" (1450 mm)	38" (965 mm)
SV-61-1-575V	40 gpm (151 lpm)	250 psi (17.2 bar)	120 gal (454. L)	7.5 hp / 5.5kW 3 Phase	575V, 7.6A, 1800 RPM	30-3/4" (780 mm)	57" (1450 mm)	38" (965 mm)
SV-62-1	40 gpm (151 lpm)	250 psi (17.2 bar)	170 gal (643.5 L)	7.5 hp / 5.5kW 3 Phase	208-230V / 460V, 21-18.8 / 9.4 A, 1800 RPM	42-1/8" W (1070 mm)	57" (1450 mm)	38" (965 mm)
SV-60-2	40 gpm (151 lpm)	350 psi (24.1 bar)	60 gal (227 L)	10 hp / 7.5kW 3 Phase	208-230V / 460V, 29-26 / 13 A, 1800 RPM	19-1/8" (485 mm)	57" (1450 mm)	39-1/2" (1005 mm)
SV-61-2	40 gpm (151 lpm)	350 psi (24.1 bar)	120 gal (454 L)	10 hp / 7.5kW 3 Phase	208-230V / 460V, 29-26 / 13 A, 1800 RPM	30-3/4" (780 mm)	57" (1450 mm)	39-1/2" (1005 mm)
SV-62-2	40 gpm (151 lpm)	350 psi (24.1 bar)	170 gal (643.5 L)	10 hp / 7.5kW 3 Phase	208-230V / 460V, 29-26 / 13 A, 1800 RPM	42-1/8" W (1070 mm)	57" (1450 mm)	39-1/2" (1005 mm)
SV-60-3	60 gpm (227 lpm)	250 psi (17.2 bar)	60 gal (227 L)	10 hp / 7.5kW 3 Phase	208-230V / 460V, 29-26 / 13 A, 1800 RPM	19-1/8" (485 mm)	57" (1450 mm)	39-1/2" (1005 mm)
SV-61-3	60 gpm (227 lpm)	250 psi (17.2 bar)	120 gal (454 L)	10 hp / 7.5kW 3 Phase	208-230V / 460V, 29-26 / 13 A, 1800 RPM	30-3/4" (780 mm)	57" (1450 mm)	39-1/2" (1005 mm)
SV-62-3	60 gpm (227 lpm)	250 psi (17.2 bar)	170 gal (643.5 L)	10 hp / 7.5kW 3 Phase	208-230V / 460V, 29-26 / 13 A, 1800 RPM	42-1/8" W (1070 mm)	57" (1450 mm)	39-1/2" (1005 mm)
SV-60-4	60 gpm (227 lpm)	350 psi (24.1 bar)	60 gal (227 L)	15 hp / 11.2kW 3 Phase	208-230V / 460V, 46.2-42 / 21 A, 1800 RPM	19-1/8" (485 mm)	57" (1450 mm)	42" (1067 mm)
SV-61-4	60 gpm (227 lpm)	350 psi (24.1 bar)	120 gal (454 L)	15 hp / 11.2kW 3 Phase	208-230V / 460V, 46.2-42 / 21 A, 1800 RPM	30-3/4" (780 mm)	57" (1450 mm)	42" (1067 mm)
SV-62-4	60 gpm (227 lpm)	350 psi (24.1 bar)	170 gal (643.5 L)	15 hp / 11.2kW 3 Phase	208-230V / 460V, 46.2-42 / 21 A, 1800 RPM	42-1/8" W (1070 mm)	57" (1450 mm)	42" (1067 mm)

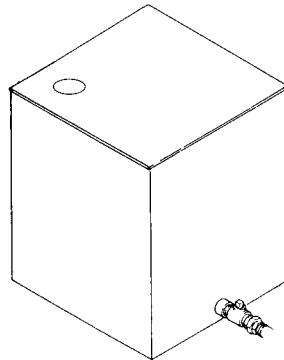
50 Hz POWER UNITS

SVI Part #	GPM (LPM)	Operating Pressure Pound/Sq. In. (Bar)	Tank Capacity Gallons (Liters)	Motor Specs		Overall Dimensions		
				HP / Phase	Voltage	Width	Height	Depth
SV-60-5	40 gpm (151 lpm)	250 psi (17.2 bar)	60 gal (227 L)	7.5 hp / 5.5kW 3 Phase	190-220V / 380V, 29-25 / 14.7 A, 1440 RPM	19-1/8" (485 mm)	57" (1450 mm)	38" (965 mm)
SV-61-5	40 gpm (151 lpm)	250 psi (17.2 bar)	120 gal (454. L)	7.5 hp / 5.5kW 3 Phase	190-220V / 380V, 29-25 / 14.7 A, 1440 RPM	30-3/4" (780 mm)	57" (1450 mm)	38" (965 mm)
SV-62-5	40 gpm (151 lpm)	250 psi (17.2 bar)	170 gal (643.5 L)	7.5 hp / 5.5kW 3 Phase	190-220V / 380V, 29-25 / 14.7 A, 1440 RPM	42-1/8" W (1070 mm)	57" (1450 mm)	38" (965 mm)
SV-60-6	40 gpm (151 lpm)	350 psi (24.1 bar)	60 gal (227 L)	10 hp / 7.5kW 3 Phase	190-220V / 380V, 39-34 / 19.6 A, 1440 RPM	19-1/8" (485 mm)	57" (1450 mm)	39-1/2" (1005 mm)
SV-61-6	40 gpm (151 lpm)	350 psi (24.1 bar)	120 gal (454. L)	10 hp / 7.5kW 3 Phase	190-220V / 380V, 39-34 / 19.6 A, 1440 RPM	30-3/4" (780 mm)	57" (1450 mm)	39-1/2" (1005 mm)
SV-62-6	40 gpm (151 lpm)	350 psi (24.1 bar)	170 gal (643.5 L)	10 hp / 7.5kW 3 Phase	190-220V / 380V, 39-34 / 19.6 A, 1440 RPM	42-1/8" W (1070 mm)	57" (1450 mm)	39-1/2" (1005 mm)
SV-60-7	60 gpm (227 lpm)	250 psi (17.2 bar)	60 gal (227 L)	10 hp / 7.5kW 3 Phase	190-220V / 380V, 39-34 / 19.6 A, 1440 RPM	19-1/8" (485 mm)	57" (1450 mm)	39-1/2" (1005 mm)
SV-61-7	60 gpm (227 lpm)	250 psi (17.2 bar)	120 gal (454. L)	10 hp / 7.5kW 3 Phase	190-220V / 380V, 39-34 / 19.6 A, 1440 RPM	30-3/4" (780 mm)	57" (1450 mm)	39-1/2" (1005 mm)
SV-62-7	60 gpm (227 lpm)	250 psi (17.2 bar)	170 gal (643.5 L)	10 hp / 7.5kW 3 Phase	190-220V / 380V, 39-34 / 19.6 A, 1440 RPM	42-1/8" W (1070 mm)	57" (1450 mm)	39-1/2" (1005 mm)
SV-60-8	60 gpm (227 lpm)	350 psi (24.1 bar)	60 gal (227 L)	15 hp / 11.2kW 3 Phase	190-220V / 380V, 59-51 / 29.4 A, 1440 RPM	19-1/8" (485 mm)	57" (1450 mm)	42" (1067 mm)
SV-61-8	60 gpm (227 lpm)	350 psi (24.1 bar)	120 gal (454. L)	15 hp / 11.2kW 3 Phase	190-220V / 380V, 59-51 / 29.4 A, 1440 RPM	30-3/4" (780 mm)	57" (1450 mm)	42" (1067 mm)
SV-62-8	60 gpm (227 lpm)	350 psi (24.1 bar)	170 gal (643.5 L)	15 hp / 11.2kW 3 Phase	190-220V / 380V, 59-51 / 29.4 A, 1440 RPM	42-1/8" W (1070 mm)	57" (1450 mm)	42" (1067 mm)

Specifications Subject to Change



Options and Accessories for Front & Rear Lifts



Auxiliary Reservoirs:

SVI #	Description
SV-63	60 Gallon Bare Tank - No Mounting Plate
SV-64	120 Gallon Bare Tank - No Mounting Plate
SV-65	170 Gallon Bare Tank - No Mounting Plate

Electric Motors:

SVI #	Description
SV-37*	Motor 7-1/2 H.P. - 230/460 VAC - 3 Phase - 60 Cycle - 1800 RPM
SV-40*	Motor 7-1/2 H.P. - 200/208 VAC - 3 Phase - 60 Cycle - 1800 RPM

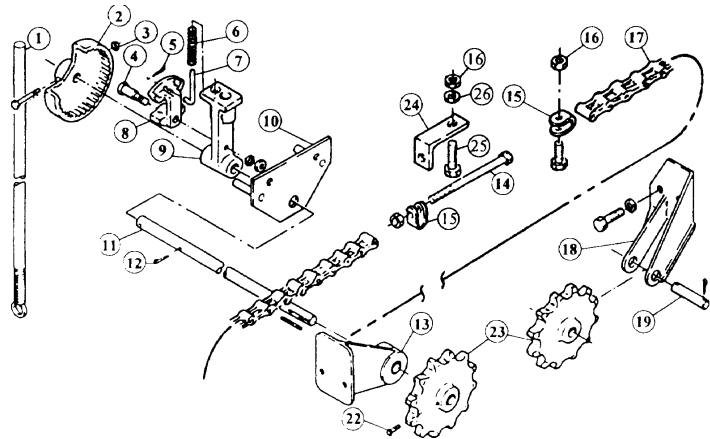
* These motors for replacement on original Weaver, Challenger, Rotary, etc. supplied power unit using 213T frame. Not for use on an SVI **Power Plant™** power unit.

Magnetic Starters:

SVI #	Description
SV-42	Magnetic Starter for 7-1/2 H.P. - 208/230/460 VAC - 3 Phase - Electric Motor. NEMA 1 Enclosure with Push Button "Start Stop" on the Cover. (specify motor voltage)
SV-43	Magnetic Starter for 7-1/2 H.P. - 208/230/460 VAC - 3 Phase - Electric Motor. NEMA 1 Enclosure with Push Button "Start Stop" on the Cover. (specify motor voltage) Also Includes Step Down Transformer to 115 Volts for Remote Push Button Station Where Needed.

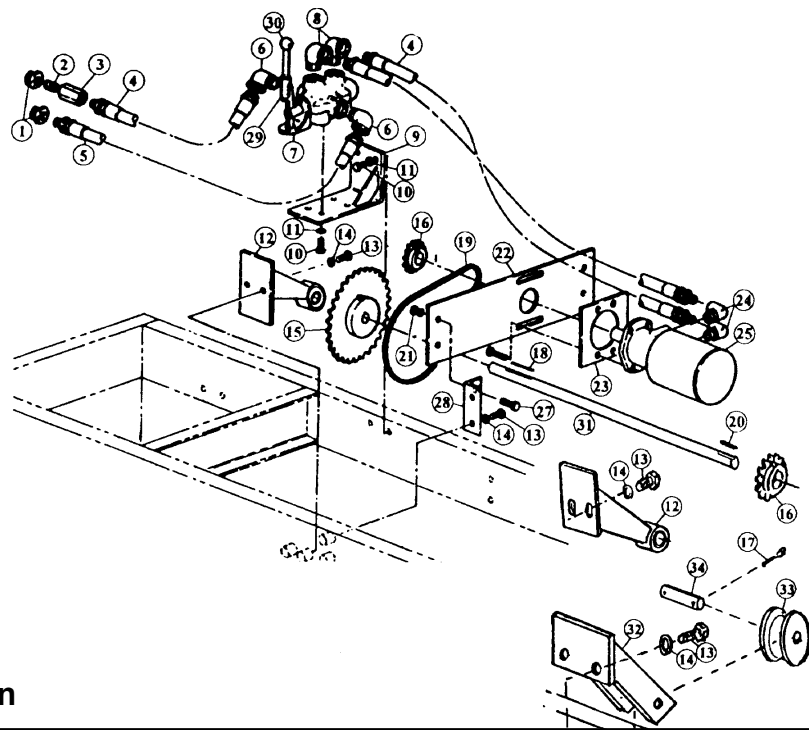
Options and Accessories for Front & Rear Lifts

Front Cylinder Ratchet Kits



Manual Ratchet Kit:

SVI #	Description
SV-30	Manual Ratchet Kit - Includes all Major Parts and Hardware Necessary to Retrofit or Upgrade Weaver Models EC-105B & EC-106B After 1974. (will also work on SVI 10-5/8" Front Moveable Cylinder Assemblies)



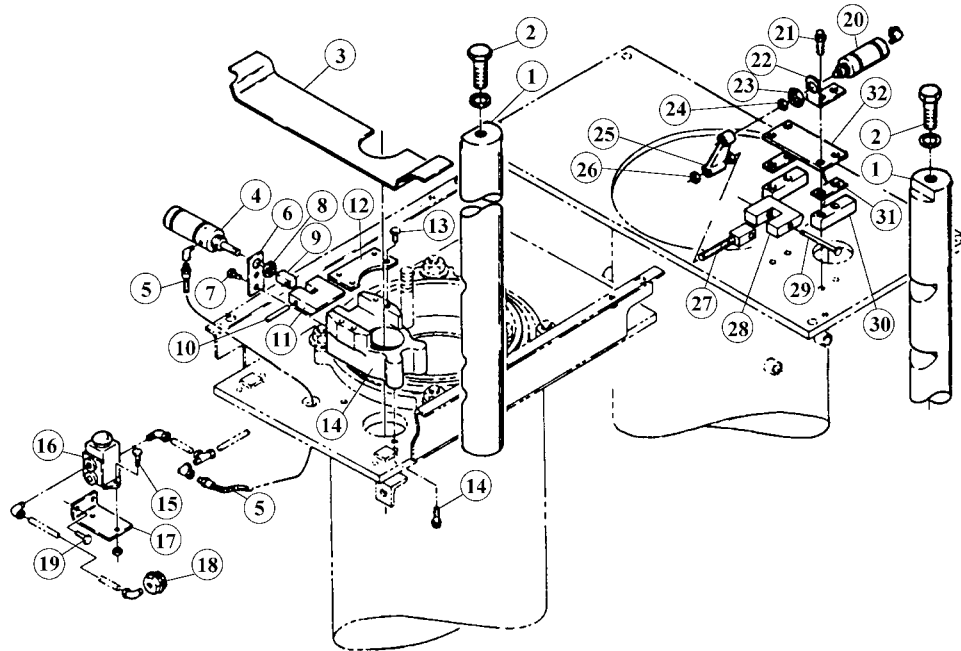
Power Ratchet Kit:

SVI #	Description
SV-32	Hydraulic Operated Power Ratchet - Includes all Major Parts and Necessary Hardware to Retrofit or Upgrade Weaver Model EC-106B. This Kit can Convert the Ratchet System from Manual to Power or can Directly Replace Existing Weaver EC-32 Power Spot. (will also work on SVI 10-5/8" Front Moveable Cylinder Assemblies equipped with Electric-Hydraulic Pumping Unit)

P
a
g
e

Options and Accessories for Front & Rear Lifts

Air-Operated Multi-Position Safety Leg Systems



SVI #	Plunger	Size	for Models:
SV-52F	Front	7-1/2"	EC-102, EC-103, EC-202, EC-203
SV-52R	Rear	7-1/2"	EC-102, EC-103, EC-202, EC-203
SV-54F	Front	7-1/2"	EC-107, EC-108
SV-54R	Rear	10-5/8"	EC-107, EC-108, MC-303
SV-56F	Front	10-5/8"	EC-105, EC-106, MC-301, MC-304
SV-56R	Rear	10-5/8"	EC-105, EC-106, MC-302
SV-57	Dual F/R	10-5/8"	EC-106DR, MC-306, MC-307, MC-308, MC-309
BH-9668-06C	Rear	12-5/8"	MC-330

Air-Operated Multi-Position Safety Leg Systems Consist of Solid Steel Safety Leg, Necessary Lock Assembly Parts and Hardware. Kits Do Not Include New Casings, Axles or Air Line Tubing.

Air-Operated Multi-Position Safety Leg Systems can Retrofit or Be Used to Upgrade Any Weaver Lift that Originally had Either Air-Operated or Manual Safety Legs. Older Lifts that Never had Safety Legs will Require New Casings and Possibly Axles. Please Call for Details.

For Individual Parts Listing, See SVI Lift Repair Catalog "Weaver #LRC9600" containing all repair parts for Weaver and SVI Lifts.

Optional Accessories

SVI #	Description
BH-9830-15	15 lb. Anode
BH-9830-30	30 lb. Anode
BH-9980-00	1/2" Dielectric Union
BH-9980-01	1" Dielectric Union
BH-9982-01	2" N.P.T. Shut-Off Valve for Power Unit
FK-32-0500	1/2" Ball Valve 600 W.O.G.
FK-32-0750	3/4" Ball Valve 600 W.O.G.
FK-32-1000	1" Ball Valve 600 W.O.G.
BH-9900-02	2" X 100' Pipe Wrap Tape - Corrosion Resistant
BH-9900-04	4" X 100' Pipe Wrap Tape - Corrosion Resistant
BH-9971-55	55 Gallon Drum - Hydraulic Oil w/Anti-Foam, Anti-Rust
BH-9971-05	5 Gallon Pail - Hydraulic Oil w/Anti-Foam, Anti-Rust
BH-9972-55	55 Gallon Drum - Hydraulic Oil - Biodegradable ISO-VG-32
BH-9972-05	5 Gallon Pail - Hydraulic Oil - Biodegradable ISO-VG-32

For Individual Parts Listings on Weaver and SVI Lifts, See SVI's Lift Repair Catalog for Weaver

Call your SVI Rep today!



SVI Product Feature Showcase . . .

The Big Guns

Since it is always time to lift something big and your customers want a product that is proven and designed to last, offer Power Post lifting solutions from SVI.

SVI Power Post lifting systems and replacement cylinder assemblies and kits are assembled and hydraulically tested right in

our main facility located just outside of Chicago. Each cylinder is produced using domestically made components.

The key components go through a rigorous inspection process where 100% of the dimensions critical to us are verified for complete accuracy. This means you can rest assured you are supplying your customer with a top quality lift that is robustly designed and intended to last for many years into the future.

Power Post models are available with many upgrade options including MPTR style multi-position safety legs that do not require air to operate. However, for those that like pushing buttons, we still offer air operated multi-locks.

For reliability, safety, a proven design and a price that won't break the bank, specify SVI lifting products the next time you need to install a new lift or fix a section on an existing lift.



Great for salt trucks

The model 3P-12210 pictured features:

- 12-5/8" front moveable recessed cylinder assembly
- 10-5/8" dual rear cylinder assembly.
- Air-operated multi-position locks
- Dual chain hydraulic drive power spot for positioning the front cylinder
- American made
- Proven design
- Non-stop parts availability
- From a company you can trust
- Fiberglass protected casings
- High lifting capacity
- Few moving parts to fail
- Safety and reliability



Model 3P-12210 pictured

Produced for safety and reliability

Power Post Vehicle Lifting Systems



DIRECT FIT™ BRAND

SVI International, Inc.

Catalogs and Information Online: www.sviinternational.com

AUTO LIFT REPAIR PARTS FOR ALL MAKES & MODELS

~NO MATTER THE AGE OF THE LIFT!

- Arm Restraint Kits & Parts
- Cables—Lifting and Equalizing
- Chain
- doorjammerPRO - Door Protection Pad
- Height Extensions and Rubber Pads
- Installation Products & Tools
- Power Units and Parts
- Pulleys and Chain Rollers
- Seal Kits for In-Ground & Surface Mount
- Safety Legs / Non-Rotators
- Replacement Lift Kits
- Power Post Lifting Systems
- Tanks for In-Ground Lifts
- Turf Attachments for 2-Post Lifts

SURFACE MOUNT LIFT PARTS FOR:

Acanus	Gemini	Quality
Ammco®*	Gilbarco	Ranger
Alamo /	Globe	Ravaglioli
ASSSA	Grand	Rotary Lifts
ALM	Hofmann	Silent Tech
AMI	Hydralift	Slift
Ashawa	Ime Istobal	Somers Souriau
Ben Pearson	Kismet	Stenhoj
BendPak	Kimm	Stertil Koni
Benwil	Koni	Sun
Bishamon	Launch	Tecalemit
Boston	Laycock	Titan
Bradbury	Lincoln	Weaver
Cascos	Maha	Werther
Consul	Manitowoc Lifts	Western
Challenger	Mohawk	Westinghouse
Force	Nussbaum	Wheeltronic
Ford Smith	OMA	Worth
Forward	OMCN	Zippo
Fuchs/Zippo	PMW	

IN-GROUND LIFT PARTS FOR:

Benwil	Gilbarco	PKS Lifts
Challenger	Globe	Rotary
Cochin	HDL/ISS Innovative	US Hoist
Curtis	Joyce	Weaver
Ford Smith	Manitowoc Lifts	Western

AIR COMPRESSOR PARTS

- Air Receiver Tanks • Compressor Mufflers
- Automatic Tank Drain Valve for Champion Compressors
- Filters—Many OEM Ref Available!
- Filters, Regulators, Lubricators
- Intake Filter Products
- Milton Air System Products
- Re-Coil Hose • Valves
- Vibration Dampening Pads & much more!

BRAKE LATHES REPAIR PARTS

- Brake Lathe Repair Parts and Accessories for All Makes

EXHAUST REMOVAL SYSTEMS & PRODUCTS

FLUID DELIVERY

- Lenz Fittings
- Steel Hydraulic Line Tubing and Fittings
- Strut and Hangers

HOSE REELS BY REELCRAFT®

HYDRAULIC CYLINDERS—

- Custom Single-Acting Large Bore Cylinders
- Also see "Lifting Equipment"

LIFTING EQUIPMENT

- New In-Ground Lifts—Car, Truck & Bus
- Small Equipment Shop Maintenance (SESM) Lifts for lifting Landscape Equip. ATVs / UTVs, Motorcycles, Lawn Mowers, Golf Carts and More!
- Custom Lifting Equipment incl. Production Line Lifts, Rail Car Lifts and More
- Custom Hydraulic Cylinders for Various Applications
- Turf Attachments for 2-Post Lifts
- In-Ground Lift Sections and Kits
- And more!

EASY TO ORDER:
800-321-8173
815-748-0200
Fax: 800-899-1784 • 815-748-0210
E-Mail: parts@sviintl.com
www.sviinternational.com

LUBRICATION & PAINT / FOAM SPRAY REPAIR PARTS & KITS FOR:

- Alemite • ARO • Balcrank • Graco • Lincoln

PETROLEUM EQUIPMENT & REPAIR PARTS FOR:

- Gas Pump & Meter Kits and Parts for Gasboy • Tokheim • Fill-Rite
- Including Parts for Older Pumps: Wayne • Bennett • Gilbarco • Bowser A.O. Smith (Geosource) • Southwest

SEAL KITS

SHOP EQUIPMENT

- Hein-Werner Products • Omega Products
- Porto-Power • Pro-Lift

TIRE EQUIPMENT REPAIR PARTS

- Tire Changer and Wheel Balancer Parts for All Makes

Accu-Turn	FMC	Nussbaum
All Tool	Giuliano	Ranger
Ammco®*	Hofmann	Sicam
BaseLine®*	Hunter	Sice
Bosch	John Bean /	Snap-On
Cemb	(JBC)	Teco
Coats®*	Kwik-Way	Tuxedo
Corghi	Launch	

VALVES

- Air Compressor Valves of All Types
- Air and Hoist Control Valves
- Ball Valves • Check Valves
- Kingston Valves • Pressure Relief Valves
- Relief Valves • Safety Valves
- Solenoid Valves
- Tire Changer Valves • And More!

CUSTOM PRODUCTS

And let us know if you want something you use in your shop to be added to our product line!

DIRECTFIT™ In addition to SVI's DIRECT FIT™ BRAND, we are proud to be a one-stop shop for many other great products including:



3 Ready-Ship Warehouses for Faster Shipping! | **BALTIMORE • CHICAGO • LOS ANGELES**

Main Office: 155 Harvestore Drive • DeKalb, IL 60115

All names, numbers, symbols and descriptions are used for reference purposes only. It is not implied that any part listed is the product of these manufacturers.

SVI does not represent and is not associated in any way with any other companies. Entire contents copyright © 2020, SVI International, Inc. Prices subject to change without notice.

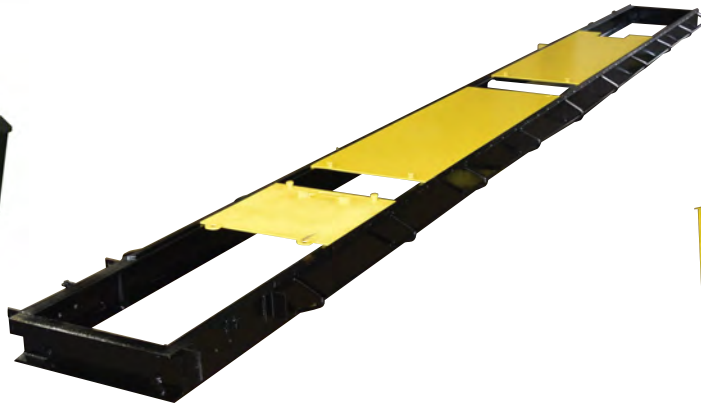
*AMMCO, BASELINE, COATS and DUCKHEAD are registered trademarks of Hennessy Industries, Inc. SVI International, Inc. is not associated in any way with Hennessy Industries, Inc.

**TERMS AND CONDITIONS OF THE
SALES ORDER
FOR SVI INTERNATIONAL, INC.**

1. **GENERAL.** The terms and conditions of sales order outlined herein shall apply to the sale by SVI INTERNATIONAL, INC. (hereinafter referred to as "Company") of the items described on the facing page (hereinafter referred to as "Merchandise") to Purchaser.
2. **DELIVERY.** Delivery shall be deemed to be complete when the Merchandise has been shipped F.O.B. Company's plants in DeKalb, Illinois, Montclair, California; and Hanover, Maryland ("Company's plants"). Shipments are subject to delays from causes or contingencies beyond the reasonable control of the Company. When otherwise not specified, shipments will be made in standard containers via carrier which, in the judgment of the Company, will result in the most practical method. Title and right of possession will pass to the Purchaser upon receipt by the carrier at the shipping point. If a customer of the Company should specify a specific carrier's method of shipment (i.e. UPS Next Day Air) and that carrier does not perform to the customer's expectations, freight credit to a customer's account will not be issued unless the Company can first obtain a credit.
3. **RISK OF LOSS.** Identification of the Merchandise under Uniform Commercial Code (hereinafter referred to as "UCC") Section 2-501 shall take place at the moment of shipment F.O.B. Company's plants. Risk of loss shall pass to the Purchaser when the Merchandise is shipped from the Company's plants.
4. **TITLE.** Title to the merchandise shall transfer to the Purchaser when the Merchandise is shipped from the Company's plants.
5. **WARRANTIES.** The Company guarantees its products to be free from defects in workmanship and raw materials for a period of one year from date of purchase. THIS WARRANTY IS EXPRESSLY IN LIEU OF ANY AND ALL WARRANTIES EXPRESS OR IMPLIED. COMPANY DOES NOT WARRANT THE MERCHANDISE IS MERCHANTABLE OR FIT FOR ANY PARTICULAR PURPOSE.
Company's liability for breach of the terms of this Agreement, including any warranty, is limited to either refund of the invoice price of the Merchandise or at Company's option, replacement of the Merchandise free of charge, including transportation charges but not including the cost of labor. Purchaser has not relied on any statement or upon the conduct of Company with respect to the prospective use of the merchandise. Company shall not be liable for and Purchaser waives any and all claims for any loss or damage, directly or indirectly, arising from the use of the Merchandise and for punitive, incidental or consequential damages, including, but not limited to, damages to property, for loss of use, loss of time, loss of profit or loss of income. The Company does not authorize the sale of our products under any other warranty, expressed or implied. **Please note:** Electrical components and cylinder and shaft seals are not covered under warranty.
6. **SETOFF.** All claims for money due or to become due from the Company shall be subject to deduction by the Company for any setoff or counterclaim arising out of this or any other claims of the Company or its affiliated companies, whether such setoff or counterclaim arose before or after any assignment by Purchaser.
7. **INDEMNIFICATION.** Purchaser agrees to indemnify the Company and hold it harmless from and against all claims, liability, loss, damage or expense, including reasonable counsel fees, arising from or by reason of any modifications or alterations made by Purchaser. If a customer of the Company modifies or alters any part, in any manner whatsoever, or uses any part in departure from recommended performance specifications, said customer agrees to indemnify and hold the Company harmless from and against all liability and expenses based on damage to property or injury to or death of any person arising out of or attributable to such modified or altered part. Further, the Company will not accept any such modified or altered part for credit to a customer's account.
8. **FREIGHT POLICY.** Freight charges are prepaid and added to invoice or collect FOB shipping point. Note: All customers are responsible for all carrier shipping costs, fees, surcharges, etc. including order refusal and return fees.
9. **RETURN POLICY.** To return a part for credit or inspection, Purchaser must first contact our Main Office in Illinois, to obtain a Return Merchandise Form. Once Purchaser has obtained this form, the parts can be returned freight prepaid only. The Return form must be included with the shipment. Parts returned to the Company without the approved form will be returned freight collect to the shipper or refused. Returns must be initiated within 30 days of the invoice date. The Return Forms are valid for 30 days, from the date of issue. All Returns are subject to restocking charges. Return parts brought into our remote warehouses, will not be accepted by our personnel, without a Return Merchandise Form from the Main Office. Parts which have been used in any way or manner, including any installation or incorporation into a lift, hoist, or other equipment, shall NOT be eligible for return whether or not a Return form has been assigned. **Please note:** Electrical parts or components are not returnable for credit. This includes all switches, pushbuttons, relays, electric motors, capacitors, fuses, solenoids, power units with wiring issues or any other electrical items. Custom, built to order, special order, and non-stocked genuine parts are non-returnable.
10. **RESTOCK CHARGE.** Returns are subject to a restocking charge. Refusals are subject to the same restocking charge plus the cost of outbound and return freight charges and/or fees incurred by the Company due to shipment refusal.
11. **PRICES AND PAYMENTS.** All prices are subject to change without notice. All prices are F.O.B. shipping point. The Company standard terms are net 30 days, C.O.D. company check, C.O.D. cash, VISA, MasterCard, Discover or American Express. However, if in the judgment of the Company, the financial condition of the Purchaser at any time does not justify shipment according to standard terms of payment, the Company may require full or partial payment in advance.
12. **INTERPRETATION.** This sales order is intended by the parties as a complete and exclusive statement of the terms of their agreement. It supersedes all prior agreements, written or oral. No course of prior dealings between the parties and no usage of the trade shall be relevant to supplement or explain any terms used in this sales order. Acceptance or acquiescence in a course of performance rendered under this purchase order shall not be relevant to determine the meaning of this sales order even though the accepting or acquiescing party has knowledge of the nature of the performance and opportunity for objection. Whenever a term defined by the UCC is used in this sales order the definition contained in the UCC shall control.
13. **MODIFICATION.** This sales order can be modified or rescinded only by a writing signed by both parties.
14. **WAIVER.** No claim or right arising out of a breach of this sales order can be discharged in whole or in part by a waiver or renunciation of the claim or right unless such waiver or renunciation is supported by consideration and is in writing signed by the aggrieved party.
15. **ASSIGNMENT.** No right or interest in this sales order shall be assigned by either party without the written consent of the other and no delegation of any obligation owed, or of the performance of any obligation by either the Company or Purchaser shall be made without the written consent of the other party. Any attempted assignment or delegation not made in conformity with this paragraph shall be wholly void and totally ineffective for all purposes.
16. **TIME TO PERFORM AND BRING ACTION.** Time is of the essence of this sales order. Any action for breach of this sales order shall be commenced within two (2) years after the cause of action has accrued. Any party who loses any litigation shall reimburse the other party for costs including reasonable attorney's fees. The exclusive jurisdiction for any legal action shall be the Circuit Court of DeKalb County, Illinois.
17. **APPLICABLE LAW.** This sales order shall be governed by the UCC of Illinois as effective and in force on the date of this sales order.



BALTIMORE • CHICAGO • LOS ANGELES



- Air Compressor Parts and Filters
- Auto Lift Parts for Any Brand
- Auto Lift Cables and Chain
- Auto Lift Power Units and Parts
- Auto Lift Sheaves / Pulleys and Chain Rollers
- Brake Lathe Repair Parts for All Makes
- Exhaust System Products
- Fluid Delivery Repair Parts
- Hose Reels and Hose Stops
- In-Ground Auto Lifts
- Lubrication Equipment Repair Parts
- Petroleum / Service Station Pump and Tank Products
- Repair Parts for Gasboy Consumer Series
- SESM Lifts for ATV/UTV, Golf Cart and More!
- Tire Changer Repair Parts
- Transfer Pumps
- Turf Attachments for 2-Post Lifts
- Vehicle Lifting Systems
- Wheel Balancer Accessories

SVI International, Inc.

155 Harvestore Drive • DeKalb, IL 60115

800-321-8173 • 815-748-0200

Fax: 800-899-1784 • 815-748-0210

Entire contents copyright © 2020, SVI International, Inc.

Information and Catalogs Online:
www.sviinternational.com