

cassette/pit lift **Aqua-out**

an  patented product

One nice shop. . .



**Prevent potential out of sight, out of mind problems.
When was the last time you actually looked
below the surface?**

The cassette style lifts in this shop were only recently installed. Every time these lifts are raised fresh, moist air is drawn in to the containment tub. Down below the cool surroundings cause moisture in the air to condense. This condensed moisture (water) accumulates and starts its almost termite-like assault on the lift. Up until now there has been no simple solution to automatic water removal. **SVI is your answer!**

There really is something you can actually do to reduce the water level automatically.
Install Aqua-out. . .

Trouble free? Or,
is something
lurking below?

**At SVI, we don't simply
tell you there is water
down there; SVI actually
does something about it.**



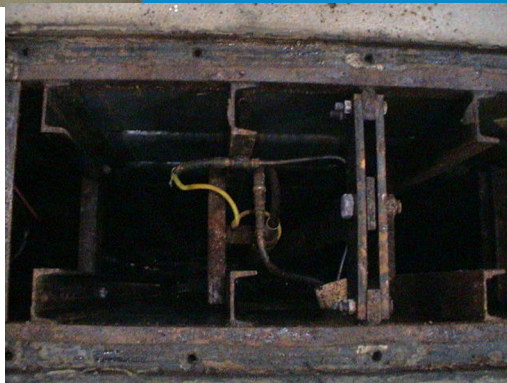
Remove the center cover
and take a look for yourself.
What do you see?

- Water
- Rust
- Corrosion

Aqua-out

For use on cassette and
pit style in-ground lifts.

- Aqua out**
- Protects your investment.
 - Removes water.
 - Works automatically.
 - Air operated.
 - Eliminates routine periodic pump out maintenance.
 - An SVI lift industry solution.



**Get the
water
out now!**

Aqua-out

The Aqua-out automatic water removal system installs in about two hours and gets the water out of your lift every time the lift is lowered or the air valve is actuated. Aqua-out incorporates a moisture filter/regulator, pump and an in-line filter that are all specially designed for the rigors of service your application demands.


Prolong the life of your investment and don't put this installation off another day. Contact your local SVI distributor to schedule an installation. This low cost solution is worth every penny because you spent a lot of dollars to buy these lifts, now protect the investment.

the Aqua-out system



SVI is your answer!

DISTRIBUTED BY:



**This corroded
air lock cylinder
was recently
removed from a lift.
Could other parts be
corroding as well?**