

Gasboy Consumer Products

R E P A I R P A R T S



(800) 321-8173 • fax: (800) 899-1784

155 Harvestore Drive • DeKalb, IL 60115

www.sviinternational.com

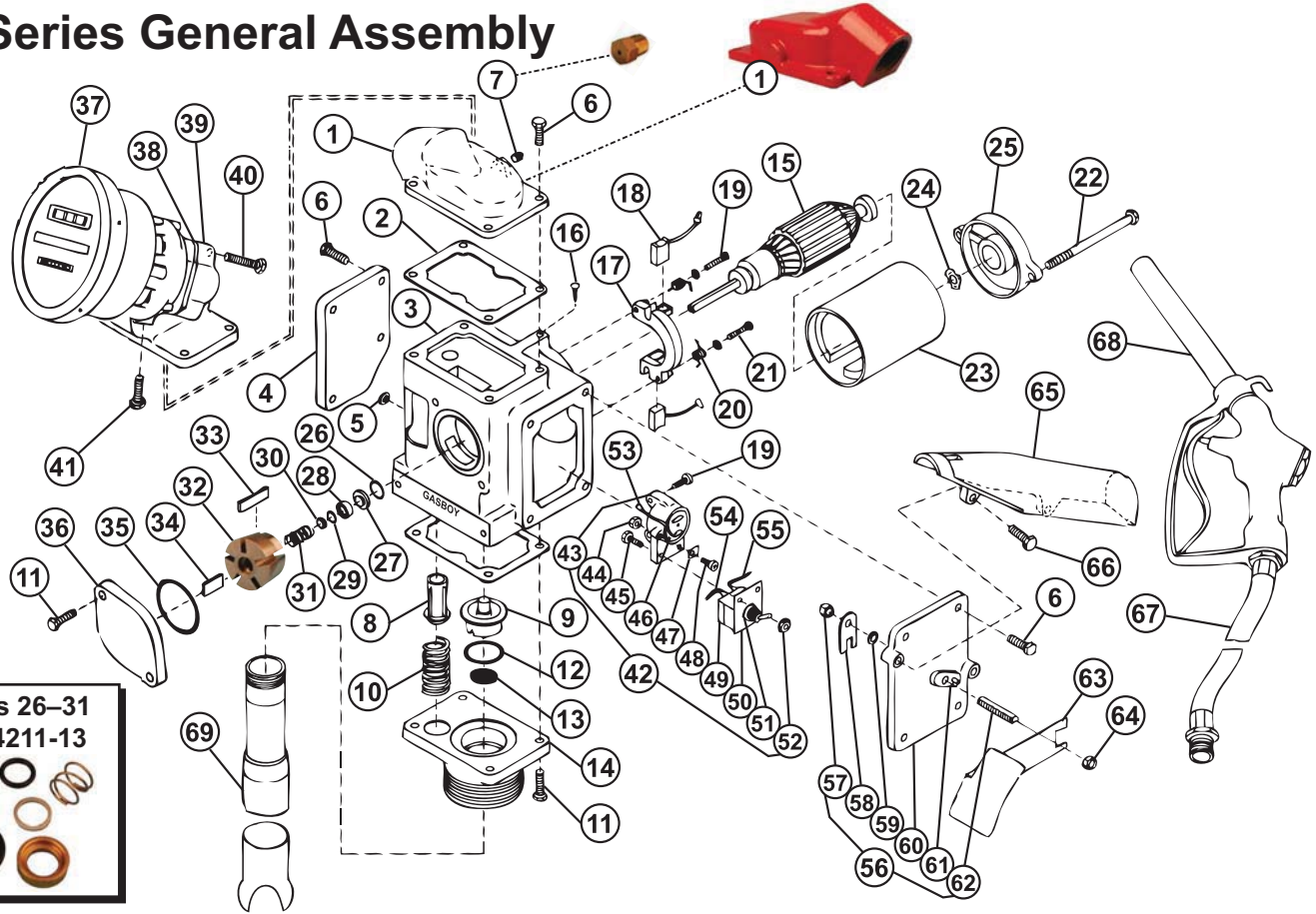
BALTIMORE • CHICAGO • LOS ANGELES

Repair Parts for:
Gasboy
Consumer
Products
PRC4210

Repair Parts for: Gasboy Consumer Products



60 Series General Assembly



Item	SVI part #	OEM #	Description
1	BP-4211-21	003349	Top Cover (Models 61 & 65 only)
	call for details	003047	Top Cover for Meter (Models 60, 64, 67, 68)
	BP-4211-21A	003522	Top Cover w/Vacuum Breaker (61 & 65)
	call for details	003041	Cenex Top Cover, 1" NPT Top Center
	call for details	026204	Cenex Top Cover w/ Vacuum Breaker
2	BP-4211-11	026801	Gasket
3	call for details	003759	Pump Housing
4	call for details	003476	Junction Box Cover
5	call for details	063185	Wire Stop
6	call for details	051810	Machine Screw
	call for details	051808	Machine Screw (Cenex covers)
7	BP-4211-23	066570	Vacuum Breaker Assembly
8	BP-4211-40	066825	Bypass Valve
9	BP-4211-08	066686	Check Valve Assembly
10	BP-4211-41	057394	Bypass Spring
11	BP-4211-42	051805	Machine Screw
12	BP-4211-09	049066	O-Ring
13	BP-4211-39	051586	Strainer
14	call for details	003028	Base Adapter
15	call for details	010948***	Arm/Bearing Assembly (New 12V)
	call for details	010946***	Arm/Bearing Assembly (Old 12V)
	call for details	010949***	Arm/Bearing Assembly (New 12V)
	call for details	010947***	Arm/Bearing Assembly (Old 12V)
	call for details	010921	Armature, 12V
	call for details	010922	Armature, 24V
	call for details	011922***	Bearing (New)
	call for details	011832***	Bearing (Old)
16	call for details	052242	Locating Pin

Item	SVI part #	OEM #	Description
17	BP-4211-35	015843	Brush Holder
18	BP-4211-34	015844	Brush Assembly
19	call for details	052706	Machine Screw
20	BP-4211-20	057395	Brush Spring
21	BP-4211-38	067163	Fiber Washer
22	call for details	051282	Tie Rod
23	call for details	035174	Magnet Barrel Assembly
24	call for details	068953***	Bearing Spring (New)
	call for details	068951***	Bearing Spring (Old)
25	call for details	003468	End Cover
26-31	BP-4211-13	032867	Seal Kit (includes items 26 thru 31)
26	BP-4211-15	048846	O-Ring
27	BP-4211-18	054131	Seal Ring
28	BP-4211-17	054133	Rotating Seal Ring
29	BP-4211-14	048845	O-Ring
30	BP-4211-19	067166	Washer
31	BP-4211-16	057393	Spring
32	BP-4211-04	051482	Rotor
33	BP-4211-07	067018	Vane
34	BP-4211-05	031316	Key
35	BP-4211-10	049061	O-Ring
36	call for details	003488	Pump Cover
37	call for details		Meter & Register Assembly
	call for details		Register Assembly Only
			**See Section on 1860 3-Wheel Meter Register for internal parts
38	BP-4210-20	027055	Gasket
39	call for details	003645	Flange Outlet
40	call for details	052090	Machine Screw

60 Series General Assembly (continued)

41	call for details	052556	Screw
42			Motor Protector & Switch Assy. (12V) (incl. items 43-55) (24V) (incl. items 43-55)
	BP-4218-07	037744	
	call for details	037746	
43	BP-4211-26	031017	Housing - Motor Protector
44	BP-4211-27	039055	Nut
45	BP-4211-28	052707	Machine Screw
46	BP-4211-25	037743	Motor Protector (12V)
	call for details	037745	Motor Protector (24V)
47	BP-4211-29	020896	Retaining Clip
48	BP-4211-30	053665	Screw
49	BP-4211-22	064334	Switch (DPST)
50	BP-4211-31	046957	Switch Plate
51	BP-4211-32	039150	Lock Nut
52	BP-4211-33	039070	Keps Nut
53	call for details	069151	Wire Assembly
54	call for details	069149	Wire Assembly
55	call for details	069150	Wire Assembly
56	BP-4211-44	064352	Switch Cover Assy. (incl. items 57-62)
57	BP-4217-11	038920	Nylock Nut
58	BP-4211-46	069687	Yoke
59	call for details	067164	Spring Washer
60	BP-4211-48	003469	Switch Cover
61	BP-4211-49	043101	Switch Actuator Stop
62	BP-4211-50	054439	Switch Shaft
63	BP-4211-43	014697	Switch Bracket
64	BP-4211-45	038920	Nylock Nut, 5/16-18
65	call for details	000328	Nozzle Boot
66	call for details	051865	Machine Screw
67	call for details	030539	Hose - 5/8 x 12' Softwall
68	BP-4210-108	038475	Nozzle w/ Hook - Leaded
	BP-4210-109	038471	Nozzle w/ Hook - Non-Leaded
	call for details	038511	Hook Assy., EMCO A2000 (incl. set screw - not shown)
69	call for details	064895	Telescopic Suction
70	BP-4211-37	067162	Brush Support
71	call for details	017391	Cable, Power (not shown)
72	call for details	020750	Strain-Relief Cable (not shown)
	call for details	048521	Filter Kit (optional, Model 61)

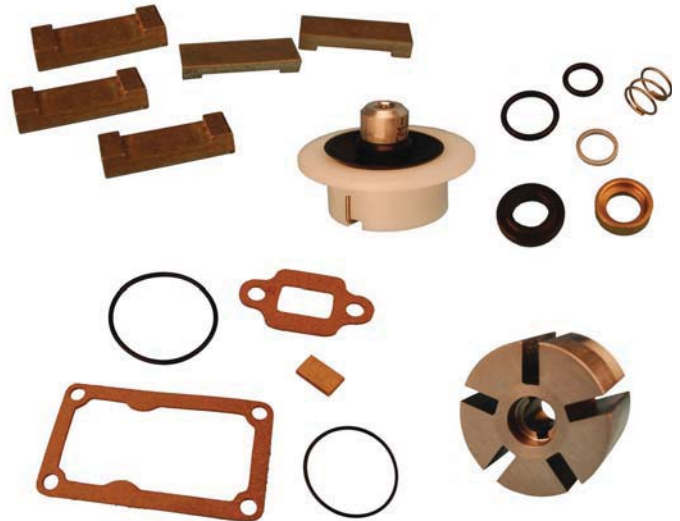
*** As of pump S/N 718173 (12V) or S/N 195052 (24V), a design change was made requiring the use of parts marked "New"

60 Series Motor Brush/Switch Assembly Replacement Kit OEM #S00063 / SVI # BP-4211-36 (pictured right)

Item	SVI part #	OEM #	Description
	BP-4211-36	S00063	Brush/Switch Replacement Kit
18	BP-4211-34	015844	Brush Assembly (Qty: 2)
26	BP-4211-15	048846	O-Ring
27	BP-4211-18	054131	Seal Ring
28	BP-4211-17	054133	Rotating Seal Ring
29	BP-4211-14	048845	O-Ring
30	BP-4211-19	067166	Washer
49	BP-4211-22	064334	Switch (DPST)

All names, numbers, symbols and descriptions are used for reference purposes only. It is not implied that any part listed is the product of these manufacturers; however, some parts may be the actual product of these manufacturers.

Repair Kit for 60 Series OEM #032893 / SVI # BP-4211-03



Item	SVI part #	OEM #	Description
	BP-4211-03	032893	Repair Kit for Series 60
2	BP-4211-11	026801	Gasket
9	BP-4211-08	066686	Check Valve Assembly
12	BP-4211-09	049066	O-Ring, 1-5/8 x 1-3/4
26-31	BP-4211-13	032867	Seal Kit (includes items 26 thru 31)
32	BP-4211-04	051482	Rotor-Machining
33	BP-4211-07	067018	Vane for 60 series
34	BP-4211-05	031316	Key
35	BP-4211-10	049061	O-Ring, 2-1/4 x 2-7/16
38	BP-4210-20	027055	Gasket-Inlet/Outlet



BP-4211-36





Gasboy Quick Reference

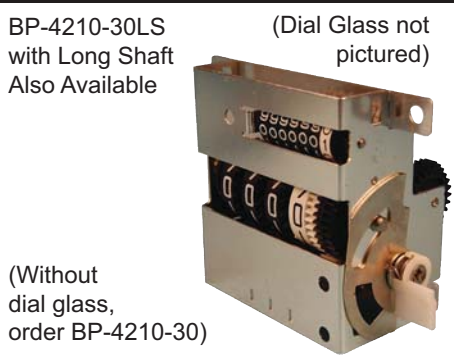
<p>BP-4210-02 Repair Kit - 20 Series (old style)</p>  <p>For new style, order BP-4210-02N</p>	<p>BP-4210-01 Repair Kit for 1800, 70, 390</p> 	<p>BP-4211-03 Repair Kit for 60 Series</p> 
<p>BP-4210-29 Seal Kit (old style) - 20 series</p> 	<p>BP-4210-29N Seal Kit (new style) - 20 series</p> 	<p>BP-4211-13 Seal Kit - 60 Series</p> 
<p>BP-4210-20 Gasket (OEM #M05618B001 / 027055)</p> 	<p>BP-4210-07-5 Vaness (5-pack) - Series 20-26</p> 	<p>BP-4211-07 Vane - 60 Series</p> 
<p>BP-4210-56 Rotor for 20 Series</p> 	<p>BP-4211-04 Rotor - 60 Series</p> 	<p>BP-4210-22 Rotor for 70 Series, 1800 & 390</p> 

Gasboy Quick Reference

BP-4210-28
Check Valve Assy.



BP-4210-30KP
Meter Register with Dial Glass



BP-4211-36
Brush/Switch Replacement Kit



BP-4210-23
Seal Kit for 70 Series & 1820



BP-4217-05
Repair Kit for 1720A, 1520 & 787



BP-4218-07A
Switch & Protector 4 Terminal



BP-4210-60
Check Valve Retrofit Kits



BP-4212-21
Left Wheel for 1860 Register



BP-4212-20
Center Wheel for 1860 Register



BP-4212-04
Meter Bezel - 4860



BP-4212-40
Meter Bezel - Round (70 Series)



BP-4210-80
Bypass Stem Assembly 70/1800





Gasboy Quick Reference

BP-4210-68

Nozzle Hanger 1820



BP-4212-34

Round Dial Mask - Gallons



BP-4212-73

Toggle Switch for Motor 70 Series



BP-4214-07

Vane - Carbon



BP-4212-02

Repair Kit for 1860 Register



BP-4217-10

Repair Kit for 1700 Series



BP-4218-30R

Nozzle Boot - 70 Series (Red)



BP-4210-58

Vacuum Breaker Assembly



BP-4211-23

Vacuum Breaker Assembly



BP-4218-20

Motor for 70 Series

(Available in Red, White or Beige)



1/3 HP Motor 60Hz. 48 Frame

BP-4218-28

Motor for 1800 Series



1/3 HP Motor 60Hz. 48 Frame

BP-4218-25 and BP-4218-26

60 Hz. Motors for 20 Series



BP-4218-25 Motor for Models 25 & 250
BP-4218-26 Motor for Models 26, 27, 28

Gasboy Quick Reference

BP-4210-67
Check Valve Assembly



BP-4211-08
Check Valve - 60 Series



BP-4210-04
Seal Kit - 600 Series



BP-4212-17
Reset Bearing



BP-4212-18
Reset Button



BP-4212-03
Repair Kit for 4860 Register



**TERMS AND CONDITIONS OF THE
SALES ORDER
FOR SVI INTERNATIONAL, INC.**

1. **GENERAL.** The terms and conditions of sales order outlined herein shall apply to the sale by SVI INTERNATIONAL, INC. (hereinafter referred to as "Company") of the items described on the facing page (hereinafter referred to as "Merchandise") to Purchaser.
2. **DELIVERY.** Delivery shall be deemed to be complete when the Merchandise has been shipped F.O.B. Company's plants in DeKalb, Illinois, Duarte, California; and Baltimore, Maryland ("Company's plants"). Shipments are subject to delays from causes or contingencies beyond the reasonable control of the Company. When otherwise not specified, shipments will be made in standard containers via carrier which, in the judgment of the Company, will result in the most practical method. Title and right of possession will pass to the Purchaser upon receipt by the carrier at the shipping point. If a customer of the Company should specify a specific carrier's method of shipment (i.e. UPS Next Day Air) and that carrier does not perform to the customer's expectations, freight credit to a customer's account will not be issued unless the Company can first obtain a credit.
3. **RISK OF LOSS.** Identification of the Merchandise under Uniform Commercial Code (hereinafter referred to as "UCC") Section 2-501 shall take place at the moment of shipment F.O.B. Company's plants. Risk of loss shall pass to the Purchaser when the Merchandise is shipped from the Company's plants.
4. **TITLE.** Title to the merchandise shall transfer to the Purchaser when the Merchandise is shipped from the Company's plants.
5. **WARRANTIES.** The Company guarantees its products to be free from defects in workmanship and raw materials for a period of one year from date of purchase. THIS WARRANTY IS EXPRESSLY IN LIEU OF ANY AND ALL WARRANTIES EXPRESS OR IMPLIED. COMPANY DOES NOT WARRANT THE MERCHANDISE IS MERCHANTABLE OR FIT FOR ANY PARTICULAR PURPOSE. Company's liability for breach of the terms of this Agreement, including any warranty, is limited to either refund of the invoice price of the Merchandise or at Company's option, replacement of the Merchandise free of charge, including transportation charges but not including the cost of labor. Purchaser has not relied on any statement or upon the conduct of Company with respect to the prospective use of the merchandise. Company shall not be liable for and Purchaser waives any and all claims for any loss or damage, directly or indirectly, arising from the use of the Merchandise and for punitive, incidental or consequential damages, including, but not limited to, damages to property, for loss of use, loss of time, loss of profit or loss of income. The Company does not authorize the sale of our products under any other warranty, expressed or implied.
6. **SETOFF.** All claims for money due or to become due from the Company shall be subject to deduction by the Company for any setoff or counterclaim arising out of this or any other claims of the Company or its affiliated companies, whether such setoff or counterclaim arose before or after any assignment by Purchaser.
7. **INDEMNIFICATION.** Purchaser agrees to indemnify the Company and hold it harmless from and against all claims, liability, loss, damage or expense, including reasonable counsel fees, arising from or by reason of any modifications or alterations made by Purchaser. If a customer of the Company modifies or alters any part, in any manner whatsoever, or uses any part in departure from recommended performance specifications, said customer agrees to indemnify and hold the Company harmless from and against all liability and expenses based on damage to property or injury to or death of any person arising out of or attributable to such modified or altered part. Further, the Company will not accept any such modified or altered part for credit to a customer's account.
8. **FREIGHT POLICY.** Freight charges on individual orders less than \$3,000 in net value are prepaid and added to invoice or collect F.O.B. shipping point. Freight charges (standard ground service and continental US only) on individual orders more than \$3,000 net value are paid by the Company F.O.B. shipping point. Note: customers with C.O.D. terms are responsible for all carrier C.O.D. fees regardless of order net value.
9. **RETURN POLICY.** To return parts for credit or inspection Purchaser must first contact the Company to obtain a Return Goods Authorization number (RGA#). Once Purchaser has obtained an RGA# the parts can be returned freight prepaid only. The RGA# must be on the outside of the container in a highly visible location. All parts must be returned freight prepaid and the shipment must include a letter of explanation giving the specific reason for return including details as to the conditions under which the part or parts operated. Note: parts returned without an RGA#, freight collect or without written explanation may be refused. Parts which have been used in any way or manner, including any installation or incorporation into a lift or hoist, shall NOT be eligible for return whether or not an RGA has been assigned.
10. **RESTOCK CHARGE.** Returns are subject to up to twenty-five (25%) restocking charge. Refusals are subject to the same restocking charge plus the cost of outbound and return freight charges and/or fees incurred by the Company due to shipment refusal.
11. **PRICES AND PAYMENTS.** All prices are subject to change without notice. All prices are F.O.B. shipping point. The Company standard terms are net 30 days, C.O.D. company check, C.O.D. cash, VISA, MasterCard, Discover or American Express. However, if in the judgment of the Company, the financial condition of the Purchaser at any time does not justify shipment according to standard terms of payment, the Company may require full or partial payment in advance.
12. **INTERPRETATION.** This sales order is intended by the parties as a complete and exclusive statement of the terms of their agreement. It supersedes all prior agreements, written or oral. No course of prior dealings between the parties and no usage of the trade shall be relevant to supplement or explain any terms used in this sales order. Acceptance or acquiescence in a course of performance rendered under this purchase order shall not be relevant to determine the meaning of this sales order even though the accepting or acquiescing party has knowledge of the nature of the performance and opportunity for objection. Whenever a term defined by the UCC is used in this sales order the definition contained in the UCC shall control.
13. **MODIFICATION.** This sales order can be modified or rescinded only by a writing signed by both parties.
14. **WAIVER.** No claim or right arising out of a breach of this sales order can be discharged in whole or in part by a waiver or renunciation of the claim or right unless such waiver or renunciation is supported by consideration and is in writing signed by the aggrieved party.
15. **ASSIGNMENT.** No right or interest in this sales order shall be assigned by either party without the written consent of the other and no delegation of any obligation owed, or of the performance of any obligation by either the Company or Purchaser shall be made without the written consent of the other party. Any attempted assignment or delegation not made in conformity with this paragraph shall be wholly void and totally ineffective for all purposes.
16. **TIME TO PERFORM AND BRING ACTION.** Time is of the essence of this sales order. Any action for breach of this sales order shall be commenced within two (2) years after the cause of action has accrued. Any party who loses any litigation shall reimburse the other party for costs including reasonable attorneys fees. The exclusive jurisdiction for any legal action shall be the Circuit Court of DeKalb County, Illinois.
17. **APPLICABLE LAW.** This sales order shall be governed by the UCC of Illinois as effective and in force on the date of this sales order.

Offering the Best in Automotive Lift Repair Parts and More!

Auto Lift Cables • Auto Lift Parts • Brake Lathe Repair Parts

Compressed Air Repair Parts • Exhaust System Products • Fluid Delivery Repair Parts

Lubrication Equipment Repair Parts • Repair Parts for Gasboy Consumer Series

Service Station Pump and Tank Products • SVI Misc Auto Lift Products and Catalogs

Tire Changer Repair Parts • Vehicle Lifting Systems • Wheel Balancer Accessories

Serving the Industry Since 1977 • Same-Day Shipping



SVI International, Inc.

(800) 321-8173 • fax: (800) 899-1784

155 Harvestore Drive • DeKalb, IL 60115

www.sviinternational.com

BALTIMORE • CHICAGO • LOS ANGELES