

Gasboy Consumer Products

R E P A I R P A R T S



(800) 321-8173 • fax: (800) 899-1784

155 Harvestore Drive • DeKalb, IL 60115

www.sviinternational.com

BALTIMORE • CHICAGO • LOS ANGELES

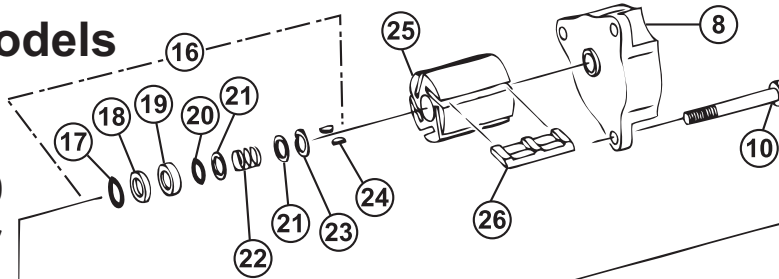
Repair Parts for:
Gasboy
Consumer
Products
PRC4210

Repair Parts for: Gasboy Consumer Products



20 Series Models

Models 25–28 and Model 250 Pump & Motor



BP-4210-56
Rotor

BP-4210-29
(old style)

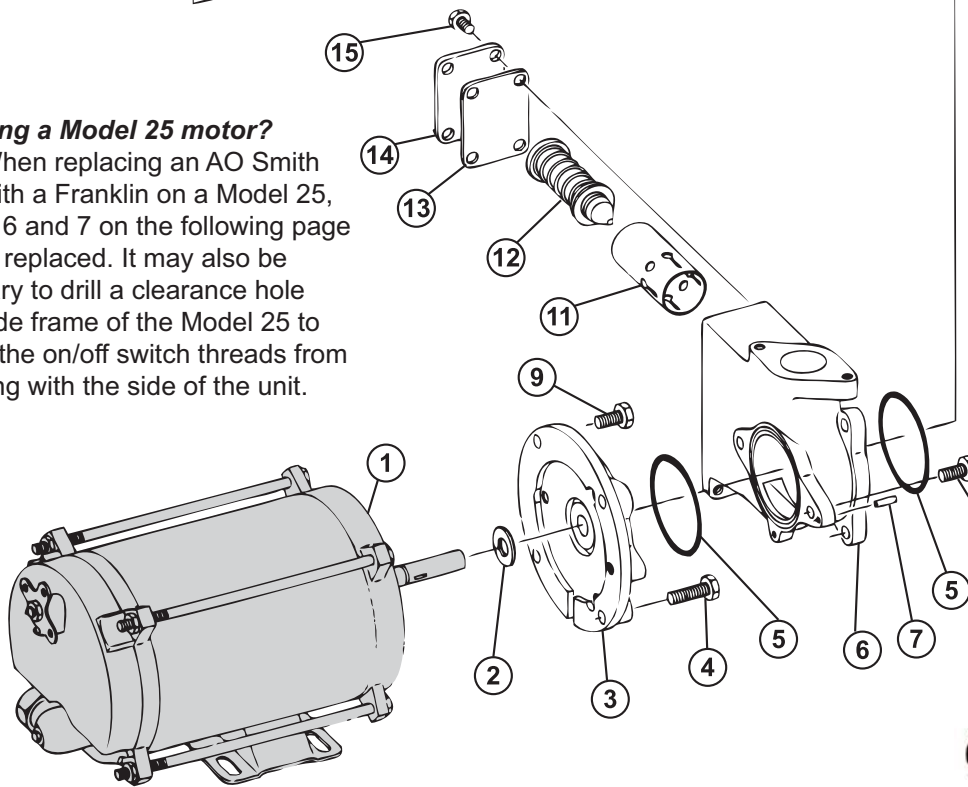


BP-4210-29N
(new style)



Replacing a Model 25 motor?

Note: When replacing an AO Smith motor with a Franklin on a Model 25, items 5, 6 and 7 on the following page must be replaced. It may also be necessary to drill a clearance hole in the side frame of the Model 25 to prevent the on/off switch threads from interfering with the side of the unit.



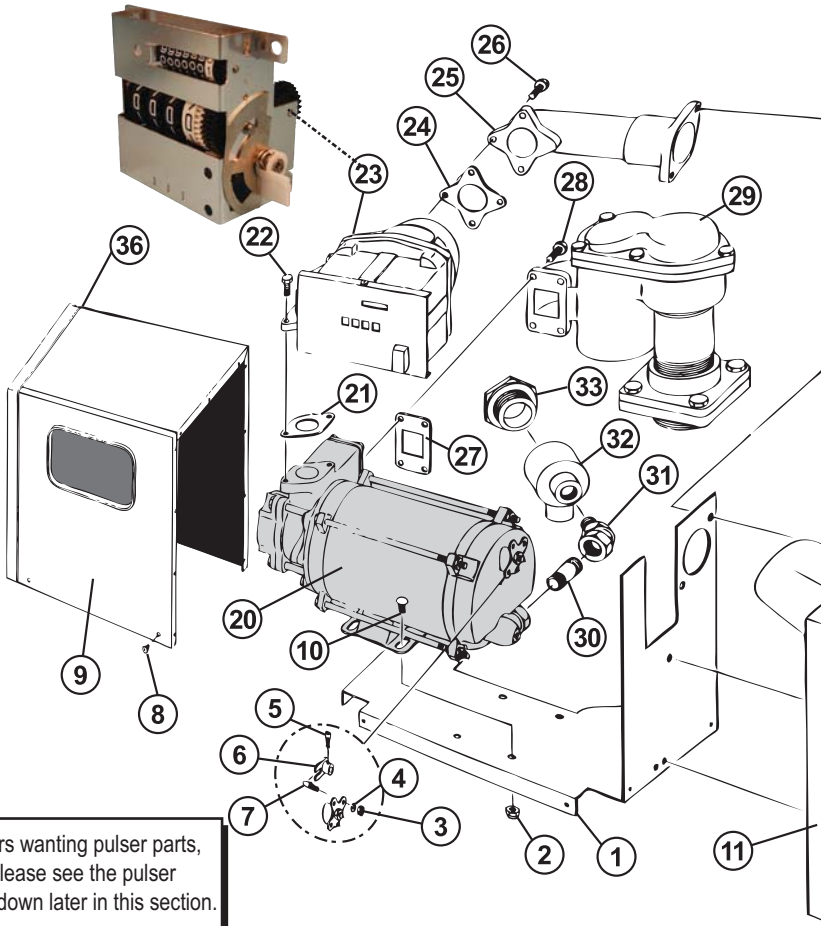
Item	SVI part #	OEM #	Description
1	BP-4218-25	F37683	Motor, Model 25 & 250, 60 Hz.
	BP-4218-29	F37685	Motor, Model 25 & 250, 50 Hz.
	BP-4218-26	F37684	Motor, Model 26, 27, 28, 60 Hz.
	BP-4218-27	F37686	Motor, Model 26, 27, 28, 50 Hz.
2	BP-4210-86	049525	Slinger Ring, Buna N side toward pumping unit
3	BP-4210-75	003722	Inner Pump Head
4	call for details	052045	Cap Screw, 3/8-16 x 1-1/4
5**	BP-4210-53	049180	O-Ring 3" ID
6	call for details	003208	Pump Block
7	BP-4210-77	054535	Locating Pin
8	call for details	022168	Pump Cover
9	call for details	051985	Cap Screw, 3/8-16 x 3/4
10	call for details	052135	Cap Screw 3/8-16 x 3
11	call for details	065726	Tube, Bypass Valve
12	call for details	066991	Bypass Valve Assembly

Item	SVI part #	OEM #	Description
13**	BP-4210-43	026811	Bypass Valve Gasket
14	call for details	023037	Bypass Cover
15	BP-4210-113	051880	Cap Screw, 5/16-18 x 1/2
16**	BP-4210-29	054030	Seal Assembly (old style)
	BP-4210-29N	054030	Seal Assembly (new style)
17	BP-4210-36	048956	O-Ring
18	BP-4210-35	048820	Floating Seal Ring
19	BP-4210-34	049510	Rotating Seal Ring
20**	BP-4210-33	048941	O-Ring .612 ID
21	BP-4210-32	067210	Washer
22	BP-4210-31	057956	Spring
23	call for details	049436	E-Ring
24	BP-4210-73	031375	Woodruff Key
25	BP-4210-56	051491	Rotor
26**	BP-4210-07	067061	Vane
	BP-4210-07-5		Vanes (5-pack)

** Part is included in Repair Kit BP-4210-02 (OEM # 032892)

All names, numbers, symbols and descriptions are used for reference purposes only. It is not implied that any part listed is the product of these manufacturers; however, some parts may be the actual product of these manufacturers.

**20 Series Models
Model 25 Assembly**



Users wanting pulser parts,
please see the pulser
breakdown later in this section.

Item	SVI part #	OEM #	Description
1	call for details	026519	Frame Assembly
2	BP-4217-11	038920	5/16-18 Hex Lock Nut
3	F-HN-0250-20	038860	Hex Nut, 1/4"
4	call for details	068891	Lockwasher, 1/4"
5	call for details	053516	Soc. Head Set Screw 10-32 x 1/4 Cup
6	call for details	017566	Cam Assembly
7	call for details	042282	Pin
8	call for details	053652	Phillips Head Screw, #8-32 x 1/2
9	call for details	022102	Front Cover Assembly, CRS
	call for details	041276	Front Cover Assembly, SS
10	call for details	013030	Carriage Bolt
11	call for details	041382	Right Side Panel Assembly, CRS
	call for details	041831	Right Side Panel Assembly, SS
12	call for details	052315	Mach. Screw, 1/4-20x5/8" (for 003673 Hanger)
	BP-4211-42	051805	Screw (for 015139 Hanger, not shown)
13	call for details	003673	Nozzle Hanger (Auto Nozzle)
	call for details	015139	Nozzle Hanger (Manual Nozzle, not shown)
14	call for details	051072	Switch Arm Assembly
15	call for details	068281	Spring Washer
16	call for details	068020	Washer, 5/16"
17**	BP-4210-51	049062	O-Ring, 1-11/16" ID
18	BP-4210-112	051895	Cap Screw 5/16-18 x 3/4"
19	BP-4210-38	003647	Discharge Flange
	call for details	003611	Discharge Flange w/ Vacuum Breaker Hole
20	BP-4218-25	F37683	Motor, Model 25 & 250, 60 Hz.
	BP-4218-29	F37685	Motor, Model 25 & 250, 50 Hz.

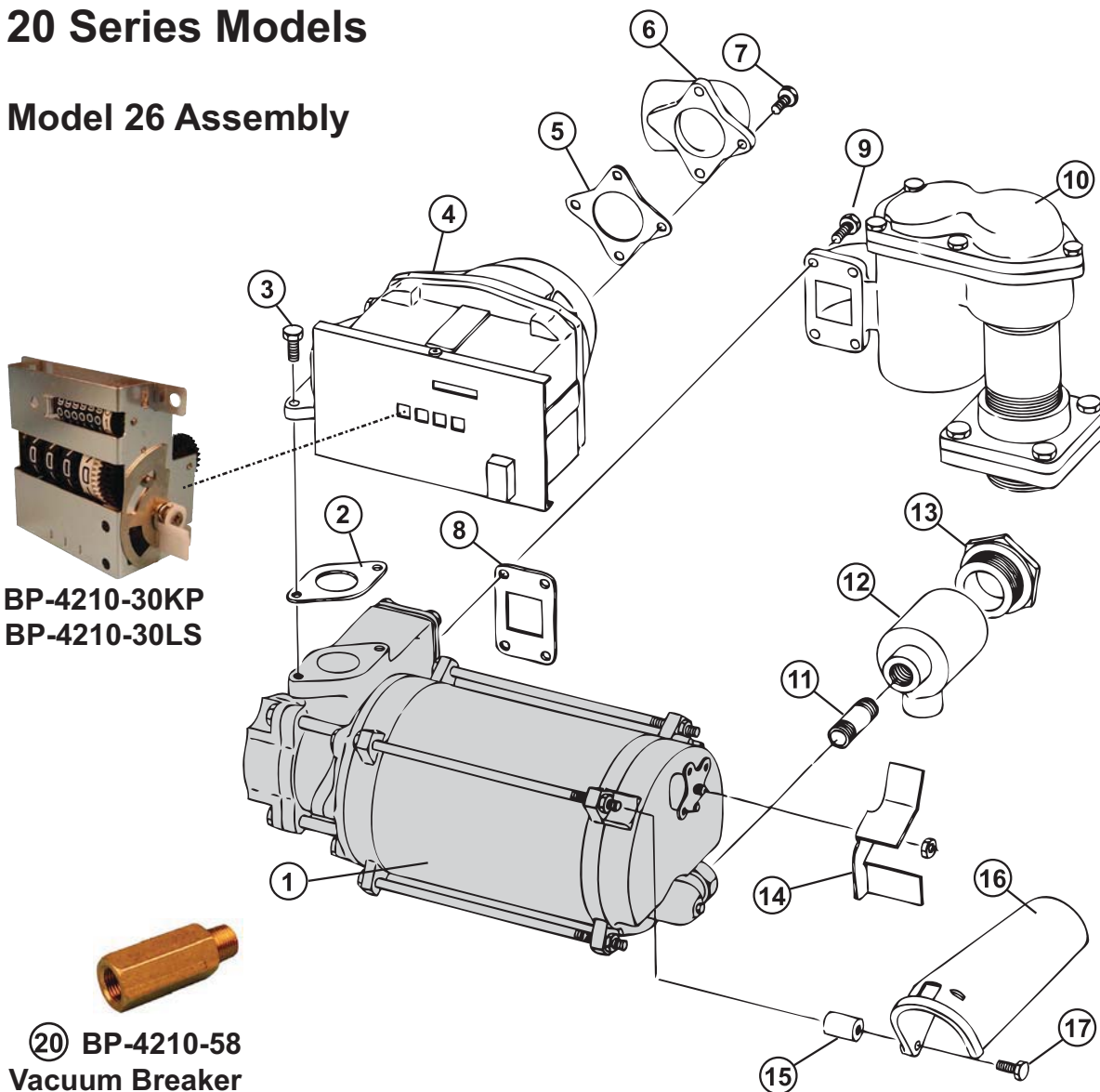
Item	SVI part #	OEM #	Description
21**	BP-4210-42	026810	Gasket
22	call for details	051900	Cap Screw, 5/16-18 x 7/8
23	call for details		Meter, Register
	BP-4210-30KP	S00758	Register Assembly (w/ Dial Glass)
	BP-4210-30LS	S00766	Reg. Assy., Ext. Shaft/Pul (w/ Dial Glass)
24**	BP-4210-41	026809	Gasket
25	call for details	003541	Discharge Casting
26	call for details	051900	Cap Screw, 5/16-18 x 7/8
27**	BP-4210-44	026812	Gasket
28	call for details	051900	Cap Screw, 5/16-18 x 7/8
29	call for details	063357	Strainer Block Assembly, Gasoline
	call for details	063358	Strainer Block Assembly, Diesel
30	call for details	021532	Conduit, 1/2 x 1-3/4
31	call for details	025015	Conduit EII, 1/2 x 45
32	call for details	003345	Junction Box
33	call for details	003515	Junction Box Cover
34	call for details	030430	Hose, 1" x 12' (not shown)
35	call for details	038509	Nozzle, 402-Manual (not shown)
	call for details	038531	Alt. Nozzle, 7H-Automatic (not shown)
36	call for details	022253	Cover Assembly (Top, Back & Left Side), CRS
	call for details	041291	Cover Assembly (Top, Back & Left Side), SS
37	BP-4210-58	066534	Vacuum Breaker Assy., threaded
	BP-4211-23	066570	Vacuum Breaker Assembly (not shown)
38	call for details	063209	Eccentric Stop (not shown)
39	call for details	052314	Screw (not shown)
40	call for details	012267	Bezel
41	call for details	047213	Plug

** Part is included in Repair Kit BP-4210-02 (OEM # 032892)



20 Series Models

Model 26 Assembly



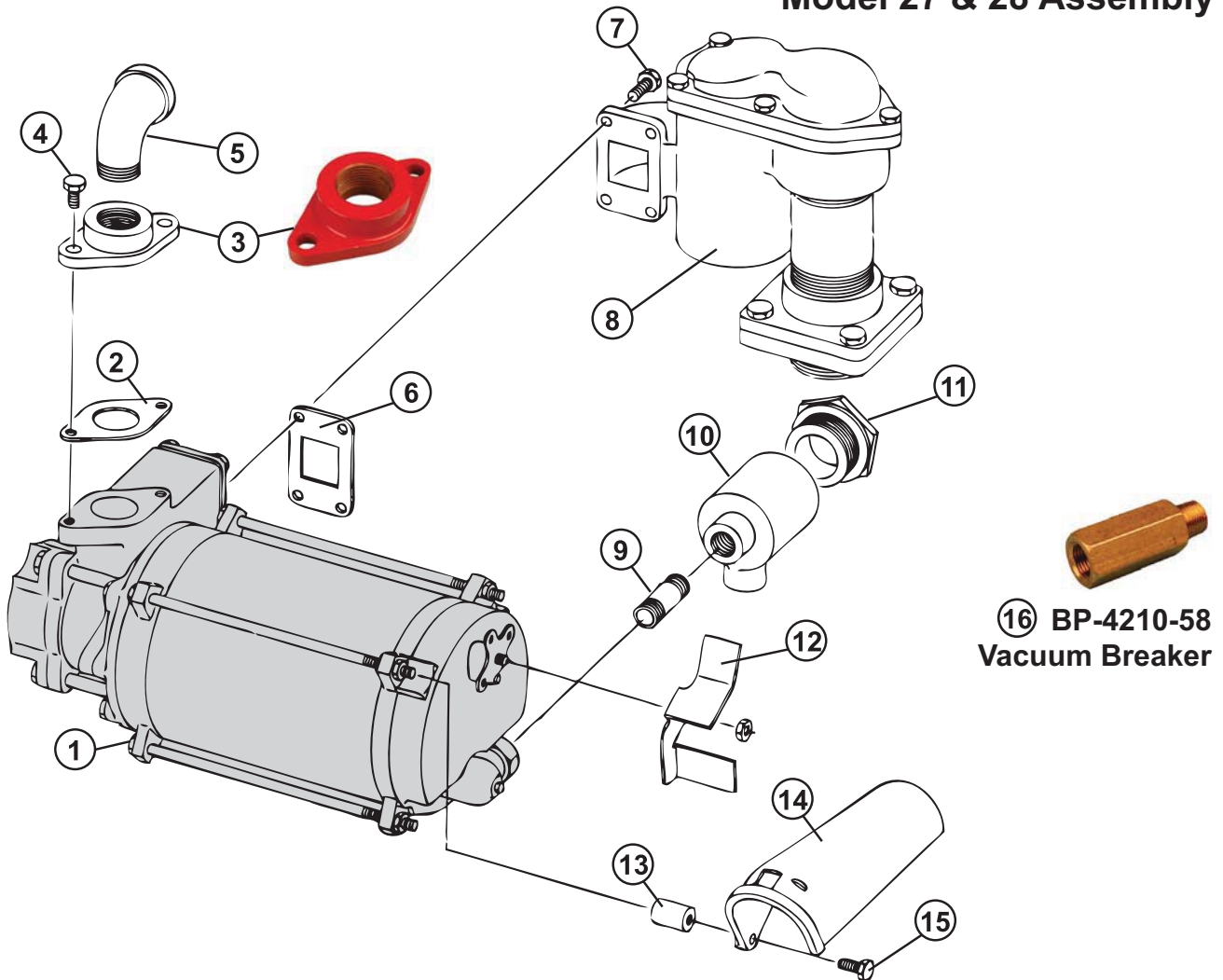
**BP-4210-30KP
 BP-4210-30LS**

20 BP-4210-58 Vacuum Breaker

Item	SVI part #	OEM #	Description
1	BP-4218-26	F37684	Motor, Model 26, 27, 28, 60 Hz.
	BP-4218-27	F37686	Motor, Model 26, 27, 28, 50 Hz.
2	BP-4210-42	026810	Gasket
3	BP-4210-112	051895	Cap Screw, 5/16-18 x 3/4
4	call for details		Meter, Register Assy.
	BP-4210-30KP	S00758	Register Assembly (w/ Dial Glass)
	BP-4210-30LS	S00766	Reg. Assy., Ext. Shaft/Pul (w/ Dial Glass)
5	BP-4210-41	026809	Gasket
6	call for details	003072	Discharge Casting
	call for details	003088	Discharge Casting w/Vacuum Breaker Hole
7	call for details	051900	Cap Screw, 5/16-18 x 7/8
8	BP-4210-44	026812	Gasket
9	BP-4210-112	051895	Cap Screw, 5/16-18 x 3/4"
10	call for details	063357	Strainer Block Assembly, Gasoline
	call for details	063358	Strainer Block Assembly, Diesel

Item	SVI part #	OEM #	Description
11	call for details	021337	Conduit, 1/2 x 2"
12	call for details	003345	Junction Box
13	call for details	003515	Junction Box Cover
14	call for details	034497	Switch Plate
15	call for details	056967	Spacer
16	BP-4210-78	003331	Nozzle Boot
17	BP-4210-112	051895	Cap Screw, 5/16-18 x 3/4
18	call for details	030430	Hose, 1" x 12'
19	call for details	038413	Nozzle with Hook (311-Manual)
	call for details	*003788	Hook Only
	call for details	*053151	Set Screw
	call for details	038412	Alt. Nozzle with Hook (7H-Automatic)
	call for details	*003789	Hook Only
	call for details	*053155	Set Screw
20	BP-4210-58	066534	Vacuum Breaker Assembly, Threaded

**20 Series Models
Model 27 & 28 Assembly**

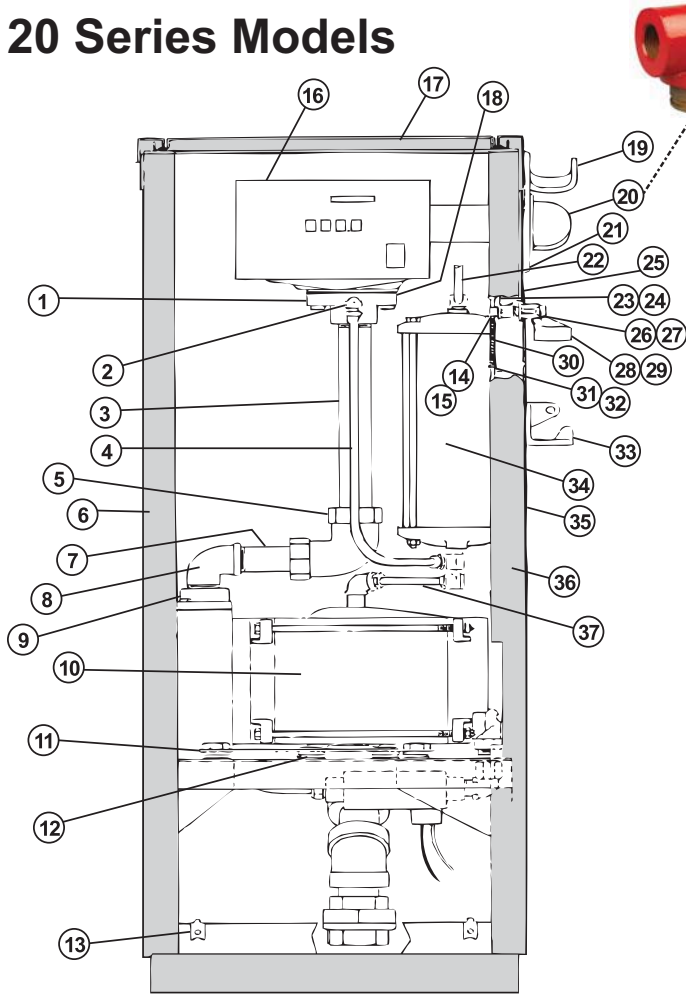


Item	SVI part #	OEM #	Description
1	BP-4218-26	F37684	Motor, Model 26, 27, 28, 60 Hz.
	BP-4218-27	F37686	Motor, Model 26, 27, 28, 50 Hz.
2	BP-4210-42	026810	Gasket
	call for details	030430	Hose, 1" x 12'
	call for details	038413	Nozzle with Hook (311-Manual)
call for details	038412	Alt. Nozzle with Hook (7H-Automatic)	
3	BP-4210-39	003640	Flange
4	BP-4210-112	051895	Cap Screw, 5/16-18 x 3/4"
5	call for details	024941	Street Ell, 1" x 90
	call for details	024933	Discharge Casting w/Vacuum Breaker Hole
6	BP-4210-44	026812	Gasket

Item	SVI part #	OEM #	Description
7	call for details	051900	Cap Screw, 5/16-18 x 7/8"
8	call for details	063357	Strainer Block Assembly, Gasoline
	call for details	063358	Strainer Block Assembly, Diesel
9	call for details	021337	Conduit, 1/2 x 2"
10	call for details	003345	Junction Box
11	call for details	003515	Junction Box Cover
12	call for details	034497	Switch Plate
13	call for details	056967	Spacer
14	BP-4210-78	003331	Nozzle Boot
15	BP-4210-112	051895	Cap Screw, 5/16-18 x 3/4"
16	BP-4210-58	066534	Vacuum Breaker Assy., Threaded (not shown)



20 Series Models



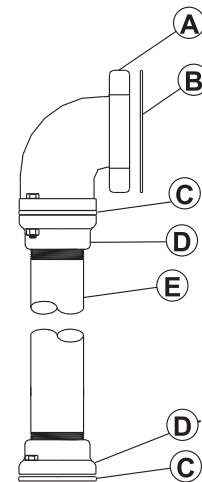
Mechanical Keytrol users, please see the Mechanical Keytrol Breakdown later in this section.

Item	SVI part #	OEM #	Description
16	call for details	037200	Meter & Register US Diesel
	call for details	037228	Meter Register-250AR Liter Cogetil w/External
	BP-4210-30KP	S00758	Register Assembly (w/ Dial Glass)
	BP-4210-30LS	S00766	Reg. Assy., Ext. Shaft/Pul (w/ Dial Glass)
17	call for details	022109	Top Cover
	call for details	022986	Top Cover Assembly (SS)
18	BP-4210-45	026814	Gasket
19	call for details	003740	Hose Hook
20	BP-4210-38	003647	Flange - Hose
21	call for details	003818	Nozzle Boot
22	call for details	065717	Vent Tube Assembly
23	call for details	017571	Cam Assembly
24	call for details	053516	Set Screw 10-32 x 1/4
25	call for details	041715	Scuff Panel
26	call for details	063209	Eccentric Stop
27	call for details	052314	Screw 1/4-20 x 1 Flat HD
28	call for details	051072	Switch Arm Assembly
29	call for details	068281	Spring Washer
30	call for details	057160	Spring
31	call for details	021145	Collar
32	call for details	053140	Set Screw 10-32 x 3/16
33	call for details	003673	Nozzle Hook
34	call for details	026417	Float Chamber Assembly
35	call for details	041716	RH Panel Assembly
	call for details	041746	Right Panel Assembly (Ketrol Pulser)
	call for details	041787	RH Panel Assembly (SS)
36	call for details	026555	Frame
	call for details	026558	Frame 250ARK
37	call for details	063666	Tube Assembly - Return

Model 250, Front View

Item	SVI part #	OEM #	Description
1	call for details	003019	Flange, 25AR
	call for details	003561	Inlet Manifold
2	call for details	026044	Elbow Fitting 3/8" 250AR
3	call for details	045296	Pipe 1" x 12" TOE
4	call for details	065716	Tube Assembly - Supply
5	call for details	024910	Dresser Elbow
	call for details	054207	Dresser Seal
6	call for details	041713	Left Panel Assembly
	call for details	040208	Left Panel Assembly (SS)
	call for details	040239	Left Panel Assembly (Pulser)
	call for details	040238	LH Panel Assembly (SS, Pulser)
	call for details	041731	Left panel Assembly (Keytrol)
7	call for details	045235	Pipe 1" x 4" TOE
8	call for details	024941	ST Elbow 1" x 90° <i>Note: Non-Keytrol/Pulser Units use P/N 044700 1"x16" pipe between meter and pump unit.</i>
9	BP-4210-39	003640	Flange
10	BP-4218-25	F37683	Motor, Model 25 & 250, 60 Hz.
	BP-4218-29	F37685	Motor, Model 25 & 250, 50 Hz.
11	call for details	047115	Motor Platform
12	call for details		Motor Mount Assembly
13	call for details	039610	Speed Nut
14	call for details	063700	Stud-Swivel
15	call for details	049406	Snap Ring

P
a
g
e
6



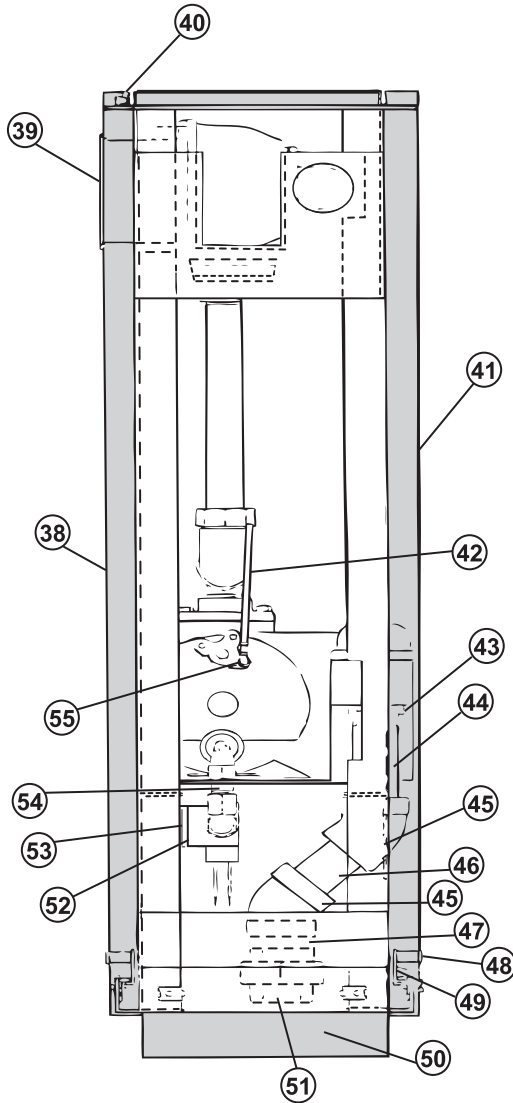
Model 250

Alternate Piping: Units without Float Chamber

Item	SVI part #	OEM #	Description
A	call for details	003561	Manifold Inlet
B	BP-4210-45	026814	Gasket
C	BP-4210-42	026810	Gasket, Inlet Manifold
D	BP-4210-39	003640	Flange
E	call for details	044700	Pipe, TBE 1 x 16

20 Series Models

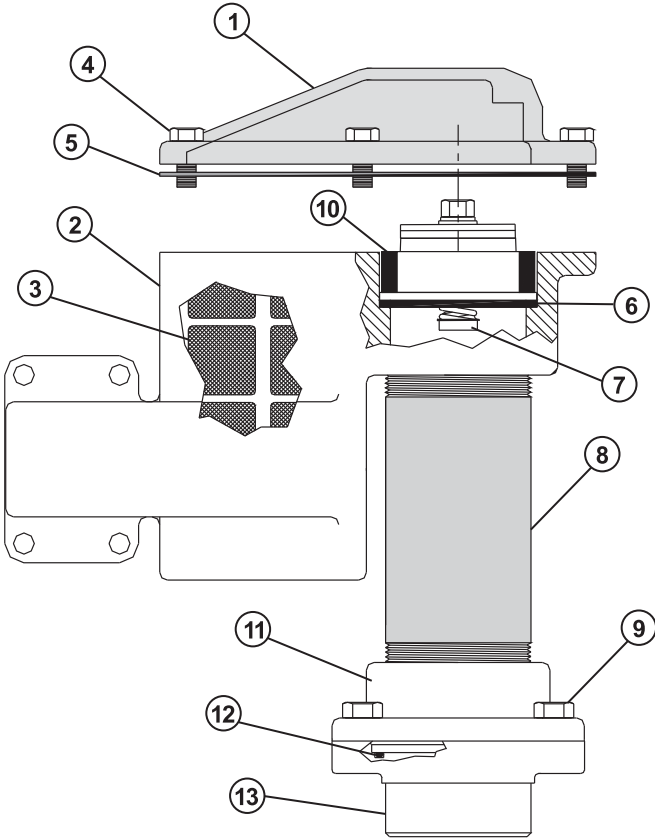
Model 250, Side View



Item	SVI part #	OEM #	Description
38	call for details	041711	Front Panel Assembly
	call for details	041726	Front Panel Assembly (Keytrol, Pulser)
	call for details	040209	Front Panel (SS)
39	call for details	012267	Bezel
40	call for details	020952	Spring Clip
41	call for details	041712	Rear Panel Assembly
	call for details	041727	Rear Panel Assembly (Keytrol, Pulser)
	call for details	041738	Rear Panel Assembly (SS)
42	call for details	050624	Switch Rod Assembly
43	call for details	017271	Bushing
44	call for details	045430	Pipe 1-1/4" x 4 TBE
45	call for details	024947	Elbow 1-1/4" x 45°
46	call for details	044857	Pipe 1-1/4" x 3" TBE
47	call for details	038036	Pipe 1-1/4" x 1"
48	call for details	035010	Lock, w/ Dust Cover
49	call for details	017510	Lock Cam
50	call for details	011607	Base
51	call for details	066387	Union 1-1/4"
52	call for details	003238	Junction Box
53	call for details	003463	Junction Box Cover
54	call for details	021346	Conduit
55	call for details	021040	Clip



Models 25–28 Strainer Block Assembly



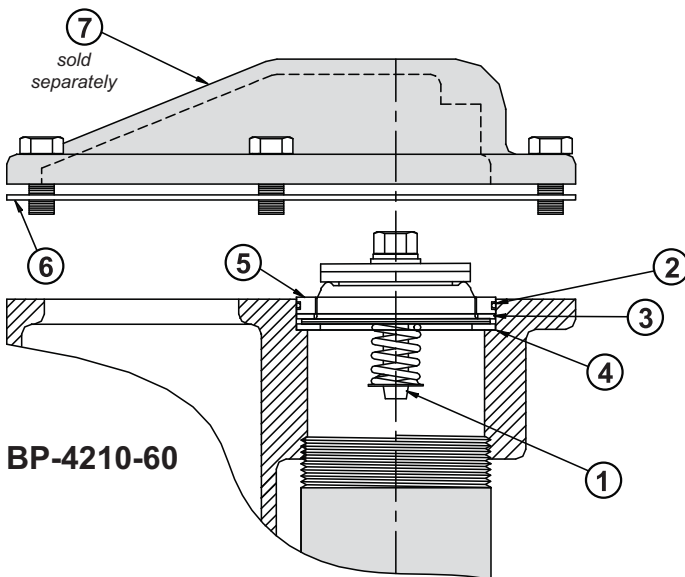
Item	SVI part #	OEM #	Description
1	BP-4210-61	003489	Strainer Cover, 25, 26, 27, 28 & 250
	call for details	003491	Strainer Cover, 250AR only
2	call for details	003207	Strainer Block
3	BP-4210-13	063282	Strainer (Gasoline), 100 Mesh
	BP-4210-14	063283	Strainer (Diesel), 40 Mesh
4	BP-4210-112	051895	Cap Screw, 5/16-18 x 3/4
5	BP-4210-62	027360	Gasket
6	call for details	049136	Square Cut Ring
7	call for details	020620	Check Valve Assembly
8	call for details	044942	Pipe TBE, 2 x 6
9	call for details	052015	Cap Screw, 3/8-16 x 1"
10	call for details	065525	Spacer
11	call for details	003648	Inlet Flange
12	BP-4210-55	049167	O-Ring, 2-1/2 x 2-11/16
13	call for details	003078	Base

NOTE: A design change was made on 6/2/2003 replacing the metal check valve with a plastic check valve. If your pump serial number is 8139213 or older (US Models) or 1028283C or older (Canada models), you must order retrofit kit OEM# 032083 (SVI# **BP-4210-60**). The picture (left) shows kit OEM# 032631.

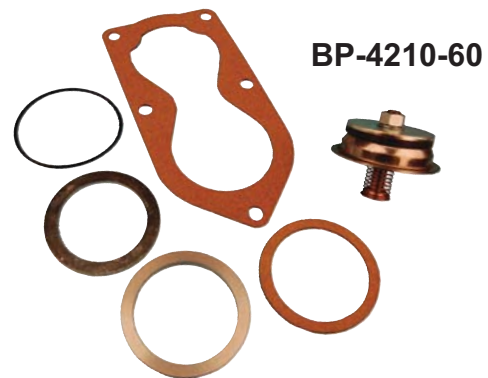
Check Valve Kit for Models 25–28 and 250
OEM# 032083 (SVI# **BP-4210-60**)
See Below

Check Valve Retrofit Kits

Models 25/425, 26/426, 27/428 & 250/4250



BP-4210-60

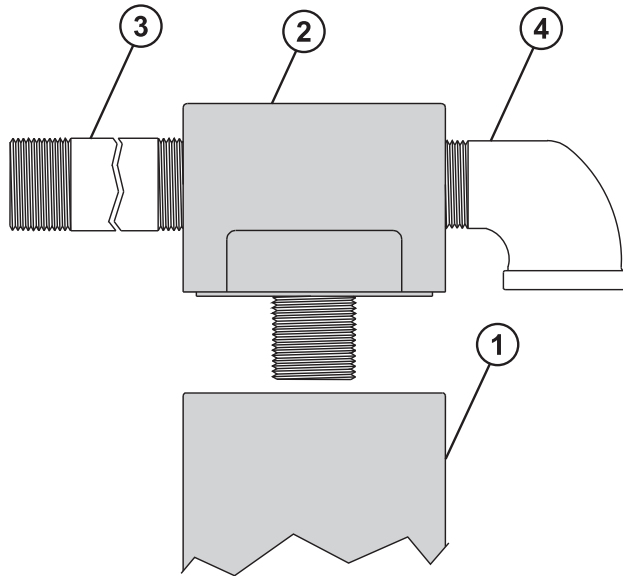


BP-4210-60

Item	SVI part #	OEM #	Description
	BP-4210-60	032083	Check Valve Retrofit Kit (Models 25/425, 26/426, 27/428 & 250/4250)
	call for details	032084	Check Valve Retrofit Kit (Models 250AR/4250AR)
1	BP-4210-67	035319	Check Valve Assembly
2	BP-4210-64	049019	O-Ring
3	BP-4210-65	027301	Gasket
4	BP-4210-66	047202	Check Valve Support Plate
5	BP-4210-63	047201	Upper Check
6	BP-4210-62	027360	Gasket
7*	BP-4210-61	003489	Strainer Cover, 25, 26, 27, 28 & 250
	call for details	003491	Strainer Cover, 250AR only

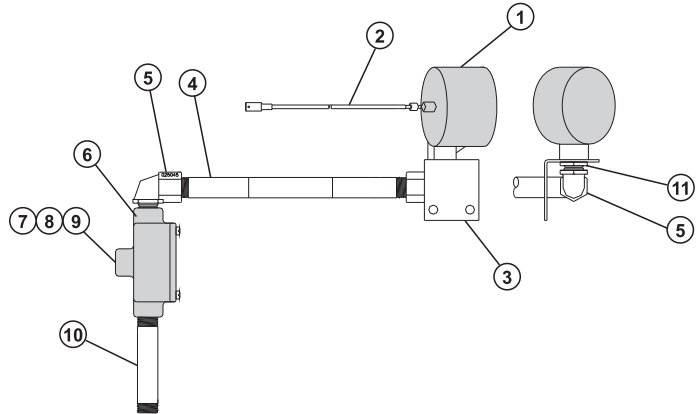
*Item #7 - Strainer is sold separately and is not part of Kit BP-4210-60.

Models 25 & 26 Filter Assembly



Item	SVI part #	OEM #	Description
1	call for details	026018	Filter, Gas
	call for details	026019	Filter, Diesel
2	call for details	003087	Filter Adapter
3	call for details	044579	Pipe TBE, 1 x 5-3/8, Model 25 & 250
	call for details	044614	Pipe TBE, 1 x 7-1/2, Model 26
4	call for details	024941	Street Elbow, 1 x 90°

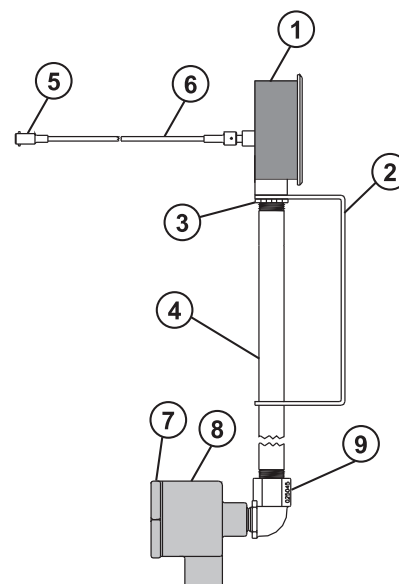
Model 25 Pulser Assembly



Item	SVI part #	OEM #	Description
1	call for details	021788	Pulser, 10:1, VR
2	call for details	017335	Cable Assembly
3	call for details	015077	Bracket, Pulser
4	call for details	021329	Conduit, Offset, 2-15/16 x 9-1/2
5	call for details	025045	Elbow, Conduit, 1/2 x 90 M/F
6	call for details	Z10186	Junction Box
7	call for details	052976	Screw, 10-32 x .375, SL BH
8	call for details	067500	Washer, Brass, Cupped
9	call for details	047212	Plug, Conduit, 1/2" w/Ground Screw
10	call for details	021364	Conduit 1/2 x 3-1/2
11	call for details	039130	Nut, Conduit Lock

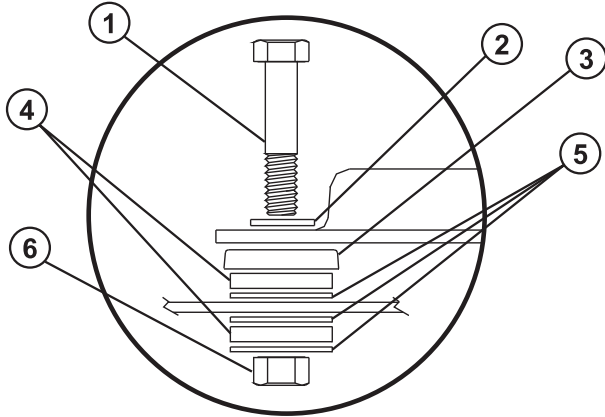
Model 250 Pulser Assembly

Item	SVI part #	OEM #	Description
1	call for details	021788	Pulser, 10:1, VR
2	call for details	014639	Bracket
3	call for details	039130	Nut, Conduit Lock, 1/2"
4	call for details	021454	Conduit, Pulser, Left Side
5	call for details	043210	Pin, Spirol
6	call for details	017335	Cable Drive Assembly
7	call for details	003515	Junction Box Cover, Mach.
8	call for details	003345	Junction Box
9	call for details	025045	Elbow, Conduit, 1/2 x 90°, M/F





Model 250 Motor Mount Assembly

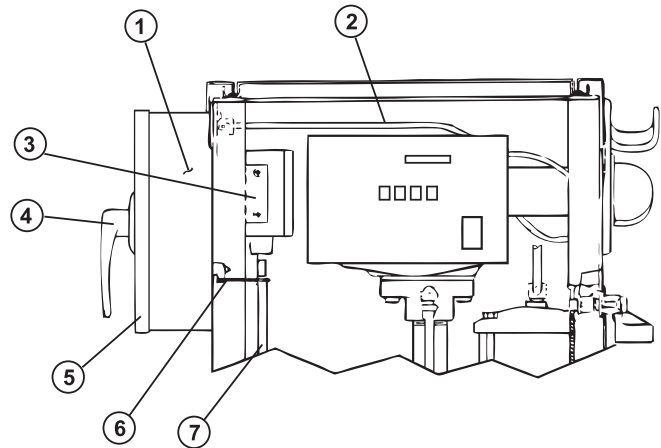


Item	SVI part #	OEM #	Description
1	call for details	051940	5/16-18 x 1-1/2 HHC Screw
2	call for details	068080	5/16 Washer
3	call for details	067735	Cup Washer
4	call for details	037885	Rubber Mount
5	call for details	068620	Washer
6	BP-4217-11	038920	5/16-18 Hex Lock Nut

Vacuum Breaker Kits

SVI part #	OEM #	Description
call for details	032698	Model 25
call for details	032699	Model 26
call for details	032798	Models 27 & 28

Model 250 - Mechanical Keytrol Breakdown



Item	SVI part #	OEM #	Description
1	call for details	032489	Keytrol, 10K
2	call for details	055254	Keytrol Drive Cable Assembly
3	call for details	064376	Switch Assembly and Conduit
4	call for details	029415	Locking Handle Assembly
5	call for details	024407	Door Assembly
6	call for details	010009	Switch Activator Assembly
7	call for details	021412	Cable, MI 54" x 2 x 14AWG

Repair Kit for Series 25-26

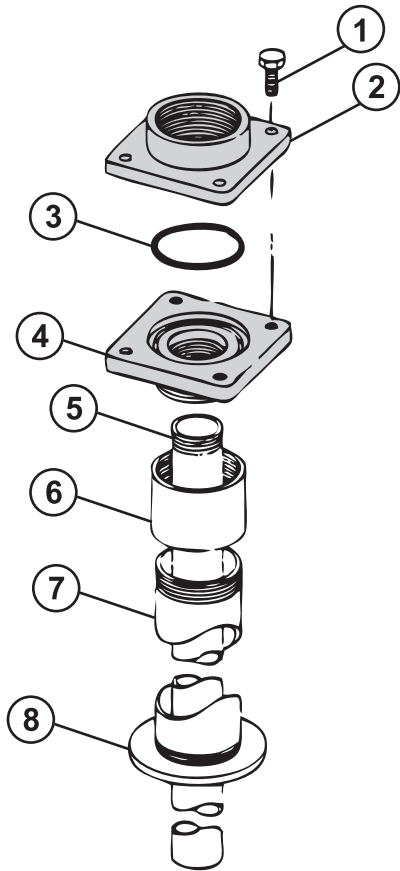
SVI part #	OEM #	Description
BP-4210-02	032892	Repair Kit for Series 25-26 (old style)
BP-4210-02N	032892	Repair Kit for Series 25-26 (new style)
BP-4210-40	014095	Bearing - Seal Stuffing Box
BP-4210-41	026809	Gasket, Discharge Flange
BP-4210-42	026810	Gasket, Inlet Manifold
BP-4210-43	026811	Gasket, Bypass Valve
BP-4210-44	026812	Gasket, Strainer Block
BP-4210-45	026814	Gasket
BP-4210-46	028736	Dial Glass
BP-4210-47	031345	Key, Spring
BP-4210-48	048865	O-Ring, 5/32 x 9/32, Buna-N
BP-4210-49	048895	O-Ring, 5/16 x 7/16, Buna-N
BP-4210-33	048941	O-Ring, .612ID x .103W
BP-4210-50	036995	Meter-Parts Stuffing Box
BP-4210-51	049062	O-Ring, 1-11/16 x 1-7/8, Buna-N
BP-4210-52	049063	O-Ring, 6 x 6-3/16, Buna
BP-4210-53	049180	O-Ring, 3 x 3-1/4 Buna-N
BP-4210-54	054512	Drive Shaft Assembly
BP-4210-07	067061	Vane for series 25-26
BP-4210-07-5		Vanes (5-pack)
BP-4210-55	049167	O-Ring, 2-1/2 x 2-11/16, Buna-N
BP-4210-60	032083	Check Valve Retrofit Kit, Model 25-28, 250
BP-4210-29 / 29N	054030	20 Series Seal Kit (old style / new style)



Seal Kit (new style)
BP-4210-29N
will be used in BP-4210-02N instead of BP-4210-29

P
a
g
e
10

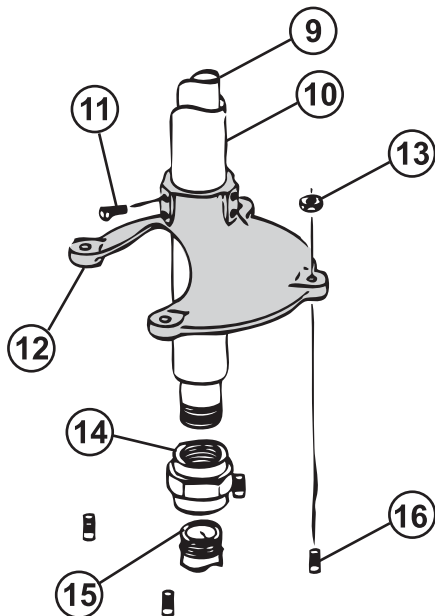
Models 25–28 Mounting Hardware



Direct Mount

Item	SVI part #	OEM #	Description
1	call for details	052015	Cap Screw
2	call for details	003648	Top Flange
3**	BP-4210-55	049167	O-Ring 2-1/2" ID
4	call for details	003078	Bottom Flange
5	call for details	044010	Suction Pipe
6	call for details	021970	Coupling, 2"
7	call for details	045535	Pedestal Pipe, 2"
8	call for details	N/A	Tank Flange

** Part is included in Repair Kit BP-4210-02 (OEM # 032892)



Pedestal Kit (OEM # 032039)

Item	SVI part #	OEM #	Description
9	call for details	044010	Suction Pipe
10	call for details	045535	Pedestal Pipe, 2" Dia.
11	call for details	053320	Set Screw
12	call for details	003055	Pedestal Base
13	call for details		Nut (customer-supplied)
14	call for details	066387	Union
15	call for details		Suction Pipe (customer-supplied)
16	call for details		Anchor Bolts (customer-supplied)



Gasboy Quick Reference

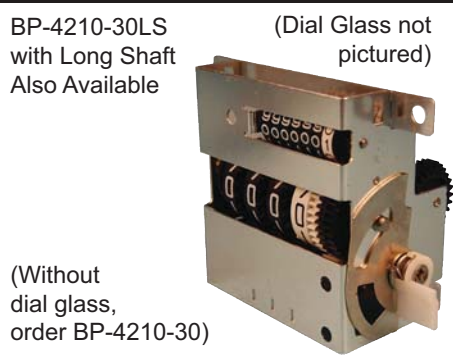
<p>BP-4210-02 Repair Kit - 20 Series (old style)</p> <p>For new style, order BP-4210-02N</p>	<p>BP-4210-01 Repair Kit for 1800, 70, 390</p>	<p>BP-4211-03 Repair Kit for 60 Series</p>
<p>BP-4210-29 Seal Kit (old style) - 20 series</p>	<p>BP-4210-29N Seal Kit (new style) - 20 series</p>	<p>BP-4211-13 Seal Kit - 60 Series</p>
<p>BP-4210-20 Gasket (OEM #M05618B001 / 027055)</p>	<p>BP-4210-07-5 Vaness (5-pack) - Series 20-26</p>	<p>BP-4211-07 Vane - 60 Series</p>
<p>BP-4210-56 Rotor for 20 Series</p>	<p>BP-4211-04 Rotor - 60 Series</p>	<p>BP-4210-22 Rotor for 70 Series, 1800 & 390</p>

Gasboy Quick Reference

BP-4210-28
Check Valve Assy.



BP-4210-30KP
Meter Register with Dial Glass



BP-4211-36
Brush/Switch Replacement Kit



BP-4210-23
Seal Kit for 70 Series & 1820



BP-4217-05
Repair Kit for 1720A, 1520 & 787



BP-4218-07A
Switch & Protector 4 Terminal



BP-4210-60
Check Valve Retrofit Kits



BP-4212-21
Left Wheel for 1860 Register



BP-4212-20
Center Wheel for 1860 Register



BP-4212-04
Meter Bezel - 4860



BP-4212-40
Meter Bezel - Round (70 Series)



BP-4210-80
Bypass Stem Assembly 70/1800





Gasboy Quick Reference

BP-4210-68

Nozzle Hanger 1820



BP-4212-34

Round Dial Mask - Gallons



BP-4212-73

Toggle Switch for Motor 70 Series



BP-4214-07

Vane - Carbon



BP-4212-02

Repair Kit for 1860 Register



BP-4217-10

Repair Kit for 1700 Series



BP-4218-30R

Nozzle Boot - 70 Series (Red)



BP-4210-58

Vacuum Breaker Assembly



BP-4211-23

Vacuum Breaker Assembly



BP-4218-20

Motor for 70 Series

(Available in Red, White or Beige)



1/3 HP Motor 60Hz. 48 Frame

BP-4218-28

Motor for 1800 Series



1/3 HP Motor 60Hz. 48 Frame

BP-4218-25 and BP-4218-26

60 Hz. Motors for 20 Series



BP-4218-25 Motor for Models 25 & 250
BP-4218-26 Motor for Models 26, 27, 28

Gasboy Quick Reference

BP-4210-67
Check Valve Assembly



BP-4211-08
Check Valve - 60 Series



BP-4210-04
Seal Kit - 600 Series



BP-4212-17
Reset Bearing



BP-4212-18
Reset Button



BP-4212-03
Repair Kit for 4860 Register



**TERMS AND CONDITIONS OF THE
SALES ORDER
FOR SVI INTERNATIONAL, INC.**

1. **GENERAL.** The terms and conditions of sales order outlined herein shall apply to the sale by SVI INTERNATIONAL, INC. (hereinafter referred to as "Company") of the items described on the facing page (hereinafter referred to as "Merchandise") to Purchaser.
2. **DELIVERY.** Delivery shall be deemed to be complete when the Merchandise has been shipped F.O.B. Company's plants in DeKalb, Illinois, Duarte, California; and Baltimore, Maryland ("Company's plants"). Shipments are subject to delays from causes or contingencies beyond the reasonable control of the Company. When otherwise not specified, shipments will be made in standard containers via carrier which, in the judgment of the Company, will result in the most practical method. Title and right of possession will pass to the Purchaser upon receipt by the carrier at the shipping point. If a customer of the Company should specify a specific carrier's method of shipment (i.e. UPS Next Day Air) and that carrier does not perform to the customer's expectations, freight credit to a customer's account will not be issued unless the Company can first obtain a credit.
3. **RISK OF LOSS.** Identification of the Merchandise under Uniform Commercial Code (hereinafter referred to as "UCC") Section 2-501 shall take place at the moment of shipment F.O.B. Company's plants. Risk of loss shall pass to the Purchaser when the Merchandise is shipped from the Company's plants.
4. **TITLE.** Title to the merchandise shall transfer to the Purchaser when the Merchandise is shipped from the Company's plants.
5. **WARRANTIES.** The Company guarantees its products to be free from defects in workmanship and raw materials for a period of one year from date of purchase. THIS WARRANTY IS EXPRESSLY IN LIEU OF ANY AND ALL WARRANTIES EXPRESS OR IMPLIED. COMPANY DOES NOT WARRANT THE MERCHANDISE IS MERCHANTABLE OR FIT FOR ANY PARTICULAR PURPOSE. Company's liability for breach of the terms of this Agreement, including any warranty, is limited to either refund of the invoice price of the Merchandise or at Company's option, replacement of the Merchandise free of charge, including transportation charges but not including the cost of labor. Purchaser has not relied on any statement or upon the conduct of Company with respect to the prospective use of the merchandise. Company shall not be liable for and Purchaser waives any and all claims for any loss or damage, directly or indirectly, arising from the use of the Merchandise and for punitive, incidental or consequential damages, including, but not limited to, damages to property, for loss of use, loss of time, loss of profit or loss of income. The Company does not authorize the sale of our products under any other warranty, expressed or implied.
6. **SETOFF.** All claims for money due or to become due from the Company shall be subject to deduction by the Company for any setoff or counterclaim arising out of this or any other claims of the Company or its affiliated companies, whether such setoff or counterclaim arose before or after any assignment by Purchaser.
7. **INDEMNIFICATION.** Purchaser agrees to indemnify the Company and hold it harmless from and against all claims, liability, loss, damage or expense, including reasonable counsel fees, arising from or by reason of any modifications or alterations made by Purchaser. If a customer of the Company modifies or alters any part, in any manner whatsoever, or uses any part in departure from recommended performance specifications, said customer agrees to indemnify and hold the Company harmless from and against all liability and expenses based on damage to property or injury to or death of any person arising out of or attributable to such modified or altered part. Further, the Company will not accept any such modified or altered part for credit to a customer's account.
8. **FREIGHT POLICY.** Freight charges on individual orders less than \$3,000 in net value are prepaid and added to invoice or collect F.O.B. shipping point. Freight charges (standard ground service and continental US only) on individual orders more than \$3,000 net value are paid by the Company F.O.B. shipping point. Note: customers with C.O.D. terms are responsible for all carrier C.O.D. fees regardless of order net value.
9. **RETURN POLICY.** To return parts for credit or inspection Purchaser must first contact the Company to obtain a Return Goods Authorization number (RGA#). Once Purchaser has obtained an RGA# the parts can be returned freight prepaid only. The RGA# must be on the outside of the container in a highly visible location. All parts must be returned freight prepaid and the shipment must include a letter of explanation giving the specific reason for return including details as to the conditions under which the part or parts operated. Note: parts returned without an RGA#, freight collect or without written explanation may be refused. Parts which have been used in any way or manner, including any installation or incorporation into a lift or hoist, shall NOT be eligible for return whether or not an RGA has been assigned.
10. **RESTOCK CHARGE.** Returns are subject to up to twenty-five (25%) restocking charge. Refusals are subject to the same restocking charge plus the cost of outbound and return freight charges and/or fees incurred by the Company due to shipment refusal.
11. **PRICES AND PAYMENTS.** All prices are subject to change without notice. All prices are F.O.B. shipping point. The Company standard terms are net 30 days, C.O.D. company check, C.O.D. cash, VISA, MasterCard, Discover or American Express. However, if in the judgment of the Company, the financial condition of the Purchaser at any time does not justify shipment according to standard terms of payment, the Company may require full or partial payment in advance.
12. **INTERPRETATION.** This sales order is intended by the parties as a complete and exclusive statement of the terms of their agreement. It supersedes all prior agreements, written or oral. No course of prior dealings between the parties and no usage of the trade shall be relevant to supplement or explain any terms used in this sales order. Acceptance or acquiescence in a course of performance rendered under this purchase order shall not be relevant to determine the meaning of this sales order even though the accepting or acquiescing party has knowledge of the nature of the performance and opportunity for objection. Whenever a term defined by the UCC is used in this sales order the definition contained in the UCC shall control.
13. **MODIFICATION.** This sales order can be modified or rescinded only by a writing signed by both parties.
14. **WAIVER.** No claim or right arising out of a breach of this sales order can be discharged in whole or in part by a waiver or renunciation of the claim or right unless such waiver or renunciation is supported by consideration and is in writing signed by the aggrieved party.
15. **ASSIGNMENT.** No right or interest in this sales order shall be assigned by either party without the written consent of the other and no delegation of any obligation owed, or of the performance of any obligation by either the Company or Purchaser shall be made without the written consent of the other party. Any attempted assignment or delegation not made in conformity with this paragraph shall be wholly void and totally ineffective for all purposes.
16. **TIME TO PERFORM AND BRING ACTION.** Time is of the essence of this sales order. Any action for breach of this sales order shall be commenced within two (2) years after the cause of action has accrued. Any party who loses any litigation shall reimburse the other party for costs including reasonable attorneys fees. The exclusive jurisdiction for any legal action shall be the Circuit Court of DeKalb County, Illinois.
17. **APPLICABLE LAW.** This sales order shall be governed by the UCC of Illinois as effective and in force on the date of this sales order.

Offering the Best in Automotive Lift Repair Parts and More!

Auto Lift Cables • Auto Lift Parts • Brake Lathe Repair Parts
Compressed Air Repair Parts • Exhaust System Products • Fluid Delivery Repair Parts
Lubrication Equipment Repair Parts • Repair Parts for Gasboy Consumer Series
Service Station Pump and Tank Products • SVI Misc Auto Lift Products and Catalogs
Tire Changer Repair Parts • Vehicle Lifting Systems • Wheel Balancer Accessories

Serving the Industry Since 1977 • Same-Day Shipping



SVI International, Inc.
(800) 321-8173 • fax: (800) 899-1784
155 Harvestore Drive • DeKalb, IL 60115
www.sviinternational.com

BALTIMORE • CHICAGO • LOS ANGELES