

# Automotive Lift

R E P A I R P A R T S



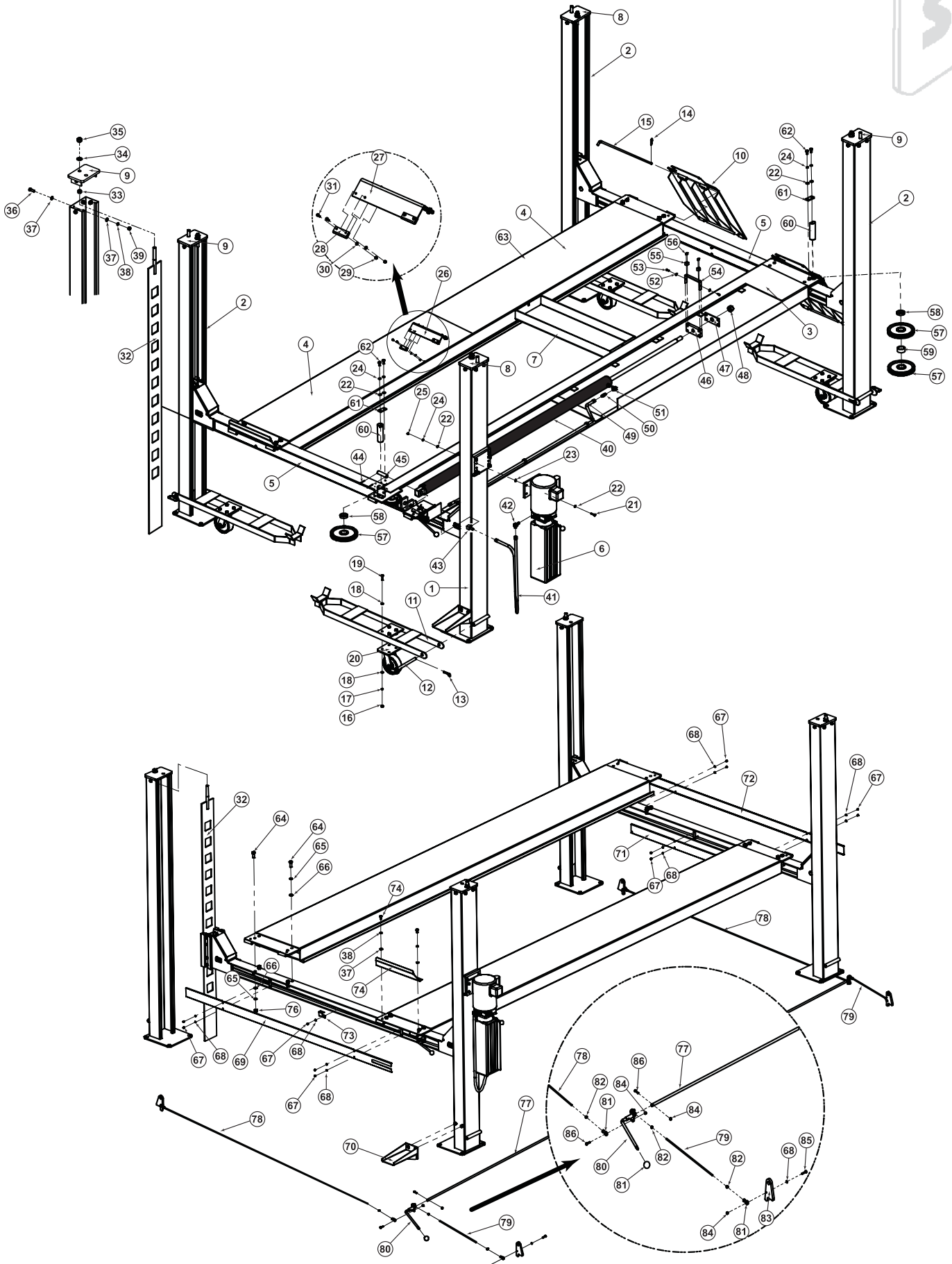
**SVI International, Inc.**  
**(800) 321-8173 • fax: (800) 899-1784**  
155 Harvestore Drive • DeKalb, IL 60115  
**[www.sviinternational.com](http://www.sviinternational.com)**

**BALTIMORE • CHICAGO • LOS ANGELES**

Repair Parts for: **Direct Lift**

Repair Parts for:  
**Direct Lift**  
LRC7270

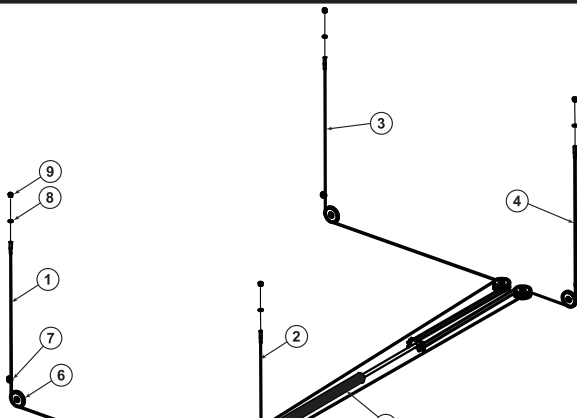
for lift model PP9 Plus



## for lift model PP9 Plus

Item	SVI part #	OEM #	Req	Description
1	BH-7273-073	SH4D-1000	1	Column Weldment, Power Unit
2	BH-7273-074	SH4D-1100	3	Column Weldment, Pin
3	BH-7273-075	SH4D-3000	1	Runway, Driver Side (Main Side)
4	BH-7273-076	SH4D-3200	1	Runway, Passenger Side (Off Side)
5	BH-7273-077	SH4D-2100	2	Crossbeam Weldment
6	BH-7006-01	44100	1	Hydraulic Power Unit
7	call for details	SH4D-8050	1	Jack Tray Parts Box
8	BH-7273-078	SH4D-1500	2	Top Cap A
9	BH-7273-079	SH4D-1500DC	2	Top Cap B
10	BH-7273-080	SH4D-6000	2	"Drive On" Ramp
11	BH-7273-081	SH4D-7000	4	Caster Frame
12	BH-7273-082	SH4D-7100	4	Caster Frame Pin
13	BH-7273-083	H4D-5006-3	4	Cotter Pin
14	BH-7273-084	SH4D-8003	2	Cotter Pin
15	BH-7273-085	SH4D-8002	2	Pivot Shaft, Ramp Pin
16	call for details	B30-10	16	Nut M10
17	call for details	B40-10	16	Lock Washer Ø10
18	call for details	B41-10	32	Flat Washer Ø10
19	call for details	B10-10x35	16	Bolt M10x35
20	BH-7273-086	B80-6x2A	4	Polyurethane - Caster Wheel Ø6"x2"
21	call for details	B10-8x35	4	Bolt M8x35
22	call for details	B41-8	52	Flat Washer Ø8
23	call for details	30400-1999	4	Washer
24	call for details	B40-8	16	Lock Washer Ø8
25	call for details	B30-8	8	Nut M8
26	BH-7273-010	H4P-R3100	2	Wheel Chock
27	BH-7273-011	H4P-R3101	2	Angle Iron
28	BH-7273-012	H4P-R3102	8	Rubber
29	call for details	B30-5	8	Nut M5
30	call for details	B41-5	8	Flat Washer Ø5
31	call for details	B23-5x16	8	Discal Head Screw M5x16
32	BH-7273-087	SH4D-4000HJ	4	Lock Ladder
33	call for details	NH4D-3303	4	Jam Nut
34	call for details	B41-20	8	Flat Washer Ø20
35	call for details	B30-20	4	Nut M20
36	call for details	B10-12x35	16	Bolt M12x35
37	call for details	B41-12	36	Flat Washer Ø12
38	call for details	B40-12	20	Lock Washer Ø12
39	call for details	B30-12	16	Nut M12
40	BH-7273-088	YG36-9100G	1	Hydraulic Cylinder
41	BH-7273-019	1WB-05	1	Hydraulic Hose A - "Wire Braided"
42	BH-7270-024	SW-002(30400-9053YZ)	1	Fitting with O-Ring
43	BH-7273-021	H4D-Y003	1	90° Bulkhead Fitting

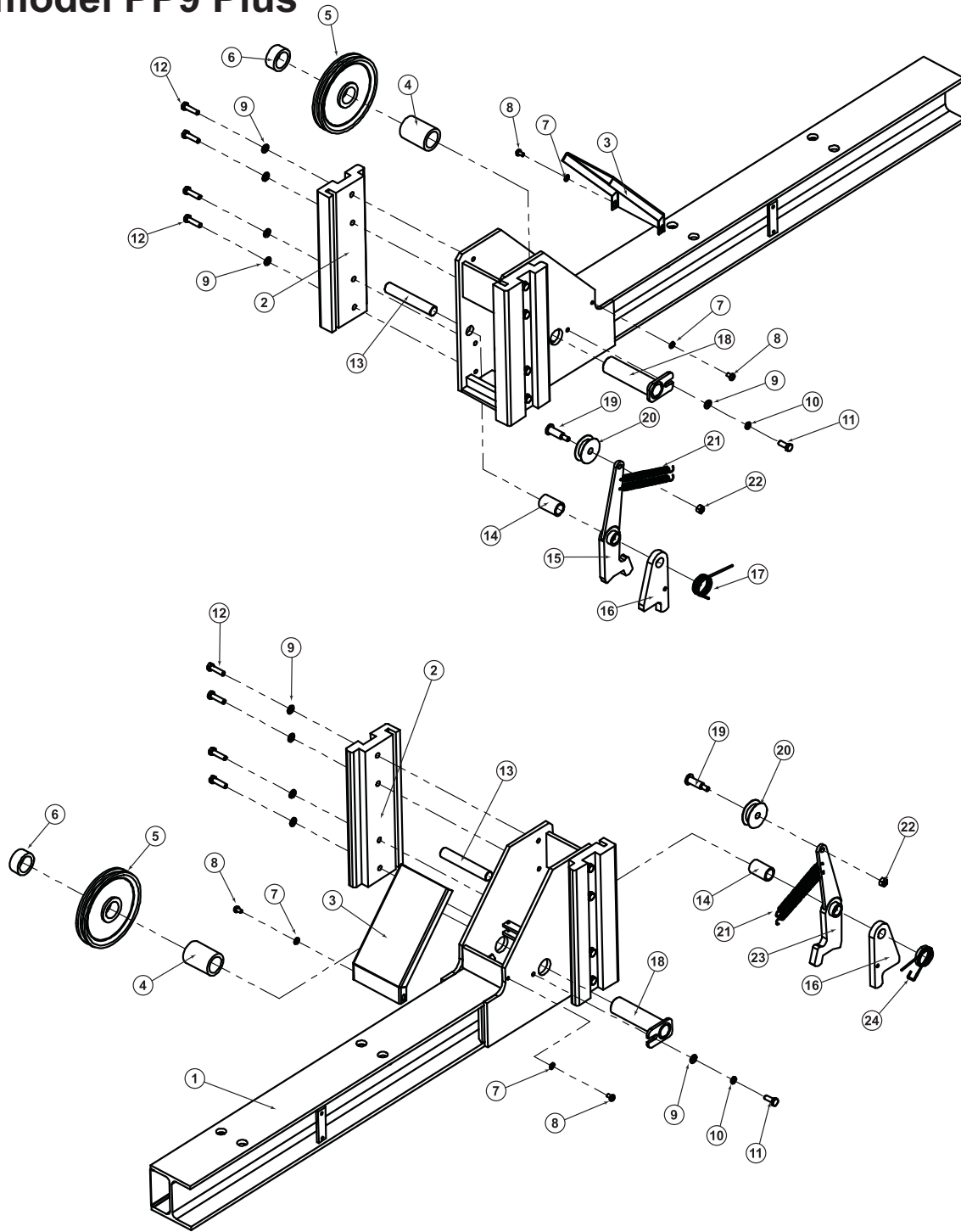
44	call for details	B52-4x50	2	Cotter Pin Ø4x50
45	BH-7273-089	SH4D-8030	1	Cylinder Pin
46	BH-7273-090	NH4D-2021	1	Cable Lock Plate A
47	BH-7273-091	NH4D-2022	1	Cable Lock Plate B
48	call for details	B33-27x2	1	Nylon Lock Nut M27x2
49	BH-7273-092	SH4D-8010	1	Hydraulic Hose B - 79.5"
50	BH-7273-093	SH4D-9200G	1	Throttle
51	BH-7273-017	PP7-9802-2	1	90° Fitting
52	call for details	B42-6	2	Fender Washer Ø6
53	call for details	B20-6x16	2	Screw M6x16
54	BH-7273-094	NH4D-2030A	1	Cable Lock Bracket
55	BH-7273-095	NH4D-2030B	2	Button
56	call for details	B20-4x8	4	Screw M4x8
57	BH-7273-096	SH4D-2002	10	Cable Sheave
58	BH-7273-097	NH4D-2002	4	Bushing E, Spacer
59	BH-7273-098	NH4D-1012	2	Bushing F, Spacer
60	BH-7273-099	SH4D-3001	4	Runway Cable Sheave Shaft
61	BH-7270-090	NH4D-2005	4	Locating Plate
62	call for details	B10-8x16	8	Bolt M8x16
63	BH-7273-100	SH4D-8000	2	Cover
64	call for details	B11-16x40	16	Bolt M16x40 Grade 8.8
65	call for details	B40-16	16	Lock Washer Ø16
66	call for details	B41-16	16	Flat Washer Ø16
67	call for details	B23-6x10	22	Screw M6x10
68	call for details	B41-6	26	Flat Washer Ø6
69	BH-7273-102	SH4D-2011	1	Cover Plate B
70	BH-7273-104	SH4D-1600	1	Foot Plate
71	BH-7273-103	NH4D-1142	2	Cover Plate C
72	BH-7273-101	SH4D-2010	1	Cover Plate A
73	BH-7273-105	NH4D-4006	2	Bracket, Crossbeam
74	BH-7273-106	SH4D-8001	2	Wheel Stop
75	call for details	B10-12x20	4	Bolt M12x20
76	call for details	B31-16	8	Nut M16, Grade 8.8
77	BH-7273-107	SH4D-5001	1	Safety Release Handle A ("T" Rod)
78	BH-7273-108	SH4D-5003	2	Connecting Rod A
79	BH-7273-109	SH4D-5004	2	Connecting Rod B
80	BH-7273-110	SH4D-5002	1	Safety Release Handle B (Handle Rod)
81	BH-7270-115	B84-35	1	Plastic Knob Ø35xM10
82	call for details	B30-6	8	Nut M6
83	BH-7273-111	NH4D-1003	4	Latch
84	call for details	B33-6	9	Nylon Lock Nut M6
85	call for details	B10-6x30	4	Bolt M6x30
86	call for details	B10-6x25	5	Bolt M6x25
87	call for details	B72-6	8	Swiver Joint M6



### cable routing and components

Item	SVI part #	OEM #	Req	Description
1	BH-7273-112	SH4D-8020-4	1	Cable A-3/8"x365.8"
2	BH-7273-113	SH4D-8020-3	1	Cable B-3/8"x306.5"
3	BH-7273-114	SH4D-8020-2	1	Cable C-3/8"x185.5"
4	BH-7273-115	SH4D-8020-1	1	Cable D-3/8"x126.4"
5	BH-7273-088	YG36-9100G	1	Hydraulic Cylinder
6	BH-7273-096	SH4D-2002	10	Cable Sheave
7	BH-7273-116	NH4D-1005	4	Plastic Pulley
8	call for details	B41-20	8	Flat Washer Ø20
9	call for details	B33-3/4"-16	4	Nylon Lock Nut 3/4"-16

for lift model PP9 Plus



Item	SVI part #	OEM #	Req	Description
1	BH-7273-077	SH4D-2100	2	Crossbeam Weldment
2	BH-7273-117	SH4D-2004	8	Rub Block
3	BH-7273-118	SH4D-2001	4	Cross Rail, Safety Latch Cover
4	BH-7273-119	NH4D-1013	4	Bushing B
5	BH-7273-096	SH4D-2002	10	Cable Sheave
6	BH-7273-098	NH4D-1012	6	Bushing A
7	call for details	B41-6	26	Flat Washer Ø6
8	call for details	B23-6x10	22	Screw M6x10
9	call for details	B41-8	52	Flat Washer Ø8
10	call for details	B40-8	16	Lock Washer Ø8
11	call for details	B10-8x20	4	Bolt M8x20
12	call for details	B10-8x30	32	Bolt M8x30

Item	SVI part #	OEM #	Req	Description
13	BH-7273-120	NH4D-1009	4	Latch Shaft
14	BH-7273-121	NH4D-1014	4	Bushing
15	BH-7273-122	NH4D-1002	2	Safety Latch A
16	BH-7273-111	NH4D-1003	4	Latch
17	BH-7273-034	NH4D-1004	2	Latch Spring A
18	BH-7273-123	SH4D-2003	4	Cable Sheave Shaft
19	BH-7273-124	NH4D-1006	4	Cable Sheave B Shaft
20	BH-7273-116	NH4D-1005	4	Plastic Pulley
21	BH-7273-037	NH4D-1011	8	Safety Latch Spring
22	call for details	B30-8	8	Nut M8
23	BH-7273-125	NH4D-1002DC	2	Safety Latch B
24	BH-7273-040	NH4D-1004DC2	2	Latch Spring B

All names, numbers, symbols and descriptions are used for reference purposes only. It is not implied that any part listed is the product of these manufacturers; however, some parts may be the actual product of these manufacturers.

**TERMS AND CONDITIONS OF THE  
SALES ORDER  
FOR SVI INTERNATIONAL, INC.**

1. **GENERAL.** The terms and conditions of sales order outlined herein shall apply to the sale by SVI INTERNATIONAL, INC. (hereinafter referred to as "Company") of the items described on the facing page (hereinafter referred to as "Merchandise") to Purchaser.
2. **DELIVERY.** Delivery shall be deemed to be complete when the Merchandise has been shipped F.O.B. Company's plants in DeKalb, Illinois, Duarte, California; and Baltimore, Maryland ("Company's plants"). Shipments are subject to delays from causes or contingencies beyond the reasonable control of the Company. When otherwise not specified, shipments will be made in standard containers via carrier which, in the judgment of the Company, will result in the most practical method. Title and right of possession will pass to the Purchaser upon receipt by the carrier at the shipping point. If a customer of the Company should specify a specific carrier's method of shipment (i.e. UPS Next Day Air) and that carrier does not perform to the customer's expectations, freight credit to a customer's account will not be issued unless the Company can first obtain a credit.
3. **RISK OF LOSS.** Identification of the Merchandise under Uniform Commercial Code (hereinafter referred to as "UCC") Section 2-501 shall take place at the moment of shipment F.O.B. Company's plants. Risk of loss shall pass to the Purchaser when the Merchandise is shipped from the Company's plants.
4. **TITLE.** Title to the merchandise shall transfer to the Purchaser when the Merchandise is shipped from the Company's plants.
5. **WARRANTIES.** The Company guarantees its products to be free from defects in workmanship and raw materials for a period of one year from date of purchase. THIS WARRANTY IS EXPRESSLY IN LIEU OF ANY AND ALL WARRANTIES EXPRESS OR IMPLIED. COMPANY DOES NOT WARRANT THE MERCHANDISE IS MERCHANTABLE OR FIT FOR ANY PARTICULAR PURPOSE. Company's liability for breach of the terms of this Agreement, including any warranty, is limited to either refund of the invoice price of the Merchandise or at Company's option, replacement of the Merchandise free of charge, including transportation charges but not including the cost of labor. Purchaser has not relied on any statement or upon the conduct of Company with respect to the prospective use of the merchandise. Company shall not be liable for and Purchaser waives any and all claims for any loss or damage, directly or indirectly, arising from the use of the Merchandise and for punitive, incidental or consequential damages, including, but not limited to, damages to property, for loss of use, loss of time, loss of profit or loss of income. The Company does not authorize the sale of our products under any other warranty, expressed or implied.
6. **SETOFF.** All claims for money due or to become due from the Company shall be subject to deduction by the Company for any setoff or counterclaim arising out of this or any other claims of the Company or its affiliated companies, whether such setoff or counterclaim arose before or after any assignment by Purchaser.
7. **INDEMNIFICATION.** Purchaser agrees to indemnify the Company and hold it harmless from and against all claims, liability, loss, damage or expense, including reasonable counsel fees, arising from or by reason of any modifications or alterations made by Purchaser. If a customer of the Company modifies or alters any part, in any manner whatsoever, or uses any part in departure from recommended performance specifications, said customer agrees to indemnify and hold the Company harmless from and against all liability and expenses based on damage to property or injury to or death of any person arising out of or attributable to such modified or altered part. Further, the Company will not accept any such modified or altered part for credit to a customer's account.
8. **FREIGHT POLICY.** Freight charges on individual orders less than \$3,000 in net value are prepaid and added to invoice or collect F.O.B. shipping point. Freight charges (standard ground service and continental US only) on individual orders more than \$3,000 net value are paid by the Company F.O.B. shipping point. Note: customers with C.O.D. terms are responsible for all carrier C.O.D. fees regardless of order net value.
9. **RETURN POLICY.** To return parts for credit or inspection Purchaser must first contact the Company to obtain a Return Goods Authorization number (RGA#). Once Purchaser has obtained an RGA# the parts can be returned freight prepaid only. The RGA# must be on the outside of the container in a highly visible location. All parts must be returned freight prepaid and the shipment must include a letter of explanation giving the specific reason for return including details as to the conditions under which the part or parts operated. Note: parts returned without an RGA#, freight collect or without written explanation may be refused. Parts which have been used in any way or manner, including any installation or incorporation into a lift or hoist, shall NOT be eligible for return whether or not an RGA has been assigned.
10. **RESTOCK CHARGE.** Returns are subject to up to twenty-five (25%) restocking charge. Refusals are subject to the same restocking charge plus the cost of outbound and return freight charges and/or fees incurred by the Company due to shipment refusal.
11. **PRICES AND PAYMENTS.** All prices are subject to change without notice. All prices are F.O.B. shipping point. The Company standard terms are net 30 days, C.O.D. company check, C.O.D. cash, VISA, MasterCard, Discover or American Express. However, if in the judgment of the Company, the financial condition of the Purchaser at any time does not justify shipment according to standard terms of payment, the Company may require full or partial payment in advance.
12. **INTERPRETATION.** This sales order is intended by the parties as a complete and exclusive statement of the terms of their agreement. It supersedes all prior agreements, written or oral. No course of prior dealings between the parties and no usage of the trade shall be relevant to supplement or explain any terms used in this sales order. Acceptance or acquiescence in a course of performance rendered under this purchase order shall not be relevant to determine the meaning of this sales order even though the accepting or acquiescing party has knowledge of the nature of the performance and opportunity for objection. Whenever a term defined by the UCC is used in this sales order the definition contained in the UCC shall control.
13. **MODIFICATION.** This sales order can be modified or rescinded only by a writing signed by both parties.
14. **WAIVER.** No claim or right arising out of a breach of this sales order can be discharged in whole or in part by a waiver or renunciation of the claim or right unless such waiver or renunciation is supported by consideration and is in writing signed by the aggrieved party.
15. **ASSIGNMENT.** No right or interest in this sales order shall be assigned by either party without the written consent of the other and no delegation of any obligation owed, or of the performance of any obligation by either the Company or Purchaser shall be made without the written consent of the other party. Any attempted assignment or delegation not made in conformity with this paragraph shall be wholly void and totally ineffective for all purposes.
16. **TIME TO PERFORM AND BRING ACTION.** Time is of the essence of this sales order. Any action for breach of this sales order shall be commenced within two (2) years after the cause of action has accrued. Any party who loses any litigation shall reimburse the other party for costs including reasonable attorneys fees. The exclusive jurisdiction for any legal action shall be the Circuit Court of DeKalb County, Illinois.
17. **APPLICABLE LAW.** This sales order shall be governed by the UCC of Illinois as effective and in force on the date of this sales order.

***Offering the Best in Automotive Lift Repair Parts and More!***

---

Auto Lift Cables • Auto Lift Parts • Brake Lathe Repair Parts

Compressed Air Repair Parts • Exhaust System Products • Fluid Delivery Repair Parts

Lubrication Equipment Repair Parts • Repair Parts for Gasboy Consumer Series

Service Station Pump and Tank Products • SVI Misc Auto Lift Products and Catalogs

Tire Changer Repair Parts • Vehicle Lifting Systems • Wheel Balancer Accessories

---

***Serving the Industry Since 1977 • Same-Day Shipping***



**SVI International, Inc.**

**(800) 321-8173 • fax: (800) 899-1784**

155 Harvestore Drive • DeKalb, IL 60115

**[www.sviinternational.com](http://www.sviinternational.com)**

**BALTIMORE • CHICAGO • LOS ANGELES**