

# SVI SUPPORTS DISTRIBUTORS



SVI supplies its product line only to Lift Repair Professionals and **DOES NOT** sell to end-users (lift owners) of lift repair products.

Unfortunately, there are other companies in this Industry that sell directly to lift owners, cutting out the Distributor. SVI believes this undermines Distributors, the back bone of our industry.

**This is wrong!**

**For Distributor Support - SVI is your Answer!**



**SVI International, Inc.**  
LIFT REPAIR PARTS

**ATLANTA - BALTIMORE - CHICAGO - LOS ANGELES**

Main Office: 800 Hicks Drive • Elburn, Illinois 60119 • 800-321-8173 • Fax 800-899-1784

**One Phone Call  
Does it All**

Address Service Requested

Elburn, IL 60119  
P.O. Box 70

SVI International, Inc.



BULK RATE  
US Postage  
PAID  
Permit No. 134  
Carol Stream, IL



# The Twin Post

Single Page Update for the S V I Line of  
Automotive Service Equipment Repair Parts - December 1998

**Don't Forget  
to ask about  
the weekly  
Specials**

**1-800-321-8173 = Lift Repair**

**One Phone Call Does it All**

#### 4 "Ready Ship" Warehouses

- Atlanta
- Baltimore
- Chicago
- Los Angeles

#### You Are Invited!

Have you ever visited one of the four SVI "Ready Ship" warehouses?

If so, you have seen first hand exactly how truly dedicated we are to meeting your needs.

If you have not had a chance to visit one of our warehouse facilities, we would welcome and encourage your visit.

You will see a well organized facility and a tremendous amount of Lift Repair Products. Call us to arrange a personal tour. Your hosts will be:

If visiting the Atlanta warehouse

- Warren Fincham

If visiting the Baltimore warehouse

- Ritch Taylor

If visiting the Chicago warehouse

- Brad Snow

If visiting the Los Angeles warehouse

- Sal Sanchez

The four individuals listed above manage each warehouse and take a tremendous amount of pride in the job they do for you.

Support their efforts and give 'em a visit.

Surely, you will come away with a better understanding and feeling about SVI. And, we will certainly know more about what you require from a supplier.



**SVI Encourages Your Phone Calls!**

**In Fact, We Want You to Call Us:**

- to place all your Orders
  - for help locating all Lift Repair Parts
  - about our weekly Specials
    - for Competitive Pricing
    - and for Delivery Information

Old fashioned? Yes! We still believe personal service is important to Lift Repair Professionals. When you call SVI, chances are the first person that answers is the person that can help you.

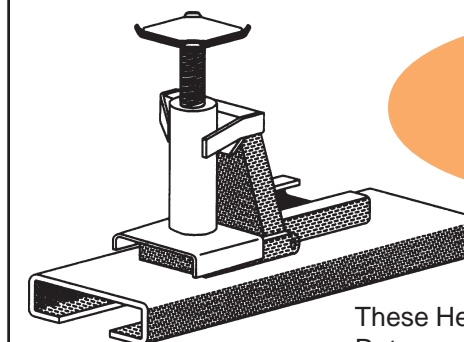
With one simple phone call, you can put SVI to work and move on to your next job. We will ship the parts you need, locate the hard to find parts, price your order competitively and ship from our nearest warehouse to reduce your delivery time and freight costs.

SVI carries an extensive inventory that amounts to thousands of Lift Repair Products. If we don't have what you are looking for, we will try to find it. If it's obsolete, we will produce it for you from your sample. In other words, we will go that extra mile for you everytime.

Do you know of any other single supplier that can meet all your Lift Repair needs?

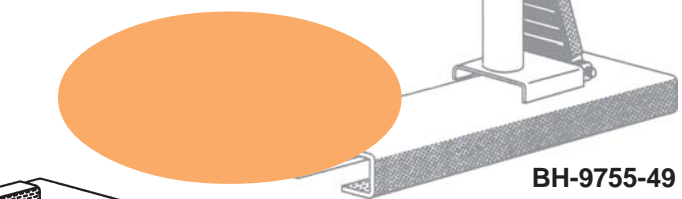
**One Phone Call Does it All**

#### NEW STYLE HEIGHT EXTENSIONS



**BH-9712-07N**

for Western Style Sleeve and Adapter Assemblies



**BH-9755-49**

for Rotary Style Sleeve and Adapter Assemblies

These Height Extensions are designed for use on Rotary and Western Sleeve and Adapter Assemblies. They provide for additional stability and are adjustable from 8" to 12" in height.

Order your Demo set today, your customers will like what they see. Hurry, Sale Ends December 31, 1998

**To Order: 800-321-8173 or 630-365-9250 Fax: 800-899-1784 or 630-365-2809**

All names, numbers symbols and descriptions are used for reference purposes only. It is not implied that any part listed is the product of these manufacturers, however; some parts may be the actual product of these manufacturers.



## TRANSIT BUS LIFTING MADE EASIER!

A major Transit Authority was having a problem lifting different make buses in their fleet with the rear adapters on Weaver and Rotary 12-5/8" cylinder assemblies.

Once the Distributor became aware of the problem, SVI was contacted and asked to help.

After seeing the problem first hand, SVI was able to provide a solution. This problem is not uncommon. In fact, many Transit garages throughout the US and Canada are experiencing similar problems lifting today's buses.

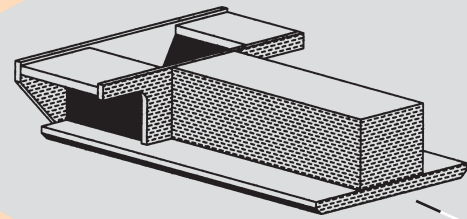
Old style adapters fit old buses. Transit garages, due to design changes, are forced to use many different kinds of adapters for all the various buses they are lifting. This means, time consuming adapter changes are necessary before lifting each bus.

### SVI Provides the Solution!

The objective was to come up with one adapter to do the work of many. The buses in question included a **1989 Neoplan, 1990 RTS, 1992 RTS** and a **1998 RTS Nova**.

SVI was successful in designing new adapters that will work on a multiple of lifting points, one that fits Rotary 12-5/8" rear cylinders and one for the ever popular Weaver and SVI 12-5/8" rear cylinder assemblies.

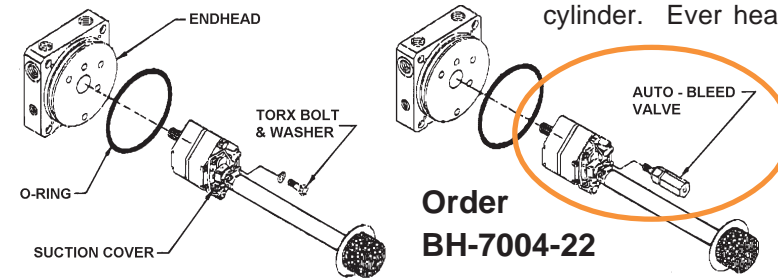
If you have a customer with a special requirement, call SVI first for help. We can generally react much more quickly than others in the Lift Industry - **SVI is your Answer!**



## Power Unit Pointer

### Start Under a Full Load:

Optional Auto-Bleed Valve helps eliminate motor spin under full load conditions. Once installed the Auto-Bleed Valve lets the motor and pump spin-up to full speed before allowing oil flow to the cylinder. Ever heard



from a customer with a Fenner Power Unit that is having trouble trying to start the lift under a full load? This is the answer! The Auto-Bleed Valve installs easily and helps eliminates excessive motor strain under full load conditions.

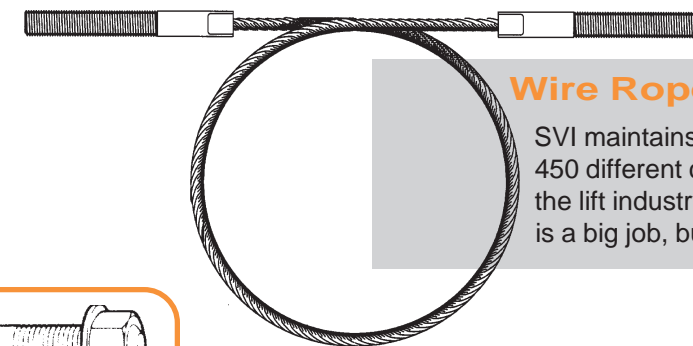
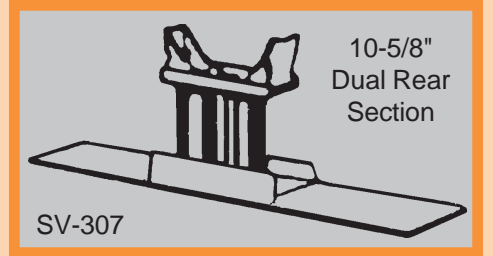
You can solve the problem: call your customers with Fenner Power Units and ask them if they have ever experienced such a problem. If so, you just made another sale for your Service Department. Fits all Fenner Power Units from model P500 and up.

## Heavy Duty Lifts, A Whole Market

Others in the lift industry are scrambling to discontinue popular past models. Due to tremendous Distributor and Transit support, SVI vows to continue making them available for many years to come.

For years, Weaver Lift led the Heavy Duty Lifting Market and now SVI carries on the tradition with models such as the 10-5/8" Dual Rear Cylinder replacement section with a lifting capacity up to 36,000 lbs. Also popular among Transit Authorities and Municipalities are 12-5/8" Rear Cylinder Assemblies with a lifting capacity of up to 25,000 lbs.

Both the 10-5/8" Dual Rear and 12-5/8" units are great for heavy duty lifting applications. SVI has supplied these units to (through Distributors only) many of the Nations larger service facilities as replacement sections and capacity upgrades. In-ground lifts are still the most reliable and long lasting pieces of equipment available. And, with Fiberglass Coating environmental concerns are a moot issue.



### Wire Rope Cable Assemblies

SVI maintains an extensive inventory on the over 450 different cable assemblies currently known to the lift industry. Keeping track of all these cables is a big job, but someone's gotta do it!

## 4 Post Lifts: Stop the Swinging

The crossbeams on many 4 Post Lifts can sway back and forth during operation.

SVI now supplies an Anti-Sway Kit for use on Forward, Grand, Alamo and most of the other Texas style 4 Post Lifts.

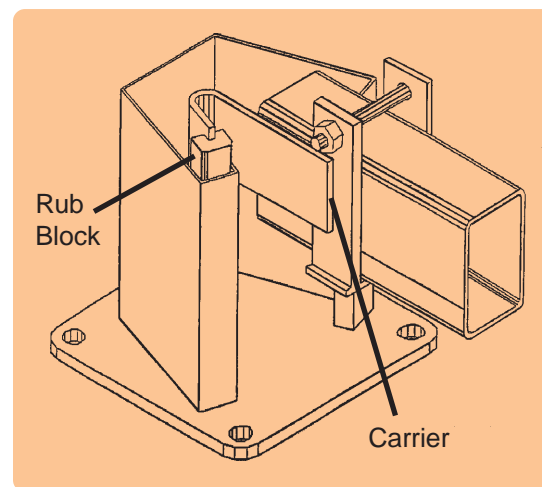
The kit installs easily. Simply secure the nylon rub block carrier to the crossbeam. The rub block seats into the corner of the column and prevents sway, as shown below.

Increase your service business and look like a hero by installing these kits for your 4 Post customers.

One kit per lift.

Order: **BH-7237-50**

Price Each: **\$125.00**



## SAVE ON WEDGE ANCHORS



**BH-7075-03**  
3/4" x 5-1/2"  
Carbon Steel

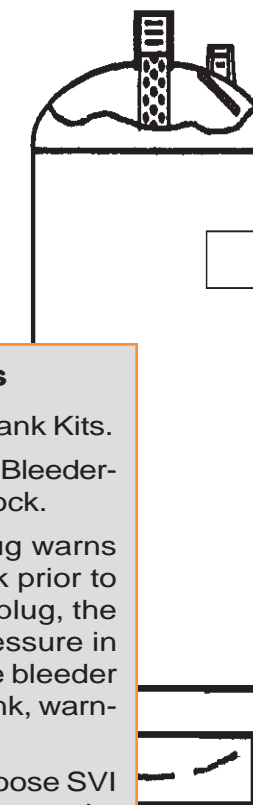
**\$x.xx each** until December 31, 1998. Minimum quantity 20 pieces and sold only in increments of 20. If you **relocate lifts**, now is the time to save on Anchors.

## Lift Tanks: This is Serious Business

SVI now supplies as standard "C" Series Lift Tank Kits. Each Kit comes complete with the Tank, Safety Bleeder-Style Fill Plug with Gauge and Low Oil Float Lock.

**Safety First:** the Safety Bleeder-Style Fill Plug warns service personnel of any pressure in the tank prior to removing fill plug. In order to remove the fill plug, the bleeder must first be removed. If there is pressure in the tank, the moment you start unscrewing the bleeder you would hear the **"hiss"** of air leaving the tank, warning of a possible unsafe situation.

Safety Conscious Lift Repair Professionals choose SVI tanks for added protection. **Beware of low cost tanks lacking in proper safety precautions.**



## SAFETY IS ALWAYS A CONCERN

### Reduced Diameter Safety Legs are real problem solvers.

A lift with a guide tube problem, due to excessive corrosion, may not allow for proper operation of a standard 2-3/8" diameter safety leg.

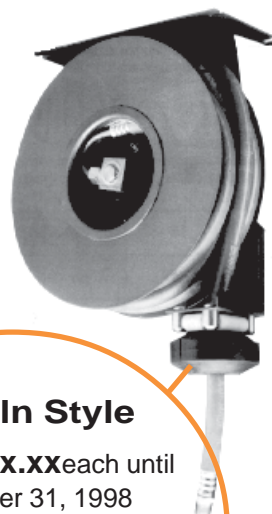
SVI helps you solve this problem and keep lifts safe while satisfying OSHA requirements. 2" Reduced Diameter Safety Legs are generally the answer.

To provide equal strength, each Reduced Diameter Safety Leg is made using extra heavy wall steel tubing.

"RD" Models Available:

BH-RD-66	66" stroke
BH-RD-67	67" stroke
BH-RD-68	68" stroke
BH-RD-69	69" stroke
BH-RD-70	70" stroke

**Call SVI for help with all your Safety Leg needs.**



### Lincoln Style

Ball Stops **\$x.xx** each until December 31, 1998

**BP-1525L** for 3/8" ID Hose

**BP-1526L** for 1/2" ID Hose

**BP-1527L** for 1/4" ID Hose