

Make a solid approach. . .



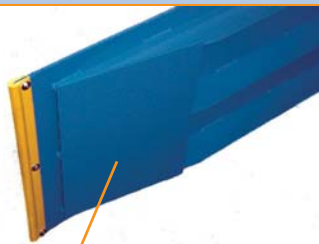
Hardly a day goes by when we are not involved helping solve an issue someone's customer is having. The owner of a fairly new 4 post lift needed an approach ramp that would hold up longer to the rigors of everyday use.

SVI gladly set out to create an improved approach ramp that would not tear apart as easily or dig into the floor a little more each time a vehicle went over the approach ramp. Can you imagine how a BMW dealer with a newly installed Klinker tile floor would possibly react to scores in the tile from an approach ramp?

The SVI solutions were really rather easy. First, we added an additional plate for stiffening purposes on the top of the ramp to help prevent the steel from tearing at the plate's pivot point. Second, a solid steel plate was added to the bottom of the stiffener gussets. This distributes the vehicle's weight over a larger flat surface rather than on three relatively thin contact points. The end result is a stronger, more solid approach ramp and the end to growing scores in your customer's floor.

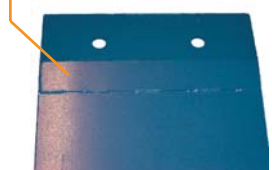
The SVI designed BH-7542-64 improved approach ramp is a DIRECT FIT™ brand product intended to replace Rotary# S120072.

Should directly fit on the following models: AR123, AR40, AR55, ARO123, QL4P, SM123, SM40, SMO123, and some others.



Solid plate evenly distributes the vehicle's weight across a larger flat surface to prevent floor scores.

Stiffener plate added to approach ramp pivot point area handles shear forces better to reduce tearing.



This Rotary lift model SMO123 was installed less than 5 years ago.



Torn up! This approach ramp is literally tearing apart at the pivot point area just from driving vehicles on and off the lift.



Scored floor! The act of driving vehicles on and off the lift has caused these scores in the floor because all the weight is focused on three narrow gussets.



Chasing the tear! A weld was added on the opposite side to try and stop the approach from tearing completely in half. It should hold for while.



SVI International, Inc.
P.O. Box 1750
Aurora, IL 60507



- Baltimore
- Chicago
- Los Angeles

The Twin Post



Newsletter by SVI and Moving Fast Solutions

Update for the S V I Line of Automotive Service Equipment Repair Parts - August 2006

YOU CAN JUST NAME IT!



And, we don't just mean the parts you need. While SVI's selection of on hand inventory is vast so to is SVI's available options to lift installers and equipment dealers.

If you sold it or service it your name should be on it. It is important that your customers remember who to call long after the initial installation or last service call. Now there is an easy way to permanently attach your nameplate to every lift or other piece of shop equipment you sell or service.

Stop putting on stickers that can be easily removed and instead permanently attach a nice looking metal nameplate. Everything you need to start doing this immediately is available from SVI. We will supply you with the tool, the metal tacks and three different sizes of custom screen printed nameplates that you can choose from.

Installation is simple and takes just seconds. The tack tool driver operates off compressed air that you have access to in the shop. All you do is place the metal tack on the magnetic head of the driver, line up your nameplate, line up the tack with one of the holes and pull the trigger. You just delivered a single controlled impact, which drives the specially designed metal tack right into the steel. Wham, wham, in an instant your nameplate is secured. No drilling is required.



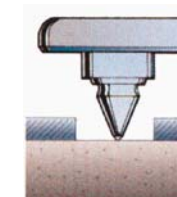
metal tack

Metal tacks are manufactured from special steel alloys and stainless steel and then precisely heat treated and tempered so they are much tougher than the base material into which they are being driven. The special process creates fasteners that can penetrate metal as hard as Brinnell 240 and set themselves in metal as thin as 1/8" (even thinner if the metal is supported). They will fasten to steel, many grades of cast-iron, stainless steel, brass, bronze and aluminum.

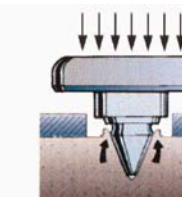
Metal tacks are great for fastening nameplates, data plates, wiring clips or any other light weight attachment. The portable, safe, single-impact air driver allows the operator to position the

attachment before fastening. This eliminates the problem of having to precisely locate and drill holes in the base material. This means no drill bits or messy cleanup.

Metal tacks form their own hole, which eliminates the drilling. Adhesive backed metal nameplates require a clean surface and can be easily removed. Metal tacks need no surface cleanup and are not affected by dirt, grease or oil.



Position
The metal tack is placed in the hole of the nameplate and against the base material, ready for driving.



Drive
Driving the metal tack forces the base metal to form a crater-shaped ring.



Set
When fully driven, the displaced metal is permanently embedded in the locking groove.

- Air Driver • Metal Tacks • Carrying Case • Metal Nameplates •

This product is courtesy of an employee owned company.

Keep your name right next to your customers!

The Twin Post

SVI Supports Distributors

Auto, Truck and Bus Lift Repair Parts to Keep Every Shop Going!



www.sviinternational.com

phone
800-321-8173
or
630-844-5566

fax
800-899-1784
or
630-844-6770

101 W. Illinois Ave.
Aurora, IL 60506

an American owned enterprise



All names, numbers, symbols and descriptions are used for reference purposes only. It is not implied that any part listed is the product of these manufacturers; however, some parts may be the actual product of these manufacturers.

Entire Contents Copyright © SVI International, Inc. 2006

The TitenHD® is the right anchor for Klinker tile.



If you are installing surface-mount lifts on a shop floor covered with attractive Klinker tile use only TitenHD screw anchors. You will be using a higher strength anchor product while providing your customer with cleaner, neater looking installation.



The extra added and important benefit is that TitenHD anchors are removeable. If a lift column ever needs to come down for carriage work or any other reason, the anchor can easily be

removed and reused in the same hole. This means you won't need to reposition the lift and redrill holes or risk damage to the tile floor that can occur when pounding wedge style anchors down.

Klinker tile floors can be found in BMW shops.

- Faster
- Neater
- Stronger
- Faster
- Neater
- Stronger
- Faster
- Neater
- Stronger
- Faster
- Neater
- Stronger



SVI List of everyday services we provide distributors.

Innovation. SVI develops products from scratch to address real needs distributors are asked to solve.

Custom configured safety legs/non-rotators. Helps you get what your customers ask for and right away.

Lower cost shipping. By maximizing the use of our three warehouses we can help you reduce freight costs.

Meet or beat anyone's advertised price or special. This assures you are always striving to optimize your profits.

A growing product line. Everyday products are added to increase your sales opportunities.

General satisfaction. From freight quotes, delivery options, lead times or have any special application questions, SVI supports you!

Custom saddles and adapters. When change occurs to a bus or truck chassis SVI and you will solve the challenges confronted by lift owners.

Same Day Shipping in most cases.

Custom equalizer and lifting cables, fast. Your customers can't afford to be without their lift and you want to be their quick responder.

Engineering. Truly knowing parts are designed to the proper intentions protects everyone.

Support. When you need help identifying a part or problem solving, SVI goes right to work for you.

Safety. When others obsolete safety related devices we re-continue them forever to protect everyone.

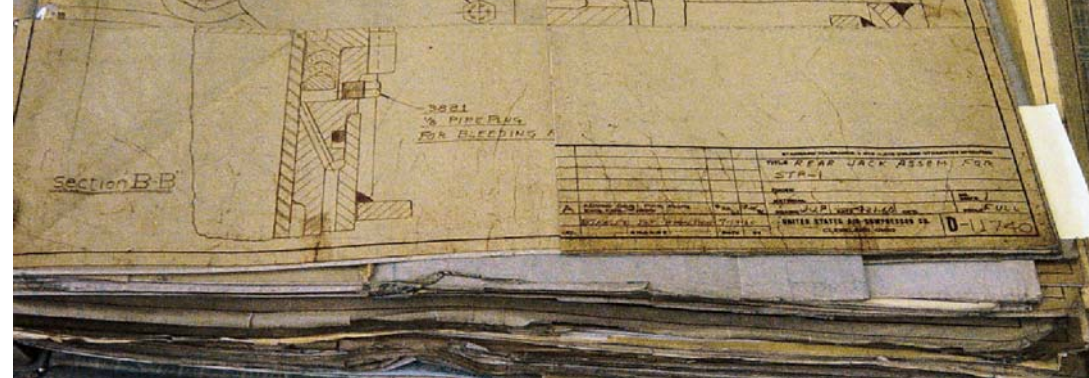
Integrity. We want to be the kind of company you trust and rely on daily.

Value. This is not something measured just in dollars but rather actually the sum total of the results.

Same day shipping on thousands of parts. There is no need to wait, get what you need on the way the day you order it to minimize downtime.

Stewardship. We are concerned about our industry and how changes may affect you and your customers.

We want to keep pace with you, what else can our company do to work better for you?



Something from our LIFT HISTORY room:

The pile of drawings above are the originals created in 1960 by the United States Air Compressor Co. of Cleveland, Ohio to make model number MP-27. This fore and aft lift was sold by Curtis for quite a few years. It was also marketed by Globe lift from 1965 to 1972 under the same model number. During review of the drawings one notices many similarities to a Weaver model EC102. While not entirely the same as the Weaver, the Curtis lift is a very close copy.

SVI maintains parts availability for this lift model and many lift models even older. In our archives, we have drawings and information that goes back to the 1930's. We even have some drawings on one of the first ever 4-Post lifts that was available starting in the 1940's and it was called the Electric Hoist. Do you know who first made this 4-Post lift available?



Serious Specifications

Cable assemblies are one of the key ingredients to lift safety. That is why SVI requires only sound assembly methods be used. Our suppliers are the most professional and most trusted in the wire rope assembly industry.

With the weight of a vehicle over someone's head you cannot afford to use a cable that has an end on it that does not develop the proper pull-out value. SVI cables are made to the proper pull test values. Remember that even equalizer cables can become full load cables in the event of a cylinder failure. Do not compromise safety, SVI is your answer.



Lube Buckets

<insert fancy headline here>



The SVI product line has been growing, thanks to our new product development team. Among other things, currently they are focusing on repair products and consumables for tire changers.

The angled lube buckets pictured above fit Coats models 4040, 4040SA and 4050. The SVI part number is BW-1665-72. We have very affordable pricing and quick delivery. If you do not currently sell parts or consumables for tire changers, now you can. Let your customers know you can help them and increase your sales opportunities.

The tire swabs are also available, just ask for SVI# BW-2104-91.

Global Solutions!

No, we do not have the answers to global warming, global conspiracies or the global energy crisis. We do have the answers to your repair part needs for Globe lifts.

Pictured below is a widely sought after part for Globe lifts. This adapter is for the front saddle of MP-810 and MP-28 models. It is



Candy Dish or Salad Bowl?

rumored the old Globe guys called this thing a salad bowl adapter. Many of the SVI distributors refer to it as the candy dish adapter. One thing is for sure, no one ever ate anything out of it.

It is primarily used for GM vehicles with coil spring front ends. The SVI part number for this adapter is BH-9431-34 and it replaces old Globe # C43114.

This and most other parts for **Globe** lifts will remain continuously available from SVI.

Globe Solutions!

Fits Globe 10-5/8" rear lift section.



Made to order. . .

This custom saddle and adapter package for a Globe lift provides 25,000 lbs. in lifting capacity. It is designed to lift on the frame rails that run down the center of the bus. As bus chassis designs change so does the need for a better way to safely lift the vehicles. The next time you encounter a special lifting need put SVI engineers to work for you. **SVI is your answer!**

The black and blue page.



Air line connectors

SVI has these and many other air line connectors available. We also stock air line tubing.

BH-7214-77 is the "L" style and

BH-7214-78 is the "Y" style

Both push in and lock styles have 1/4" NPT male threads and are available at a cost-savings. If you need any air line connection supplies contact your favorite SVI representative today.

Cobra or cable glide?

Many distributors refer to this as a Cobra head. Rest assured, this isn't a snake but



BH-7528-94

it is a repair part for Rotary lifts.

SVI has tooled up on this and many, many other parts to offer you rapid fire delivery, the right part for the job and industry competitive pricing.

Right Parts • Real Fast

We want to pump them up. . .

Rolling jack bridges use many different pump configurations and pressure settings. We can help you get the repair parts or the new pump you need. The pump on the left is economically priced and delivers a full 10,000 psi, while the pump on the right is commonly found on Rotary rolling jack and operates at 6,000 psi. For service, value and selection, one phone call does it all.

SF-22903



BH-7514-21

20,000+ repair parts. The SVI team is always working for you.

Making it easy

At SVI our job is all about making it easy and affordable for you to help your customers with repair part solutions.

Pre-bagged kits are just one example. These arm pads for Challenger lifts are packaged in sets of four and include installation hardware.

To make rubber pads, SVI uses a highly abrasion or cut resistant compound. We avoid materials such as urethane because of its tendency to cut or tear easily.

Please choose SVI when you need the right kits and the correct material selections.

Ask for BH-7225-01-4.



There is a little yellow seal too. . .

There are so many different makes and models out there today. Perhaps that is why it is increasingly difficult to know what to carry on service trucks. Here's one good example of something to keep available. We have combined two similar popular seal kits for Rotary surface lifts.

The BH-7511-10U will repack Texas Hydraulic or Massey Ferguson cylinders if the OE cylinder numbers are FJ783 thru FJ7664.



Works of art?

Our machine shop enjoys spinning these things into shape on the lathe. Made of aircraft grade, high strength aluminum, these extensions are built to last.

They fit the big boy lifts made by Rotary. If you know anyone that owns an SPO-12, 15 or 18 model you can equip them with top quality SVI extensions.



BH-7536-53 (5")
BH-7536-54 (10")

A DAILY EVENT!

It's true, every single day a part is added to the SVI product line. The replacement rubber pads



BH-7805-168

for Wheeltronic lifts are just another example. Since our last printing of our height extension catalog, we have added twelve (12) new rubber arm pads for various lift makes. From Alamo to Western, we have the pads.

More Parts • Everyday