

SVI SUPPORTS DISTRIBUTORS



SVI supplies its product line only to Lift Repair Professionals and **DOES NOT** sell to lift owners, end-users of lift repair products.

Unfortunately, there are other companies in this Industry that sell directly to lift owners, cutting out the Distributor. SVI believes this undermines Distributors, the back bone of our industry.

This is wrong!

For Distributor Support - SVI is your Answer!



**SVI International, Inc.
LIFT REPAIR PARTS**

ATLANTA - BALTIMORE - CHICAGO - LOS ANGELES

Main Office: 800 Hicks Drive • Elburn, Illinois 60119 • 800-321-8173 • Fax 800-899-1784

**THE LIFT PRO
"Easy Slide
Measuring Guide"**

Address Service Requested

SVI International, Inc.
P.O. Box 70
Elburn, IL 60119

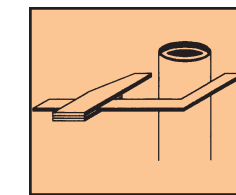


BULK RATE
US Postage
PAID
Permit No. 134
Carol Stream, IL



The Twin Post

10th Year of:
Update for the S V I Line of
Automotive Service Equipment Repair Parts - June 1999

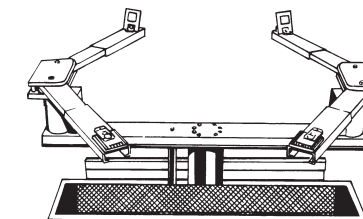


What is Obsolete?

Obsolete is a Word SVI Hardly Understands!

Rarely a day goes by that we aren't helping distributors solve special needs for their customers. In the lift repair business there are popular and not so popular repair parts. SVI specializes in both.

While maintaining an inventory on over 4,000 popular part numbers and offering well over 8,000 lift repair parts, SVI will drop everything to help with a special request. Just recently, a customer asked if we could supply a replacement wide frame superstructure for an old Weaver model EC-650. Our answer was simply - yes!



To do this we needed the distributor's help. A sample was sent to us for dimensioning and quoting purposes.

Within a day or two pricing and a delivery date was established. In essence the complete turn around time for this job was just over a week. Just think, this part has been out of production for ten years and in just a matter of days it became available again, forever.

Resupplying once obsoleted parts is just another service provided so SVI distributors can provide customers with solutions. Whether it is an above or in-ground lift, chances are by working together we can get the job done for your customer. Call us today for more details on how we can help you with all your lift parts needs.

4 "Ready Ship" Warehouses

- Atlanta
- Baltimore
- Chicago
- Los Angeles

Make Use of Your Regional SVI Warehouse to Speed Delivery Times and Lower Freight Costs.

New Lift Tool Available

See inside for the
*Easy Slide
Measuring Guide*

SVI YEAR 2000 CALENDER

Get Involved, Get Featured!

SVI is preparing a special Lift Industry Year 2000 Calender. We want to feature your pictures of the most impressive lift installations throughout North America. We are looking for a photo of the lifts (any make or model) you installed in a new dealership, transit facility, muffler shop, power company, municipality, etc. The calender size is a large 24" X 16" and in full color.

Twelve winners will be chosen. If you are interested send in your photos (they will be returned if requested) or call Doug for more details. Include with your photos the make and model and year installed. If you wish, a caption will be printed under the photo giving your company full recognition that over 2500 lift companies throughout the US and Canada will see and admire. Get Involved and Get Featured! **The Deadline for entries is July 30, 1999.**

Send Photos To:

SVI International, Inc.
c/o Year 2000 Calender
P.O. Box 70
Elburn, IL 60119

(Your full color photo here)

January 2000

	S	M	T	W	T	F	S
Dec 99							1
	2	3	4	5	6	7	8
	9	10	11	12	13	14	15
Feb 00	16	17	18	19	20	21	22
	23	24	25	26	27	28	29
	30	31					

To Order: 800-321-8173 or 630-365-9250 Fax: 800-899-1784 or 630-365-2809

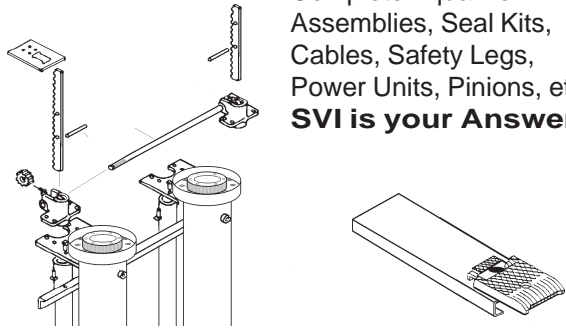
All names, numbers symbols and descriptions are used for reference purposes only. It is not implied that any part listed is the product of these manufacturers, however; some parts may be the actual product of these manufacturers.



Repair Parts for Globe Lifts, Call SVI for Help!

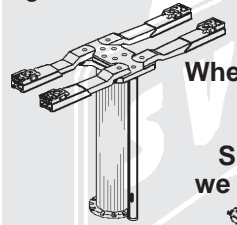
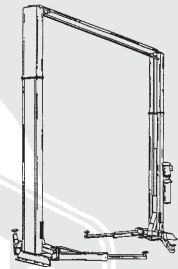
SVI has a full range of Repair Parts for Globe Lifts in stock and ready for immediate shipment.

For Sleeve & Adapters, Complete Equalizer Assemblies, Seal Kits, Cables, Safety Legs, Power Units, Pinions, etc. **SVI is your Answer!**

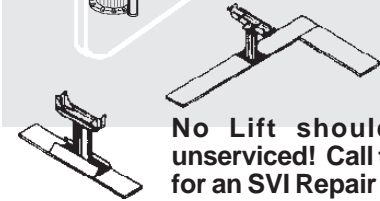


LIFT REPAIR PARTS

SVI Specializes in:
LIFT REPAIR PARTS for most all makes and models of lifts. Parts are even available for lifts whose mfg'r has long since gone out of business.



Whether Your Lift is In-Ground or Surface Mount we have the parts!



No Lift should go unserved! Call today for an SVI Repair Parts Distributor. **800-321-8173**

SVI "Ready Ship" warehouses in: Atlanta-Baltimore-Chicago-Los Angeles

Parts for:
ALM
Ammco
Benwil
Challenger
Cochin
Forward
Gilbarco
Globe
Nussbaum
Rotary
Weaver
Western
and more . . .

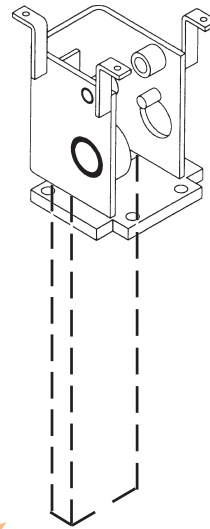
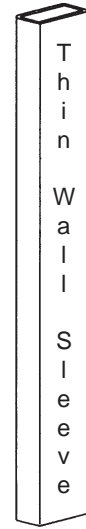


Resleeve the Rack Bar Guide Tubes on Gilbarco/Manitowoc Lifts.

A Distributor just west of Chicago was called out on a job to repair a Gilbarco side by side. What he found was the existing guide tubes had corroded and sand was seeping in causing the lift to hang up.

Bill asked that we produce a special thin wall tube to resleeve the existing guide tubes. We were eager to try this out. Our new BH-9310-SLV was a success and the customer's lift was saved. Thanks Bill for helping provide yet another service solution for all SVI Distributors.

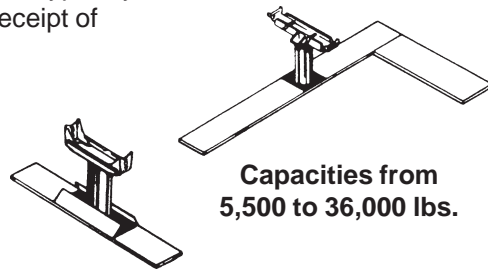
Don't Condemn Em - Sleeve Em! →



Fore & Aft Lifts Replacement Cylinder Sections & Kits, an SVI Speciality!

Choose from size ranges of 7-1/2" to 12-5/8" including a 10-5/8" dual rear section. Prices are competitive and deliveries are fast, typically 2-3 days from receipt of your order.

Call today for more information and to request our Sections & Kit Catalog



Capacities from 5,500 to 36,000 lbs.

Want Referrals?

SVI is advertising in several trade publications to help compliment the field sales and service efforts of SVI Distributors.

Any sales leads generated by our ads will be passed on to interested, active distributors. We will fully support those of you that support SVI's efforts. This is evidenced

through your making use of our comprehensive line of lift repair products.

Of course, if you only service in-ground lifts, we will be careful not to send a repair lead on an above ground lift and vice versa.

Let's help each other grow. If you want to be sure you are included on our sales lead referral list, call Drew Simpson with your service capability details.

SAFETY LEG SOLUTION

Corroded Guide Tubes Causing Problems?

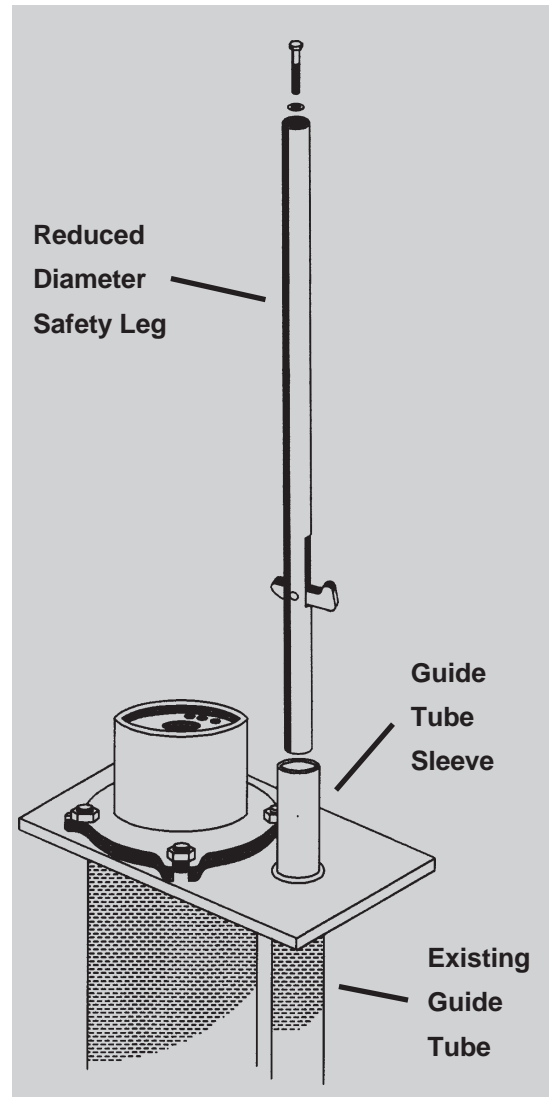
If any of your customers are experiencing Safety Leg problems due to corroding Guide Tubes SVI has the Answer. Once the Guide Tube corrodes, backfill and sediment seep into the tube causing a restriction when lowering lift. SVI now provides a simple guide tube replacement sleeve and reduced diameter safety legs.

Correcting this problem is easy: (1) use an SVI guide tube auger to clean out existing guide tube, (2) check existing guide tube for correct depth, (3) cut new guide tube accordingly, (4) insert new guide tube sleeve, and (5) install reduced diameter safety leg.

Reduced Diameter Safety Legs are produced using a much heavier wall tube. Standard safety legs use schedule 40 pipe with a .154 wall thickness while a reduced diameter leg uses DOM tubing with a .250 wall thickness.

For use on most 10-5/8" 8,000 lb. single post and 7-1/2" and 8-1/2" fore and aft lifts currently using 2-3/8" diameter schedule 40 safety legs.

Contact your favorite SVI representative to order or for complete details.



New

Tool a Big Hit with Lift Repair Technicians!

Take the guess work out of piston size identification! SVI has developed a new Low Cost Tool to make measuring tasks easier in the field. The "Easy Slide Measuring Guide" will measure most industry standard outside diameters and widths up to 12-5/8" nominally. Easier to read than a ruler. Butt the "slide guide" up to the item being measured and simply read the size shown directly to the right of the arrow.

At only **\$24.95** each, no Lift Service Pro should be without one. It is constructed from durable, grease and oil resistant UHMW material. It is easy to read and includes a special hole for hanging.

Ideal uses: Pistons, Safety Legs, Rack Bars, Cables, Acme Threads, Rubber Arm Pads, etc.



Order Today! \$24.95 each