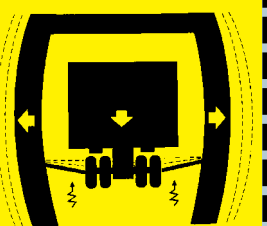


## Swing arm capacity decals

**MAXIMUM**  
**2,250 lbs.**  
**Per Arm**  
**Do Not Overload**



Be aware of extra payload weight and/or add-on components to vehicle that may result in an overload condition.

BH-7077-50-09A copyright © SVI International, Inc. 2004

These 2-1/2" x 4-1/2" vinyl labels are great for placing on the swing arms of surface mount lifts. They help to remind lift users of the actual rated arm capacity. Shown above in actual size, there is also a friendly reminder about excessive payload weight. Ideal for adding on lifts during periodic inspection and sold in convenient sets of four based on lift capacity. Order today.

SVI P/N	Lift Cap.
BH-7077-50-07 set of four 1,750 lb. labels	7,000 lbs.
BH-7077-50-09 set of four 2,250 lb. labels	9,000 lbs.
BH-7077-50-10 set of four 2,500 lb. labels	10,000 lbs.
BH-7077-50-12 set of four 3,000 lb. labels	12,000 lbs.

**Help stop arm overloads!**

## Don't let someone break this car!



C5 and C6 Corvette Lift Pads keep this from happening.

Without these, each time the car owner or a mechanic puts a C5 or C6 vehicle on a lift **it will be damaged.**



More C5 and C6

Corvettes are damaged by automotive lifts than in traffic accidents. SVI distributors can help protect the damage from occurring.

Sold only as a set of 4

SVI Part Number BH-7077-04C5

United States Patent No. 6,604,730

## Tip for Rotary model SPO12 owners

When encountering certain smaller cars with SPO12 lifts mechanics are having a problem with the thickness or height of the arm and the low position of the adapter.



When the pick up point is above the rocker panel, the arm actually interferes with the rocker panel before the adapter contacts the lifting point. This can cause expensive damage to the rocker panel and is exactly the reason for height extensions. But, some extensions are still just too tall for this example. The frame is already low and the rocker panel hangs down just slightly below the frame. If you used an extension you would never get the adapter under the car.

The way around this problem is simple, instead of using the standard adapter that came with the lift, purchase a BH-7475-01R adapter pad and base assembly from SVI. This adapter and pad provides just enough additional height that you can easily use the lift for small and large vehicles. Our adapter also works with original extensions.

The mechanics at our local Chevy dealer love this solution.

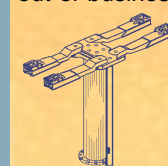
## over 18,000 LIFT REPAIR PARTS

for  
• Auto  
• Bus  
• Truck

Lifting Applications

### SVI Specializes in:

LIFT REPAIR PARTS for most all makes and models of lifts. Parts are even available for lifts whose original mfg'r has long since gone out of business.



In-Ground or Surface Mount: We have the parts.

No lift should go unserviced. Call today for a local SVI Distributor. 800-321-8173



Power Unit Parts, Cables & Pulleys, Seals, Rubber Arm Pads, etc.



SVI "Direct Fit" BRAND  
Baltimore • Chicago • Los Angeles

## We advertise for you.



SVI P/N	Description
BH-1799-OPM	10-5/8" Outperformer Multiseal
BH-1799C	10-5/8" Replacement Outperformer Lower Seal
BH-1701	10-5/8" Replacement Outperformer Upper Seal/Wiper Combo

## 10-5/8" Outperformer Multiseal kits for Rotary

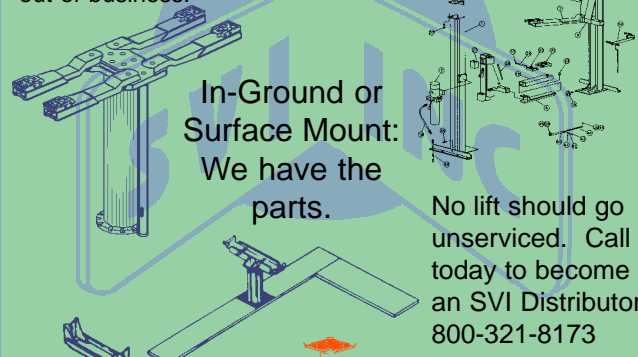
We have always said multiple lip seal configurations outperform single lip seal designs. SVI now has available new variable pressure Outperformer Multiseal kits for Rotary lifts. These new kits are a dual seal design and will provide more time between seal changes for your customers. If the lower seal should begin to weep oil, the upper seal/wiper takes over. Variable pressure Outperformer Multiseals will work on Rotary lifts running at pressures of 150 to 350 psi or more.

**What a simple design.** All that we had to do to make this special new kit available is cut the wiper portion off of our ultra reliable BH-1799 seal, make a new steel gland ring and add the old Autoquip style seal as the top seal/wiper combo. We also minimized the trap pocket around the wiper so debris will more naturally shed away. What a great idea!

Whether your customers are lifting passenger cars, city transit buses or snowplows the Outperformer Multiseal is for them. Call for price and delivery, order today.

## over 12,000 LIFT REPAIR PARTS

SVI Specializes in: LIFT REPAIR PARTS for most all makes and models of lifts. Parts are even available for lifts whose original mfg'r has long since gone out of business.



In-Ground or Surface Mount: We have the parts.

No lift should go unserviced. Call today to become an SVI Distributor. 800-321-8173



Parts for: ALM, Ammco, Benwil, Bend-Pak, Challenger, Forward, Gilbarco, Globe, Nussbaum, Rotary, Weaver, Western and more...

A must have for every 2-post surface mount lift.



SVI "Direct Fit" BRAND  
Baltimore • Chicago • Los Angeles

## AUTO LIFT REPAIR PARTS

Over 20,000 parts available



Most all makes and models.

ALL lifts can be repaired.

One phone call does it all.

800-321-8173

Baltimore  
Chicago  
Los Angeles

in-ground



# The Twin Post

Update for the S V I Line of Automotive Service Equipment Repair Parts - April 2004



Newsletter by SVI and Bolt-on Compliance Publishing

- Baltimore
- Chicago
- Los Angeles

### Multi-position safety leg

12-5/8" front moveable cylinder assemblies for Rotary

### Swing arm capacity decals

### Corvette lift pads

### 10-5/8" outperformer multiseal

### SVI fiberglass coating

### Tire changers and accessories

### Replacement turnplate decal

### Our special appreciation

### Candy store of lift repair

### Steel storage tanks

### Recent news

### F-R-L Combo

### Tip for SPO12 owners

### We advertise for you

## Bolt-on compliance

New patent pending multi-position safety leg / non-rotator satisfies the needs of O.S.H.A. inspectors and industry requirements.

Concerned lift owners and operators have always wanted more locking positions. O.S.H.A. inspectors keep pushing for more safety related compliance. SVI reacts yet again with a fantastic new product that satisfies everyone.

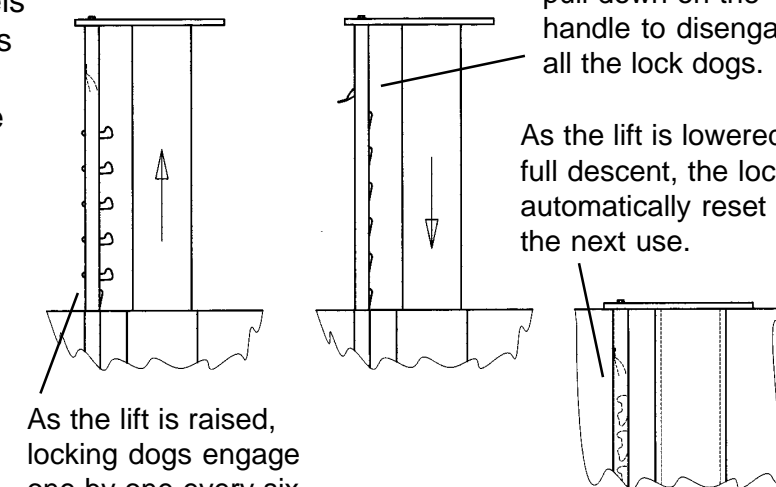
The new "MPTR" series of safety legs from SVI can be installed in minutes on virtually all single post lifts that currently use a round style safety leg / non-rotator.

MPTR's offer multiple locking positions in 6" increments throughout the lift's stroke, convenience of single point top release and automatic reset for reuse each time the lift is fully lowered.

In the past, when lift owners have been required or just simply wanted to upgrade their lifts with multiple position locking mechanisms, the solution was expensive. MPTR's take the cost and the time out of multi-lock upgrades and will quickly satisfy an O.S.H.A. inspectors requirements.

- Easy to install
- No air required
- Bolt-on compliance
- Fits single post models
- Multiple lock positions
- Single point release
- Can easily re-engage locks if you want to lower a few feet and keep working
- Only from SVI
- Cost-saving upgrade
- Increases safety
- Patent pending

### How it works



As the lift is raised, locking dogs engage one by one every six inches on the way up.

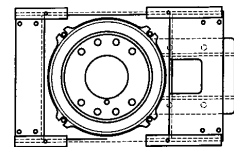
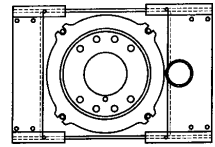
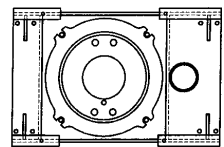
When it is time to lower the lift, simply pull down on the handle to disengage all the lock dogs.

As the lift is lowered to full descent, the locks automatically reset for the next use.

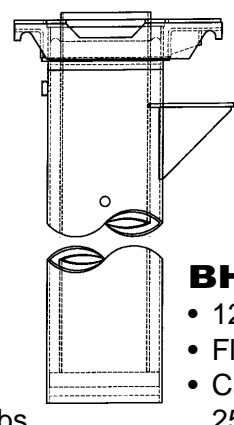
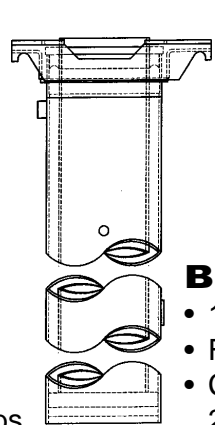
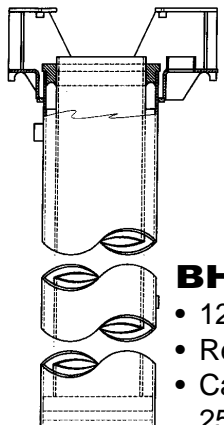
SVI is your answer.

# 12-5/8" replacement cylinder assemblies for Rotary

For many years now SVI has been supplying replacement 12-5/8" cylinder assemblies for Rotary lifts. These cylinder assemblies are found in facilities engaged in heavy duty vehicle lifting. They have been long since discontinued by the OE so SVI stepped in to help you save your customers tons of money. Why should an entire lift be replaced when just one part is a problem? Call today or tomorrow for more details.



12-5/8" front moveables pictured, 12-5/8" rear sections also available.



### BH-9771-72

- 12-5/8" diameter
- Recessed
- Capacity: 25,000 to 35,000 lbs.
- 64-1/2" Stroke

### BH-9771-74

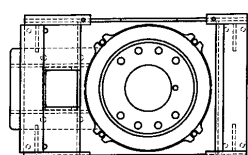
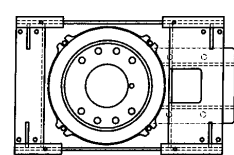
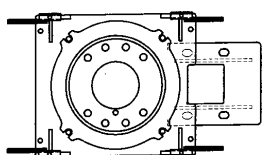
- 12-5/8" diameter
- Flush mount
- Capacity: 25,000 to 35,000 lbs.
- 64-1/2" Stroke

### BH-9771-72

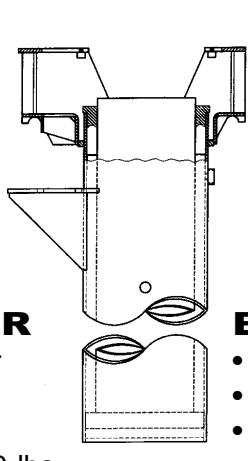
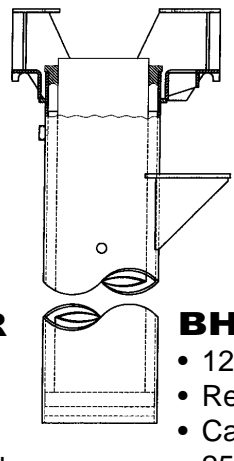
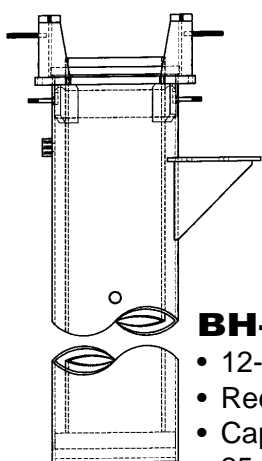
- 12-5/8" diameter
- Flush mount
- Capacity: 25,000 to 35,000 lbs.
- 60" Stroke

- Heavy duty construction
- Built to last
- Totally repairable
- Quick delivery
- Priced right
- **American made**
- Fiberglass coating available
- "Direct Fit" replacement
- Can be used to help you bid your next heavy duty lift job
- Transit specified

**Built to last!** Additional gussets are used to strengthen the overall structure and where applicable heavier steel plates are used to provide a solid product that is truly **built to last**.



12-5/8" front moveables pictured, 12-5/8" rear sections also available.



### BH-9776-22R

- 12-5/8" diameter
- Recessed
- Capacity: 25,000 to 35,000 lbs.
- 60" Stroke

### BH-9776-50R

- 12-5/8" diameter
- Recessed
- Capacity: 25,000 to 35,000 lbs.
- 57" Stroke

### BH-9776-52R

- 12-5/8" diameter
- Recessed
- Capacity: 25,000 to 35,000 lbs.
- 67" Stroke

- Multiple lip seal technology
- 16 to 32 RMS plunger finish
- Chrome plated plunger option
- Free shipping
- 100% quality controlled
- **Cylinders for:**
- Joyce
- Weaver
- Ford Smith
- Western also available.

## SVI's fiberglass coating, it won't shock you to know.

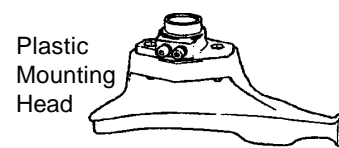
Testing products to determine performance levels that can be expected is an important part of the process. This past January we hired **Eltek International Laboratories** to conduct a **3rd party test** on our fiberglass coating per the **ASTM D149** test method. The purpose of the test was to discover how many volts it would take to penetrate through our coating. The results were remarkable.



It takes about 20,000 volts before there is any kind of dielectric breakdown. Our fiberglass coating not only meets but exceeds by 7,500 volts the industry standard requirement of no less than 12,500 volts. We have often wondered what you would have to do in a shop to expose a lift to 12,500 volts, have you?

For premium corrosion protection on in-ground lift components, **SVI is your answer.**

## Get the works, Tire Changers and Accessories real soon!



Semiautomatic tire changer to demount and mount the wheels of cars, motorcycles and light industrial vehicles. It can deal with rim diameters of up to 22" and tires up to 330 mm thick. Practical and strong, S 408 offers optimum performances at an extremely competitive price.

It is also available in the **SV 408GP** version with quick inflating device for tubeless tires, pedal control and bead fitting by water jets from the table top slides.

### BEAD LOOSENING

A powerful bead loosening cylinder and a shoe with an ergonomic shape allow the tire beads to be quickly and accurately loosened. A specially shaped rubber support allows rims to be handled with the utmost safety and without the risk of damage.

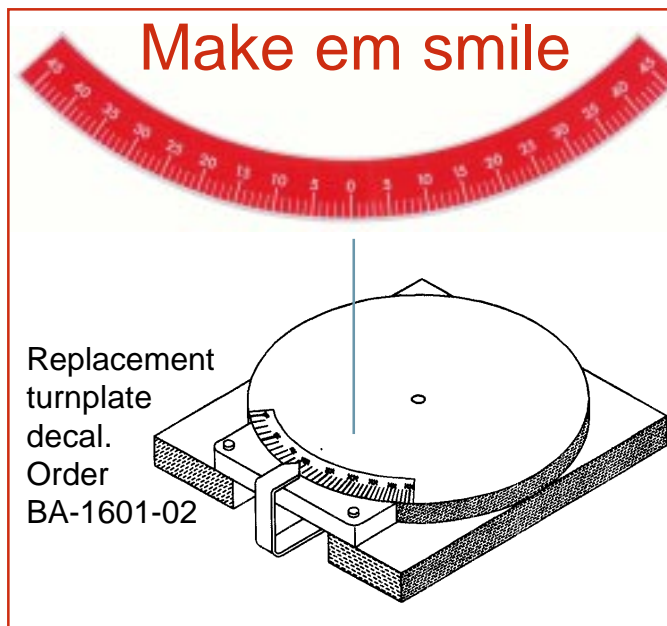
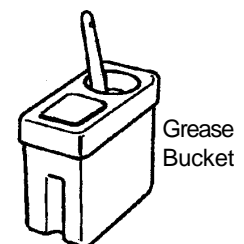


### CLAMPING

Table top that turns in both directions. It can clamp rims measuring 10" to 22" in diameter with 12" to 22" internal clamping action and **10" to 20" external clamping**. On request, it can be fitted with special wheel clamp and slide guards so that more delicate rims can also be handled without damage.

### DEMOUNTING AND MOUNTING

The side movement of the swing arm allows the toolhead to be easily positioned and the work top to be quickly freed. Precision-cast toolhead with new shape and special guards so that work is always carried out in an optimum way and in the utmost safety, even on alloy rims.



Replacement turnplate decal. Order BA-1601-02

## Make em smile

## Our special appreciation.

On March 4, 2004 we received a note from a long time customer who had recently sold their business to an oil company. The note was an announcement about the sale but also contained a very special note to us at the bottom. It read as follows:

**"Thank you SVI for your many years of fantastic service and great products! Yours is still the best company we have ever done business with!"**

Well, thank you Barbara Mullins for the very kind words. All of us try very hard to do a great job for those in the industry we serve. It is sure nice hear that our hard work and efforts are appreciated.

## Candy Store of Lift Repair

When it comes to lift repair parts, no store has more.

SVI has consistently increased inventory levels and product selection to provide lift repair professionals with the fastest delivery possible. One measurable objective we constantly monitor is our same day shipping. Another is our orders shipped complete performance. We are pleased to report the following:

- **93.85%** of all orders ship complete
- **43.11%** ship the same day complete
- **31.75%** ship the next day complete

We couldn't do it without you, thanks for your support and choosing SVI to meet your lift repair parts needs. **Thanks for making SVI your answer!**



Thousands of lift repair parts

## Steel Storage Tanks

SVI now provides steel storage tanks for all sorts of applications. Our tanks are manufactured in the Midwest and shipped right to your jobsite. Special sizes are available on request. Sizes range from 180 gallon on up to 5000 gallons. Tanks are supplied in either standard or UL specifications. Watch for a complete catalog and price list in your mailbox soon. We want your tank business, please give us a chance to meet your needs.



Very competitive pricing

- Above Ground Double Wall Skid Tanks
- Fireguard: Horizontal Round Tanks
- Fireguard: Rectangular Tanks
- Pickup or Truck Box Tank
- Rectangular Tanks
- Bench Top Tanks
- Fork Lift Tanks
- Round Tanks
- Dikes

One phone call does it all  
800-321-8173

## Recent News

• **SVI purchases** Challenger Lift's remaining parts inventory of their former low pressure in-ground lift models.

• **Dana Titus** joins the SVI organizations as QMS Director. Dana is responsible for all aspects of SVI's continual improvement Quality Management System.

• **SVI files patent application** for new multi-position automatic safety leg/non-rotator.

• **New system employed by SVI** to aid in faster order processing and even faster delivery.

• **Steel prices surge** as Worldwide demand outpaces steel production. This has resulted in double digit cost increases and price adjustments. Double check current pricing on all steel parts with your favorite SVI DSR before quoting any price sensitive job.

• **Voicless.** Many distributors have called SVI to comment that they feel they do not have a real voice in the lift industry. They disagree with the exclusionary tactics of the Automotive Lift Institute and want a new organization formed that includes ALL manufacturers, installers, service organizations and even end-users. An organization where everyone has a voice and everyone can contribute. If you feel the same way, tell us. Perhaps the ALI has truly outlived its usefulness.



**1/4" Metal F-R-L Combo** from Metal Works. Great quality at a great price! Call for pricing.

SVI P/N BH-7070A-FRL

