

Lift Replacement Sections

REPLACEMENT CYLINDER ASSEMBLY KITS
& SECTIONS FOR FRONT & REAR LIFTS



Lift Replacement Sections

SVI International, Inc.

(800) 321-8173 • fax: (800) 899-1784

155 Harvestore Drive • DeKalb, IL 60115

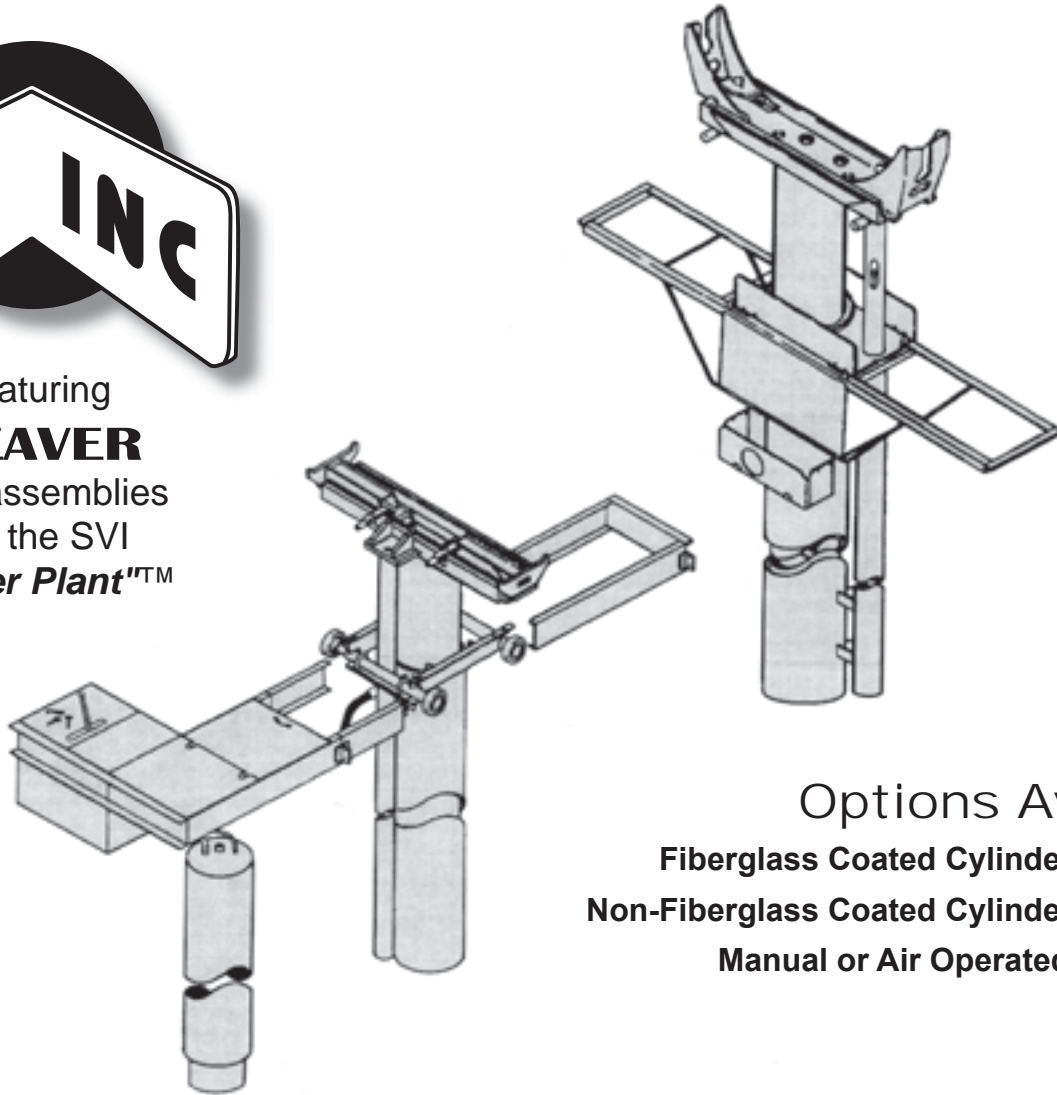
www.sviinternational.com

BALTIMORE • CHICAGO • LOS ANGELES

Lift
Replacement
Sections
LRS0012E



Featuring
WEAVER
style assemblies
and the SVI
"Power Plant"™



Options Available
Fiberglass Coated Cylinder Assemblies
Non-Fiberglass Coated Cylinder Assemblies
Manual or Air Operated Safety Legs

Table of Contents

7-1/2" Front Moveable	2-3
10-5/8" Front Moveable	4
12-5/8" Front Moveable	5
10-5/8" Dual Front Moveable	6
7-1/2" Rear Stationary	7-8
10-5/8" Rear Stationary	9-11
10-5/8" Dual Rear Stationary	12-13
12-5/8" Rear Stationary	14-17
Options & Accessories.....	18-22

BALTIMORE • CHICAGO • LOS ANGELES

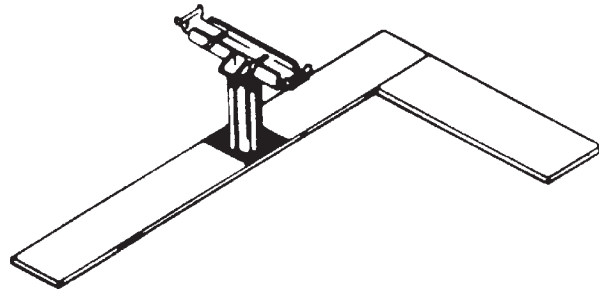
(800) 321-8173 • fax: (800) 899-1784

www.sviinternational.com



Replacement Lift Cylinder Assembly Kits

7-1/2" Front Moveable



Front Replacement Kit Consists of:

Front Cylinder Assembly Complete - Choice of Either Fiberglassed or Non-Fiberglassed - Saddle with Standard Adapters - Axle Roller Package - Choice of Either Manual Release (single-position lock) or Air-Operated (multi-position lock) Safety Leg System - Hydraulic Hose Assembly. (Does not include any framework or cover doors)

Compatible with Front:

Weaver: EC-100, EC-101, EC-102, EC-103, EC-202, EC-203

Note: Replacement units purchased for older Weaver lifts may require some minor modification in the field to existing cover plates in order to attach plates to cylinder assembly.

Specifications

Plunger Diameter: 7-1/2"		Oil Displacement: 14 gallons approx.	
Capacity:	Air-Hydraulic	5500 lbs. @	175 psi - i.e. EC-100, EC-102, EC-202
	Electric-Hydraulic	8000 lbs. @	250 psi - i.e. EC-101, EC-103, EC-203
Rise:	70" measured from finished floor to top of adapter		

SVI Kit #	Description (complete cylinder assy kit w/ choices)
SV-102202FM	Cylinder Assy w/ Manual Top Release Single- Position Safety Leg
SV-102202FMG	Cylinder Assy w/ Manual Top Release Single- Position Safety Leg Fiberglassed Cylinder Assembly
SV-102202FT	Cylinder Assy w/ Air-Operated Multi-Position Safety Leg System*
SV-102202FTG	Cylinder Assy w/ Air-Operated Multi-Position Safety Leg System* Fiberglassed Cylinder Assembly

* Air-Operated Multi-Position Safety Leg System Includes Locking Leg, Air Release Valve and Hardware. Minor Field Modification To Existing Control Valve Cover Plate May Be Necessary. Existing Rear Assembly Must Already Be Equipped with Air Operated System or Upgraded with SV-52R. To Upgrade, Rear Must Have Safety Leg Guide Tube.

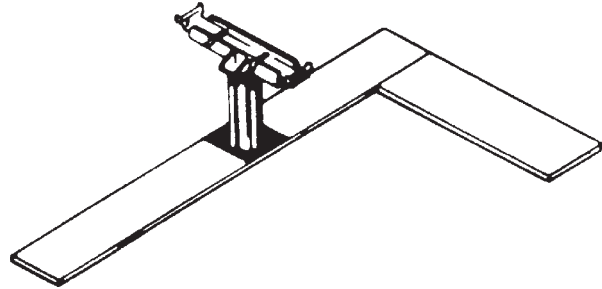
Call SVI For Front Frame, Covers, Valving, Tank, Ratchet Parts and Special Adapters



Replacement Lift Cylinder Assembly Kits

7-1/2" Front Moveable

Front Replacement Kit Consists of:



Front Cylinder Assembly Complete - Choice of Either Fiberglassed or Non-Fiberglassed - Heavy Duty Saddle with Standard Adapters - Axle Roller Package - Choice of Either Manual Release (single-position lock) or Air-Operated (multi-position lock) Safety Leg System - Hydraulic Hose Assembly. (Does not include any framework or cover doors)

Compatible with Front:

Weaver: EC-107, EC-108

Used in conjunction with 10-5/8" Stationary Rear Section.

Note: Replacement units purchased for older Weaver lifts may require some minor modification in the field to existing cover plates in order to attach plates to cylinder assembly.

Specifications

Plunger Diameter: 7-1/2"		Oil Displacement: 14 gallons approx.	
Capacity:	Air-Hydraulic	5500 lbs. @ 175 psi - i.e. EC-107	
	Electric-Hydraulic	8000 lbs. @ 250 psi - i.e. EC-108	
Rise:	70" measured from finished floor to top of adapter		

SVI Kit #	Description (complete cylinder assy kit w/ choices)
SV-107108FM	Cylinder Assy w/ Manual Top Release Single- Position Safety Leg
SV-107108FMG	Cylinder Assy w/ Manual Top Release Single- Position Safety Leg Fiberglassed Cylinder Assembly
SV-107108FT	Cylinder Assy w/ Air-Operated Multi-Position Safety Leg System*
SV-107108FTG	Cylinder Assy w/ Air-Operated Multi-Position Safety Leg System* Fiberglassed Cylinder Assembly

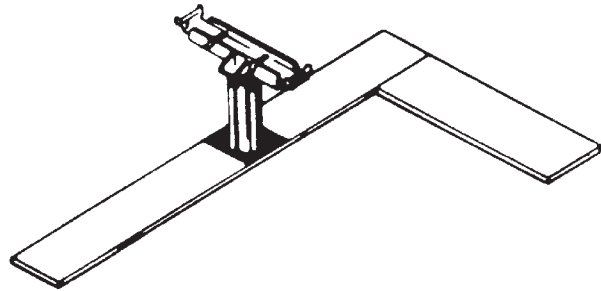
* Air-Operated Multi-Position Safety Leg System Includes Locking Leg, Air Release Valve and Hardware. Minor Field Modification To Existing Control Valve Cover Plate May Be Necessary. Existing Rear Assembly Must Already Be Equipped with Air Operated System or Upgraded with SV-54R. To Upgrade, Rear Must Have Safety Leg Guide Tube.

Call SVI For Front Frame, Covers, Valving, Tank, Ratchet Parts and Special Adapters



Replacement Lift Cylinder Assembly Kits

10-5/8" Front Moveable



Front Replacement Kit Consists of:

Front Cylinder Assembly Complete - Choice of Either Fiberglassed or Non-Fiberglassed - Saddle with Standard Adapters - Axle Roller Package - Choice of Either Manual Release (single-position lock) or Air-Operated (multi-position lock) Safety Leg System - Hydraulic Hose Assembly. (Does not include any framework or cover doors)

Compatible with Front:

Weaver: EC-105, EC-106, MC-301

Rotary: AT70H, AT70E, AT1012E, FM10, FM10ML

Note: Replacement units purchased for Rotary and older Weaver lifts may require some minor modification in the field to existing cover plates in order to attach plates to cylinder assembly.

Specifications

Plunger Diameter: 10-5/8"		Oil Displacement: 25 gallons approx.	
Capacity:	Air-Hydraulic	12,000 lbs. @ 175 psi - i.e.	EC-105, AT70H
	Electric-Hydraulic	18,000 lbs. @ 250 psi - i.e.	EC-106, MC-301, AT70E, 1012E
Rise:	66" measured from finished floor to top of adapter		

SVI Kit #	Description (complete cylinder assy kit w/ choices)
SV-105106FM	Cylinder Assy. w/ Manual Top Release Single-Position Safety Leg
SV-105106FMG	Cylinder Assy. w/ Manual Top Release Single-Position Safety Leg Fiberglassed Cylinder Assembly
SV-105106FT	Cylinder Assy. w/ Air-Operated Multi-Position Safety Leg System*
SV-105106FTG	Cylinder Assy. w/ Air-Operated Multi-Position Safety Leg System* Fiberglassed Cylinder Assembly

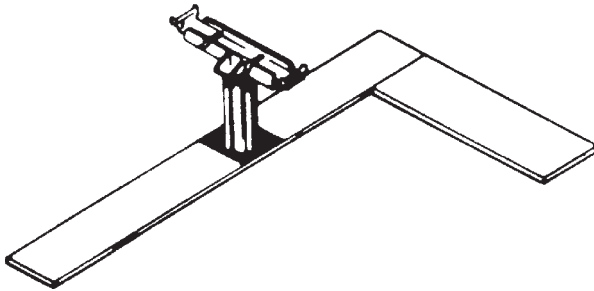
* Air-Operated Multi-Position Safety Leg System Includes Locking Leg, Air Release Valve and Hardware. Minor Field Modification To Existing Control Valve Cover Plate May Be Necessary. Existing Rear Assembly Must Already Be Equipped with Air Operated System or Upgraded with SV-56R. To Upgrade, Rear Must Have Safety Leg Guide Tube.

Call SVI For Front Frame, Covers, Valving, Tank, Ratchet Parts and Special Adapters



Replacement Lift Cylinder Assembly Kits

12-5/8" Front Moveable



Front Replacement Kit Consists of:

Front Cylinder Assembly Complete - Choice of Either Fiberglassed or Non-Fiberglassed - Saddle with Standard Adapters - Axle Roller Package - Air-Operated (multi-position lock) Safety Leg System - Hydraulic Hose Assembly. (Does not include any framework or cover doors.)

Compatible with Front:

Weaver: MC-320

Note: Replacement units purchased for older Weaver lifts may require some minor modification in the field to existing cover plates in order to attach plates to cylinder assembly.

Specifications

Plunger Diameter: 12-5/8"		Oil Displacement: 36 gallons approx.	
Capacity:	Air-Hydraulic	15,000 lbs.	@ 175 psi
	Electric-Hydraulic	25,000 lbs.	@ 250 psi
Rise:	62-1/4" measured from finished floor to top of adapter		

SVI Kit #	Description (complete cylinder assy kit w/ choices)
SV-320T	Cylinder Assy. w/ Air-Operated Multi-Position Safety Leg System*
SV-320TG	Cylinder Assy. w/ Air-Operated Multi-Position Safety Leg System* Fiberglassed Cylinder Assembly

* Air-Operated Multi-Position Safety Leg System Includes Locking Leg, Air Release Valve and Hardware. Minor Field Modification To Existing Control Valve Cover Plate May Be Necessary. Existing Rear Assembly Must Already Be Equipped with Air Operated System.

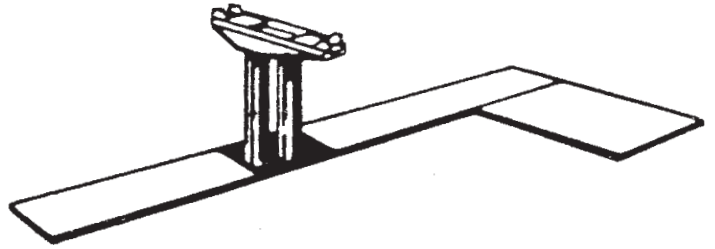
Call SVI For Front Frame, Covers, Valving, Tank, Ratchet Parts and Special Adapters



Replacement Lift Cylinder Assembly Kits

10-5/8" Dual Front Moveable

for use with non-recessed front frames.



Front Replacement Kit Consists of:

Dual Front Cylinder Assembly Complete - Choice of Either Fiberglassed or Non-Fiberglassed
- Dual Saddle with Standard Adapters - Axle Roller Package - Air-Operated (multi-position lock)
Safety Leg System - Hydraulic Hose Assembly. (Does not include any framework or cover doors)

Compatible with Front:

Weaver: MC-306

Rotary: Will fit front pits of Rotary lifts and can be used to double lifting capacity.

Note: Replacement units purchased for Rotary and older Weaver lifts may require some minor modification in the field to existing cover plates in order to attach plates to cylinder assembly.

Specifications

Plunger Diameter: (2) 10-5/8"	Oil Displacement: 50 gallons approx.
Capacity:	Electric-Hydraulic 36,000 lbs. @ 250 psi
Rise:	66" measured from finished floor to top of adapter

SVI Kit #	Description (complete cylinder assy. kit w/ choices)
SV-306T	Cylinder Assy. w/ Air-Operated Multi-Position Safety Leg System*
SV-306TG	Cylinder Assy. w/ Air-Operated Multi-Position Safety Leg System* Fiberglassed Cylinder Assembly

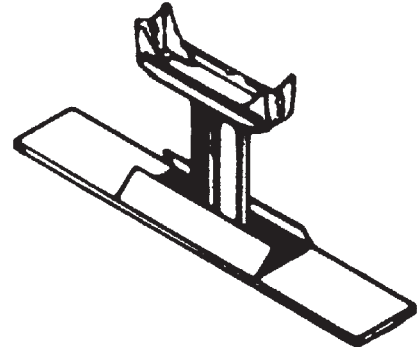
* Air-Operated Multi-Position Safety Leg System Includes Locking Leg, Air Release Valve and Hardware. Minor Field Modification To Existing Control Valve Cover Plate May Be Necessary. Existing Rear Assembly Must Already Be Equipped with Air Operated System or Upgraded. To Upgrade, Rear Must Have Safety Leg Guide Tube.

Call SVI For Front Frame, Covers, Valving, Tank, Ratchet Parts and Special Adapters



Replacement Lift Cylinder Assembly Kits

7-1/2" Rear Stationary



Rear Replacement Section Consists of:

Rear Cylinder Assembly Complete - Choice of Either Fiberglassed or Non-Fiberglassed - Rear Frame Package with Wheel Chocks, Cover Doors and Conduit and Front Form - Saddle with Standard Axle Engaging Adapters - Choice of Either Manual Release (single-position lock) or Air-Operated (multi-position lock) Safety Leg System.

Compatible with Rear:

Weaver: EC-100, EC-101, EC-102, EC-103

Specifications

Plunger Diameter: 7-1/2"		Oil Displacement: 14 gallons approx.	
Capacity:	Air-Hydraulic	5500 lbs. @ 175 psi - i.e. EC-100, EC-102	
	Electric-Hydraulic	8000 lbs. @ 250 psi - i.e. EC-101, EC-103	
Rise:	74" measured from finished floor to top of adapter		

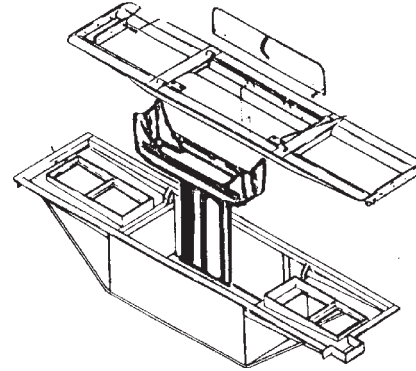
SVI Kit Number	Description (complete cylinder assy. section w/ choices)
SV-102RM	Cylinder Assy. w/ Manual Top Release Single-Position Safety Leg
SV-102RMG	Cylinder Assy. w/ Manual Top Release Single-Position Safety Leg Fiberglassed Cylinder Assembly
SV-102RT	Cylinder Assy. w/ Air-Operated Multi-Position Safety Leg System*
SV-102RTG	Cylinder Assy. w/ Air-Operated Multi-Position Safety Leg System* Fiberglassed Cylinder Assembly

* Air-Operated Multi-Position Safety Leg System Includes Locking Leg, Air Release Valve and Hardware. Minor Field Modification To Existing Control Valve Cover Plate May Be Necessary. Existing Front Assembly Must Already be Equipped with Air Operated System or Upgraded with SV-52F. To Upgrade, Front Must have Safety Leg Guide Tube.



Replacement Lift Cylinder Assembly Kits

7-1/2" Rear Stationary



Rear Replacement Section Consists of:

Rear Cylinder Assembly Complete - Choice of Either Fiberglassed or Non-Fiberglassed - Rear Frame Package with Cover Doors and Conduit and Front Form - Special Saddle with Wheel Engaging or Axle Engaging Option - Choice of Either Manual Release (single-position lock) or Air-Operated (multi-position lock) Safety Leg System.

Compatible with Rear:

Weaver: EC-202, EC-203



Specifications

Plunger Diameter: 7-1/2"		Oil Displacement: 14 gallons approx.	
Capacity:	Air-Hydraulic	5500 lbs. @ 175 psi - i.e. EC-202	
	Electric-Hydraulic	8000 lbs. @ 250 psi - i.e. EC-203	
Rise:	74" measured from finished floor to top of adapter		

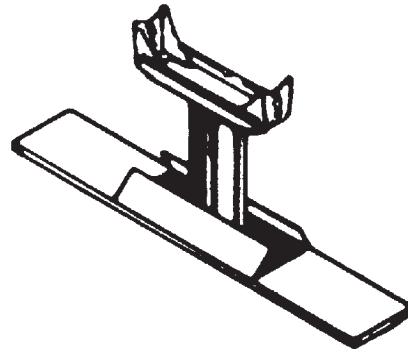
SVI Kit #	Description (complete cylinder assy. section w/ choices)
SV-202RM	Cylinder Assy. w/ Manual Top Release Single-Position Safety Leg
SV-202RMG	Cylinder Assy. w/ Manual Top Release Single-Position Safety Leg Fiberglassed Cylinder Assembly
SV-202RT	Cylinder Assy. w/ Air-Operated Multi-Position Safety Leg System*
SV-202RTG	Cylinder Assy. w/ Air-Operated Multi-Position Safety Leg System* Fiberglassed Cylinder Assembly

* Air-Operated Multi-Position Safety Leg System Includes Locking Leg, Air Release Valve and Hardware. Minor Field Modification To Existing Control Valve Cover Plate May Be Necessary. Existing Front Assembly Must Already be Equipped with Air Operated System or Upgraded with SV-52F. To Upgrade, Front Must have Safety Leg Guide Tube.



Replacement Lift Cylinder Assembly Kits

10-5/8" Rear Stationary



Rear Replacement Section Consists of:

Rear Cylinder Assembly Complete - Choice of Either Fiberglassed or Non-Fiberglassed - Rear Frame Package with Wheel Chocks, Cover Doors and Conduit and Front Form - Saddle with Standard Axle Engaging Adapters with 49" to 24" width adjustment - Choice of Either Manual Release (single-position lock) or Air-Operated (multi-position lock) Safety Leg System.

Compatible with Rear:

Weaver: EC-105, EC-106, MC-302
Rotary: AT60H, AT60E, AT70H, AT70E, R10, R10ML
Globe: MP-210A, MP-210E
Western: AC-810, AC-810E, AC-1010, AC-1010E

Specifications

Plunger Diameter: 10-5/8"		Oil Displacement: 25 gallons approx.	
Capacity:	Air-Hydraulic	12,000 lbs. @ 175 psi	- i.e. EC105, AT60H, AT70H, MP210A, AC810, AC1010
	Electric-Hydraulic	18,000 lbs. @ 250 psi	- i.e. EC106, AT60E, AT70E, MP210E, AC810E, AC1010E
Rise:	69" measured from finished floor to top of adapter		

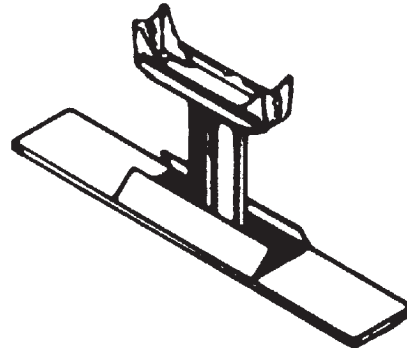
SVI Kit #	Description (complete cylinder assy. section w/ choices)
SV-105106RM	Cylinder Assy. w/ Manual Top Release Single- Position Safety Leg
SV-105106RMG	Cylinder Assy. w/ Manual Top Release Single- Position Safety Leg Fiberglassed Cylinder Assembly
SV-105106RT	Cylinder Assy. w/ Air-Operated Multi-Position Safety Leg System*
SV-105106RTG	Cylinder Assy. w/ Air-Operated Multi-Position Safety Leg System* Fiberglassed Cylinder Assembly

* Air-Operated Multi-Position Safety Leg System Includes Locking Leg, Air Release Valve and Hardware. Minor Field Modification To Existing Control Valve Cover Plate May Be Necessary. Existing Front Assembly Must Already be Equipped with Air Operated System or Upgraded with SV-56F. To Upgrade, Front Must have Safety Leg Guide Tube.



Replacement Lift Cylinder Assembly Kits

10-5/8" Rear Stationary



Rear Replacement Section Consists of:

Rear Cylinder Assembly Complete - Choice of Either Fiberglassed or Non-Fiberglassed - Rear Frame Package with Wheel Chocks, Cover Doors, Conduit Form and Front Form - Saddle with Standard Axle Engaging Adapters with 44" to 24" width adjustment - Choice of Either Manual Release (single-position lock) or Air-Operated (multi-position lock) Safety Leg System.

Compatible with Rear:

Weaver: EC-105BM, EC-106BM, EC-107, EC-108, MC-303

Specifications

Plunger Diameter: 10-5/8"		Oil Displacement: 25 gallons approx.	
Capacity:	Air-Hydraulic	12,000 lbs. @ 175 psi - i.e. EC107, EC-105BM	
	Electric-Hydraulic	18,000 lbs. @ 250 psi - i.e. EC108, EC-106BM, MC-303	
Rise:	69" measured from finished floor to top of adapter		

SVI Kit #	Description (complete cylinder assy. section w/ choices)
SV-107108RM	Cylinder Assy. w/ Manual Top Release Single-Position Safety Leg
SV-107108RMG	Cylinder Assy. w/ Manual Top Release Single- Position Safety Leg Fiberglassed Cylinder Assembly
SV-107108RT	Cylinder Assy. w/ Air-Operated Multi-Position Safety Leg System*
SV-107108RTG	Cylinder Assy. w/ Air-Operated Multi-Position Safety Leg System* Fiberglassed Cylinder Assembly

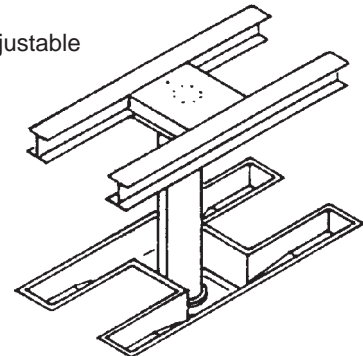
* Air-Operated Multi-Position Safety Leg System Includes Locking Leg, Air Release Valve and Hardware. Minor Field Modification To Existing Control Valve Cover Plate May Be Necessary. Existing Front Assembly Must Already be Equipped with Air Operated System or Upgraded with SV-52F or SV-56F. To Upgrade, Front Must have Safety Leg Guide Tube.



Replacement Lift Cylinder Assembly Kits

10-5/8" Rear Stationary

Note: supplied with adjustable saddles and adapters.



Rear Replacement Section Consists of:

Rear Cylinder Assembly Complete - Choice of Either Fiberglassed or Non-Fiberglassed I-Beam style superstructure equipped with saddles and adapters to engage vehicle axles, suspension or cross frame members - Choice of Either Manual Release (single-position lock) or Air-Operated (multi-position lock) Safety Leg System.

Compatible with Rear:

Rotary: AT/RT70DSE



Specifications

Plunger Diameter: 10-5/8"		Oil Displacement: 25 gallons approx.	
Capacity:	Air-Hydraulic	12,000 lbs.	@ 175 psi - i.e.
	Electric-Hydraulic	18,000 lbs.	@ 250 psi - i.e.
Rise:	69" measured from finished floor to top of adapter		

SVI Kit #	Description (complete cylinder assy. section w/ choices)
SV-337M	Cylinder Assy. w/ Manual Top Release Single- Position Safety Leg
SV-337MG	Cylinder Assy. w/ Manual Top Release Single- Position Safety Leg Fiberglassed Cylinder Assembly
SV-337T	Cylinder Assy. w/ Air-Operated Multi-Position Safety Leg System*
SV-337TG	Cylinder Assy. w/ Air-Operated Multi-Position Safety Leg System* Fiberglassed Cylinder Assembly

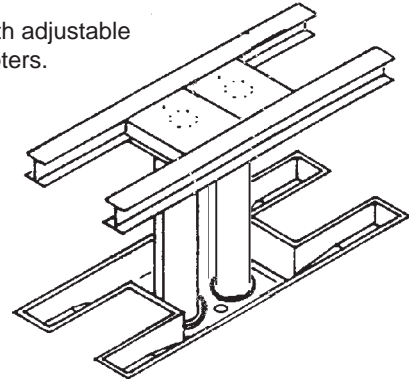
* Air-Operated Multi-Position Safety Leg System Includes Locking Leg, Air Release Valve and Hardware. Minor Field Modification To Existing Control Valve Cover Plate May Be Necessary. Existing Front Assembly Must Already be Equipped with Air Operated System or Upgraded with SV-52F or SV-56F. To Upgrade, Front Must have Safety Leg Guide Tube.



Replacement Lift Cylinder Assembly Kits

Note: supplied with adjustable saddles and adapters.

10-5/8" Dual Rear Stationary (in Tandem)



Rear Replacement Section Consists of:

Rear Cylinder Assembly Complete - Fiberglassed in tandem casings - I-Beam style superstructure equipped with saddles and adapters to engage vehicle axles, suspension or cross frame members - Choice of Either Manual Release (single-position lock) or Air-Operated (multi-position lock) Safety Leg System.

Compatible with Rear:

Rotary: AT/RT10210DSE

Specifications

Plunger Diameter: 10-5/8"		Oil Displacement: 25 gallons approx.	
Capacity:	Air-Hydraulic	12,000 lbs.	@ 175 psi - i.e.
	Electric-Hydraulic	18,000 lbs.	@ 250 psi - i.e.
Rise:	69" measured from finished floor to top of adapter		

SVI Kit #	Description (complete cylinder assy. section w/ choices)
SV-339MG	Cylinder Assy. w/ Manual Top Release Single-Position Safety Leg Fiberglassed Cylinder Assembly
SV-339TG	Cylinder Assy. w/ Air-Operated Multi-Position Safety Leg System* Fiberglassed Cylinder Assembly

* Air-Operated Multi-Position Safety Leg System Includes Locking Leg, Air Release Valve and Hardware. Minor Field Modification To Existing Control Valve Cover Plate May Be Necessary. Existing Front Assembly Must Already be Equipped with Air Operated System or Upgraded with SV-52F or SV-56F. To Upgrade, Front Must have Safety Leg Guide Tube.



Replacement Lift Cylinder Assembly Kits

10-5/8" Dual Rear Stationary



Rear Replacement Section Consists of:

Dual Rear Cylinder Assembly Complete - Choice of Either Fiberglassed or Non-Fiberglassed - Rear Frame Package with Wheel Chocks, Cover Doors and Conduit and Front Form - Saddle with Standard Axle Engaging Adapters with 49" to 24" width adjustment - Manual Release or Air-Operated (multi-position lock) Safety Leg System.

Compatible with Rear:

Weaver: EC-106DR, MC-307
Rotary: AT10210E, R210ML
Gilbarco: A-3FM5
Globe: 310E
Western: AC-10210E

Specifications

Plunger Diameter: (2) 10-5/8"	Oil Displacement: 50 gallons approx.
Capacity:	Electric-Hydraulic 36,000 lbs. @ 250 psi - i.e. EC106DR, MC-307, AT10210E, R210ML, A-3FM5, AC10210E
Rise:	69" measured from finished floor to top of adapter



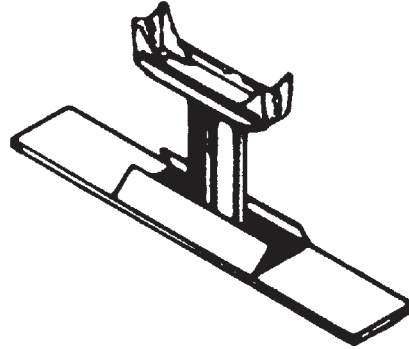
SVI Kit #	Description
	(complete cylinder assy. section w/ choices)
SV-307MG	Cylinder Assy. w/ Manual Top Release Single-Position Safety Leg Fiberglassed Cylinder Assembly
SV-307TG	Cylinder Assy. w/ Air-Operated Multi-Position Safety Leg System* Fiberglassed Cylinder Assembly

* Air-Operated Multi-Position Safety Leg System Includes Locking Leg, Air Release Valve and Hardware. Minor Field Modification To Existing Control Valve Cover Plate May Be Necessary. Existing Front Assembly Must Already be Equipped with Air Operated System or Upgraded with SV-56F. To Upgrade, Front Must have Safety Leg Guide Tube.



Replacement Lift Cylinder Assembly Kits

12-5/8" Rear Stationary



Rear Replacement Section Consists of:

Rear Cylinder Assembly Complete - Choice of Either Fiberglassed or Non-Fiberglassed Rear Frame Package with Wheel Chocks, Cover Doors and Conduit and Front Form - Saddle with Standard Axle Engaging Adapters with 49" to 24" width adjustment - Choice of Either Manual Release (single-position lock) or Air-Operated (multi-position lock) Safety Leg System.

Compatible with Rear:

- Weaver:** MC-330
- Rotary:** AT1012E, R12, R12ML
- Globe:** MP-1012E
- Western:** AC-1012E

Specifications

Plunger Diameter: 12-5/8"		Oil Displacement: 38 gallons approx.	
Capacity:	Air-Hydraulic	15,000 lbs.	@ 175 psi
	Electric-Hydraulic	25,000 lbs.	@ 250 psi
Rise:	69" measured from finished floor to top of adapter		

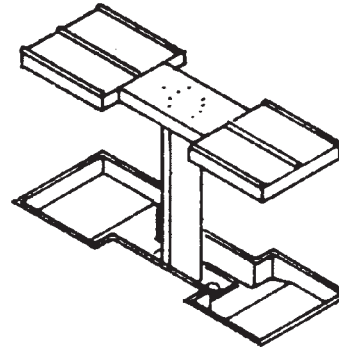
SVI Kit #	Description (complete cylinder assy. section w/ choices)
SV-330M	Cylinder Assy. w/ Manual Top Release Single-Position Safety Leg
SV-330MG	Cylinder Assy. w/ Manual Top Release Single-Position Safety Leg Fiberglassed Cylinder Assembly
SV-330T	Cylinder Assy. w/ Air-Operated Multi-Position Safety Leg System*
SV-330TG	Cylinder Assy. w/ Air-Operated Multi-Position Safety Leg System* Fiberglassed Cylinder Assembly

* Air-Operated Multi-Position Safety Leg System Includes Locking Leg, Air Release Valve and Hardware. Minor Field Modification To Existing Control Valve Cover Plate May Be Necessary. Existing Front Assembly Must Already be Equipped with Air Operated System or Upgraded with SV-56F. To Upgrade, Front Must have Safety Leg Guide Tube.



Replacement Lift Cylinder Assembly Kits

12-5/8" Rear Stationary



Rear Replacement Section Consists of:

Rear Cylinder Assembly Complete - Choice of Either Fiberglassed or Non-Fiberglassed Dual dish wheel chock superstructure (wheel engaging) - Choice of Either Manual Release (single-position lock) or Air-Operated (multi-position lock) Safety Leg System.

Compatible with Rear:

Weaver: MC-331

Specifications

Plunger Diameter: 12-5/8"		Oil Displacement: 38 gallons approx.	
Capacity:	Air-Hydraulic	15,000 lbs.	@ 175 psi
	Electric-Hydraulic	25,000 lbs.	@ 250 psi
Rise:	69" measured from finished floor to top of adapter		

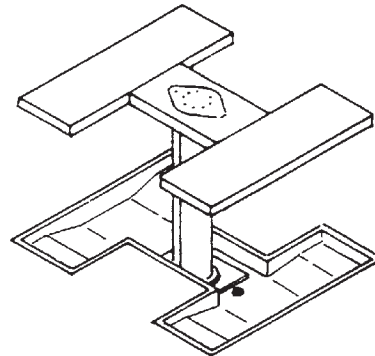
SVI Kit #	Description (complete cylinder assy. section w/ choices)
SV-331M	Cylinder Assy. w/ Manual Top Release Single-Position Safety Leg
SV-331MG	Cylinder Assy. w/ Manual Top Release Single-Position Safety Leg Fiberglassed Cylinder Assembly
SV-331T	Cylinder Assy. w/ Air-Operated Multi-Position Safety Leg System*
SV-331TG	Cylinder Assy. w/ Air-Operated Multi-Position Safety Leg System* Fiberglassed Cylinder Assembly

* Air-Operated Multi-Position Safety Leg System Includes Locking Leg, Air Release Valve and Hardware. Minor Field Modification To Existing Control Valve Cover Plate May Be Necessary. Existing Front Assembly Must Already be Equipped with Air Operated System or Upgraded with SV-56F. To Upgrade, Front Must have Safety Leg Guide Tube.



Replacement Lift Cylinder Assembly Kits

12-5/8" Rear Stationary



Rear Replacement Section Consists of:

Rear Cylinder Assembly Complete - Choice of Either Fiberglassed or Non-Fiberglassed - Wheel engaging by means of drive on runways - Choice of Either Manual Release (single-position lock) or Air-Operated (multi-position lock) Safety Leg System.

Compatible with Rear:

Weaver: MC-333

Specifications

Plunger Diameter: 12-5/8"		Oil Displacement: 38 gallons approx.
Capacity:	Air-Hydraulic	15,000 lbs. @ 175 psi
	Electric-Hydraulic	25,000 lbs. @ 250 psi
Rise:	69" measured from finished floor to top of adapter	

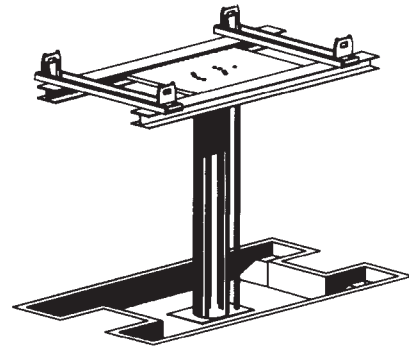
SVI Kit #	Description (complete cylinder assy. section w/ choices)
SV-333M	Cylinder Assy. w/ Manual Top Release Single-Position Safety Leg
SV-333MG	Cylinder Assy. w/ Manual Top Release Single-Position Safety Leg Fiberglassed Cylinder Assembly
SV-333T	Cylinder Assy. w/ Air-Operated Multi-Position Safety Leg System*
SV-333TG	Cylinder Assy. w/ Air-Operated Multi-Position Safety Leg System* Fiberglassed Cylinder Assembly

* Air-Operated Multi-Position Safety Leg System Includes Locking Leg, Air Release Valve and Hardware. Minor Field Modification To Existing Control Valve Cover Plate May Be Necessary. Existing Front Assembly Must Already be Equipped with Air Operated System or Upgraded with SV-56F. To Upgrade, Front Must have Safety Leg Guide Tube.



Replacement Lift Cylinder Assembly Kits

12-5/8" Front/Rear Stationary



Front/Rear Replacement Section Consists of:

Front/Rear Cylinder Assembly Complete - Choice of Either Fiberglassed or Non-Fiberglassed - I-Beam style superstructure equipped with adjustable saddles and adapters to engage vehicle axles, suspension or cross frame member - Choice of Either Manual Release (single-position lock) or Air-Operated (multi-position lock) Safety Leg System. This section can be used as either front or rear or both.

Compatible with Front/Rear:

Globe: D-SH-1012E, D-SH-212E
Rotary: Rear of AT1012DS H&E
Weaver: MC-335

Specifications

Plunger Diameter: 12-5/8"	Oil Displacement: 38 gallons approx.	
Capacity:	Air-Hydraulic	15,000 lbs. @ 175 psi
	Electric-Hydraulic	25,000 lbs. @ 250 psi
Rise:	69" measured from finished floor to top of adapter	

SVI Kit #	Description (complete cylinder assy. section w/ choices)
SV-335M	Cylinder Assy. w/ Manual Top Release Single-Position Safety Leg
SV-335MG	Cylinder Assy. w/ Manual Top Release Single-Position Safety Leg Fiberglassed Cylinder Assembly
SV-335T	Cylinder Assy. w/ Air-Operated Multi-Position Safety Leg System*
SV-335TG	Cylinder Assy. w/ Air-Operated Multi-Position Safety Leg System* Fiberglassed Cylinder Assembly

* Air-Operated Multi-Position Safety Leg System Includes Locking Leg, Air Release Valve and Hardware. Minor Field Modification To Existing Control Valve Cover Plate May Be Necessary. Existing Front Assembly Must Already be Equipped with Air Operated System or Upgraded with SV-56F. To Upgrade, Front Must have Safety Leg Guide Tube.

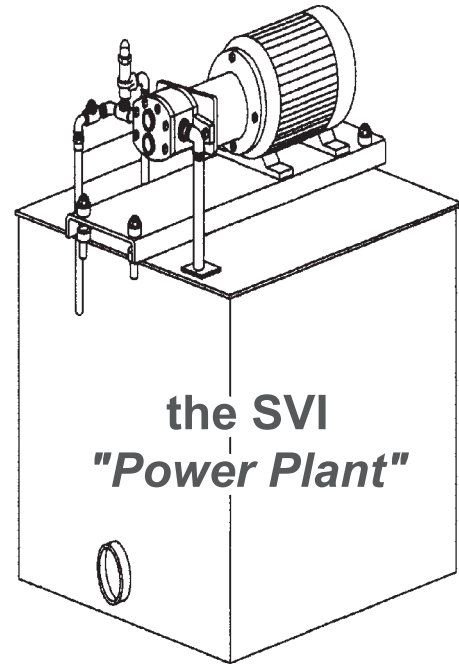


Options and Accessories for Front & Rear Lifts

Electric Hydraulic Power Units

SVI #	Description
SV-60-1	Power Unit - Complete 60 Gallon Capacity
SV-61-1	Power Unit - Complete 120 Gallon Capacity
SV-62-1	Power Unit - Complete 170 Gallon Capacity

Includes: 40 G.P.M. Gear Pump, By Pass Regulating Valve and "C" Flange Mounting and 208-230/460V 3Ø TEFC Electric Motor.



A better engine for heavy duty lifting!

The SVI "Power Plant" features a "C" flange mounting for the pump and motor. This precision component allows for correct alignment (within .002) between the motor and pump shafts. This virtually eliminates premature spider wear, pump wear and failure, and reduces shaft and gear noise, caused by misalignment commonly found with other power units.

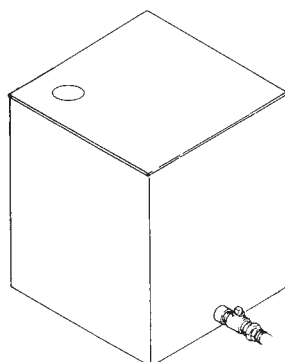
Through distributor input, each "Power Plant" also comes complete with an in-line check valve. The in-line check valve prevents back pressure caused by faulty oil control valves from reaching the pump. This is an industry first!

To further enhance this product a pressure gauge port and an anti-cavitation valve are included. The anti-cavitation valve helps keep air from getting to the pump. Also, to keep vibration noise to a minimum, the main mounting plate is elevated using rubber anti-vibration grommets.

The electric motor was upgraded as well. The "Power Plant" is supplied with a TEFC (totally enclosed fan cooled) motor which meets Federal efficiency levels, lowering operating costs. TEFC motors run cooler, lasting longer which is an important feature where multiple lifts are run off the same "Power Plant". Compared to open-drip-proof motors, TEFC motors are designed for use in dusty, dirty environments where 3 phase power is available.

We have also made changes to the tank by adding two baffles to reduce return oil turbulence. This keeps contaminants away from the inlet and helps dissipate air bubbles during multiple lift use applications. The SV-62-1 "Power Plant" can operate up to three 10-5/8" fore and aft lifts (six 10-5/8" cylinders).

For virtually all heavy duty lifting applications - **SVI is your answer!**



Auxiliary Reservoirs:

SVI #	Description
SV-63	60 Gallon Bare Tank - No Mounting Plate
SV-64	120 Gallon Bare Tank - No Mounting Plate
SV-65	170 Gallon Bare Tank - No Mounting Plate

Electric Motors:

SVI #	Description
SV-37*	Motor 7-1/2 H.P. - 230/460 VAC - 3 Phase - 60 Cycle - 1800 RPM
SV-40*	Motor 7-1/2 H.P. - 200/208 VAC - 3 Phase - 60 Cycle - 1800 RPM

* These motors for replacement on original Weaver, Challenger, Rotary, etc. supplied power unit using 213T frame. Not for use on an SVI **Power Plant**TM power unit.

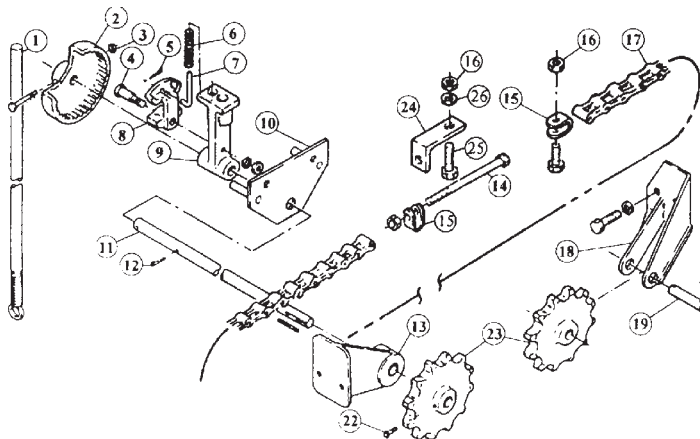
Magnetic Starters:

SVI #	Description
SV-42	Magnetic Starter for 7-1/2 H.P. - 208/230/460 VAC - 3 Phase - Electric Motor. NEMA 1 Enclosure with Push Button "Start Stop" on the Cover. (specify motor voltage)
SV-43	Magnetic Starter for 7-1/2 H.P. - 208/230/460 VAC - 3 Phase - Electric Motor. NEMA 1 Enclosure with Push Button "Start Stop" on the Cover. (specify motor voltage) Also Includes Step Down Transformer to 115 Volts for Remote Push Button Station Where Needed.



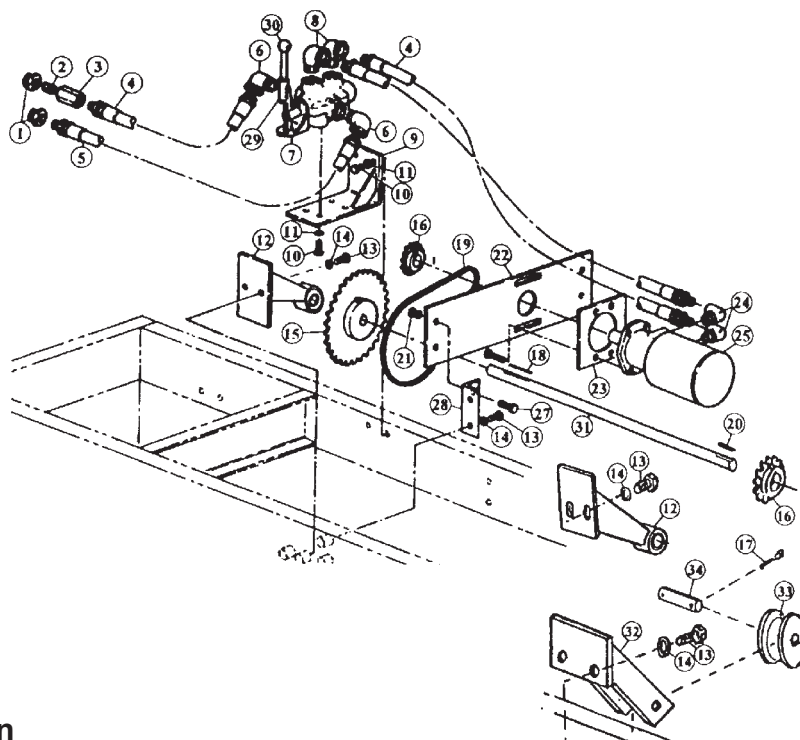
Options and Accessories for Front & Rear Lifts

Front Cylinder Ratchet Kits



Manual Ratchet Kit:

SVI #	Description
SV-30	Manual Ratchet Kit - Includes all Major Parts and Hardware Necessary to Retrofit or Upgrade Weaver Models EC-105B & EC-106B After 1974. (will also work on SVI 10-5/8" Front Moveable Cylinder Assemblies)



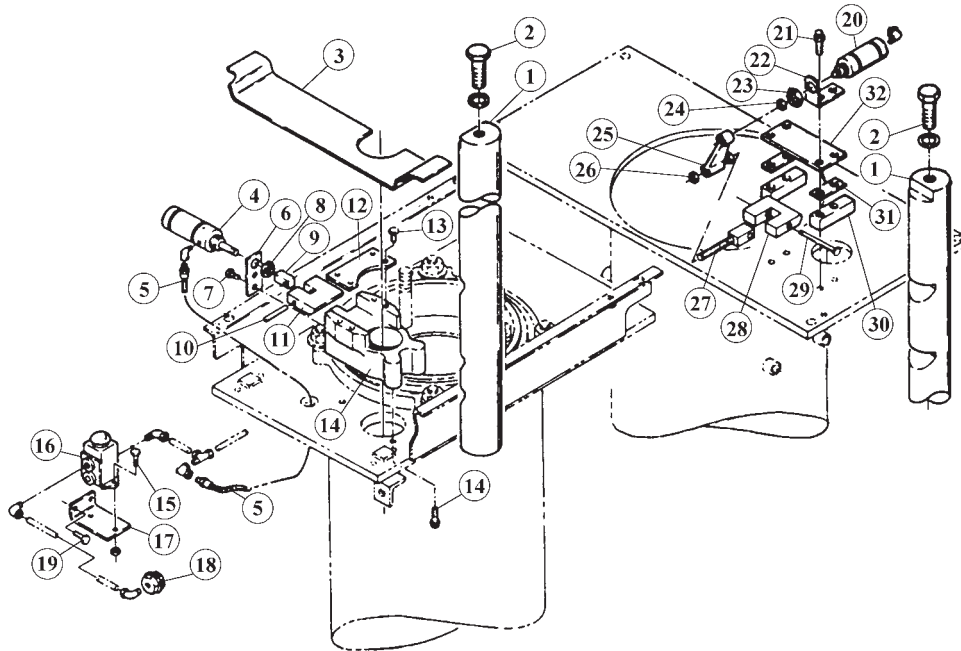
Power Ratchet Kit:

SVI #	Description
SV-32	Hydraulic Operated Power Ratchet - Includes all Major Parts and Necessary Hardware to Retrofit or Upgrade Weaver Model EC-106B. This Kit can Convert the Ratchet System from Manual to Power or can Directly Replace Existing Weaver EC-32 Power Spot. (will also work on SVI 10-5/8" Front Moveable Cylinder Assemblies equipped with Electric-Hydraulic Pumping Unit)



Options and Accessories for Front & Rear Lifts

Air-Operated Multi-Position Safety Leg Systems



SVI #	Plunger	Size	for Models:
SV-52F	Front	7-1/2"	EC-102, EC-103, EC-202, EC-203
SV-52R	Rear	7-1/2"	EC-102, EC-103, EC-202, EC-203
SV-54F	Front	7-1/2"	EC-107, EC-108
SV-54R	Rear	10-5/8"	EC-107, EC-108, MC-303
SV-56F	Front	10-5/8"	EC-105, EC-106, MC-301, MC-304
SV-56R	Rear	10-5/8"	EC-105, EC-106, MC-302
SV-57	Dual F/R	10-5/8"	EC-106DR, MC-306, MC-307, MC-308, MC-309
BH-9668-06C	Rear	12-5/8"	MC-330

Air-Operated Multi-Position Safety Leg Systems Consist of Solid Steel Safety Leg, Necessary Lock Assembly Parts and Hardware. Kits Do Not Include New Casings, Axles or Air Line Tubing.

Air-Operated Multi-Position Safety Leg Systems can Retrofit or Be Used to Upgrade Any Weaver Lift that Originally had Either Air-Operated or Manual Safety Legs. Older Lifts that Never had Safety Legs will Require New Casings and Possibly Axles. Please Call for Details.

For Individual Parts Listing, See SVI Lift Repair Catalog "Weaver #LRC9600" containing all repair parts for Weaver and SVI Lifts.



Optional Accessories

SVI #	Description
BH-9830-15	15 lb. Anode
BH-9830-30	30 lb. Anode
BH-9980-00	1/2" Dielectric Union
BH-9980-01	1" Dielectric Union
BH-9982-01	2" N.P.T. Shut-Off Valve for Power Unit
FK-32-0500	1/2" Ball Valve 600 W.O.G.
FK-32-0750	3/4" Ball Valve 600 W.O.G.
FK-32-1000	1" Ball Valve 600 W.O.G.
BH-9900-02	2" X 100' Pipe Wrap Tape - Corrosion Resistant
BH-9900-04	4" X 100' Pipe Wrap Tape - Corrosion Resistant
BH-9971-55	55 Gallon Drum - Hydraulic Oil w/Anti-Foam, Anti-Rust
BH-9971-05	5 Gallon Pail - Hydraulic Oil w/Anti-Foam, Anti-Rust
BH-9972-55	55 Gallon Drum - Hydraulic Oil - Biodegradable ISO-VG-32
BH-9972-05	5 Gallon Pail - Hydraulic Oil - Biodegradable ISO-VG-32

For Individual Parts Listings on Weaver and SVI Lifts, See SVI's Lift Repair Catalog Weaver #LRC9600.

Call your SVI Rep today!





You need this . . .



You don't have the part number, but SVI sales professionals can still find the part. Offering over 12,000 parts like this gasket, our sales pros are cross-trained on nearly every in-ground and surface mount lift in use today. Convenience like this has made SVI the leader in lift repair parts throughout North America. From three **"Ready Ship"** warehouses to producing obsolete parts - SVI has earned the reputation as your **Direct Fit** source. ***SVI is your Answer!***

[BALTIMORE • CHICAGO • LOS ANGELES]
(800) 321-8173 • fax: (800) 899-1784
www.sviinternational.com

**TERMS AND CONDITIONS OF THE
SALES ORDER
FOR SVI INTERNATIONAL, INC.**

1. **GENERAL.** The terms and conditions of sales order outlined herein shall apply to the sale by SVI INTERNATIONAL, INC. (hereinafter referred to as "Company") of the items described on the facing page (hereinafter referred to as "Merchandise") to Purchaser.
2. **DELIVERY.** Delivery shall be deemed to be complete when the Merchandise has been shipped F.O.B. Company's plants in DeKalb, Illinois, Duarte, California; and Baltimore, Maryland ("Company's plants"). Shipments are subject to delays from causes or contingencies beyond the reasonable control of the Company. When otherwise not specified, shipments will be made in standard containers via carrier which, in the judgment of the Company, will result in the most practical method. Title and right of possession will pass to the Purchaser upon receipt by the carrier at the shipping point. If a customer of the Company should specify a specific carrier's method of shipment (i.e. UPS Next Day Air) and that carrier does not perform to the customer's expectations, freight credit to a customer's account will not be issued unless the Company can first obtain a credit.
3. **RISK OF LOSS.** Identification of the Merchandise under Uniform Commercial Code (hereinafter referred to as "UCC") Section 2-501 shall take place at the moment of shipment F.O.B. Company's plants. Risk of loss shall pass to the Purchaser when the Merchandise is shipped from the Company's plants.
4. **TITLE.** Title to the merchandise shall transfer to the Purchaser when the Merchandise is shipped from the Company's plants.
5. **WARRANTIES.** The Company guarantees its products to be free from defects in workmanship and raw materials for a period of one year from date of purchase. THIS WARRANTY IS EXPRESSLY IN LIEU OF ANY AND ALL WARRANTIES EXPRESS OR IMPLIED. COMPANY DOES NOT WARRANT THE MERCHANDISE IS MERCHANTABLE OR FIT FOR ANY PARTICULAR PURPOSE. Company's liability for breach of the terms of this Agreement, including any warranty, is limited to either refund of the invoice price of the Merchandise or at Company's option, replacement of the Merchandise free of charge, including transportation charges but not including the cost of labor. Purchaser has not relied on any statement or upon the conduct of Company with respect to the prospective use of the merchandise. Company shall not be liable for and Purchaser waives any and all claims for any loss or damage, directly or indirectly, arising from the use of the Merchandise and for punitive, incidental or consequential damages, including, but not limited to, damages to property, for loss of use, loss of time, loss of profit or loss of income. The Company does not authorize the sale of our products under any other warranty, expressed or implied.
6. **SETOFF.** All claims for money due or to become due from the Company shall be subject to deduction by the Company for any setoff or counterclaim arising out of this or any other claims of the Company or its affiliated companies, whether such setoff or counterclaim arose before or after any assignment by Purchaser.
7. **INDEMNIFICATION.** Purchaser agrees to indemnify the Company and hold it harmless from and against all claims, liability, loss, damage or expense, including reasonable counsel fees, arising from or by reason of any modifications or alterations made by Purchaser. If a customer of the Company modifies or alters any part, in any manner whatsoever, or uses any part in departure from recommended performance specifications, said customer agrees to indemnify and hold the Company harmless from and against all liability and expenses based on damage to property or injury to or death of any person arising out of or attributable to such modified or altered part. Further, the Company will not accept any such modified or altered part for credit to a customer's account.
8. **FREIGHT POLICY.** Freight charges on individual orders less than \$3,000 in net value are prepaid and added to invoice or collect F.O.B. shipping point. Freight charges (standard ground service and continental US only) on individual orders more than \$3,000 net value are paid by the Company F.O.B. shipping point. Note: customers with C.O.D. terms are responsible for all carrier C.O.D. fees regardless of order net value.
9. **RETURN POLICY.** To return parts for credit or inspection Purchaser must first contact the Company to obtain a Return Goods Authorization number (RGA#). Once Purchaser has obtained an RGA# the parts can be returned freight prepaid only. The RGA# must be on the outside of the container in a highly visible location. All parts must be returned freight prepaid and the shipment must include a letter of explanation giving the specific reason for return including details as to the conditions under which the part or parts operated. Note: parts returned without an RGA#, freight collect or without written explanation may be refused. Parts which have been used in any way or manner, including any installation or incorporation into a lift or hoist, shall NOT be eligible for return whether or not an RGA has been assigned.
10. **RESTOCK CHARGE.** Returns are subject to up to twenty-five (25%) restocking charge. Refusals are subject to the same restocking charge plus the cost of outbound and return freight charges and/or fees incurred by the Company due to shipment refusal.
11. **PRICES AND PAYMENTS.** All prices are subject to change without notice. All prices are F.O.B. shipping point. The Company standard terms are net 30 days, C.O.D. company check, C.O.D. cash, VISA, MasterCard, Discover or American Express. However, if in the judgment of the Company, the financial condition of the Purchaser at any time does not justify shipment according to standard terms of payment, the Company may require full or partial payment in advance.
12. **INTERPRETATION.** This sales order is intended by the parties as a complete and exclusive statement of the terms of their agreement. It supersedes all prior agreements, written or oral. No course of prior dealings between the parties and no usage of the trade shall be relevant to supplement or explain any terms used in this sales order. Acceptance or acquiescence in a course of performance rendered under this purchase order shall not be relevant to determine the meaning of this sales order even though the accepting or acquiescing party has knowledge of the nature of the performance and opportunity for objection. Whenever a term defined by the UCC is used in this sales order the definition contained in the UCC shall control.
13. **MODIFICATION.** This sales order can be modified or rescinded only by a writing signed by both parties.
14. **WAIVER.** No claim or right arising out of a breach of this sales order can be discharged in whole or in part by a waiver or renunciation of the claim or right unless such waiver or renunciation is supported by consideration and is in writing signed by the aggrieved party.
15. **ASSIGNMENT.** No right or interest in this sales order shall be assigned by either party without the written consent of the other and no delegation of any obligation owed, or of the performance of any obligation by either the Company or Purchaser shall be made without the written consent of the other party. Any attempted assignment or delegation not made in conformity with this paragraph shall be wholly void and totally ineffective for all purposes.
16. **TIME TO PERFORM AND BRING ACTION.** Time is of the essence of this sales order. Any action for breach of this sales order shall be commenced within two (2) years after the cause of action has accrued. Any party who loses any litigation shall reimburse the other party for costs including reasonable attorneys fees. The exclusive jurisdiction for any legal action shall be the Circuit Court of DeKalb County, Illinois.
17. **APPLICABLE LAW.** This sales order shall be governed by the UCC of Illinois as effective and in force on the date of this sales order.

Offering the Best in Automotive Lift Repair Parts and More!

Auto Lift Cables • Auto Lift Parts • Brake Lathe Repair Parts

Compressed Air Repair Parts • Exhaust System Products • Fluid Delivery Repair Parts

Lubrication Equipment Repair Parts • Repair Parts for Gasboy Consumer Series

Service Station Pump and Tank Products • SVI Misc Auto Lift Products and Catalogs

Tire Changer Repair Parts • Vehicle Lifting Systems • Wheel Balancer Accessories

Serving the Industry Since 1977 • Same-Day Shipping



SVI International, Inc.

(800) 321-8173 • fax: (800) 899-1784

155 Harvestore Drive • DeKalb, IL 60115

www.sviinternational.com

BALTIMORE • CHICAGO • LOS ANGELES

While the utmost care has been used in compiling this reference material, we assume no responsibility for errors. Specifications are subject to change without notice. This edition supersedes all previous editions or issues. SVI reference material is subject to change without notice. All rights reserved.