

Automotive Lift

R E P A I R P A R T S



SVI International, Inc.
(800) 321-8173 • fax: (800) 899-1784
155 Harvestore Drive • DeKalb, IL 60115
www.sviinternational.com

BALTIMORE • CHICAGO • LOS ANGELES

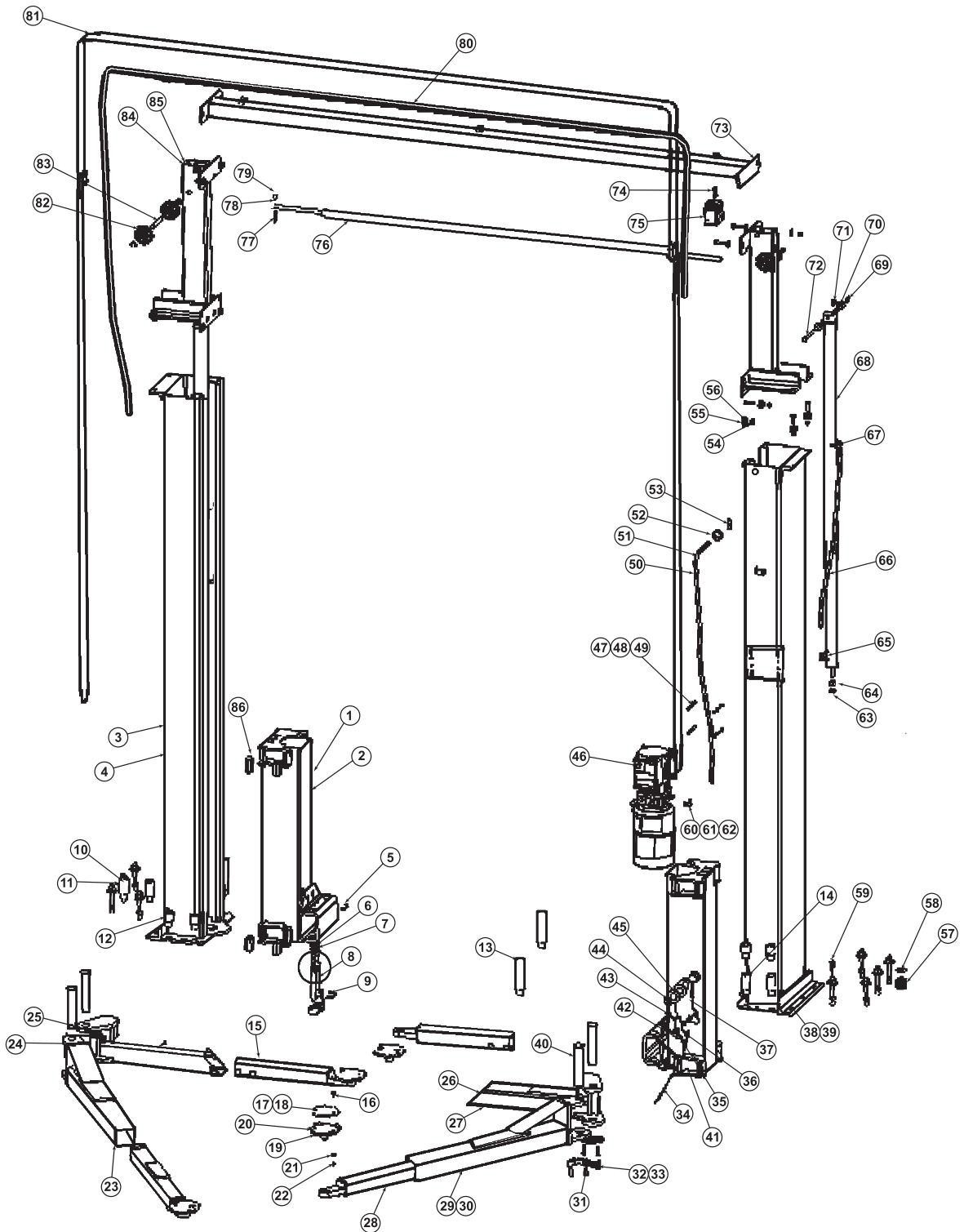
Repair Parts for: **Forward**

Repair Parts for:
Forward

LRC7235



for lift model DP-10, DP-10A



All names, numbers, symbols and descriptions are used for reference purposes only. It is not implied that any part listed is the product of these manufacturers; however, some parts may be the actual product of these manufacturers.

LRC7235 - 6.15.10

SVI "Direct Fit" brand Lift Repair Parts for Forward lifts.

entire contents copyright © 2010 SVI International, Inc.

for lift model DP-10, DP-10A

Item	SVI part #	OEM #	Req	Description
1	call for price	1070500	2	Carriage Assembly
2	call for price	1070501	2	Carriage Weldment
3	call for price	1070105	1	Column
4	call for price	1070104	1	Column
5	F-RR-0750	991504	10	3/4" Klip-Ring
6	BH-7239-79	143537	4	Arm Restraint Spring
7	BH-7239-78S	116533	4	Actuator Pin Spacer
8	BH-7239-78	143536	4	Actuator Pin
9	F-RP-250-1500	991060	4	1/4" Roll Pin x 1-1/2" Lg.
10	BH-7089-99A			5" Nesting Pad Extension
11	BH-7239-120	994257	1	Nesting Pad Extension Kit
12	BH-7235-72	996220	4	1-1/2" Nesting Pad Extension
13	BH-7089-99B	995550	4	6" Nesting Pad Extension
14	BH-7089-98	995560	4	3" Nesting Pad Extension
15	BH-7239-48	1070631	2	Inner Front Swing Arm DP-10A
	BH-7239-47	1070629	2	Inner Front Swing Arm DP-10
16	F-EB-0250-20-1250	991243	8	1/4-20 x 1-1/4" Elevator Bolt
17	BH-7235-90	994105	1	Rubber Pad Kit - standard duty
18	BH-7235-90A	991234	4	Rubber Pad - standard duty
19	BH-7089-97	106605	4	Adapter Base and Pad 1-1/4" Pin
20	BH-7235-90K		1	Rubber Pad Kit - heavy duty
21	F-FW-0250-USS	911405	8	1/4" Flat Washer
22	F-NL-0250-20	911401	8	1/4-20 Nylock Nut
23	F-HC-0375-16-0500	991487	4	3/8-16 x 1/2" Hex Head Capscrew
24	BH-7239-82A	1070623	1	Outer Rear Swing Arm LH - DP-10A.
	BH-7239-230	1080602	1	Outer Rear Swing Arm LH - DP-10
25	BH-7239-82	1070622	1	Front Arm Assembly LH- DP-10A.
	BH-7239-231	1080601	1	Front Arm Assembly LH - DP-10
26	BH-7239-232	1070624	1	Front Arm Assembly RH- DP-10A..
	BH-7239-231	1080601	1	Front Arm Assembly RH- DP-10
27	BH-7239-233	1070625	1	Outer Swing Arm RH - DP-10A
	BH-7239-230	1080602	1	Outer Swing Arm RH - DP-10
28	BH-7239-47	1070629	2	Rear Arm Slider Long
29	BH-7239-234	1070619	2	Rear Arm Assembly - DP-10A
	BH-7239-231	1080601	2	Rear Arm Assembly -DP-10 or 10AN
30	BH-7239-87	1070620	2	Outer Rear Swing Arm - DP-10A
	BH-7239-230	1080602	2	Outer Rear Swing Arm - DP-10, 10AN
31	F-HC-0375-16-0500	912061	8	3/8-16 Hex Head Capscrew
32	BH-7239-77-4	994258	1	Arm Restraint Gear Kit
33	BH-7545-16	143534	4	Arm Restraint Gear
34	BH-7239-108	143540	2	Latch Pull Rod
35	F-FW-0375	912005	4	3/8" Flat Washer
36	BH-7235-65	991070	2	Cap Nut
37	BH-7235-45	106502	2	Safety Latch Weldment
38	call for price	1070106	1	Column
39	call for price	1070107	1	Column
40	BH-7235-34	995430	4	Swing Arm Pin
41	BH-7237-86	991071	2	Spring Latch
42	F-RR-0375	991503	2	3/8" Klip-Ring
43	BH-7235-63	070528	2	Latch Release Pawl
44	BH-7237-85	991030	2	Top Rail Snap Ring
45	F-FW-1250-SAE	915206	4	1-1/4" SAE Washer
46	BH-7006A	992017	1	Single Phase Power Unit
47	F-NL-0312-18	911703	4	5/16-18 Nylock Nut
48	F-HN-0312-18	911701	4	5/16-18 Hex Nut

49	F-HC-0312-18-1250	911751	4	5/16-18 x 1-1/4" HEX Head Capscrew
50	n/a	994205	1	Hydraulic Kit - Standard Models
	n/a	994206	1	Hydraulic Kit - 2' Ext. Height Models
	n/a	107H900	1	Hydraulic Kit - High Rise Models
51	BH-7236-50	992101	1	Hydraulic Hose 68"
52	BH-7239-110	991491	1	Rubber Grommet
53	BH-7236-43	992502	1	3/8" JIC Tee
54	F-HN-0500-13	912601	16	1/2-13 Hex Nut
55	F-HC-0500-13-1750	912671	16	1/2-13 x 1-3/4 Hex Head Capscrew
56	F-FW-0500	912605	40	1/2" Flat Washer
57	BH-7512-90A			1/16" Shim
	BH-7512-91A			1/8" Shim
58	BH-7512-89A	991127		1/4" Shim
59	BH-7075-03	913828	10	Anchor Bolt
60	n/a	994216	1	2-Post Pressure Fitting Kit
61	F-A3505-6-6	992410	1	9/16" O-Ring to 3/8" JIC Elbow
62	BH-7239-105	992212	1	1/4" Return Line
63	F-JN-0750-16	913611	2	3/4-16 Hex Jam Nut
64	F-HN-0750-16	913602	2	3/4-16 Hex Nut
65	BH-7236-99	992402	2	Elbow
66	BH-7236-42	992156	1	Hydraulic Hose - 56" Standard
	BH-7237-59	992169	1	Hydraulic Hose - 45" High Rise
67	BH-7239-96	991082	2	24" Wire Tie
68	BH-7236-02	992317	2	Hyd. Cylinder - Standard
	BH-7236-02E	992327	2	Hyd. Cylinder - High Rise
	BH-7235-15	991281		Hyd Cylinder Seal Kit (Prince)
	BH-7235-15A	992317SKAA		Hyd Cylinder Seal Kit (Arlington)
69	F-NL-0500-13	912603	6	1/2-13 Hex Nylock Nut
70	BH-7239-121	0970804	4	Cylinder Bushing
71	F-6-4HB	992501		3/8" Bushing to 1/4" NPT Bushing
	call for price	992500		Line Tee Std. & High Rise Models
	call for price	952512		Line Tee Extended Height Models
	call for price	992496		Fitting Std. Height & High Rise
	call for price	992504		Fitting Extended Height Models
72	F-HC-0500-13-4500	912781	2	1/2-13 x 4-1/2 Hex Head Capscrew
73	BH-7239-122	1070803	1	Overhead - Std. Models
	BH-7239-123	1070805	1	Overhead - Narrow Models
74	F-HC-0250-20-0500	911421	2	1/4-20 HHCS x 1/2" Lg.
75	BH-7503-65	0970902	1	Overhead Switch Assembly
76	BH-7239-103	991481	1	Overhead Switch Bar, Single Phase
77	F-HC-0250-20-2000	911481	1	1/4-20 HHCS x 2" Lg.
78	BH-7239-99	991480	1	Switch Bar Spacer
79	F-LN-0250-20	991490	3	1/4-20 Flange Hex Lock Nut
80	BH-7237-57	992167	1	Hydraulic Hose 222" - Standard
	BH-7236-46	992158	1	Hydraulic Hose - 257" Extended 2'
81	F-NL-0625-11	913203	4	5/8-11 Nylon Insert Lock Nut
	BH-7236-95	1070911	2	Eq. Cable 33' 8" - Std. Models
	BH-7236-97	1072901	2	Eq. Cable 37' 6" - Std. Models, Ext. 2'
	BH-7236-96	1070914	2	Eq. Cable 32' 11" - Narrow Model
	BH-7236-98	1072903	2	Eq. Cable 36' 9" - Nar. Model, Ext. 2'
82	BH-7239-117	1070900	6	Cable Sheave
83	BH-7239-116	0970802	2	Sheave Pin
84	call for price	1070800	2	Cyl Mt./Upright Assy. - Std. Height
	call for price	1072800	2	Cyl Mt./Upright Assy. - Ext. Height
85	call for price	1070801	2	Cyl Mt./Upright Weld - Std. Height
	call for price	1072801	2	Cyl Mt./Upright Weld - Ext. Height
86	BH-7235-27	995120	16	Carriage Slider Block

**TERMS AND CONDITIONS OF THE
SALES ORDER
FOR SVI INTERNATIONAL, INC.**

1. **GENERAL.** The terms and conditions of sales order outlined herein shall apply to the sale by SVI INTERNATIONAL, INC. (hereinafter referred to as "Company") of the items described on the facing page (hereinafter referred to as "Merchandise") to Purchaser.
2. **DELIVERY.** Delivery shall be deemed to be complete when the Merchandise has been shipped F.O.B. Company's plants in DeKalb, Illinois, Duarte, California; and Baltimore, Maryland ("Company's plants"). Shipments are subject to delays from causes or contingencies beyond the reasonable control of the Company. When otherwise not specified, shipments will be made in standard containers via carrier which, in the judgment of the Company, will result in the most practical method. Title and right of possession will pass to the Purchaser upon receipt by the carrier at the shipping point. If a customer of the Company should specify a specific carrier's method of shipment (i.e. UPS Next Day Air) and that carrier does not perform to the customer's expectations, freight credit to a customer's account will not be issued unless the Company can first obtain a credit.
3. **RISK OF LOSS.** Identification of the Merchandise under Uniform Commercial Code (hereinafter referred to as "UCC") Section 2-501 shall take place at the moment of shipment F.O.B. Company's plants. Risk of loss shall pass to the Purchaser when the Merchandise is shipped from the Company's plants.
4. **TITLE.** Title to the merchandise shall transfer to the Purchaser when the Merchandise is shipped from the Company's plants.
5. **WARRANTIES.** The Company guarantees its products to be free from defects in workmanship and raw materials for a period of one year from date of purchase. THIS WARRANTY IS EXPRESSLY IN LIEU OF ANY AND ALL WARRANTIES EXPRESS OR IMPLIED. COMPANY DOES NOT WARRANT THE MERCHANDISE IS MERCHANTABLE OR FIT FOR ANY PARTICULAR PURPOSE. Company's liability for breach of the terms of this Agreement, including any warranty, is limited to either refund of the invoice price of the Merchandise or at Company's option, replacement of the Merchandise free of charge, including transportation charges but not including the cost of labor. Purchaser has not relied on any statement or upon the conduct of Company with respect to the prospective use of the merchandise. Company shall not be liable for and Purchaser waives any and all claims for any loss or damage, directly or indirectly, arising from the use of the Merchandise and for punitive, incidental or consequential damages, including, but not limited to, damages to property, for loss of use, loss of time, loss of profit or loss of income. The Company does not authorize the sale of our products under any other warranty, expressed or implied.
6. **SETOFF.** All claims for money due or to become due from the Company shall be subject to deduction by the Company for any setoff or counterclaim arising out of this or any other claims of the Company or its affiliated companies, whether such setoff or counterclaim arose before or after any assignment by Purchaser.
7. **INDEMNIFICATION.** Purchaser agrees to indemnify the Company and hold it harmless from and against all claims, liability, loss, damage or expense, including reasonable counsel fees, arising from or by reason of any modifications or alterations made by Purchaser. If a customer of the Company modifies or alters any part, in any manner whatsoever, or uses any part in departure from recommended performance specifications, said customer agrees to indemnify and hold the Company harmless from and against all liability and expenses based on damage to property or injury to or death of any person arising out of or attributable to such modified or altered part. Further, the Company will not accept any such modified or altered part for credit to a customer's account.
8. **FREIGHT POLICY.** Freight charges on individual orders less than \$3,000 in net value are prepaid and added to invoice or collect F.O.B. shipping point. Freight charges (standard ground service and continental US only) on individual orders more than \$3,000 net value are paid by the Company F.O.B. shipping point. Note: customers with C.O.D. terms are responsible for all carrier C.O.D. fees regardless of order net value.
9. **RETURN POLICY.** To return parts for credit or inspection Purchaser must first contact the Company to obtain a Return Goods Authorization number (RGA#). Once Purchaser has obtained an RGA# the parts can be returned freight prepaid only. The RGA# must be on the outside of the container in a highly visible location. All parts must be returned freight prepaid and the shipment must include a letter of explanation giving the specific reason for return including details as to the conditions under which the part or parts operated. Note: parts returned without an RGA#, freight collect or without written explanation may be refused. Parts which have been used in any way or manner, including any installation or incorporation into a lift or hoist, shall NOT be eligible for return whether or not an RGA has been assigned.
10. **RESTOCK CHARGE.** Returns are subject to up to twenty-five (25%) restocking charge. Refusals are subject to the same restocking charge plus the cost of outbound and return freight charges and/or fees incurred by the Company due to shipment refusal.
11. **PRICES AND PAYMENTS.** All prices are subject to change without notice. All prices are F.O.B. shipping point. The Company standard terms are net 30 days, C.O.D. company check, C.O.D. cash, VISA, MasterCard, Discover or American Express. However, if in the judgment of the Company, the financial condition of the Purchaser at any time does not justify shipment according to standard terms of payment, the Company may require full or partial payment in advance.
12. **INTERPRETATION.** This sales order is intended by the parties as a complete and exclusive statement of the terms of their agreement. It supersedes all prior agreements, written or oral. No course of prior dealings between the parties and no usage of the trade shall be relevant to supplement or explain any terms used in this sales order. Acceptance or acquiescence in a course of performance rendered under this purchase order shall not be relevant to determine the meaning of this sales order even though the accepting or acquiescing party has knowledge of the nature of the performance and opportunity for objection. Whenever a term defined by the UCC is used in this sales order the definition contained in the UCC shall control.
13. **MODIFICATION.** This sales order can be modified or rescinded only by a writing signed by both parties.
14. **WAIVER.** No claim or right arising out of a breach of this sales order can be discharged in whole or in part by a waiver or renunciation of the claim or right unless such waiver or renunciation is supported by consideration and is in writing signed by the aggrieved party.
15. **ASSIGNMENT.** No right or interest in this sales order shall be assigned by either party without the written consent of the other and no delegation of any obligation owed, or of the performance of any obligation by either the Company or Purchaser shall be made without the written consent of the other party. Any attempted assignment or delegation not made in conformity with this paragraph shall be wholly void and totally ineffective for all purposes.
16. **TIME TO PERFORM AND BRING ACTION.** Time is of the essence of this sales order. Any action for breach of this sales order shall be commenced within two (2) years after the cause of action has accrued. Any party who loses any litigation shall reimburse the other party for costs including reasonable attorneys fees. The exclusive jurisdiction for any legal action shall be the Circuit Court of DeKalb County, Illinois.
17. **APPLICABLE LAW.** This sales order shall be governed by the UCC of Illinois as effective and in force on the date of this sales order.

Offering the Best in Automotive Lift Repair Parts and More!

Auto Lift Cables • Auto Lift Parts • Brake Lathe Repair Parts

Compressed Air Repair Parts • Exhaust System Products • Fluid Delivery Repair Parts

Lubrication Equipment Repair Parts • Repair Parts for Gasboy Consumer Series

Service Station Pump and Tank Products • SVI Misc Auto Lift Products and Catalogs

Tire Changer Repair Parts • Vehicle Lifting Systems • Wheel Balancer Accessories

Serving the Industry Since 1977 • Same-Day Shipping



SVI International, Inc.

(800) 321-8173 • fax: (800) 899-1784

155 Harvestore Drive • DeKalb, IL 60115

www.sviinternational.com

BALTIMORE • CHICAGO • LOS ANGELES

While the utmost care has been used in compiling this reference material, we assume no responsibility for errors. Specifications are subject to change without notice. This edition supersedes all previous editions or issues. SVI reference material is subject to change without notice. All rights reserved.